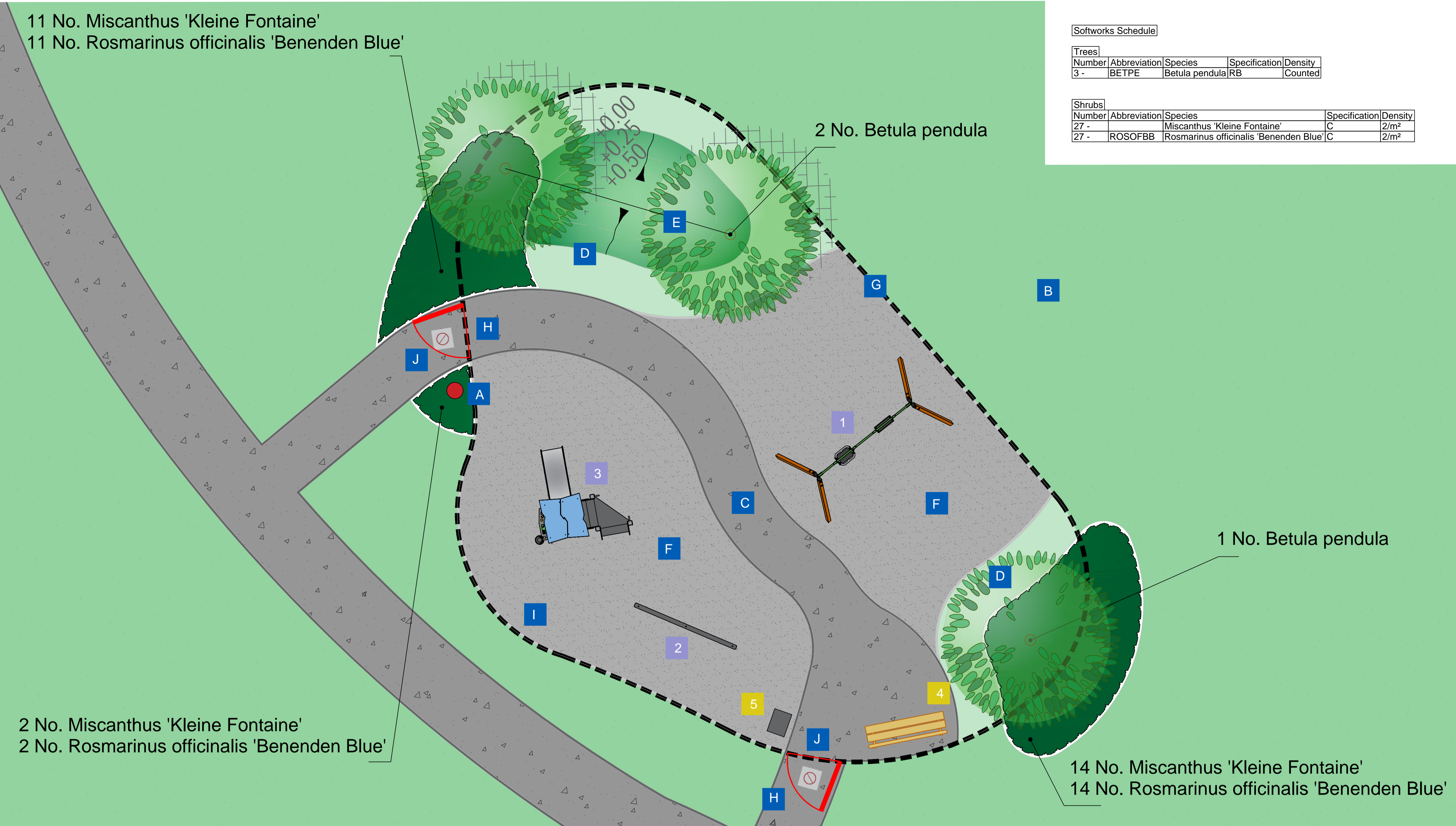


Softworks Schedule

Trees				
Number	Abbreviation	Species	Specification	Density
3 -	BETPE	Betula pendula	RB	Counted

Shrubs				
Number	Abbreviation	Species	Specification	Density
27 -		Miscanthus 'Kleine Fontaine'	C	2/m ²
27 -	ROSOFFB	Rosmarinus officinalis 'Benenden Blue'	C	2/m ²



- A** Post mounted signage to be secured at the entrance in to the play space. Exact wording and design to be confirmed
- B** Site leveling and groundworks by others
- C** Tarmac pathways by others
- D** Premium grade turf to area within fence line
- E** Mounding works up to 0.5m height created using spoil generated on site. Additional suitable fill and topsoil by others if required
- F** Black wetpour laid over MOT type 1 and defined with block edging provides a safer surfacing for the play equipment - depths of wetpour to relate to the appropriate free fall heights
- G** Play Spec 1m High galvanised and powdercoated Black Bowtop Fencing
- H** 1.2m wide Premier Safe sprung self closing gate, galvanised and powdercoated red
- I** 151 Sq.M. area within fence line
- J** 'No Dogs' paving slab, 450mm x 450mm

2 No. Miscanthus 'Kleine Fontaine'
2 No. Rosmarinus officinalis 'Benenden Blue'

2 No. Betula pendula

1 No. Betula pendula

14 No. Miscanthus 'Kleine Fontaine'
14 No. Rosmarinus officinalis 'Benenden Blue'

1 Vinci Play
Timber Swings, 1 x Cradle Seat, 1 x Flat
Code: PVR1233-B-WL



2 Vinci Play
Metal Balance Beam
Code: PVL9011-A-S



3 Vinci Play
Single Tower
Code: PVR1095-B-WL



4 Broxap
Medway Seat
Code: BX144026



5 Broxap
Derby E Slimline Little Bin
Code: BX45G 2596-E



Revision			
A	Design amendments	AW	06.10.20
B	Kit and surfacing amendments	AW	12.11.20

Images are an indicative representation, colours and specification subject to variation