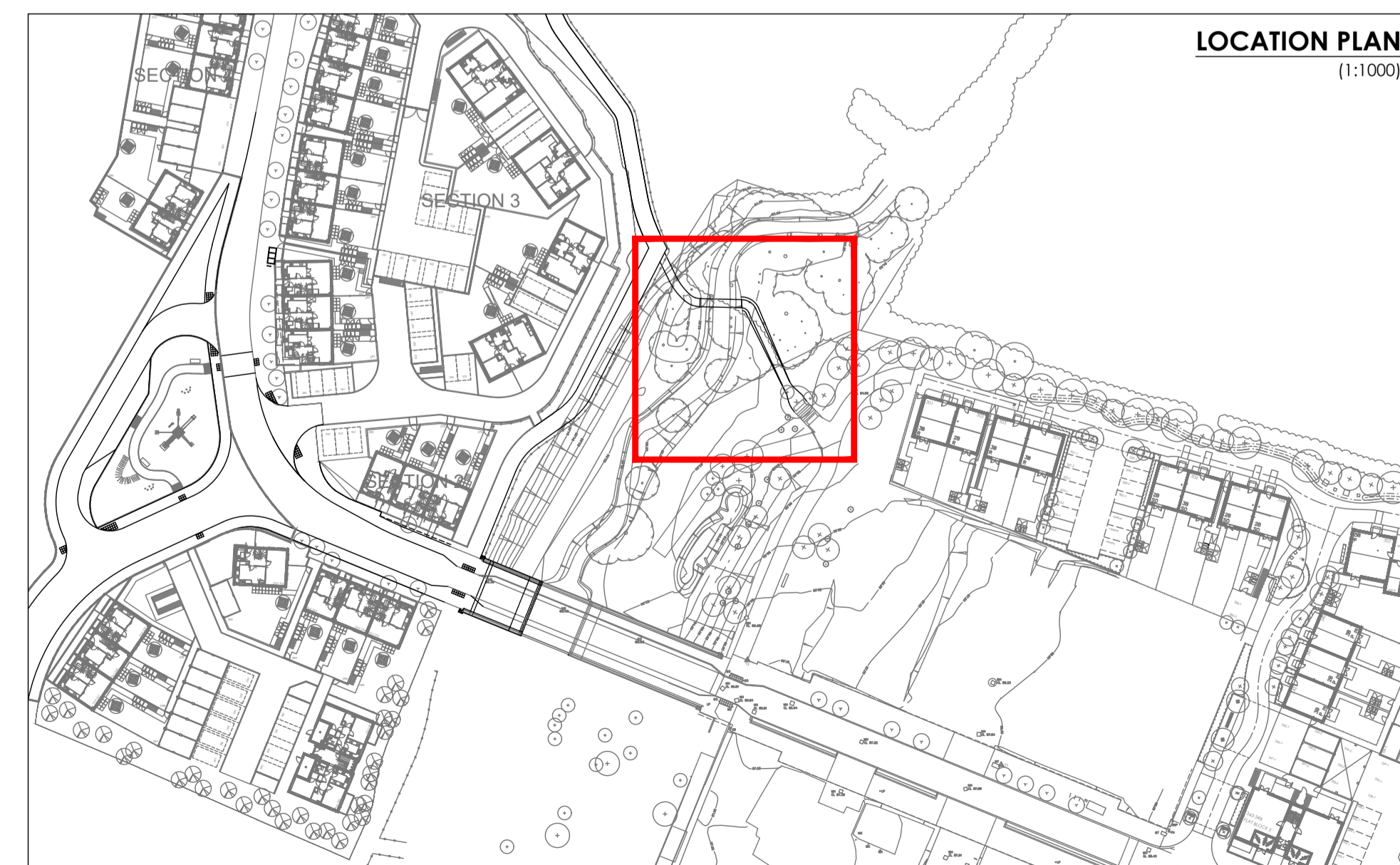


(A)	25mm of AC 6 dense surf 70/100 EN13108-1
(B)	50mm of AC 20 dense bin 70/100 EN13108-1
(C)	150mm lean mix concrete (CI 1030 SHW)
(D)	160mm Type 1 Sub base

TYPICAL FOOTWAY DETAIL



NOTES

- All dimensions and levels are in metres unless otherwise noted
- This drawing is to be read in conjunction with the relevant Architect's/Engineer's drawings, specifications and CDM documentation
- This drawing has been produced electronically and may have been photo reduced or enlarged when copied. Work to figured dimensions only (DO NOT SCALE). All dimensions to be checked on site. Any errors or omissions to be reported to the engineer immediately.
- This drawing contains coloured lines / information that may not be clear if reproduced in black and white.

	Proposed route of new path
	Existing river crossing
	Tree to be removed subject to confirmation
	Area of proposed grading (as required)
	Proposed level

PO1	NJ	TST	Initial issue	03/05/19
Rev	Drawn by	Chk'd by	Comments	Date

DRAWING TITLE
River Crossing Plan

PROJECT
North West Access
Bicester
Oxon

DESIGNED BY TST	DRAFTED BY NJ	APPROVED BY TST
--------------------	------------------	--------------------

DATE
May 2019

SCALE
1:100 @ A1

CLIENT		
--------	--	--

JOB NUMBER ICS-2024	DRAWING NUMBER 060	REVISION P01
------------------------	-----------------------	-----------------