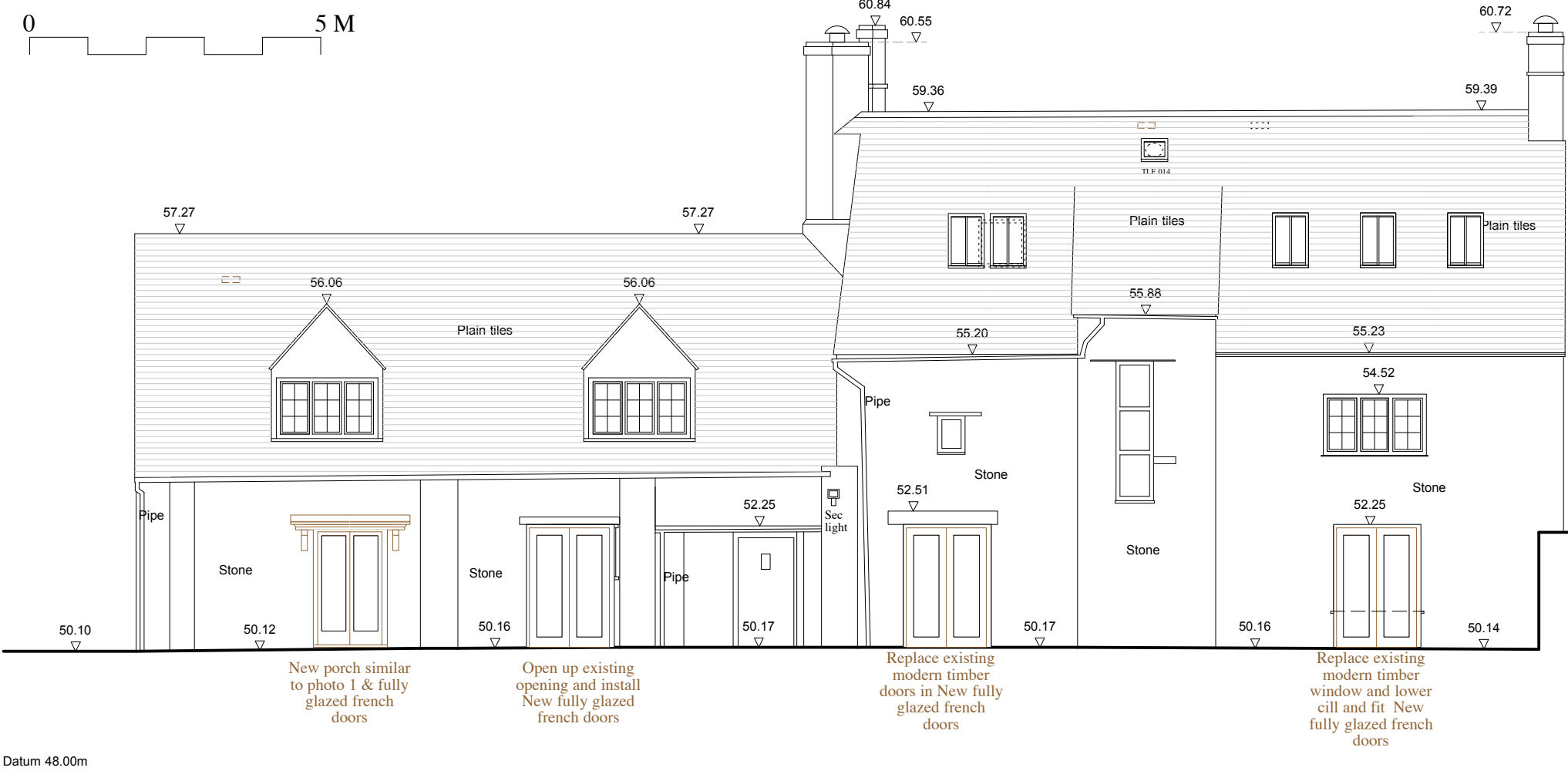


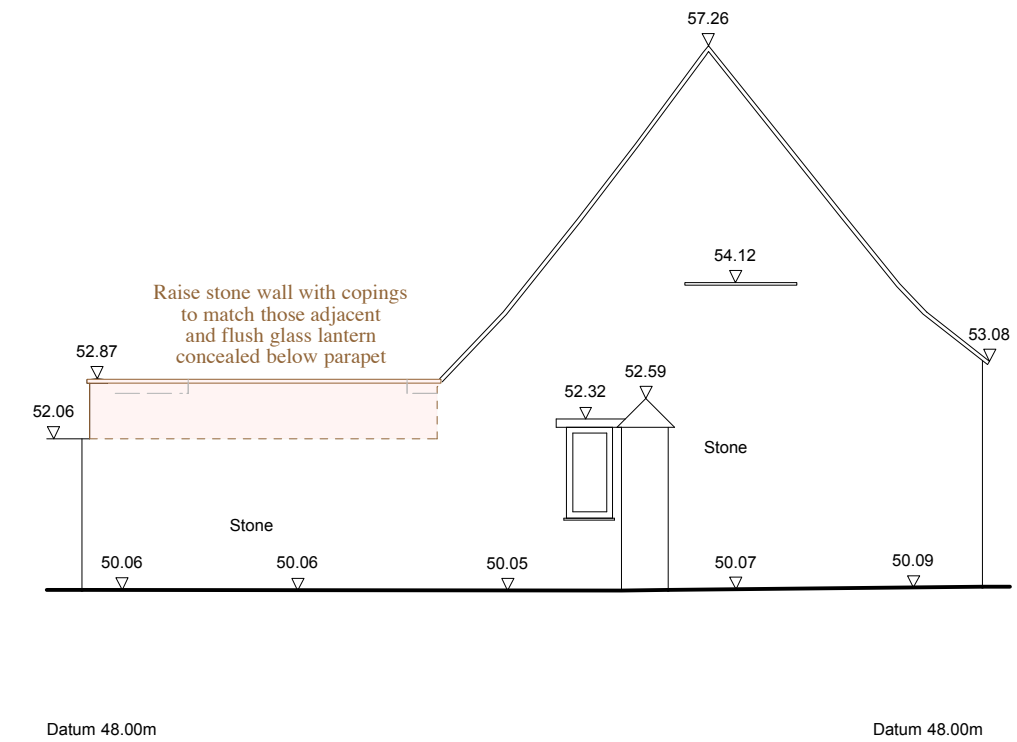


IMPORTANT NOTE
 This drawing has been prepared solely for the purpose of gaining planning approval. The architects do not hold themselves responsible for any materials use, or construction method or technique, which may be implied or inferred.



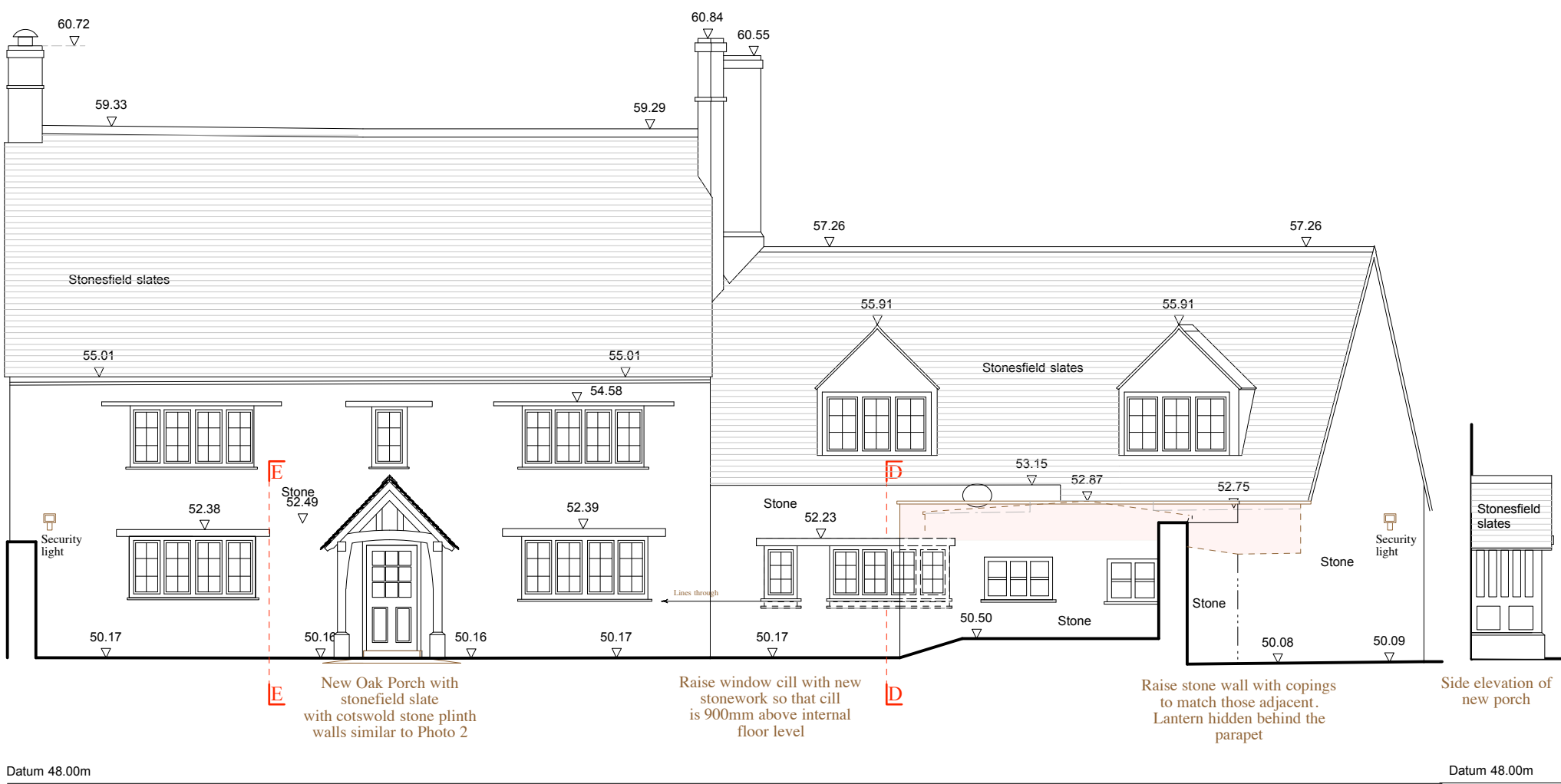
New porch similar to photo 1 & fully glazed french doors
 Open up existing opening and install New fully glazed french doors
 Replace existing modern timber doors in New fully glazed french doors
 Replace existing modern timber window and lower cill and fit New fully glazed french doors

Datum 48.00m
Elevation AA



Raise stone wall with copings to match those adjacent and flush glass lantern concealed below parapet

Datum 48.00m
Elevation BB



New Oak Porch with stonefield slate with cotswold stone plinth walls similar to Photo 2
 Raise window cill with new stonework so that cill is 900mm above internal floor level
 Raise stone wall with copings to match those adjacent. Lantern hidden behind the parapet

Datum 48.00m
Elevation CC



Photo 1 - Door canopy



Photo 2 - Typical Oak Porch

Rev E July 19 Screen shown to floor with flush lantern
 Rev D July 19 orangerie simplified and flushglaze lantern option shown
 Rev C July 19 orangerie simplified and lantern option shown
 Rev B May 19 Porch amended
 Rev A May 19 notes added re windows

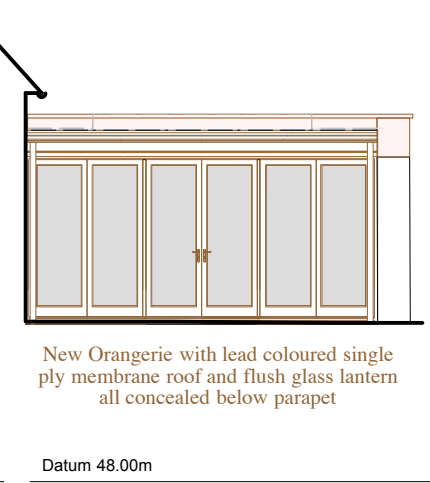
NICHOLS BROWN WEBBER
 ARCHITECTS AND LANDSCAPE PLANNERS

POND HOUSE, NORTHEND, HENLEY-ON-THAMES, OXON RG9 6LG
 TEL: TURVILLE HEATH (01491 638 536), FAX (01491 638 228)

PROJECT
Elm Tree House Phase 2

DRAWING TITLE
Proposed house elevations

PLOT DATE 16.7.19	CHECKED
SCALE 1/50 @ A1 1/100 @ A3	STATUS P
PROJECT NO 665/3	DRAWING NO P10
REVISION	E



New Orangerie with lead coloured single ply membrane roof and flush glass lantern all concealed below parapet

Datum 48.00m
Elevation DD