

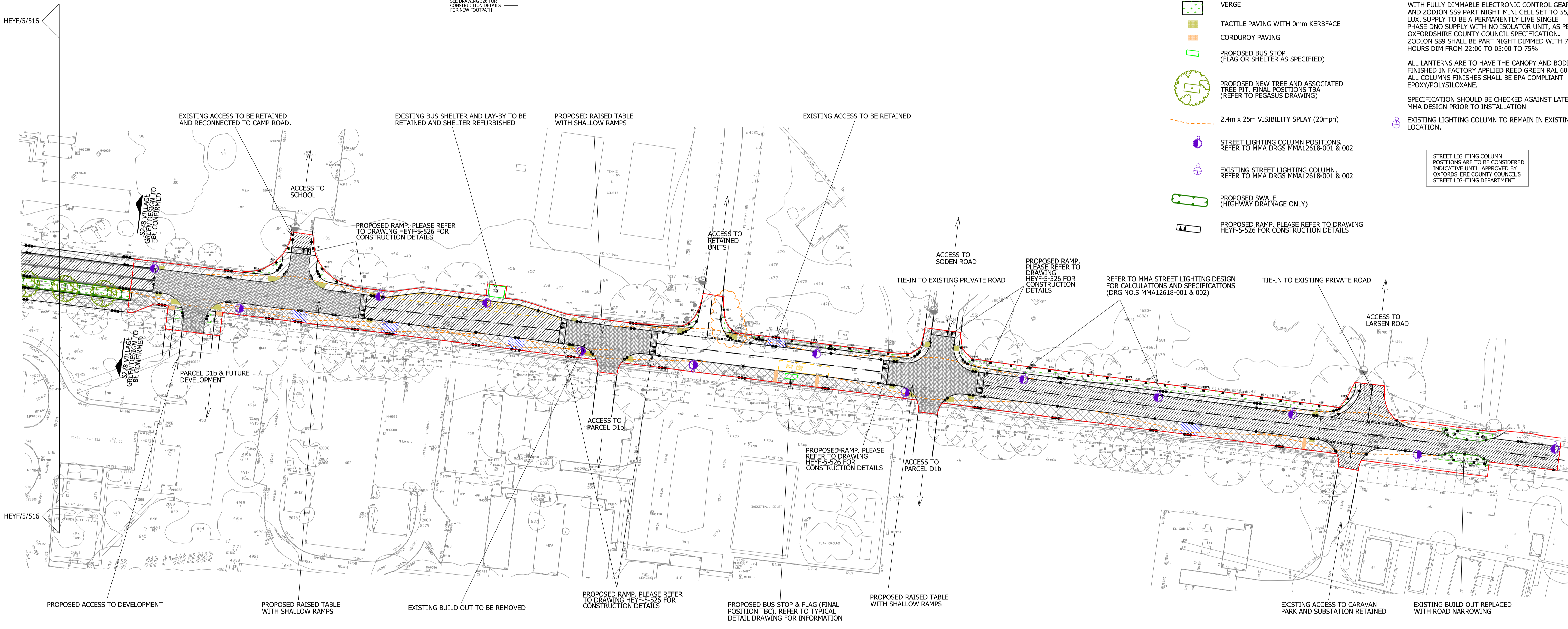
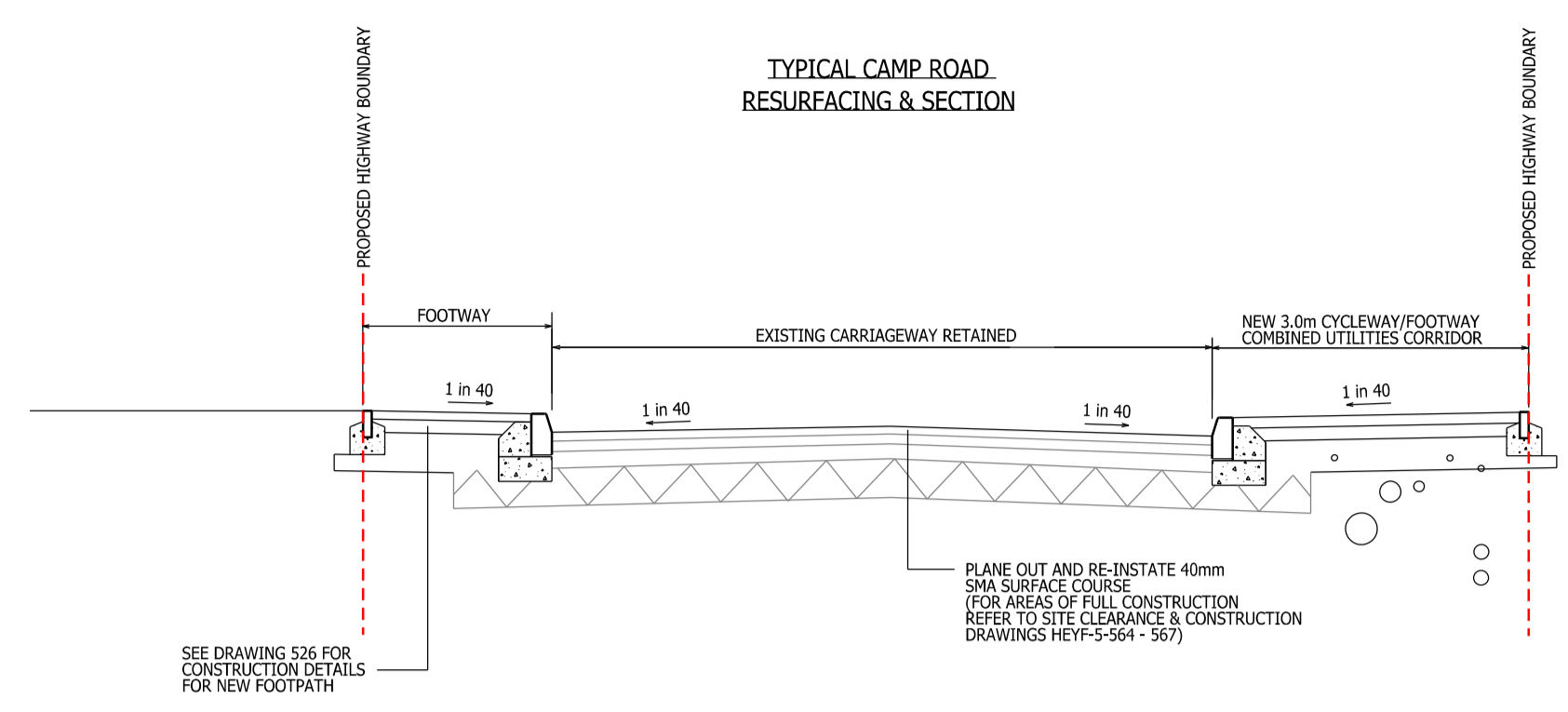
- S278 WORKS BOUNDARY
- HALF BATTERED KERB 125 x 255mm (HB2) 120mm UPSTAND
- BULLNOSE KERB 125 x 150mm (BN) 25mm UPSTAND
- EDGING KERB 150 x 50mm (EF) 0mm UPSTAND
- BULLNOSE KERB ON END (BN) 0mm UPSTAND
- CHANNEL KERB
- BLOCK PAVE RAMP & MARKINGS
- BITUMINOUS CARRIAGEWAY
- BLOCK PAVE CARRIAGEWAY
- BITUMINOUS FOOTWAY
- BITUMINOUS SHARED FOOTWAY / CYCLEWAY (UNSEGREGATED)
- VEHICULAR CROSS OVER
- VERGE
- TACTILE PAVING WITH 0mm KERBFACE
- CORDUROY PAVING
- PROPOSED BUS STOP (FLAG OR SHELTER AS SPECIFIED)
- PROPOSED NEW TREE AND ASSOCIATED TREE PIT. FINAL POSITIONS TBA (REFER TO PEGASUS DRAWING)
- 2.4m x 25m VISIBILITY SPLAY (20mph)
- STREET LIGHTING COLUMN POSITIONS. REFER TO MMA DRGS MMA12618-001 & 002
- EXISTING STREET LIGHTING COLUMN. REFER TO MMA DRGS MMA12618-001 & 002
- PROPOSED SWALE (HIGHWAY DRAINAGE ONLY)
- PROPOSED RAMP. PLEASE REFER TO DRAWING HEYF-5-526 FOR CONSTRUCTION DETAILS

1. CONTRACTORS MUST CHECK ALL DIMENSIONS ON SITE. ONLY FIGURED DIMENSIONS ARE TO BE WORKED FROM. DISCREPANCIES MUST BE REPORTED TO THE ARCHITECT OR ENGINEER BEFORE PROCEEDING. © THIS DRAWING IS COPYRIGHT .
2. REPRODUCED FROM OS SITEMAP © BY PERMISSION OF ORDNANCE SURVEY® ON BEHALF OF THE CONTROLLER OF HER MAJESTY'S STATIONERY OFFICE. © CROWN COPYRIGHT 2008. ALL RIGHTS RESERVED. LICENCE NUMBER 100007126.
3. ALL EXISTING BUILDINGS AND HARD/SOFT LANDSCAPED AREAS WITHIN LIMITS OF S278 WORKS TO BE GRUBBED UP.
4. ALL VISIBILITY SPLAYS IN ACCORDANCE WITH MANUAL FOR STREETS. ACTUAL TRAFFIC SPEEDS ASSUMED TO BE 20MPH REDUCING TO 10MPH AT FEATURES.

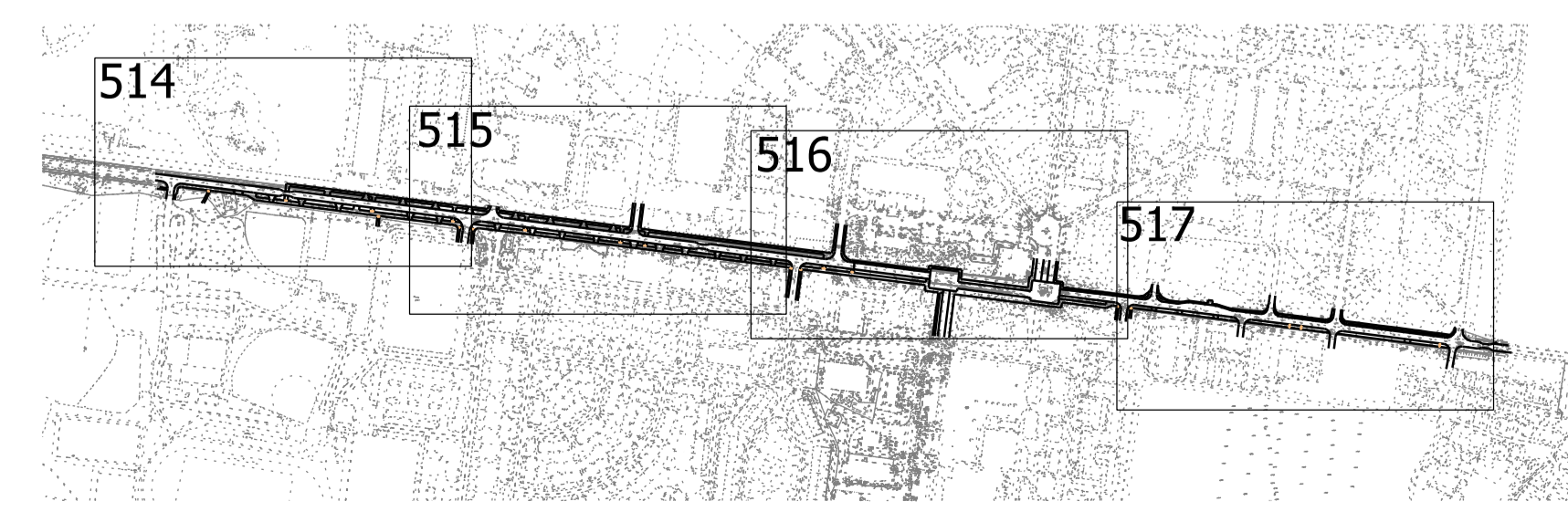
STREET LIGHTING KEY

- PROPOSED 6m CONICAL "AVON" STAINTON STEEL LIGHTING COLUMN AS PER OCC STANDARD LIGHTING COLUMN SPECIFICATION (SPECIFICATION SUPPLIED WITH DESIGN PACK) WITH A WRTL LUMA 2-60 GREEN LANTERN, MOUNTING HEIGHT 8M. LANTERN COMPLETE WITH FULLY DIMMABLE ELECTRONIC CONTROL GEAR AND ZODION SS9 PART NIGHT MINI CELL SET TO 55/28 LUX. SUPPLY TO BE A PERMANENTLY LIVE SINGLE PHASE DNO SUPPLY WITH NO ISOLATOR UNIT, AS PER OXFORDSHIRE COUNTY COUNCIL SPECIFICATION. ZODION SS9 SHALL BE PART NIGHT DIMMED WITH 7 HOURS DIM FROM 22:00 TO 05:00 TO 75%.
- ALL LANTERNS ARE TO HAVE THE CANOPY AND BODIES FINISHED IN FACTORY APPLIED REED GREEN RAL 6013. ALL COLUMNS FINISHES SHALL BE EPA COMPLIANT EPOXY/POLYSILOXANE.
- SPECIFICATION SHOULD BE CHECKED AGAINST LATEST MMA DESIGN PRIOR TO INSTALLATION
- EXISTING LIGHTING COLUMN TO REMAIN IN EXISTING LOCATION.

STREET LIGHTING COLUMN POSITIONS ARE TO BE CONSIDERED INDICATIVE UNTIL APPROVED BY OXFORDSHIRE COUNTY COUNCIL'S STREET LIGHTING DEPARTMENT.



Key Plan



Revision	Description	Drawn	Checked	Date
Q	CONSTRUCTION ISSUE	CG	AT	13-05-2015
P	STREET LIGHTING REVISED TO SUIT MMA DRAWINGS 12618-001-R5 AND 12618-002-R5	AT	JF	23-04-2015
N	BOUNDARY UPDATED TO SUIT CLIENT COMMENTS AROUND ACCESS EAST OF TENNIS COURTS	AT	JF	30-01-2015
M	STREET LIGHTING NOTE ADDED	CG	AT	27-01-2015
L	DRAWING UPDATED TO SUIT OCC S278 COMMENTS	CG	AT	26-11-2014
K	DRAWING UPDATED TO SUIT OCC COMMENTS DATED 10.10.14	CG	AT	21-10-2014
J	STREET LIGHTING UPDED	SD	JGF	06-05-2014
H	ACCESS ROAD RAMPS INCLUDED WITHIN S278, NOTE AMENDMENTS & MINOR ADJUSTMENTS	SD	JGF	10-03-2014
G	UPDATED TO SUIT LATEST CAMP ROAD PROPOSALS	SD	JGF	25-02-2014
F	LENGTH OF SWALE REMOVED TO SOUTH OF CAMP ROAD	AT	JGF	17-12-2013
E	UPDATED TO SUIT LATEST CAMP ROAD LAYOUT	SD	JGF	03-10-2013
D	LAYOUT REVISED TO SUIT ADJACENT PARCEL PROPOSALS	SD	JGF	28-08-2013
C	ADDITIONAL NOTES & UPDATED TO SUIT LATEST LAYOUT	SD	JGF	18-07-2013
B	VERGES WIDENED, SWALES AND INDICATIVE TREE POSITIONS ADDED. TYPICAL	SD	JGF	20-06-2013
A	SECTION ADDED TO DRAWINGS REVISED FOR S278 SUBMISSION	SD	JGF	05-06-2013

Preliminary
  Information
  Tender
  Construction
  As Built

**Woods Hardwick**  
Architects, Engineers and Development Consultants

Title: UPPER HEYFORD  
 Details: CAMP ROAD S278 SURFACE FINISHES (4 OF 4)  
 Scale: 1:500 @ A1 Date: MAY 2013 Drawn: JGF Chk: IDB



Please consider the environment before printing this drawing