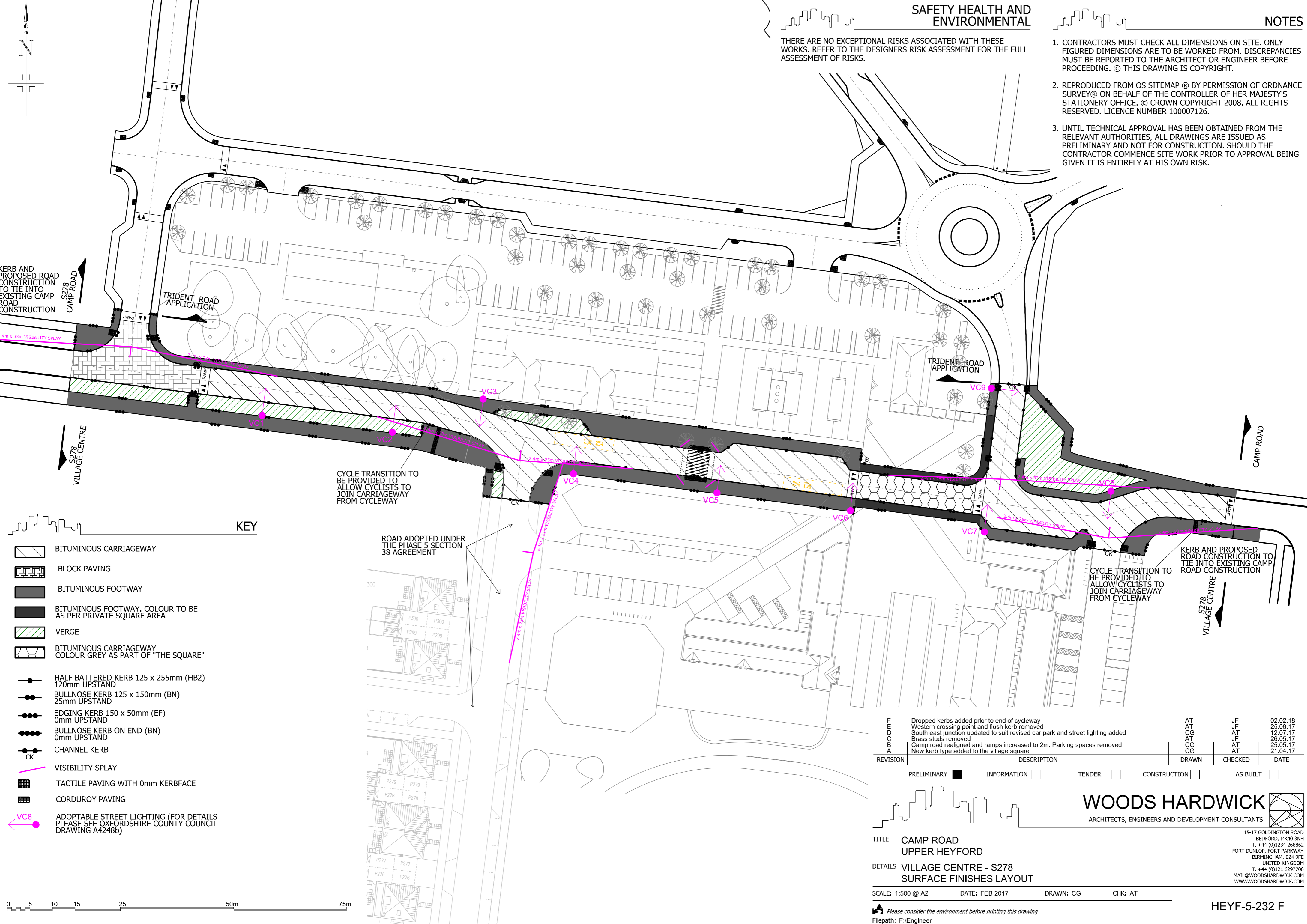


THERE ARE NO EXCEPTIONAL RISKS ASSOCIATED WITH THESE WORKS. REFER TO THE DESIGNERS RISK ASSESSMENT FOR THE FULL ASSESSMENT OF RISKS.

1. CONTRACTORS MUST CHECK ALL DIMENSIONS ON SITE. ONLY FIGURED DIMENSIONS ARE TO BE WORKED FROM. DISCREPANCIES MUST BE REPORTED TO THE ARCHITECT OR ENGINEER BEFORE PROCEEDING. © THIS DRAWING IS COPYRIGHT.
2. REPRODUCED FROM OS SITEMAP © BY PERMISSION OF ORDNANCE SURVEY® ON BEHALF OF THE CONTROLLER OF HER MAJESTY'S STATIONERY OFFICE. © CROWN COPYRIGHT 2008. ALL RIGHTS RESERVED. LICENCE NUMBER 100007126.
3. UNTIL TECHNICAL APPROVAL HAS BEEN OBTAINED FROM THE RELEVANT AUTHORITIES, ALL DRAWINGS ARE ISSUED AS PRELIMINARY AND NOT FOR CONSTRUCTION. SHOULD THE CONTRACTOR COMMENCE SITE WORK PRIOR TO APPROVAL BEING GIVEN IT IS ENTIRELY AT HIS OWN RISK.



KEY

- BITUMINOUS CARRIAGEWAY
- BLOCK PAVING
- BITUMINOUS FOOTWAY
- BITUMINOUS FOOTWAY, COLOUR TO BE AS PER PRIVATE SQUARE AREA
- VERGE
- BITUMINOUS CARRIAGEWAY COLOUR GREY AS PART OF "THE SQUARE"
- HALF BATTERED KERB 125 x 255mm (HB2) 120mm UPSTAND
- BULLNOSE KERB 125 x 150mm (BN) 25mm UPSTAND
- EDGING KERB 150 x 50mm (EF) 0mm UPSTAND
- BULLNOSE KERB ON END (BN) 0mm UPSTAND
- CHANNEL KERB
- VISIBILITY SPLAY
- TACTILE PAVING WITH 0mm KERBFACE
- CORDUROY PAVING
- ADOPTABLE STREET LIGHTING (FOR DETAILS PLEASE SEE OXFORDSHIRE COUNTY COUNCIL DRAWING A4248b)

CYCLE TRANSITION TO BE PROVIDED TO ALLOW CYCLISTS TO JOIN CARRIAGEWAY FROM CYCLEWAY

ROAD ADOPTED UNDER THE PHASE 5 SECTION 38 AGREEMENT

CYCLE TRANSITION TO BE PROVIDED TO ALLOW CYCLISTS TO JOIN CARRIAGEWAY FROM CYCLEWAY

REVISION	DESCRIPTION	DRAWN	CHECKED	DATE
F	Dropped kerbs added prior to end of cycleway	AT	JF	02.02.18
E	Western crossing point and flush kerb removed	AT	JF	25.08.17
D	South east junction updated to suit revised car park and street lighting added	CG	AT	12.07.17
C	Brass studs removed	AT	JF	26.05.17
B	Camp road realigned and ramps increased to 2m. Parking spaces removed	CG	AT	25.05.17
A	New kerb type added to the village square	CG	AT	21.04.17

PRELIMINARY INFORMATION TENDER CONSTRUCTION AS BUILT

WOODS HARDWICK
ARCHITECTS, ENGINEERS AND DEVELOPMENT CONSULTANTS

TITLE **CAMP ROAD UPPER HEYFORD**
 DETAILS **VILLAGE CENTRE - S278 SURFACE FINISHES LAYOUT**
 SCALE: 1:500 @ A2 DATE: FEB 2017 DRAWN: CG CHK: AT

15-17 GOLDINGTON ROAD
BEDFORD, MK40 3NH
T. +44 (0)1234 268862
FORT DUNLOP, FORT PARKWAY
BIRMINGHAM, B24 9FE
UNITED KINGDOM
T. +44 (0)121 6297700
MAIL@WOODSHARDWICK.COM
WWW.WOODSHARDWICK.COM

HEYF-5-232 F

Please consider the environment before printing this drawing
Filepath: F:\Engineer