

FOR CONTINUATION REFER LLA DWG 1908 15

PHASE I

PHASE I

LEGEND

- Existing trees / vegetation - refer to arboricultural report for detail
- Proposed tree
- Proposed hedge
- Proposed specimen shrub
- Proposed climber
- Proposed planting
- Proposed grass
- Proposed EM2 Standard General Purpose Meadow Mixture by Emorsgate
- Proposed root barrier - GreenBlue Urban ReRoot 1000 or similar approved
- Page division lines
- Site boundary
- Hedge to be removed for footpath links

Total of 8 bird boxes to be positioned on retained vegetation along boundaries of the site - refer to ecologists recommendations for details.

3 bat boxes to be positioned on mature trees within retained woodland to east - refer to ecologists recommendations for details.

Bat and bird boxes to be positioned under direction of the ecological clerk of works who will oversee correct installation. In addition, specification and design of each box will be approved via the ecological clerk of works.

GENERAL NOTES

This drawing is to be used for planting information only, and is subject to alteration through changes to the site layout or until approved by the area designer.

Any species substitution by the contractor must be verified with the Landscape Architect through the Job Architect.

This layout must be checked in accordance with NHBC Standards 2013 (Chapter 4.2 - Building Near Trees & Chapter 9.2 - Drives, Paths and Landscaping) by the Regional Engineer prior to implementation.

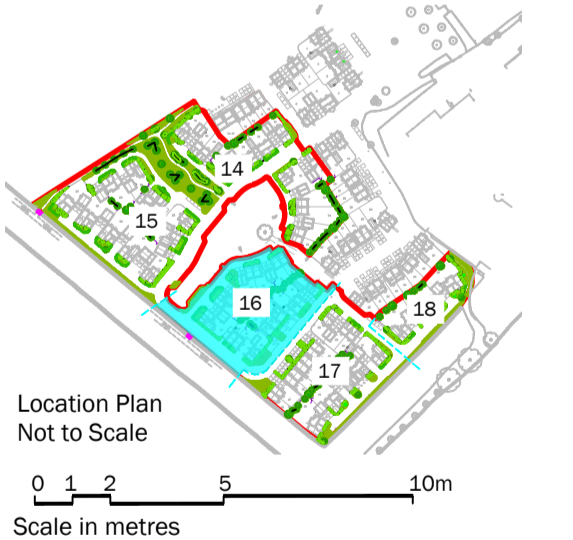
Excavations: Contractors must ensure that they have full information relating to service and drainage positions before undertaking any excavations.

Root barriers to be used in association with tree planting adjacent to kerbs / services / footpaths etc. (GreenBlue Urban ReRoot products or similar application, in accordance with manufacturer's instructions).

For retaining wall details refer to Engineers drawings.

For Planting Schedule refer to LLA drawing 1908 18

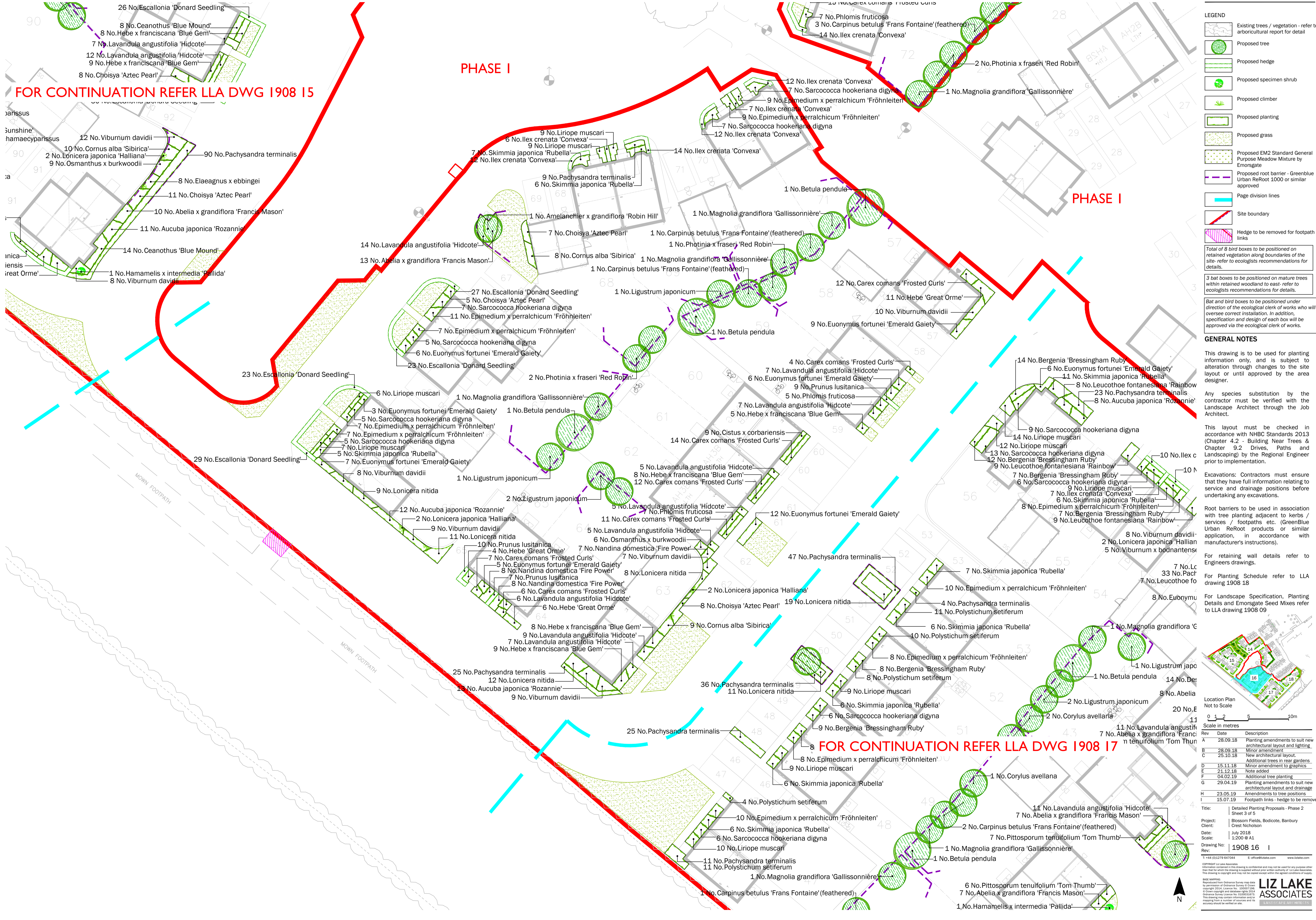
For Landscape Specification, Planting Details and Emorsgate Seed Mixes refer to LLA drawing 1908 09



Rev	Date	Description
A	28.09.18	Planting amendments to suit new architectural layout and lighting.
B	28.09.18	Minor amendment.
C	25.10.18	New architectural layout.
D	15.11.18	Minor amendment to graphics.
E	21.12.18	Note added.
F	04.02.19	Additional tree planting.
G	29.04.19	Planting amendments to suit new architectural layout and drainage.
H	23.05.19	Amendments to tree positions.
I	15.07.19	Footpath links - hedge to be removed.

Title: Detailed Planting Proposals - Phase 2
Sheet 3 of 5

Project: Blossom Fields, Bodicote, Banbury
Client: Crest Nicholson
Date: July 2018
Scale: 1:200 @ A1
Drawing No: 1908 16 I
Rev:



FOR CONTINUATION REFER LLA DWG 1908 17