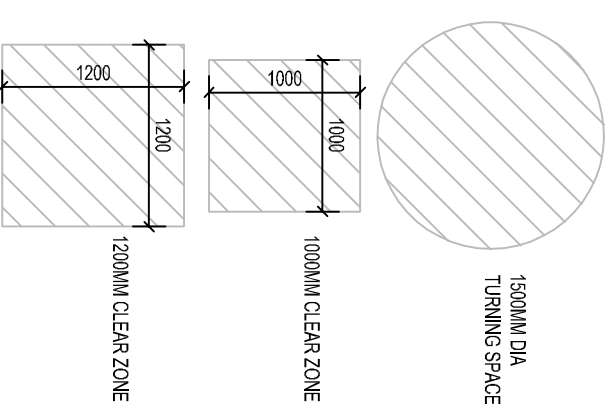


Switches and socket outlets for lighting and other equipment to be at appropriate heights between 450mm and 1200mm from finished floor level in accordance with Part M1 Accessible switches and socket outlets in the dwelling.

THIS WORKING DRAWING IS TO BE READ IN CONJUNCTION WITH THE CREST STANDARD CONSTRUCTION NOTES AND THE STANDARD WORKMANSHIP AND MATERIALS SPECIFICATION

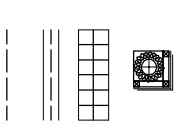


Services Legend:

Electrical: One gang, one way switch One gang, two way switch One gang, three way switch Pull switch One gang, one way switch for loft space with neon light Low energy bulb only pendant light fitting assembly low energy Batten light fitting assembly Fluorescent with diffuser Low energy downlighter Low energy internal light fitting Low energy external light fitting Low energy bulkhead external light fitting Batten light fitting assembly in loft Wall Unit Lighting Blanking plate - for light fittings Blanking plate - for small power Single unswitched socket outlet Single switch socket outlet Double switch socket outlet Shaver socket High level isolating switch fused spur High level isolating switch spur with neon warning light Low level socket with fused spur above worktop Space Heating: Towel rail Radiator Plumbing: External tap Gas point "I" Box location		Security: Bell push Battery operated chimes Smoke detector (Mains operated and interconnected) PIR Carbon Monoxide Detector Heat Detector Thermostat Communication: Incomming BT point TV point Telephone & Data RJ45 point Sky Plus "ONT" box (fibre optic sites only) Media-Plate outlet (Refer to plans) Data points - 4 module grid plate Double backbox with blanking plate Ventilation: Extract fan - ceiling mounted Humidistat MEV boost switch with neon indicator Multi Vent Unit Water & Heating: Boiler Unit Hot water Cylinder Kick space heater Services: Split load consumer unit Electricity meter Gas meter	
--	--	--	--

Electric cables must not be covered by the floor insulation unless cable rated accordingly. Note: Downlighters shown should only be fitted in lieu of batten light fittings where specified in Premier GCS only

SERVICES BOXING LEGEND



SVP and boxing shown as thus to be full height unless AAV. To consist of 38 x 38 mm SW timber batten framed construction and finished with 2No layers 12.5mm plasterboard. SVP to be wrapped with 50mm mineral wool insulation wall.
Services boxing shown as thus to be half height or to suit window sill. To consist of 38 x 38 mm SW timber batten framed construction and finished with 2No layers 12.5mm plasterboard. Boxing to be finished in accordance with GCS. Services boxing shown as thus to be low level. To consist of max 100 x 150mm Peridock Profile boxing at ceiling level in positions indicated on plans.
Indicates service run.

CONSTRUCTION

C2	CLOAK ROOM LAYOUT UPDATED TO CN COMMENTS	14.01.20	LMB
C1	CONSTRUCTION ISSUE	30.09.19	LMB
T2	TENDER ISSUE	23.07.19	DL
Rev.	DESCRIPTION	05.05.19	Intel.

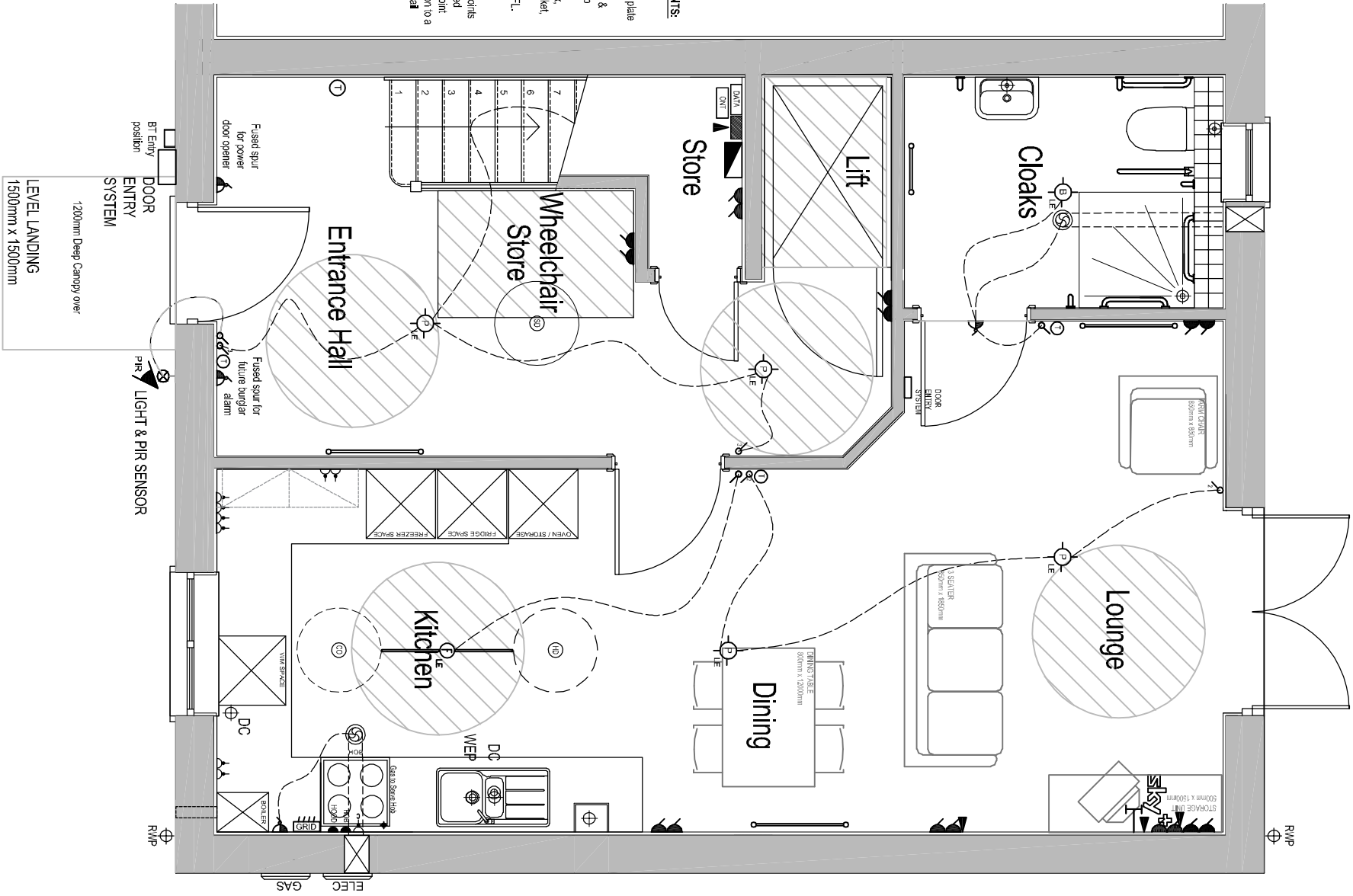
Drawing Status: **CONSTRUCTION**

Crest Nicholson Ltd.
Pacific House
Relay Point
Wilnecole
Tarnworth
B77 5PA
www.crestnicholson.com

Site:	BODICOTE
House Type:	AH2B WC
Unit Size:	114 m ² 1227 ft ²
Dwg Title:	GROUND FLOOR SERVICES
Scale:	1:50
Page Size:	A3
Date:	MAR 19
Drawn:	-
Checked:	-

AS: 60 BRICK

GROUND FLOOR SERVICES PLAN



For voice and data distribution refer to detail CNSDME001

FIBRE OPTIC DEVELOPMENTS:

Provide minimum 2m aisle on incoming supply housed with double backbox with blanking plate for future connection to BT customer splicing point (CSP) & "ONT" box with battery back-up

All fittings: BT CSP "ONT" box, back-up, backbox, double socket, Data points & BT point to be installed @ 1100mm above FFL.

GENERAL NOTE:

For all developments, all BT points (voice and data) are to be wired back to the Master BT point under stairs to allow connection to a network; refer to Standard Detail CNSDME001