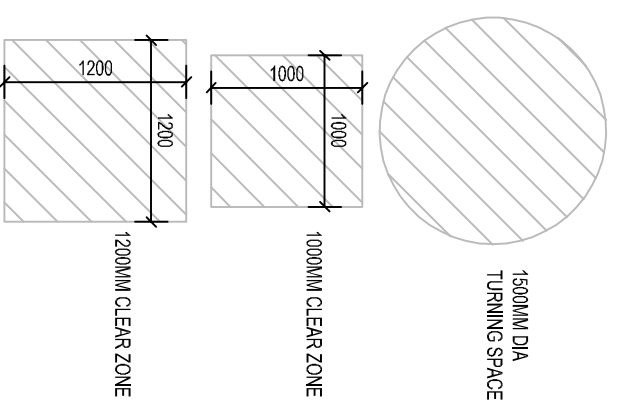


Switches and socket outlets for lighting and other equipment to be at appropriate heights between 450mm and 1200mm from finished floor level in accordance with Part M1 Accessible switches and socket outlets in the dwelling.

**THIS WORKING DRAWING IS TO BE READ IN CONJUNCTION WITH THE CREST STANDARD CONSTRUCTION NOTES AND THE STANDARD WORKMANSHIP AND MATERIALS SPECIFICATION**

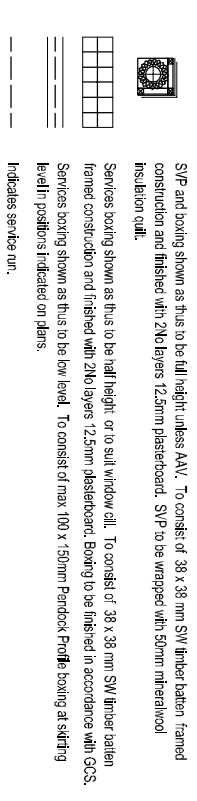


**Services Legend:**

<p><b>Electrical:</b></p> <ul style="list-style-type: none"> <li>One gang, one way switch</li> <li>One gang, two way switch</li> <li>One gang, three way switch</li> <li>Pull switch</li> <li>One gang, one way switch for loft space with neon light</li> <li>Low energy bulb only pendant light fitting assembly</li> <li>low energy Batten light fitting assembly</li> <li>Flourescent with diffuser</li> <li>Low energy internal light fitting</li> <li>Low energy external light fitting</li> <li>Low energy bulkhead external light fitting</li> <li>Batten light fitting assembly in loft</li> <li>Wall Unit Lighting</li> <li>Blanking plate - for light fittings</li> <li>Single unswitched socket outlet</li> <li>Single switch socket outlet</li> <li>Double switch socket outlet</li> <li>Shaver socket</li> <li>High level isolating switch fused spur</li> <li>High level isolating switch spur with neon warning light</li> <li>Low level socket with fused spur above worktop</li> <li>Space Heating:</li> <li>Towel rail</li> <li>Radiator</li> <li>Plumbing:</li> <li>External tap</li> <li>Gas point</li> <li>'I' Box location</li> </ul>	<p><b>Security:</b></p> <ul style="list-style-type: none"> <li>Bell push</li> <li>Battery operated chimes</li> <li>Smoke detector (Mains operated and interconnected)</li> <li>PIR</li> <li>Carbon Monoxide Detector</li> <li>Heat Detector</li> <li>Thermostat</li> <li><b>Communication:</b></li> <li>Incoming BT point</li> <li>TV point</li> <li>Telephone &amp; Data RJ45 point</li> <li>Sky Plus</li> <li>'ONT' box (fibre optic sites only)</li> <li>Media-Plate outlet (Refer to plans)</li> <li>Data points - 4 module grid plate</li> <li>Double backbox with blanking plate</li> <li><b>Ventilation:</b></li> <li>Extract fan - ceiling mounted</li> <li>Humidistat</li> <li>MEV boost switch with neon indicator</li> <li>Multi Vent Unit</li> <li><b>Water &amp; Heating:</b></li> <li>Boiler Unit</li> <li>Hot water Cylinder</li> <li>Kick space heater</li> <li><b>Services:</b></li> <li>Split load consumer unit</li> <li>Electricity meter</li> <li>Gas meter</li> </ul>
--	---

**Electric cables must not be covered by the floor insulation unless cable rated accordingly. Note: Downlighters shown should only be fitted in lieu of batten light fittings where specified in Premier GCS only**

**SERVICES BOXING LEGEND**



**CONSTRUCTION**

C2	BATHROOM LAYOUT UPDATED TO CN COMMENTS	14.01.19	LMB
C1	CONSTRUCTION ISSUE	30.09.19	LMB
T	Rev. Description	05.05.19	Intel.

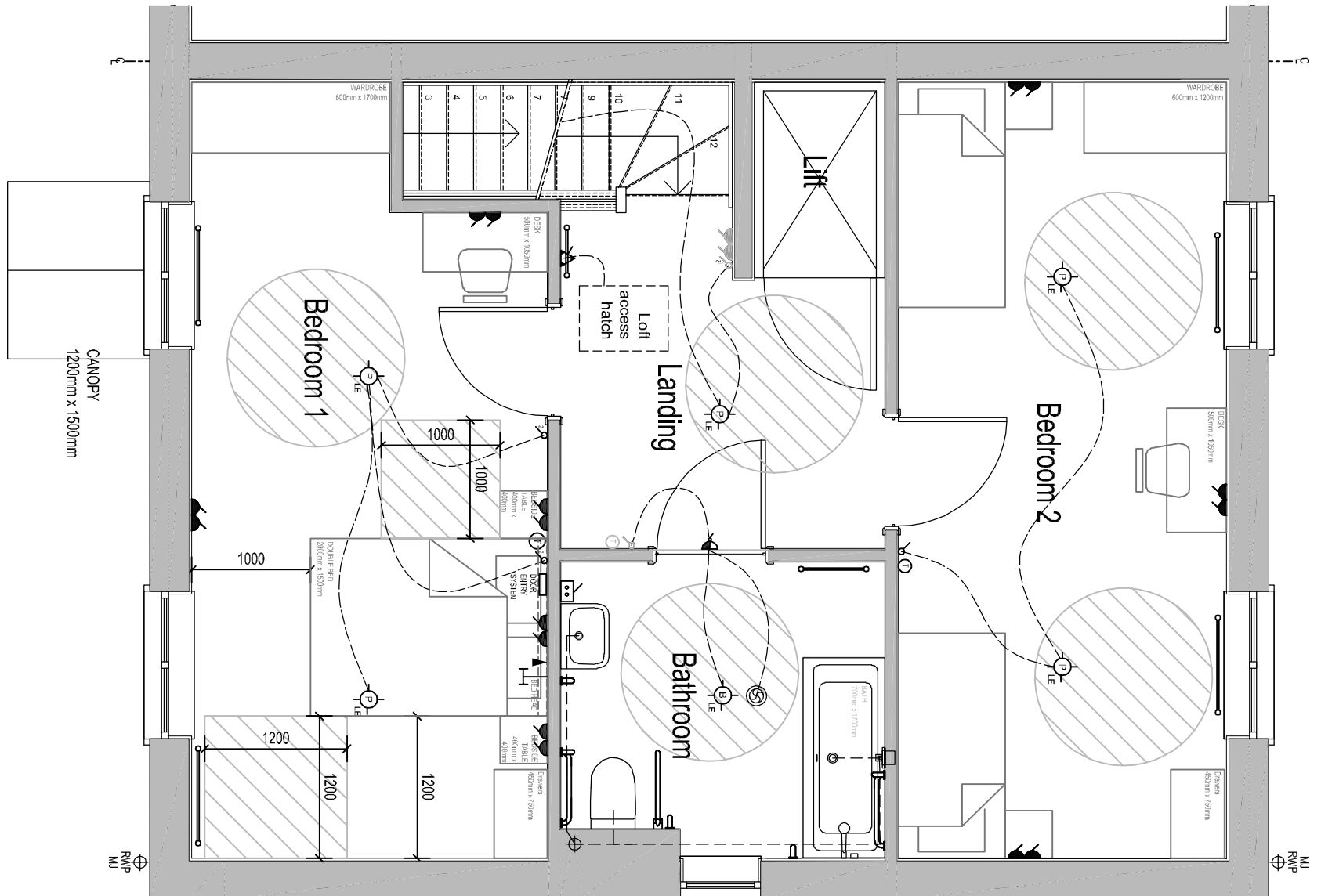
Drawing Status:

**CREST**

Crest Nicholson Ltd.  
Pacific House  
Relay Point  
Wiltecote  
Tarnworth  
B77 5PA  
www.crestnicholson.com

Site:	BODICOTE	Unit Size:	114 m <sup>2</sup> 1227 ft <sup>2</sup>
House Type:	AH2B WC		
Dwg Title:	FIRST FLOOR SERVICES	Page Size:	A3
Scale:	1:50	Drawn:	OR
Drawing No:	14752-HMA-AH2BWC-FFSERV-A-1052	Checked:	DL
		Revision:	C2

**FIRST FLOOR SERVICES PLAN**



AS: 60

BRICK