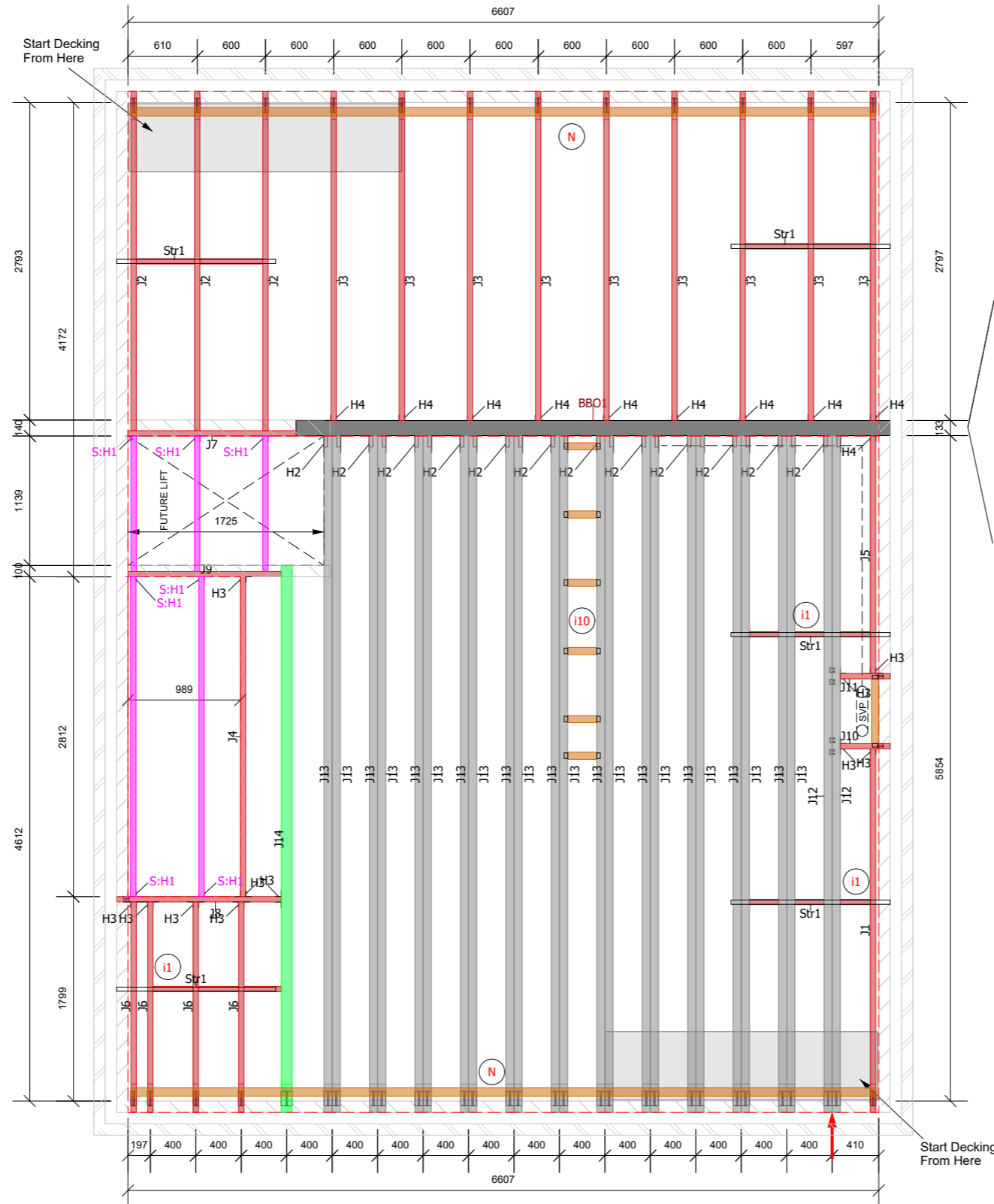


TO DOWNLOAD TO APPLE DEVICE TO DOWNLOAD TO ANDROID DEVICE



- 1 Click on App Store icon.
- 2 Search for Staircraft INSTALL and install the free App.
- 3 Once installed tap the Staircraft icon to begin.
- 1 Open the Google Play store.
- 2 Search for Staircraft INSTALL and install the free App.
- 3 Once installed tap the Staircraft icon to begin.



Joists & Beams					
Ref.	Product description	Length	Quan.	Weight	Cert.
J1	TFSi 47 - 240	3198mm	1	9.3	PEFC
J2	TFSi 47 - 240	2986mm	3	8.7	PEFC
J3	TFSi 47 - 240	2897mm	9	8.4	PEFC
J4	TFSi 47 - 240	2813mm	1	8.2	PEFC
J5	TFSi 47 - 240	2093mm	1	6.1	PEFC
J6	TFSi 47 - 240	1852mm	4	5.4	PEFC
J7	TFSi 47 - 240	1479mm	1	4.3	PEFC
J8	TFSi 47 - 240	1449mm	1	4.2	PEFC
J9	TFSi 47 - 240	1349mm	1	3.9	PEFC
J10	TFSi 47 - 240	438mm	1	1.3	PEFC
J11	TFSi 47 - 240	438mm	1	1.3	PEFC
J12	TFSi 72 Plus - 240	5955mm	2	24.4	PEFC
J13	TFSi 72 Plus - 240	5954mm	22	24.4	PEFC
J14	TFSi 97 Plus - 240	4812mm	1	25.0	PEFC

Beams By Others					
Ref.	Product description	Length	Quan.	Weight	Cert.
BBO1	BBO 133x240	5228mm	1	0.0	

Sacrificial Materials					
Ref.	Product description	Length	Quan.	Weight	Cert.
S:BLK1	TFSi 47 - 240	2813mm	2	8.2	PEFC
S:BLK9	TFSi 47 - 240	1192mm	3	3.5	PEFC
S:H1	TIJ-T-50-240		7		

Blocking					
Ref.	Product description	Length	Quan.	Weight	Cert.
BLK2	TFSi 47 - 240	500mm	1	1.5	PEFC
BLK3	TFSi 47 - 240	553mm	2	1.6	PEFC
BLK4	TFSi 47 - 240	513mm	1	1.5	PEFC
BLK5	TFSi 47 - 240	353mm	2	1.0	PEFC
BLK6	TFSi 47 - 240	328mm	1	1.0	PEFC
BLK7	TFSi 47 - 240	265mm	2	0.8	PEFC
BLK8	TFSi 47 - 240	256mm	4	0.7	PEFC

Ancillary materials					
Ref.	Product description	Length	Quan.	Weight	Cert.
CN1	38x63 Nogging	570mm	1	0.7	PEFC
PN1	Partition Nogging (38x63)	1536mm	1	1.8	PEFC
CN2	22x75mm perimeter bracing	13108mm	1	10.6	
WS1	Web stiffener 141 x 30	100mm	24		PEFC
	UZ-38 Z Clip 38mm		14		
	EB 72240-47		48		PEFC
	EB 97240-47		2		PEFC
	EB 47240-47		34		PEFC
	IS47240-47		3		
Str1	Teco TRS1500B100		5		
ICI1	Iclip 240 f47		4		
Total timber weight				819.2	

Metalwork	
Ref.	Product description
H2	MHE490-150-170
H3	TIJ-T-50-240
H4	UH-50-235

Certification and percentages		
Cert.	Volume(m ³)	%
Total	1.737317104	
FSC	0	0
PEFC	1.737317104	100

Job Information	
File Name	AH2B WC - Rev B.piffd
Design Date	16 July 2019 16:38:57
Software Version No.	4.5.272
Design Engine Ref.	3.7.70.73
Design Settings	
Region	Europe
Country	UK
Design Code	ECS
Vibration Method	System Vibration Method
Strength/Vibration/Deflection (to max.% of allowable)	100/100/100
Design Data	
Altitude	=< 1000m
Manufacturer-Joists & Beams	All
Manufacturer-Hangers	Cullen + Teco
Levels	
Name	Level1
Height (mm)	0
Main Application	Residential Upper Floor
Main Category of Use	A - Residential
Service Class	1
Dead Load (kN/m ²)	0.50 - Permanent
Dead Reduced Load (kN/m ²)	0.00 - Permanent
Partitions Load (kN/m ²)	0.25 - Permanent
Floor Imposed UD Load (kN/m ²)	1.50 - Medium Term
Floor Imposed Concentrated Load (kN)	2.00 - Medium Term
Accidental Load (kN/m ²)	0.00 - Instantaneous
Unet,final Limit (L) (mm)	250 - 0
Ufinal Limit (L) (mm)	250 - 0
Unet,Q Limit (L) (mm)	1 - 10
Unet,final Limit-2 (L) (mm)	250 - 0
Ufinal Limit-2 (L) (mm)	250 - 0
Unet,Q Limit-2 (L) (mm)	1 - 10
Decking Type	Particle Board
Direct Applied Ceiling	Yes
Ceiling Material	15mm - Ceiling (GYPSUM BOARD)

Please note it is the responsibility of the Building Designer to specify centres and locations of all restraint straps. Straps shown on this layout are in accordance with the minimum requirement of BS5268 Pt3.

CDM SAFETY NOTE
When installing joists and masonry wall hangers please refer to Joist and Hanger Manufacturers Installation Guides.

NOTE:
'Hole Chart' to be followed at all times when locating holes for services.

Joist weights are shown in material list

DO NOT SCALE FROM THIS DRAWING

Safety bracing **MUST** be used during the installation of the floor

Setting Out Point →

i41 Typical Sacrificial Joists fixing detail

Please use 3.5x40mm multi-purpose wood screws

Sacrificial Joist

Snap top plate of the hanger & secure screws to all round holes that meet the top and bottom flanges (12nr screws in total)

Trimmer joist

I-joists do not require Backer Blocks when UH hangers are used as detailed

Sacrificial hanger installation video

Safe Working Load for fully nailed hanger as detailed above is 3.00kN (long term)

HOLE CENTRES SHOULD BE NO LESS THAN 300mm

X - 2 x DIAMETER OF LARGEST HOLE

EXCLUDE HOLES FROM THIS ZONE

PERMISSIBLE WEB HOLE SIZES AND LOCATIONS

*** REFER TO TFSI HOLE RULES DOCUMENT FOR MORE INFORMATION ***

LINK TO INTERACTIVE CONSTRUCTION DRAWINGS

i11

I-Clips fully nailed using 3.75x30mm square twist nails through all holes.

Note: 2 Ply I-joist connected using Cullen I-Clips to manufacturers details

Cullen I-Clip n.t.s.

IMPORTANT

DO NOT CUT, MODIFY OR EXTEND THE NOTCH

2no NAILS OR SCREWS THROUGH BRACING

PRE-CUT NOTCH

22x67mm BRACING MATERIAL

STAIRCRAFT PERIMETER NOTCH

i11

UH Hanger fixed using 3.75x30mm square twist nails through all holes

Top plate of hanger bent on site to fit tight over I-joist top flange

I-joists

I-joists do not require Backer Blocks when UH hangers are used as detailed

Safe Working Load for fully nailed hanger as detailed above is 4.63kN (long term)

Hangers to be used fully in accordance with Cullen Building Products specifications

Cullen UH Hanger n.t.s.

i10

38x63mm PARTITION NOGGINS SUPPORTED BY METAL Z-CLIPS AT BOTH ENDS. ATTACH WITH 4no 3.75x30mm SQUARE TWIST NAILS

NON-LOAD BEARING STUD PARTITION FIXED TO NOGGINGS (MAX. SELF-WEIGHT OF PARTITION: 0.8kNm RUN)

JOIST

PARALLEL PARTITION NOGGINGS n.t.s.

i1

NOGGING FITTED TIGHT BETWEEN JOIST AND WALL

PFS RESTRAINT STRAP FIXED USING MIN. 8no 3.75x30mm LONG SQUARE TWIST NAILS

FULL DEPTH I-JOIST BLOCKING SKEW NAILED BETWEEN JOIST FLANGES

LATERAL RESTRAINT FOR MASONRY n.t.s.

B	16/07/19	AR	STAIR OPENING AMENDED
A	10/05/19	AR	FUTURE LIFT OPENING JOISTS REMOVED

Rev : Date : By : Details :

House Type: **AH2B WC**

Drawing Number: **SC 2BWC 01** Rev **B**

Builder: **CREST NICHOLSON**

Date: **5-2-18** Sheet Size: **A3**

Drawn: **AR** Scale: **1:50**

Drawing Detail: **First Floor - 60m² Joist Layout**

Site & Plot Detail:

BODICOTE PH2