

FOUNDATION PLAN

* Indicates Reinforced Laminated Glass (refer to window & door schedule)

PHASE 2 BRICK

FOUNDATION NOTES

Dashed foundation widths are indicative only. Refer to structural engineers and specific foundation plans.
Foundation depths to be agreed on site with the local building inspector and to conform to NBC requirements.
Refer to ground investigation report to establish if radon or any gas measures are required prior to commencement of works on site.
Drawing to be read in conjunction with coordinated site setting out plan by civil engineer.
Provide concrete kerbs over drains where passing through walls.
Refer to co-ordinated Civil Engineers drawings for RWP locations.
Mortar colour to be match below DPC to match that of brickwork above.
Refer to Civil Engineers drawings for Foundations & Finish Floor Levels.

RISK SCHEDULE

ITEM	DESCRIPTION OF RISK & ACTION
⚠	Risk - Handling of large / heavy flat gauges listed Action - A method statement to be provided by installer and approved prior to commencement on site
THIS WORKING DRAWING IS TO BE READ IN CONJUNCTION WITH THE STANDARD CONSTRUCTION NOTES AND THE STANDARD WORKMANSHIP AND MATERIALS SPECIFICATION	

MOVEMENT JOINTS

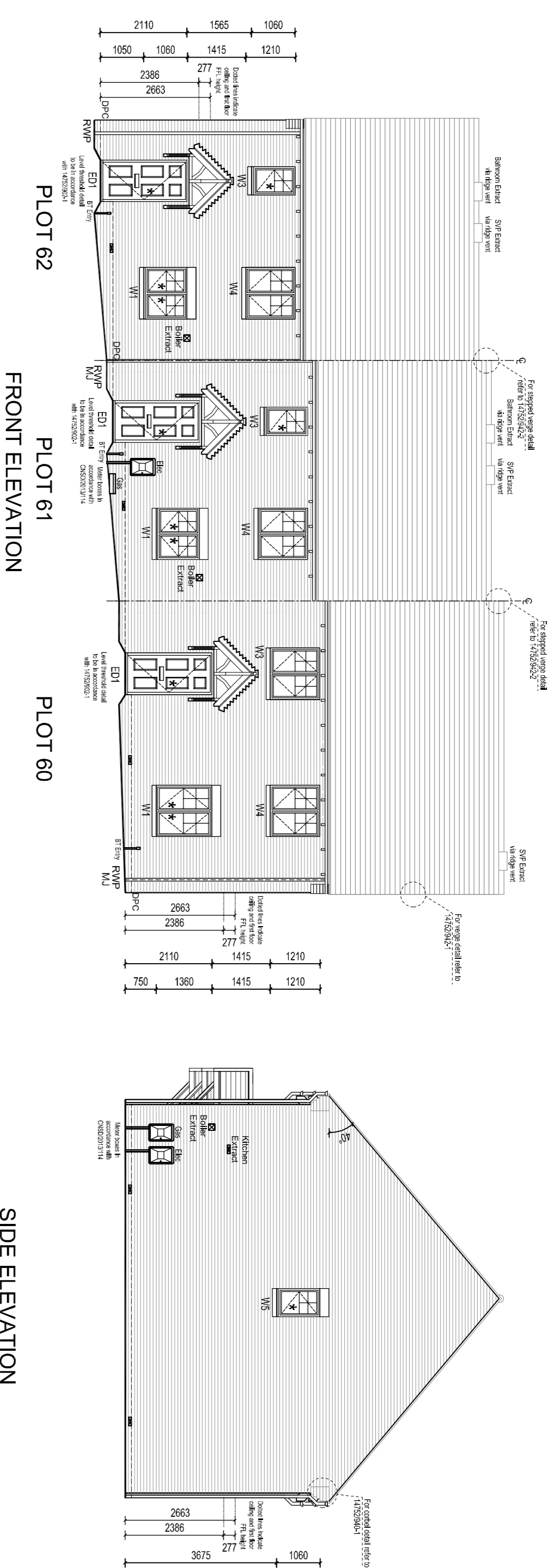
REFER TO STRUCTURAL ENGINEERS INFORMATION FOR ALL MOVEMENT JOINT LOCATIONS

General Rules:

- Joints to be placed at returns and change in height of masonry.
- Movement joints to be placed at returns less than 1m.
- Movement Joints placed around corners and not just in straight.
- Movement Joints should be placed between Render & Brick.
- Movement Joints to be placed at least one block from corner in Render.

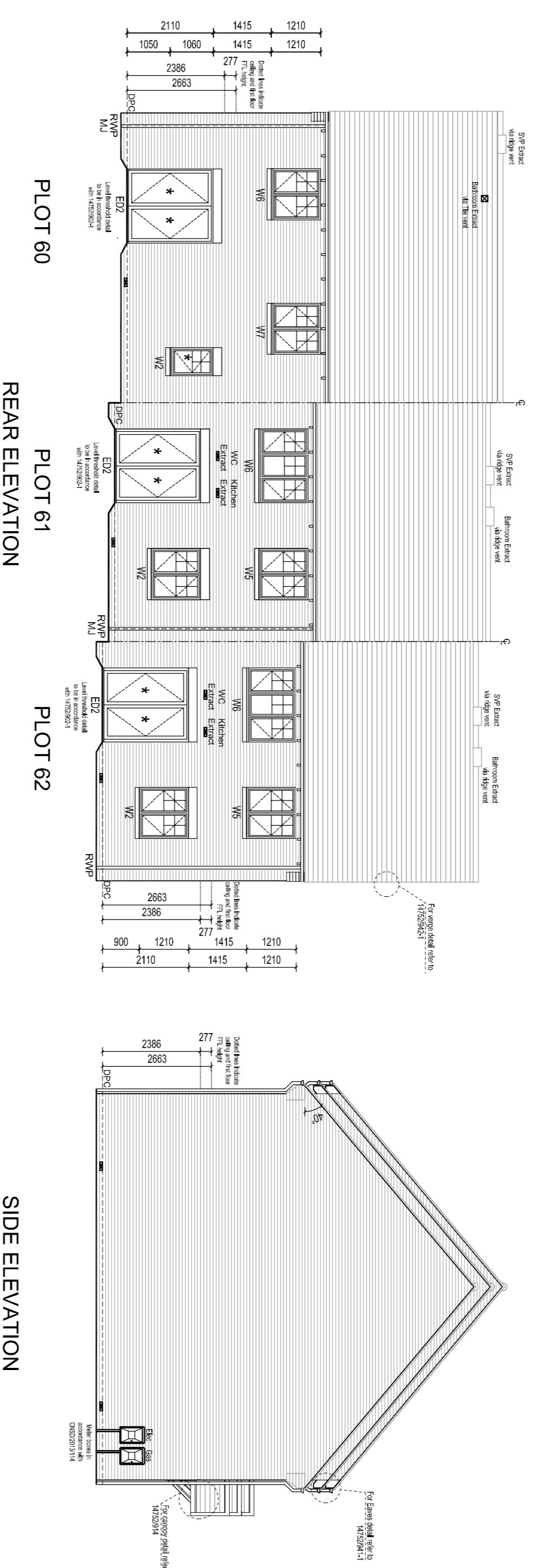
NOTE:
Please refer to services layout drawing for exact position of meter with CHSD2013114

⊠	Location of architraves as indicated on drawings at max. 200mm centres and within 45mm of internal corners. MI: Position of Movement Joint Location.
⊠	Semi-recessed wall mounted Gas Meter Box
⊠	Unit has 4th eye bar. Gas to be divided in accordance with Gas Safe Regulation and undertaken by a Gas Safe engineer.



FRONT ELEVATION

SIDE ELEVATION



REAR ELEVATION

SIDE ELEVATION

C1	CONSTRUCTION ISSUE	30.07.19	LMB
T2	MINOR ANNOTATION REVISED	02.05.19	OR
T1	MINOR ANNOTATION REVISED	02.05.19	OR
P1	GROUNDWORKS ISSUE	17.04.19	OR
P1	PRELIMINARY ISSUE	17.04.19	OR
Rev.	Description.	Date.	Initial.

Drawing Status:

CONSTRUCTION

Crest Nicholson Ltd.
1st Floor Pacific House
Relay point
Wilmcote
Tamworth
B77 5PA
Tel: 0121 435 1100
www.crestnicholson.com

Site: BODICOTE

House Type: AH3B LTH & AH2B WC Unit Size: m² ft²

Drg Title: BLOCK PLANS - PLOT 60, 61, 62

Scale: 1:500 Page Size: A1 Date: MAR 19

Drawing No: 14752/HMA/AH3BLTH/660 Drawn: OR Checked: WGH

Revisions: C1