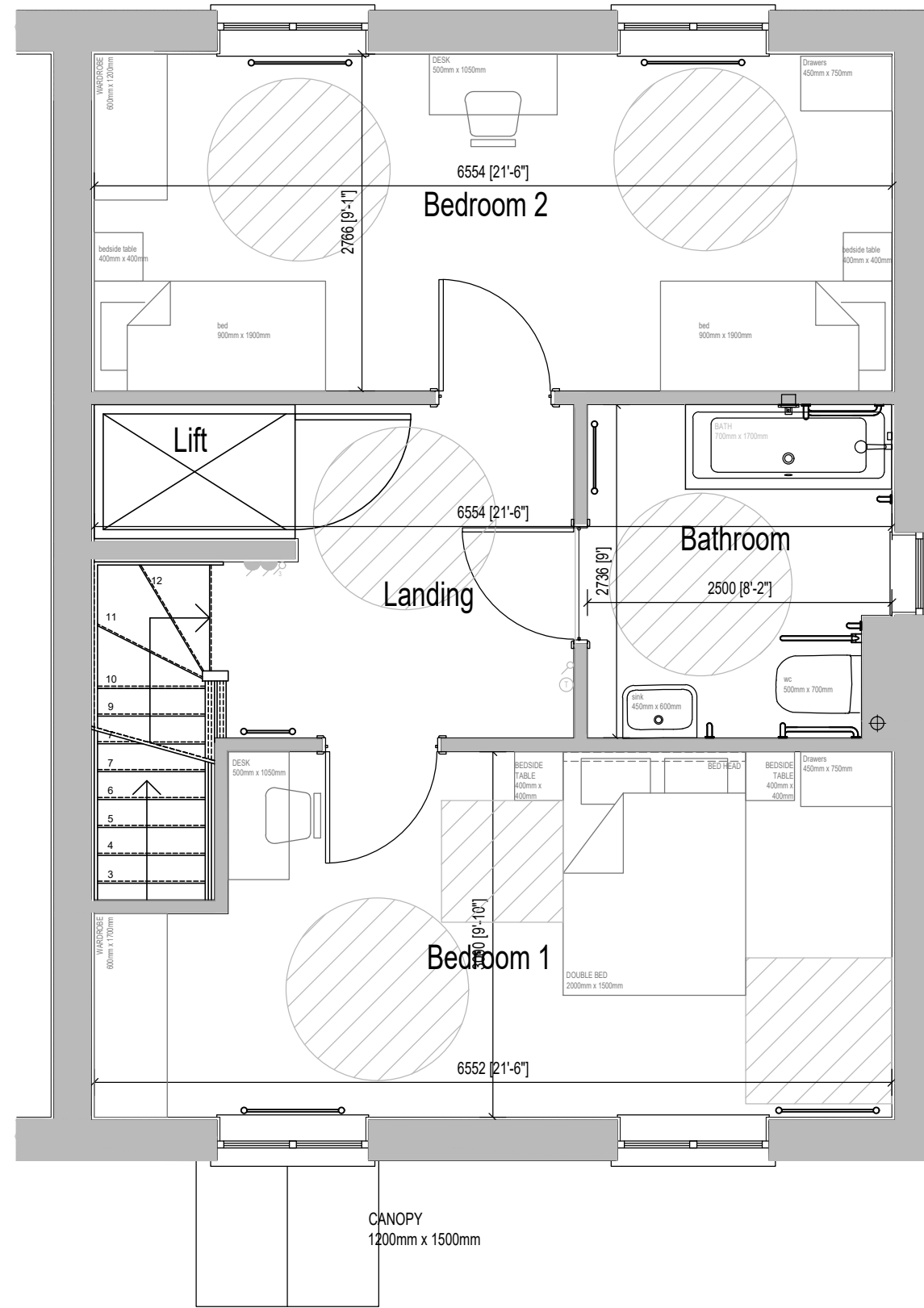
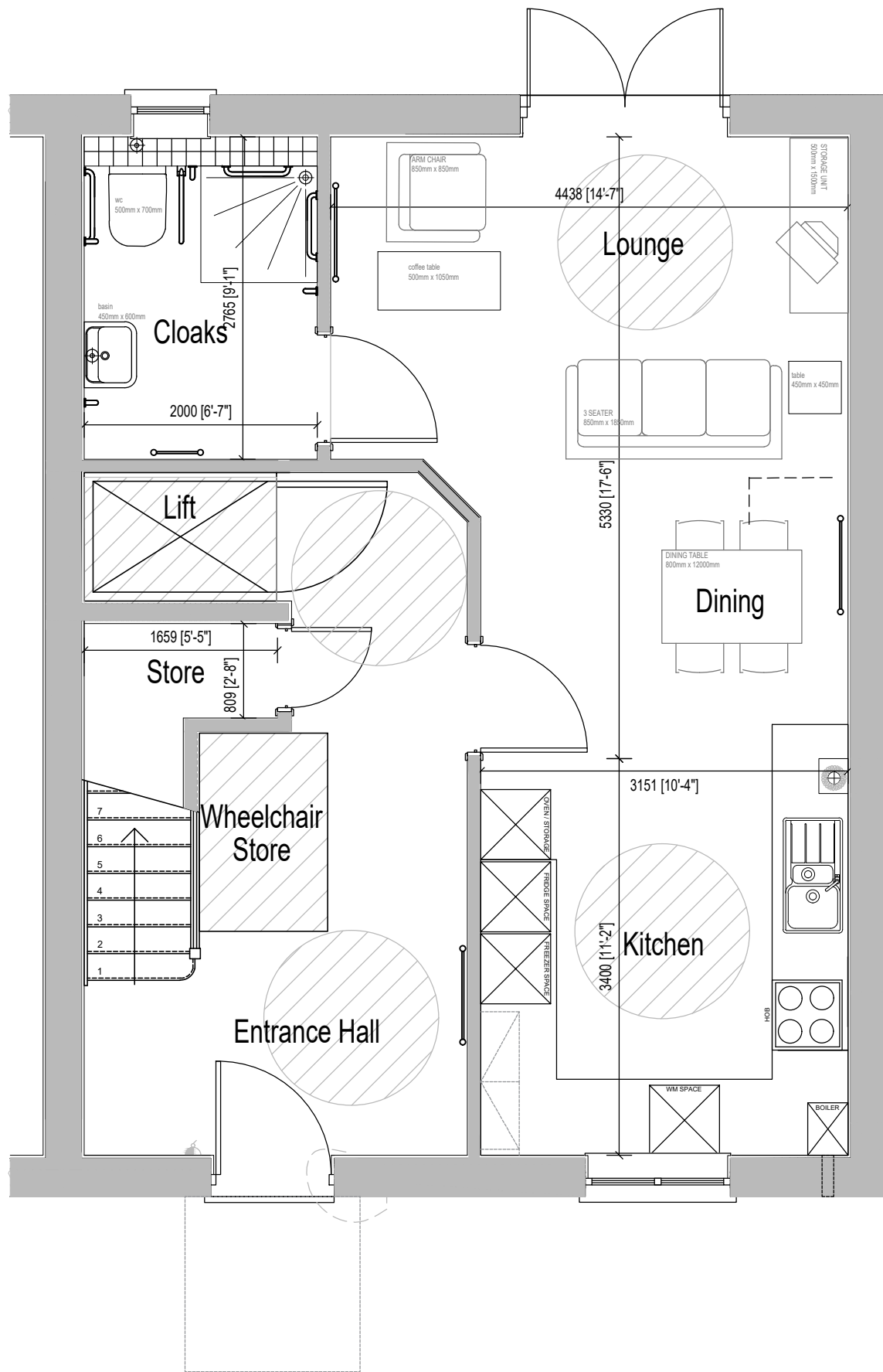


THIS WORKING DRAWING IS TO BE READ IN CONJUNCTION WITH THE CREST STANDARD CONSTRUCTION NOTES AND THE STANDARD WORKMANSHIP AND MATERIALS SPECIFICATION

AS PLAN: 60



Room Sizes

Ground Floor

Location	Room size - Metric	Room size - Imperial
Living Room/Dining	4788mm x 5330mm	15' 9" x 17' 6"
Cloaks	1650mm x 2765mm	5' 5" x 9' 1"
Store	1659mm x 809mm	5' 5" x 2' 8"
Kitchen	3151mm x 3400mm	10' 4" x 11' 2"

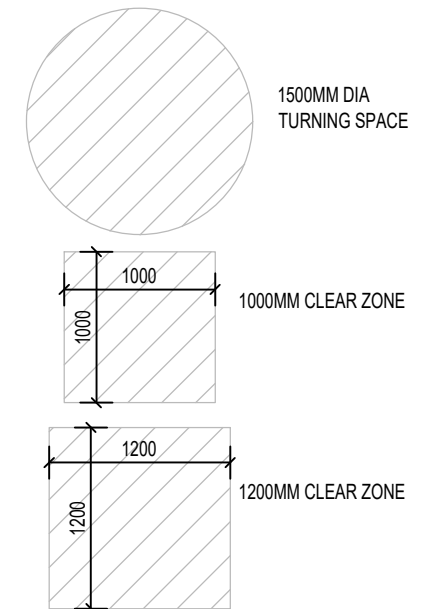
The dimensions indicated on this plan are only accurate to within +/- 50mm (2ins.) and are not intended to be used for carpet sizes, appliance spaces or items of furniture.

Room Sizes

First Floor

Location	Room size - Metric	Room size - Imperial
Bedroom 1	6552mm x 3000mm	21' 6" x 9' 10"
Bedroom 2	6554mm x 2766mm	21' 6" x 9' 1"
Bathroom	27362mm x 2500mm	9' x 8' 2"

The dimensions indicated on this plan are only accurate to within +/- 50mm (2ins.) and are not intended to be used for carpet sizes, appliance spaces or items of furniture.



T4	PART M4(3) PROVISIONS CLARIFIED FURNITURE	JULY 20	DL
T3	PART M4(3) PROVISIONS CLARIFIED	17.08.19	DL
T2	LOBBY PROVIDED TO GROUND FLOOR	23.07.19	DL
T1	TENDER ISSUE	17.05.19	OR
Rev.	Description	Date	Initial

Drawing Status:

TENDER



Crest Nicholson Ltd
1st Floor Pacific House
Relay Point
Winecote
Tamworth
B77 5PA
Tel: 0121 435 1100
www.crestnicholson.com

Site:	BODICOTE		
House Type:	AH2B WC	Unit Size:	116 m ² 1249 ft ²
Drq Title:	GROUND & FIRST FLOOR SALES PLAN		
Scale:	1:50	Page Size:	A3 Date: MAY 19
		Drawn:	OR
		Checked:	DL

Drawing No: 14752-HMA-AH2BWC-GF/FF-A-1080 T4 Revision: