

KEY

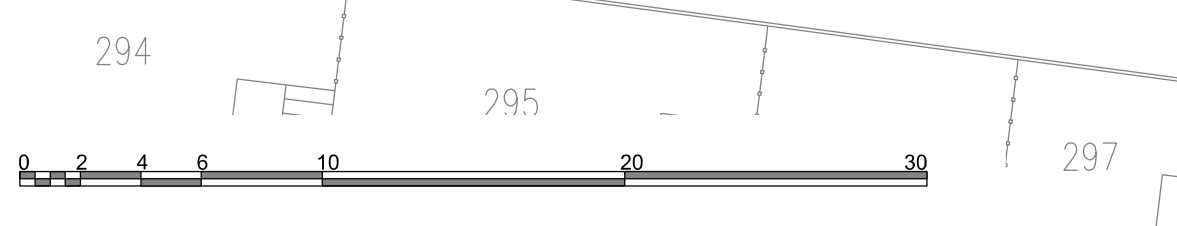
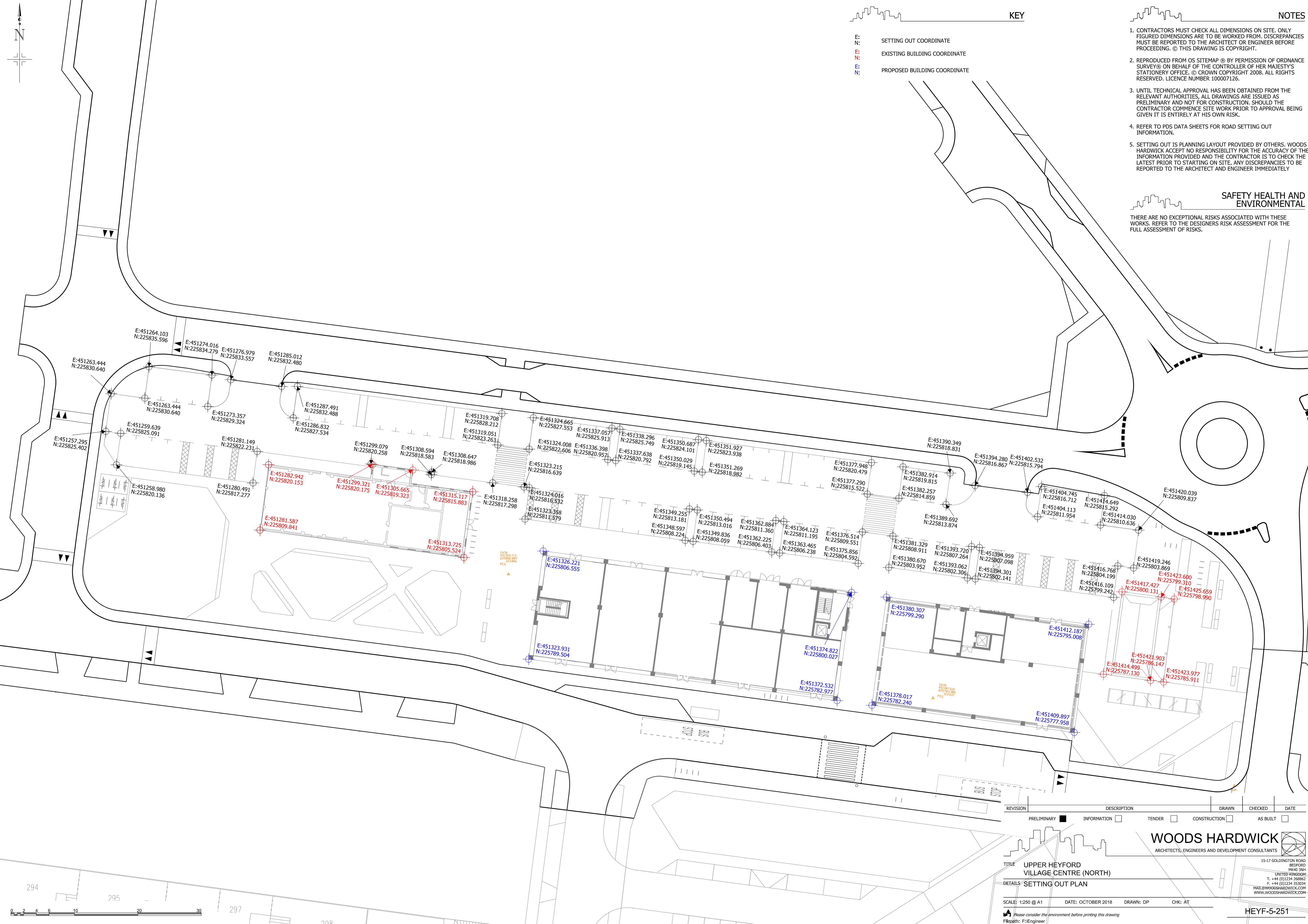
- E: SETTING OUT COORDINATE
- N: EXISTING BUILDING COORDINATE
- E: PROPOSED BUILDING COORDINATE

NOTES

1. CONTRACTORS MUST CHECK ALL DIMENSIONS ON SITE. ONLY FIGURED DIMENSIONS ARE TO BE WORKED FROM. DISCREPANCIES MUST BE REPORTED TO THE ARCHITECT OR ENGINEER BEFORE PROCEEDING. © THIS DRAWING IS COPYRIGHT.
2. REPRODUCED FROM OS SITEMAP @ BY PERMISSION OF ORDNANCE SURVEY® ON BEHALF OF THE CONTROLLER OF HER MAJESTY'S STATIONERY OFFICE. © CROWN COPYRIGHT 2008. ALL RIGHTS RESERVED. LICENCE NUMBER 100007126.
3. UNTIL TECHNICAL APPROVAL HAS BEEN OBTAINED FROM THE RELEVANT AUTHORITIES, ALL DRAWINGS ARE ISSUED AS PRELIMINARY AND NOT FOR CONSTRUCTION. SHOULD THE CONTRACTOR COMMENCE SITE WORK PRIOR TO APPROVAL BEING GIVEN IT IS ENTIRELY AT HIS OWN RISK.
4. REFER TO PDS DATA SHEETS FOR ROAD SETTING OUT INFORMATION.
5. SETTING OUT IS PLANNING LAYOUT PROVIDED BY OTHERS. WOODS HARDWICK ACCEPT NO RESPONSIBILITY FOR THE ACCURACY OF THE INFORMATION PROVIDED AND THE CONTRACTOR IS TO CHECK THE LATEST PRIOR TO STARTING ON SITE. ANY DISCREPANCIES TO BE REPORTED TO THE ARCHITECT AND ENGINEER IMMEDIATELY.

SAFETY HEALTH AND ENVIRONMENTAL

THERE ARE NO EXCEPTIONAL RISKS ASSOCIATED WITH THESE WORKS. REFER TO THE DESIGNERS RISK ASSESSMENT FOR THE FULL ASSESSMENT OF RISKS.



REVISION	DESCRIPTION	DRAWN	CHECKED	DATE
PRELIMINARY	INFORMATION	TENDER	CONSTRUCTION	AS BUILT

WOODS HARDWICK
ARCHITECTS, ENGINEERS AND DEVELOPMENT CONSULTANTS

15-17 GOLDINGTON ROAD
BEDFORD MK40 3JH
UNITED KINGDOM
T. +44 (0)1234 268862
F. +44 (0)1234 268834
MAIL@WOODSHARDWICK.COM
WWW.WOODSHARDWICK.COM

TITLE: UPPER HEYFORD VILLAGE CENTRE (NORTH)
DETAILS: SETTING OUT PLAN

SCALE: 1:250 @ A1 DATE: OCTOBER 2018 DRAWN: DP CHK: AT

Please consider the environment before printing this drawing
Filepath: F:\Engineer

HEYF-5-251