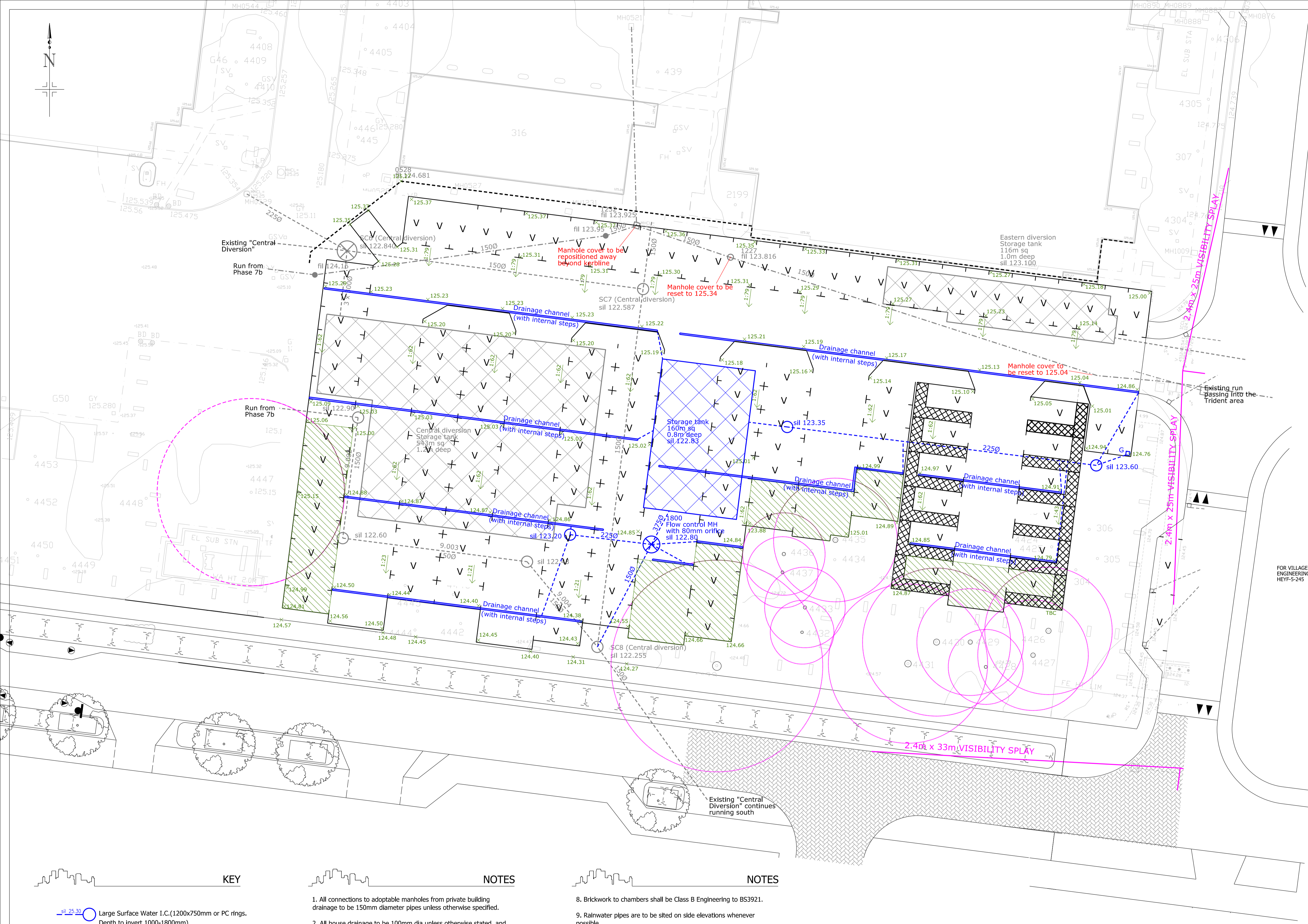

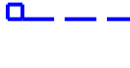






1. CONTRACTORS MUST CHECK ALL DIMENSIONS ON SITE. ONLY FIGURED DIMENSIONS ARE TO BE WORKED FROM. DISCREPANCIES MUST BE REPORTED TO THE ARCHITECT OR ENGINEER BEFORE PROCEEDING. © THIS DRAWING IS COPYRIGHT.
2. REPRODUCED FROM OS SITEMAP © BY PERMISSION OF ORDNANCE SURVEY® ON BEHALF OF THE CONTROLLER OF HER MAJESTY'S STATIONERY OFFICE. © CROWN COPYRIGHT 2008. ALL RIGHTS RESERVED. LICENCE NUMBER 100007126.
3. UNTIL TECHNICAL APPROVAL HAS BEEN OBTAINED FROM THE RELEVANT AUTHORITIES, ALL DRAWINGS ARE ISSUED AS PRELIMINARY AND NOT FOR CONSTRUCTION. SHOULD THE CONTRACTOR COMMENCE SITE WORK PRIOR TO APPROVAL BEING GIVEN IT IS ENTIRELY AT HIS OWN RISK.



FOR VILLAGE CENTRE NORTH ENGINEERING LAYOUT SEE DRAWING HEYF-5-245

KEY

-  Large Surface Water I.C. (1200x750mm or PC rings). Depth to invert 1000-1800mm
-  Yard gully
-  Drainage Channel to be ACO MultiDrain 150 or similar approved
-  Constructed or approved FW drainage
-  Constructed or approved SW drainage
-  Area of grasscrete construction

NOTES

1. All connections to adoptable manholes from private building drainage to be 150mm diameter pipes unless otherwise specified.
2. All house drainage to be 100mm dia unless otherwise stated, and laid in accordance with current Building Regulations and BS8301 : 1985.
3. All private drainage products are to be Polypipe or similar approved.
4. Pipe bedding material is to be Class S with 150mm minimum thickness surround.
5. Backfill is to be with selected fill free of stones larger than 40mm, lumps of clay over 100mm, timber, frozen material and vegetable matter.
6. Pipe protection of house drainage runs is required in accordance with the Typical House Drainage Details drawing. The contractor shall satisfy themselves and agree with the Site Management the actual extent of pipe protection required.
7. Pipes entering and leaving manholes/inspection chambers shall include a rocker pipe, 600mm in length.

NOTES

8. Brickwork to chambers shall be Class B Engineering to BS3921.
9. Rainwater pipes are to be sited on side elevations whenever possible.
10. All retaining walls with a height of 600mm or greater are to include 1.2m high post and rail fencing unless located in rear gardens. Similar retaining walls in rear gardens are to include 900mm height picket fence.
11. All flights of steps to primary level access, with more than 2 steps are to be provided with handrailing, except where the steps are 900mm are more apart.
12. Drainage and road design subject to Water and Highway Authority approval.
13. Edge restraint to private/blockwork - 2 stretcher course (unless noted otherwise).



REVISION	DESCRIPTION	DRAWN	CHECKED	DATE
PRELIMINARY	INFORMATION	TENDER	CONSTRUCTION	AS BUILT

WOODS HARDWICK
ARCHITECTS, ENGINEERS AND DEVELOPMENT CONSULTANTS

TITLE: UPPER HEYFORD VILLAGE CENTRE NORTH PARKING (PART OF PARCEL D2d)
DETAILS: PROPOSED ENGINEERING LAYOUT

SCALE: A1- 1:200 DATE: AUGUST 2018 DRAWN: AT CHK: JF

15-17 GOLDINGTON ROAD BEDFORD, MK40 3JH T: +44 (0)1234 268662 FORT DUNLOP FORT PARKWAY BIRMINGHAM, B24 9FE UNITED KINGDOM T: +44 (0)121 6297700 MAIL@WOODSHARDWICK.COM WWW.WOODSHARDWICK.COM

HEYF-5-246

Please consider the environment before printing this drawing
Filepath: F:\Engineer