

Legend

PUBLIC_RIGHTS_OF_WAY STATUS

- Public Footpath
- Public Bridleway
- Restricted Byway
- Byway Open to all Traffic
- SWIFT_RECORDS
- PROTECTED_AND_NOTABLE_SPECIES
- PROTECTED_SPECIES_BUFFER
- ROAD_VERGE_NATURE_RESERVES
- EIL_TEXT
- ASSETS OF COMMUNITY VALUE

- Area TPOs
- Group TPOs
- TPO Trees
- Woodland TPOs

LISTED BUILDINGS

- GRADE**
- I
 - II*
 - II
 - DL
- CURTLAGE LISTING**
- LOCALLY_LISTED_BUILDINGS
 - ARTICLE_4
- ARCHAEOLOGICAL CONSTRAINT PRIORITY AREAS**
- SCHEDULED ANCIENT MONUMENT
 - EIL_REGIONS
 - PONDS_MAPPING (INCLUDING GREAT CRESTED NEWTS)
 - NERC ACT S41 Habitats (Previously UKBAP PRIORITY HABITATS)
 - REGISTERED_COMMON_LAND
 - SPECIAL_SITES_OF_SCIENTIFIC_INTEREST
 - SPECIAL AREAS OF CONSERVATION
 - ANCIENT WOODLAND
 - CONSERVATION AREAS
 - DISTRICT WILDLIFE SITES
 - LOCAL WILDLIFE SITES
 - PROPOSED_NEW_LWS_AND_EXTENSIONS_LWS
 - LOCAL NATURE RESERVE
 - PARKS AND GARDENS
 - AREAS OF OUTSTANDING NATURAL BEAUTY
 - RAILWAY TUNNEL
 - HIGH PRESSURE GAS PIPELINES
 - LGS_POINTS
 - LGS_POLYGONS

EA LANDFILL SITES

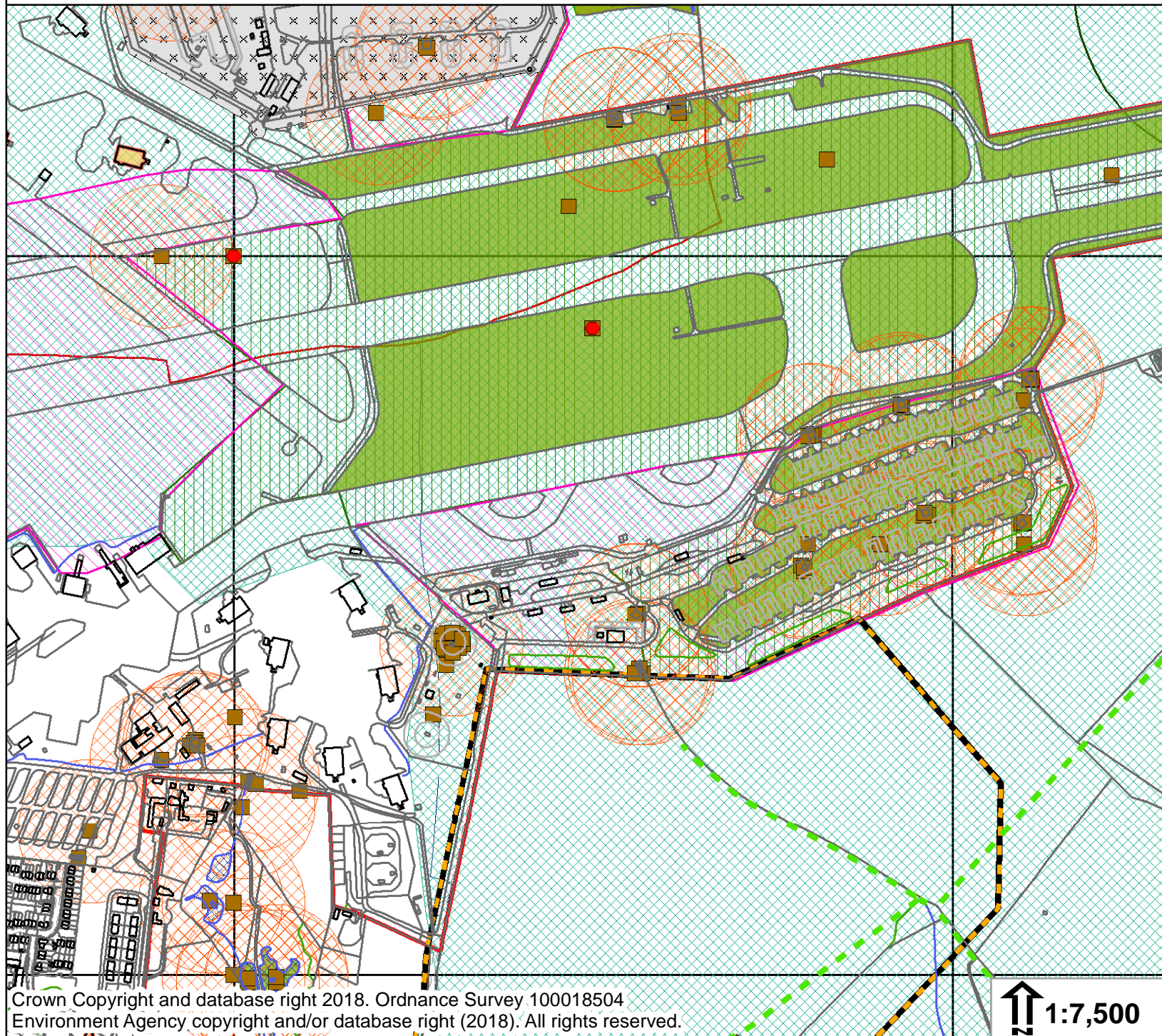
- Buffer Distance**
- 0
 - 250
 - HISTORIC LANDFILL SITES_10K
 - BANK TOP WIDTH PLANNING
 - CRT HOUSEHOLD AND MINOR SCALE DEVELOPMENTS
 - CRT EIA AND MAJOR SCALE DEVELOPMENTS
 - Flood Zone 3
 - Flood Zone 2
 - NAT_FSA
 - NAT_DEFENCES
 - NAT AREAS BENEFIT
 - NAT CENTRELINES

HS2 SAFEGUARDING ZONES

- Type**
- Safeguarding Limits
 - Sub-Surface
 - Surface
 - NATURALLY ELEVATED ARSENIC
 - GREEN BELT
 - CONSERVATION TARGET AREAS
 - CONSERVATION TARGET AREAS NEW_EXTENSIONS_MODIFICATIONS
 - MINERAL CONSULTATION REGION

Neighbourhood Development Plans

- Details**
- Neighbourhood Plan Area
 - Important Amenity Green Spaces
 - Local Green Spaces
 - NATIONAL_GRID_REFERENCE
 - WARDS
 - PARISHES



Crown Copyright and database right 2018. Ordnance Survey 100018504
Environment Agency copyright and/or database right (2018). All rights reserved.

↑ 1:7,500