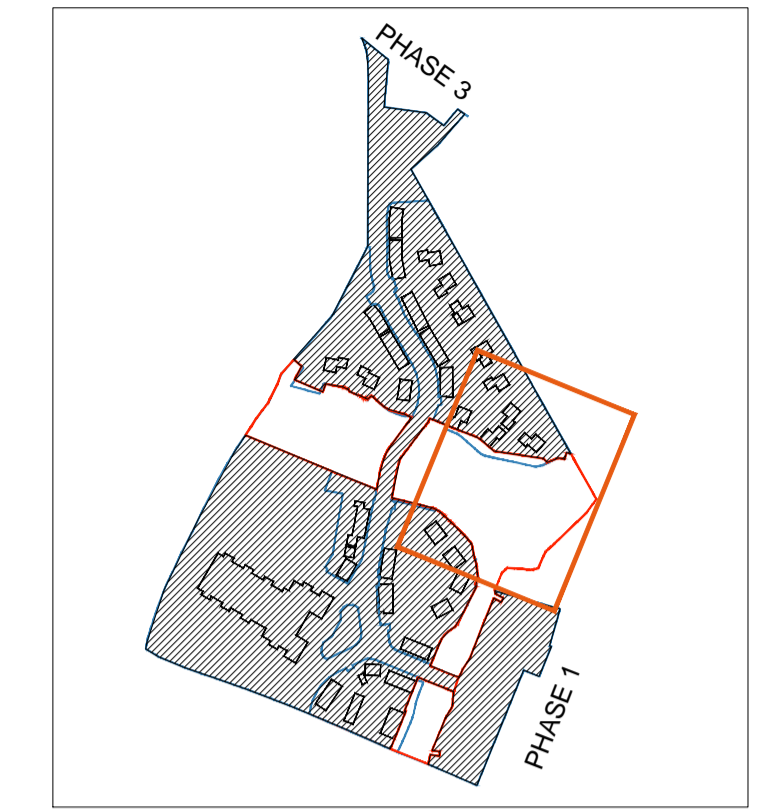
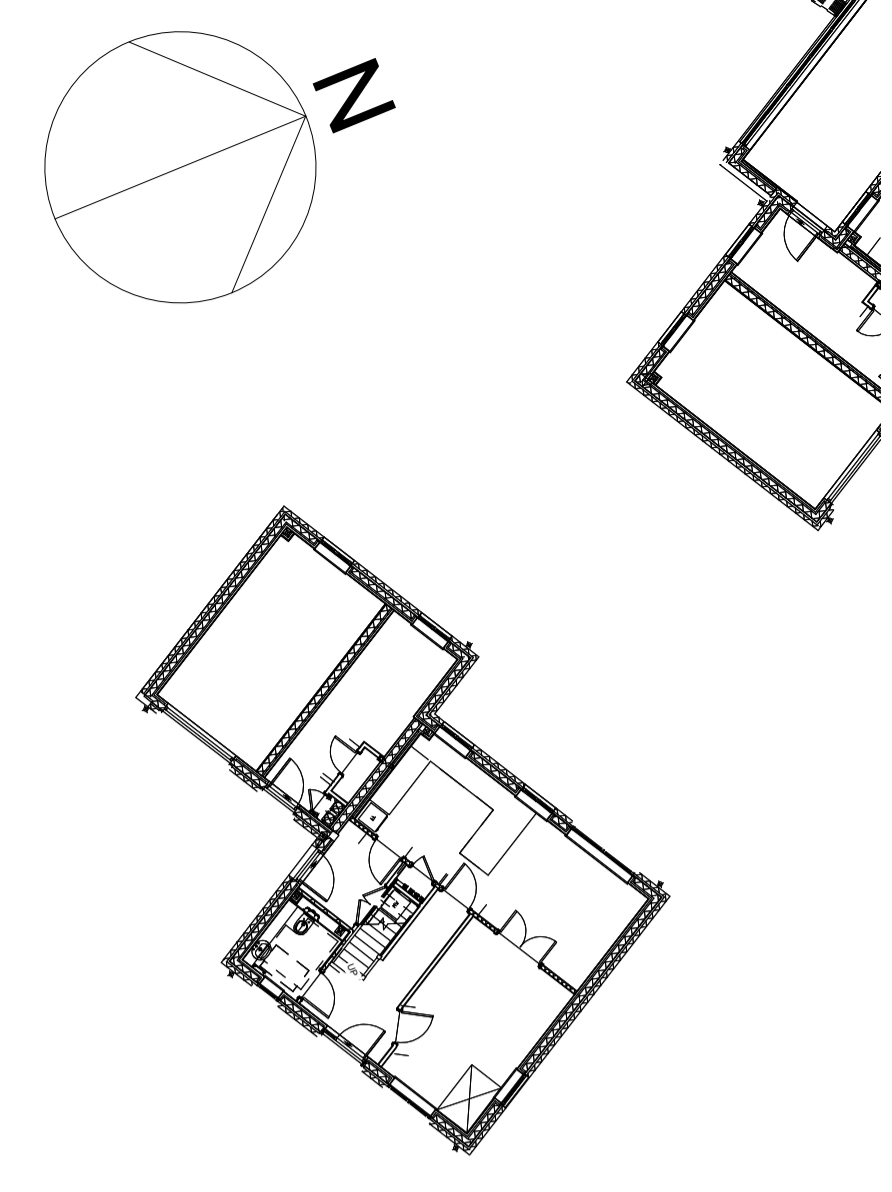
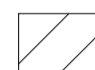




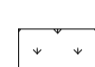










The contractor is responsible for checking dimensions, tolerances and references. Any discrepancy to be verified with the Architect before proceeding with the works. Where an item is covered by drawings to different scales the larger scale drawing is to be worked to.
 Do not scale drawing. Figured dimensions to be worked to in all cases.
 CDM REGULATIONS 2015. All current drawings and specifications for the project must be read in conjunction with the Designer's Hazard and Environment Assessment Record
 All intellectual property rights reserved.



- KEY**
-  Phase 1 Area by others
 -  Flexible bituminous wearing course - Black to match phase 1
 -  50mm pcc edging
 -  Desford I L Bench by Broxap or similar approved. Ref: BX12 Desford IL. Dimension: 3000 x 480 x 440mm
 -  Railing refer to drawing 3907
 -  Species rich grassland mix: Refer to planting plans for more detail
 -  Bank planting to Tensar specifications
 -  Proposed tree: Refer to planting plans for more detail
 -  Existing trees. *taken from Hyder drawings to be confirmed on site
 -  Suds planting: Refer to planting plans for more detail
 -  Flood zone - information taken from Hyder drawings
 -  Badger Settle - minimal disturbance

Translocated hedgerow installed as part of Ph1 works

B 17.07.17	Key amended	MQ
A 06.07.17	Notes added	MQ
- 16.05.17	First Issue	RC MQ
Rev	Date	Description
		Dwn Ckd

Bicester Eco Town Exemplar Site Phase 2
 River Corridor
 General Arrangement

AL6157C_3901 **REV B**
INFORMATION
 Drawn RC Checked MQ Date 18.11.16 Scale @ A1 1:200