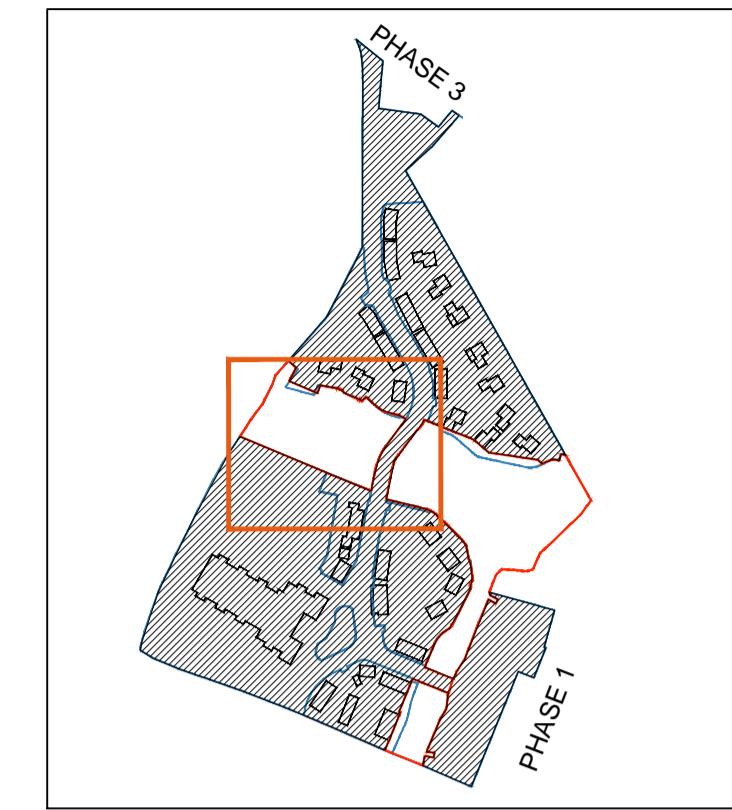





The contractor is responsible for checking dimensions, tolerances and references. Any discrepancy to be verified with the Architect before proceeding with the works. Where an item is covered by drawings to different scales the larger scale drawing is to be worked to.

Do not scale drawing. Figured dimensions to be worked to in all cases.

CDM REGULATIONS 2015. All current drawings and specifications for the project must be read in conjunction with the Designer's Hazard and Environment Assessment Record

All intellectual property rights reserved.



-  Meadow Planting. Mix EM6 by Emorsgate Seeds planted 5g/m<sup>2</sup>  
**TOTAL AREA: 9403m<sup>2</sup>**
-  SUDS Planting. Mix EP1 by Emorsgate Seeds planted 5g/m<sup>2</sup>  
**TOTAL AREA: 392m<sup>2</sup>**
-  Ephemeral habitat scrapes not planted

**LANDSCAPE/PLANTING NOTES**

1. Plant material to conform to the National Plant Specification. All planting stock to originate from within the UK. Plant handling and planting operations to be in accordance with MTA 'Handling and Establishing Landscape Plants'. Parts I-III.
2. Topsoil to be fertile with maximum 35% clay content and 5% maximum organic content pts 5.8-7.5 and to be free of perennial weeds, weed seeds and contamination. Maximum stone content 20% (20mm+particle size), maximum size of stones 50mm in any direction. Existing topsoil to be ameliorated and/or screened if necessary to achieve this specification.
3. Imported topsoil to be to BS 3882: General Purpose Grade, from an approved source, and to accord with the above specification. All compost, mulches & soil conditioners to be peat-free. A minimum 25% of all vegetation to be reared in peat free compost.

**TREES**

4. Trees to be planted in pits (Refer to details for tree pit sizes), backfilled with selected topsoil mixed with 20% peat free organic tree planting compost and 150g 'Sierrablen Flora' slow release fertiliser. Base of pit to be broken up to 150mm depth, incorporating coarse sand or grit if required for drainage. Soil beneath pit to be sterile water permeable subsoil.
5. Extra Heavy Standard & Semi-mature trees to be supported by deadman guying system refer to details for further information.

**PLANTING BEDS**

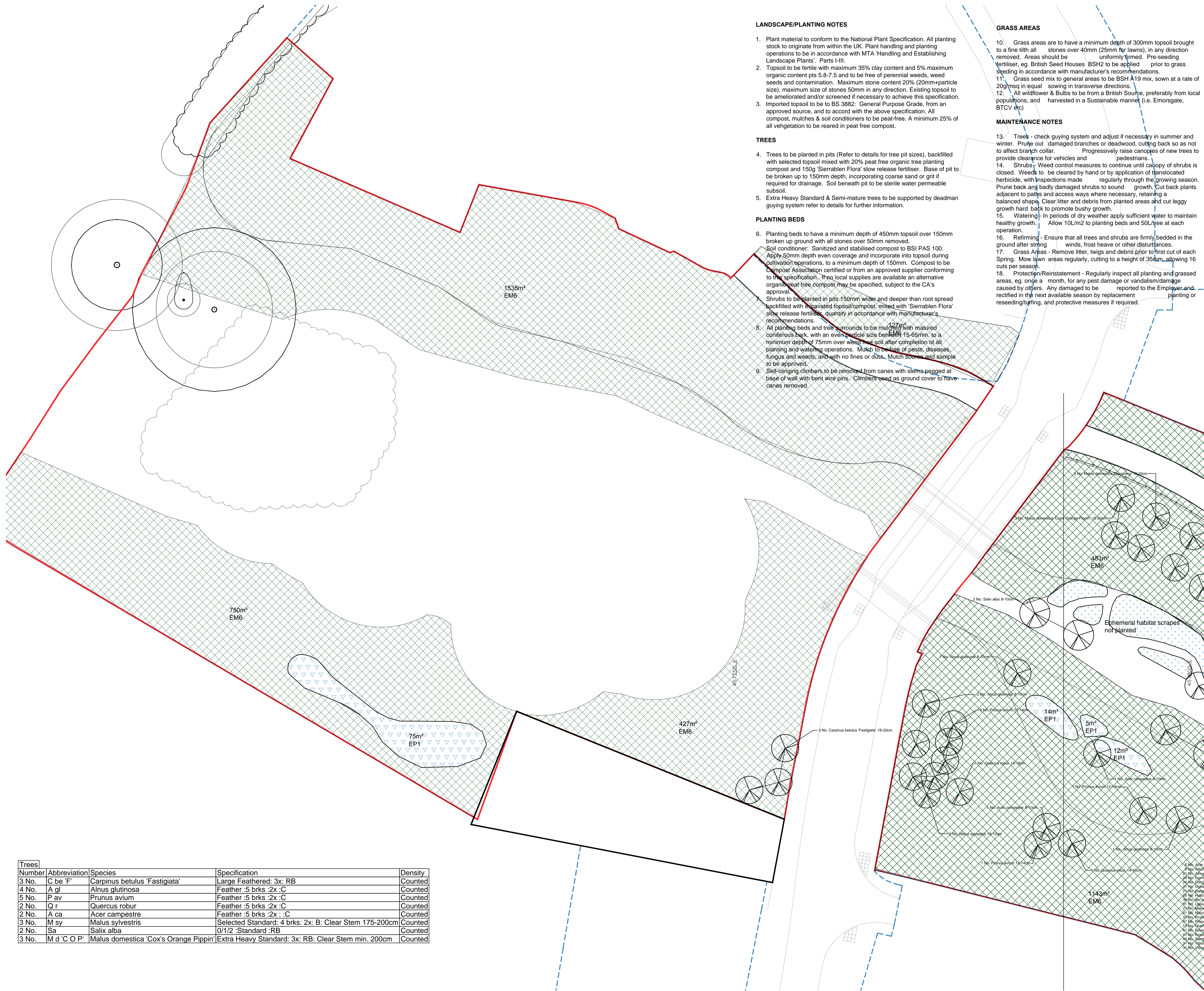
6. Planting beds to have a minimum depth of 450mm topsoil over 150mm broken up ground with all stones over 50mm removed.  
Soil conditioner: Sanitized and stabilised compost to BSI PAS 100. Apply 50mm depth even coverage and incorporate into topsoil during cultivation operations, to a minimum depth of 150mm. Compost to be Compost Association certified or from an approved supplier conforming to the specification. If no local supplies are available an alternative organic peat free compost may be specified, subject to the CA's approval.
7. Shrubs to be planted in pits 150mm wider and deeper than root spread backfilled with excavated topsoil/compost, mixed with 'Sierrablen Flora' slow release fertiliser, quantity in accordance with manufacturer's recommendations.
8. All planting beds and tree surrounds to be mulched with matured coniferous bark, with an even particle size between 15-65mm, to a minimum depth of 75mm over weed free soil after completion of all planting and watering operations. Mulch to be free of pests, diseases, fungus and weeds, and with no fines or dust. Mulch sources and sample to be approved.
9. Self-clinging climbers to be removed from canes with stems pegged at base of wall with bent wire pins. Climbers used as ground cover to have canes removed.

**GRASS AREAS**

10. Grass areas are to have a minimum depth of 300mm topsoil brought to a fine tilth all stones over 40mm (25mm for lawns), in any direction removed. Areas should be uniformly tirmed. Pre-seeding fertiliser, eg. British Seed Houses BSH2 to be applied prior to grass seeding in accordance with manufacturer's recommendations.
11. Grass seed mix to general areas to be BSH A19 mix, sown at a rate of 20g/m<sup>2</sup> in equal sowing in transverse directions.
12. All wildflower & Bulbs to be from a British Source, preferably from local populations, and harvested in a Sustainable manner (i.e. Emorsgate, BTCV etc)

**MAINTENANCE NOTES**

13. Trees - check guying system and adjust if necessary in summer and winter. Prune out damaged branches or deadwood, cutting back so as not to affect branch collar. Progressively raise canopies of new trees to provide clearance for vehicles and pedestrians.
14. Shrubs - Weed control measures to continue until canopy of shrubs is closed. Weeds to be cleared by hand or by application of translocated herbicide, with inspections made regularly through the growing season. Prune back any badly damaged shrubs to sound growth. Cut back plants adjacent to paths and access ways where necessary, retaining a balanced shape. Clear litter and debris from planted areas and cut leggy growth hard back to promote bushy growth.
15. Watering - In periods of dry weather apply sufficient water to maintain healthy growth. Allow 10L/m<sup>2</sup> to planting beds and 50L/tree at each operation.
16. Refirming - Ensure that all trees and shrubs are firmly bedded in the ground after strong winds, frost heave or other disturbances.
17. Grass Areas - Remove litter, twigs and debris prior to first cut of each Spring. Mow lawn areas regularly, cutting to a height of 35mm, allowing 16 cuts per season.
18. Protection/Reinstatement - Regularly inspect all planting and grassed areas, eg. once a month, for any pest damage or vandalism/damage caused by others. Any damaged to be reported to the Employer and rectified in the next available season by replacement planting or reseeded/turfing, and protective measures if required.



Trees				
Number	Abbreviation	Species	Specification	Density
3 No.	C be 'F'	Carpinus betulus 'Fastigiata'	Large Feathered: 3x: RB	Counted
4 No.	A gl	Alnus glutinosa	Feather :5 brks :2x :C	Counted
5 No.	P av	Prunus avium	Feather :5 brks :2x :C	Counted
2 No.	Q r	Quercus robur	Feather :5 brks :2x :C	Counted
2 No.	A ca	Acer campestre	Feather :5 brks :2x :C	Counted
3 No.	M sy	Malus sylvestris	Selected Standard: 4 brks: 2x: B: Clear Stem 175-200cm	Counted
2 No.	Sa	Salix alba	0/1/2 :Standard :RB	Counted
3 No.	M d 'C O P'	Malus domestica 'Cox's Orange Pippin'	Extra Heavy Standard: 3x: RB: Clear Stem min. 200cm	Counted

Rev	Date	Description	RC	MQ	Dwn	Ckd
-	16.05.17	First Issue				

**Bicester Eco Town Exemplar Site Phase 2**  
River Corridor  
Planting Plan 3 of 3

**AL6157C\_3905** **REV -**  
**INFORMATION**

Drawn	RC	Checked	MQ	Date	18.11.16	Scale	@ A1 1:200
-------	----	---------	----	------	----------	-------	------------