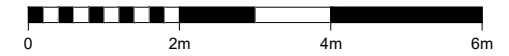


scale 1:100



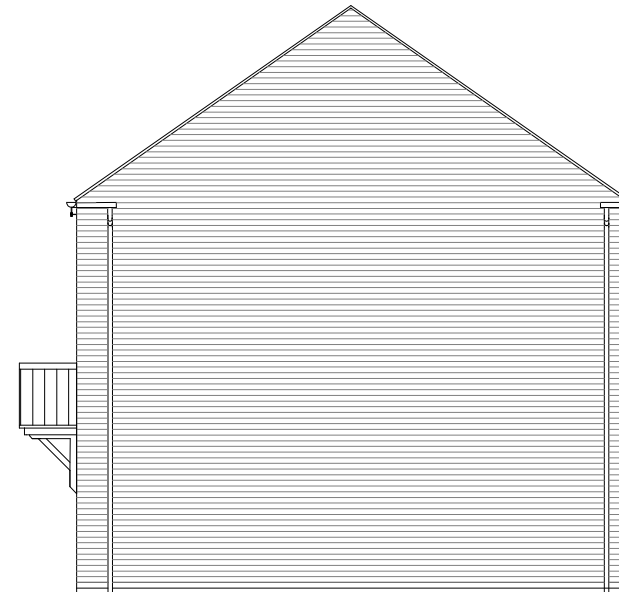
NOTES

| REV | DESCRIPTION | DATE | AUTH | CHK'D |
|-----|---|------------|------|-------|
| A | Thornton front ele windows revised. Wykham eaves lowered. Porch canopies simplified | 15.05.2020 | PH | PH |



**WYK
FRONT ELEVATION**

THO

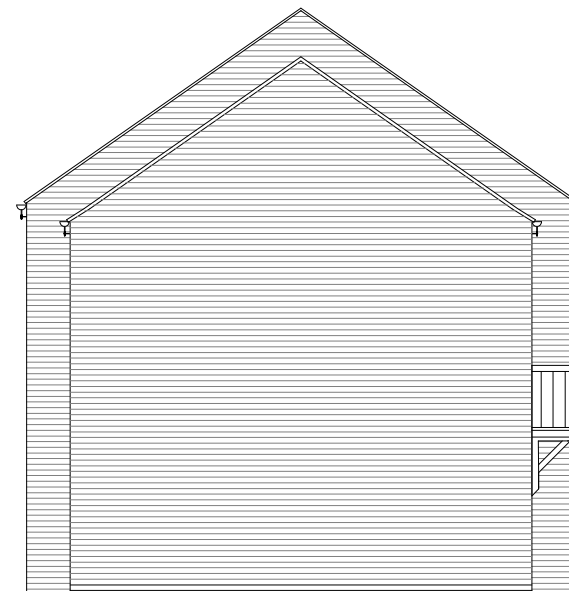


**THO
SIDE ELEVATION**



**THO
REAR ELEVATION**

WYK



**WYK
SIDE ELEVATION**



PROJECT
Bodicote

DRAWING
House Type Planning Drawing
House Type: Thornton & Wykam (Semi)
Elevations - Sheet 2 of 2

| SCALE | DATE | AUTHOR | REV |
|----------|--------|--------|-----|
| 1:100@A3 | Nov 19 | IR | A |

| JOB NO. | DRAWING NO. |
|---------|-------------|
| 7942 | BOD.HT.135 |

CHARACTER AREA:
Neighbourhood

| | | | | |
|-----------|----------|-----------|-------|---|
| Housetype | Wykham | Variation | Brick | PLOT No. As Drawn: 274. Opposite: |
| Bedrooms | 3 | Persons | 5 | |
| Sq.ft | 1093 | Sq.m | 101.5 | |
| Housetype | Thornton | Variation | Brick | PLOT No. As Drawn: 273. Opposite: |
| Bedrooms | 4 | Persons | 7 | |
| Sq.ft | 1191 | Sq.m | 110.7 | |