

RETAINING WALL KEY

- REFER TO DETAIL A - 1250 HIGH RETAINING WALL
- REFER TO DETAIL B - 750 HIGH RETAINING WALL
- REFER TO DETAIL C - 550 HIGH RETAINING WALL

REV	DATE	AMENDMENT	BY	CHKD
C	09.06.21	NOTES ADDED, DETAILS ADDED	DD	CCL
B	21.05.21	ACCESS STAIRS REMOVED TO SUIT RETAINING WALL AMENDED TO SUIT	DD	CCL
A	14.05.21	WALLS UPDATED TO REFLECT LATEST SITE LEVELS, GENERAL NOTES ADDED TO SECTIONS FOR PRELIMINARY ISSUE	DD	CCL
-	09.11.20	PRELIMINARY ISSUE	DD	CHKO

Construction

PROJECT: Emsbrook Neighbourhood Centre NW Bicester

CLIENT: a2dominion

DRAWING: Retaining Walls

DATE: Nov 20

SCALE: (B1): 1:100, 20

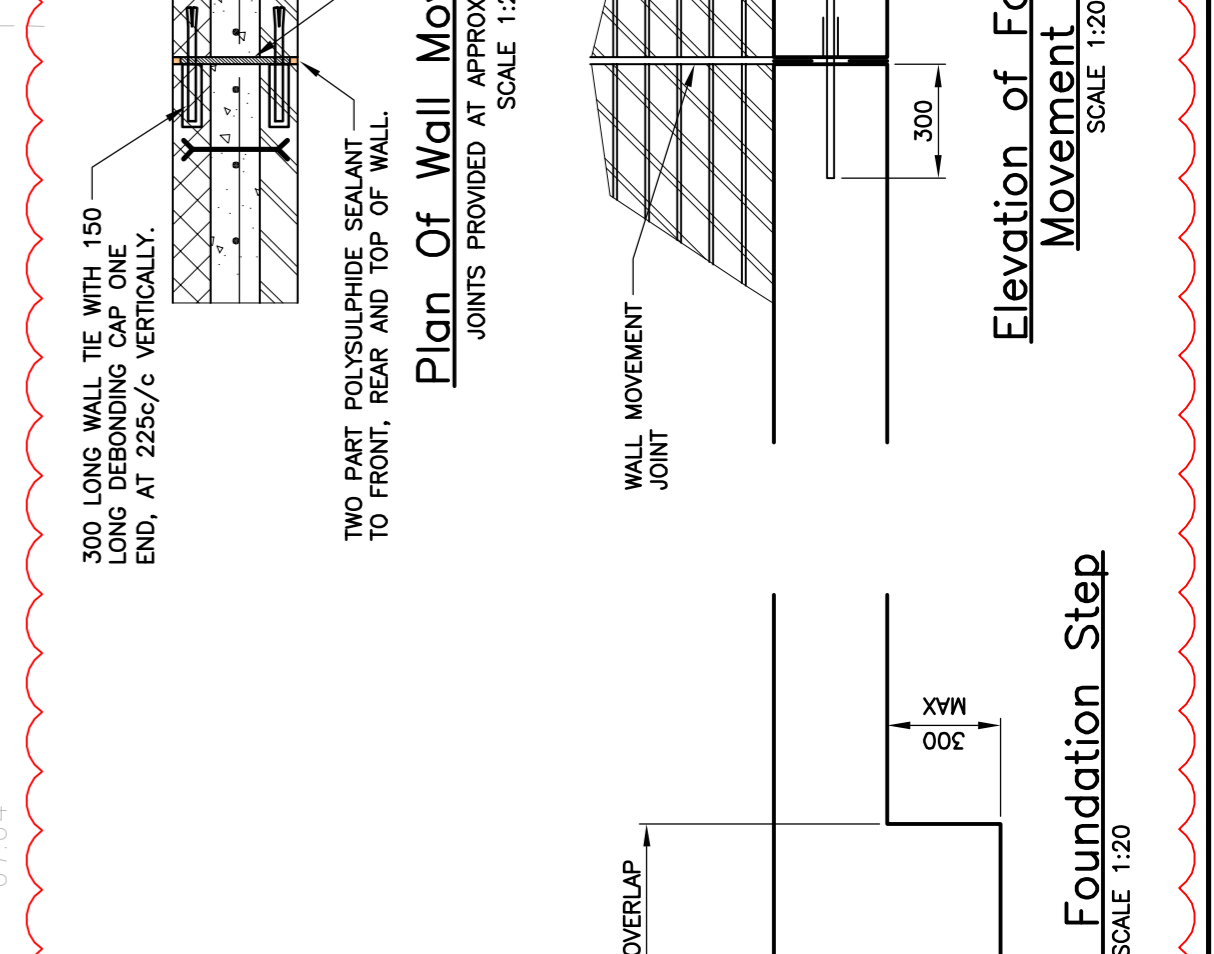
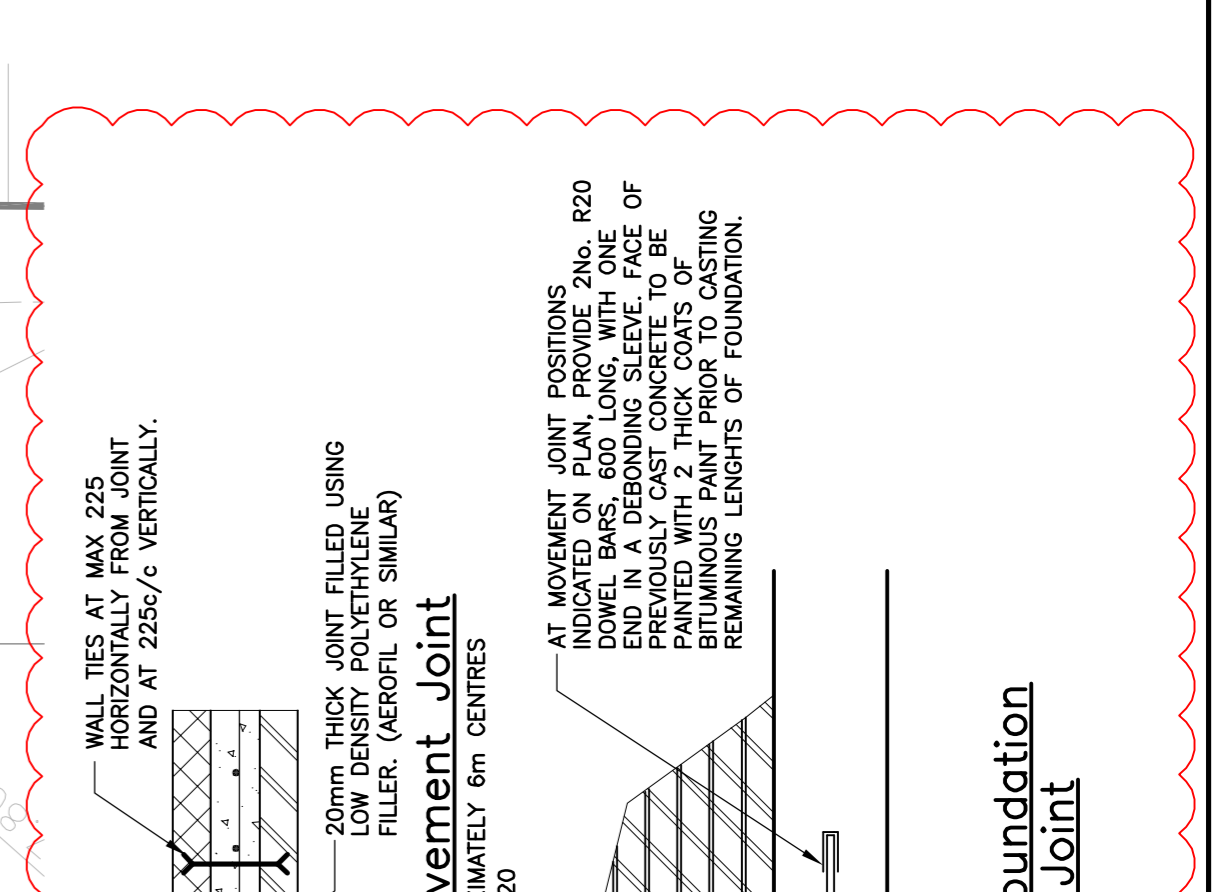
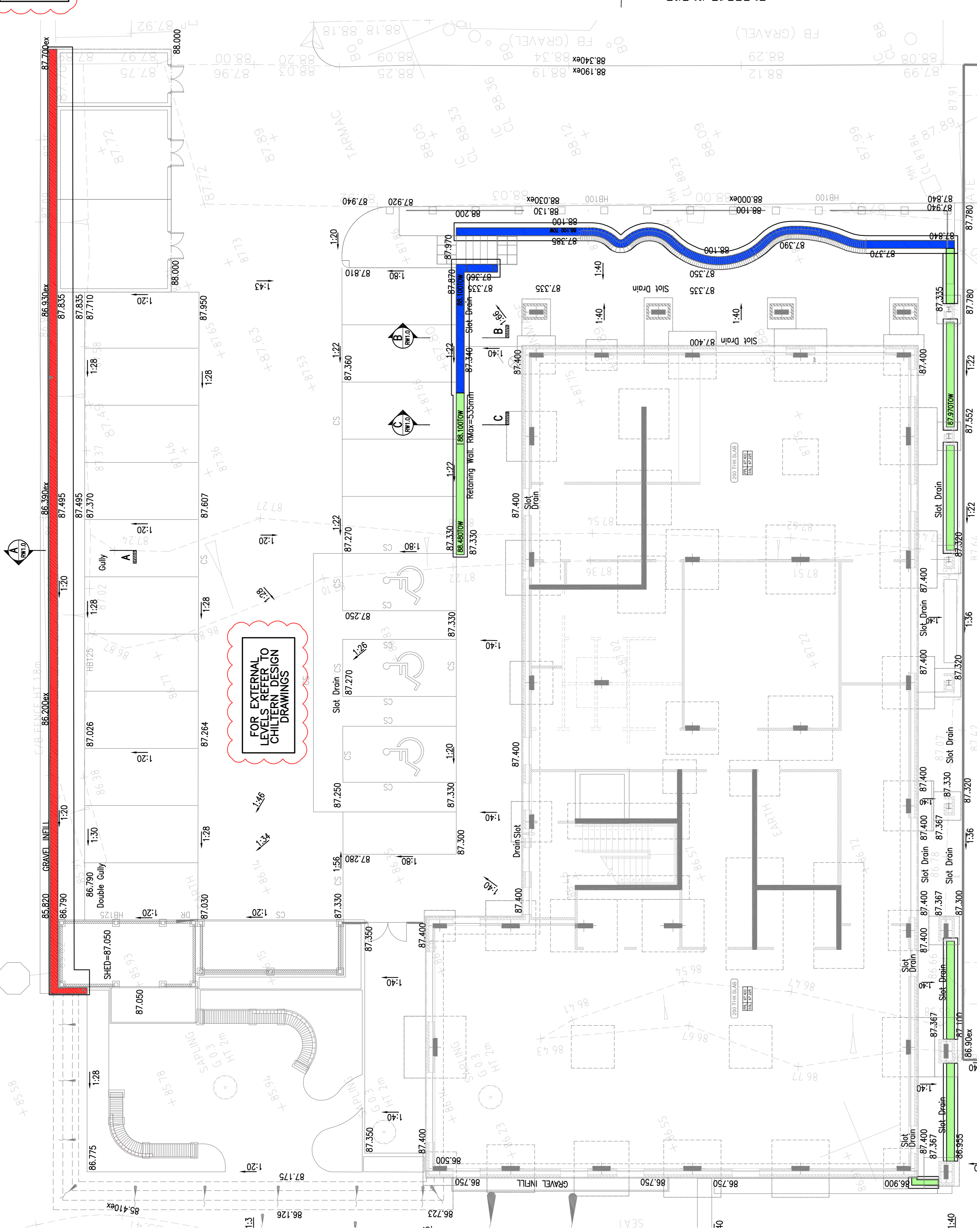
DRAWN BY: DD

CHECKED BY: DD

DRG NO: 7355/RW1.0

NO: C

Walter Associates Consulting Limited
13 Fairport Centre
Crane Farm Road
S51E 3JH
01268 530 500
walter-associates.co.uk



GENERAL NOTES

- THE CONTRACTOR IS RESPONSIBLE FOR ENSURING THAT ALL FOUNDATION WORKS AND ADJOINING STRUCTURES, WORKS AND SERVICES AT ALL STAGES OF CONSTRUCTION.
- ALL EXCAVATIONS SHALL BE PROTECTED AGAINST THE EFFECTS OF WATER SOFTENING AND DRIVING OUT AT ALL EXCAVATIONS AND PLACEMENT OF CONCRETE SHALL BE 4 HOURS.
- GENERALLY ALL SETTING OUT DIMENSIONS ARE TO CENTRE LINE OF OTHERS.
- REFER TO ARCHITECTS DRAWINGS FOR DETAILS OF FINISHES, DIMS AND DIMS.
- THE MAIN CONTRACTOR SHALL CHECK AND COMMERCEMENT OF THE WORKS.
- THE DRAWING AND DETAILS SHOWN ON THIS DRAWING RELATE TO STRUCTURAL REQUIREMENTS ONLY, RELEVANT PARTIES DO NOT CONTRAVENE OTHER NON-STRUCTURAL REQUIREMENTS, WHERE BROUGHT TO THE ATTENTION OF WALKER ASSOCIATES PRIOR TO CONSTRUCTION.

FOUNDATIONS

- THE FOUNDATION DESIGN SHOWN IS BASED ON UNALLOWABLE TOLERANCE OF PLUS OR MINUS 25mm ON THE POSITION OF THE FOUNDATION WORKS ON THE PLAN AND PLUS OR MINUS 10mm FOR THE MASONRY.
- ALL FOUNDATION EXCAVATIONS SHOULD BE TOLERANCE PRIOR TO CONCRETING.
- FOR DETAILS OF EXISTING SOIL INVESTIGATION REPORT 1673 DATED 14/05/2020, REFER TO THE ATTENTION OF WALKER ASSOCIATES PRIOR TO CONSTRUCTION.
- NEW TREE PLANTING TO BE EXCLUDED FROM WITHIN THE FOLLOWING DISTANCES: - LOW WATER DEMAND TREE - 0.5 OF MATURE HEIGHT DEMAND TREE - 0.75 OF MATURE HEIGHT DEMAND TREE - 1.25 OF MATURE HEIGHT.

CONCRETE

- ALL CONCRETE MATERIALS AND WORKMANSHIP TO BE IN ACCORDANCE WITH BS 8110.
- ALL CONCRETE IN FOUNDATIONS TO BE GRADE R40 MIX USING MINIMUM 325kg/m³ OF OPC TO SULPHATE CLASS DCL (AEC AC-15, D5-1).
- A MINIMUM OF 1 SET OF CONCRETE TEST SPECIMENS TO BE TAKEN FOR EACH DAY OF CONCRETING AT 7 AND 28 DAYS, AND 1 SPARE.

MASONRY

- MATERIALS, COMPONENTS AND WORKMANSHIP TO BE IN ACCORDANCE WITH BS 5628: PART 3:2005.
- FACING BRICKWORK TO ARCHITECTS DETAILS USING F22 BRICKS WITH A MINIMUM STRENGTH OF 20 N/mm².
- INTERNAL LOAD BEARING BLOCK WALLS TO BE MINIMUM 100 WIDE USING MINIMUM 7.3 N/mm² BLOCKS.
- INNER BLOCK LEAF OF CAVITY WALLS TO BE MINIMUM 100 WIDE USING MINIMUM 7.3 N/mm² BLOCKS.
- PARTY WALLS ARE TO BE OF CAVITY CONSTRUCTION WITH 100mm LEAVES OF 7.3 N/mm² BLOCKS.
- ANY MASONRY BELOW D.P.C. TO HAVE MINIMUM CLASS 1 SULPHATE RESISTANCE AND BE APPROVED BY THE MANUFACTURER USING O.P.C. SET IN 1:3 MORTAR.