

NOTES

- The contractor is responsible for checking dimensions, tolerances and references. Any discrepancy to be verified with the Architect before proceeding with the works.
- Where an item is covered by drawings to different scales the larger scale drawing is to be worked to.
- Do not scale drawing. Figured dimensions to be worked to in all cases.

The structural / civil engineering and other non-architectural information shown on this drawing is purely for co-ordination purposes only and in no way does it take on any responsibility or liability for M&A Ltd. For all detailed information relating to these items see the relevant consultants drawings and full design information.

Do not copy in full or in part without the expressed consent of MBA Ltd.

© MBA 2019
CDM Regulations 2015

ALL current drawings and specifications for the project must be read in conjunction with the Designer's Hazard and Environmental Assessment Record.

**WALL TYPE 1- REF.WT1 - TYPICAL EXTERNAL WALL
TARGET U VALUE 0.21W/M²**

1. 215x102.5x65mm brickwork see elevations and Material schedule for locations or specific brick types.
2. Stainless steel Type 1 wall ties to PD 6697 - 300mm long to suit 150mm cavity generally at 450mm vertical centres and 750mm horizontal centres.
3. full fill blown cavity wall insulation - Knauf Supafil 40 or equal cavity free from snots
4. 100mm loadbearing lightweight block work skin. Density 600-800kg/m³
5. Strength to S.E. design. thermal resistance no greater than 0.110- Tarmac Durox or equal
6. 12.5mm gypsum based sound bloc plasterboard lining on plaster dabs and 3mm skim coat finish or tape and joint to suit project Specification.

Item	Description	Proposed by volume	Approved/Partial consent	Quantity consent used	Remaining consent strength
M&A Ltd	1.000	1.000	1.000	1.000	0.000
Approved process by M&A Design Ltd	1.000	1.000	1.000	1.000	0.000
High modulus concrete for drainage	1.000	1.000	1.000	1.000	0.000
ACO Hexdrain channel	1.000	1.000	1.000	1.000	0.000
Integral outlet	1.000	1.000	1.000	1.000	0.000
Engineering grade brickwork	1.000	1.000	1.000	1.000	0.000
RIW 50x50 bead of sealant compound	1.000	1.000	1.000	1.000	0.000
RIW Flexiseal Pro	1.000	1.000	1.000	1.000	0.000
RIW Sheetseal 226x300mm	1.000	1.000	1.000	1.000	0.000

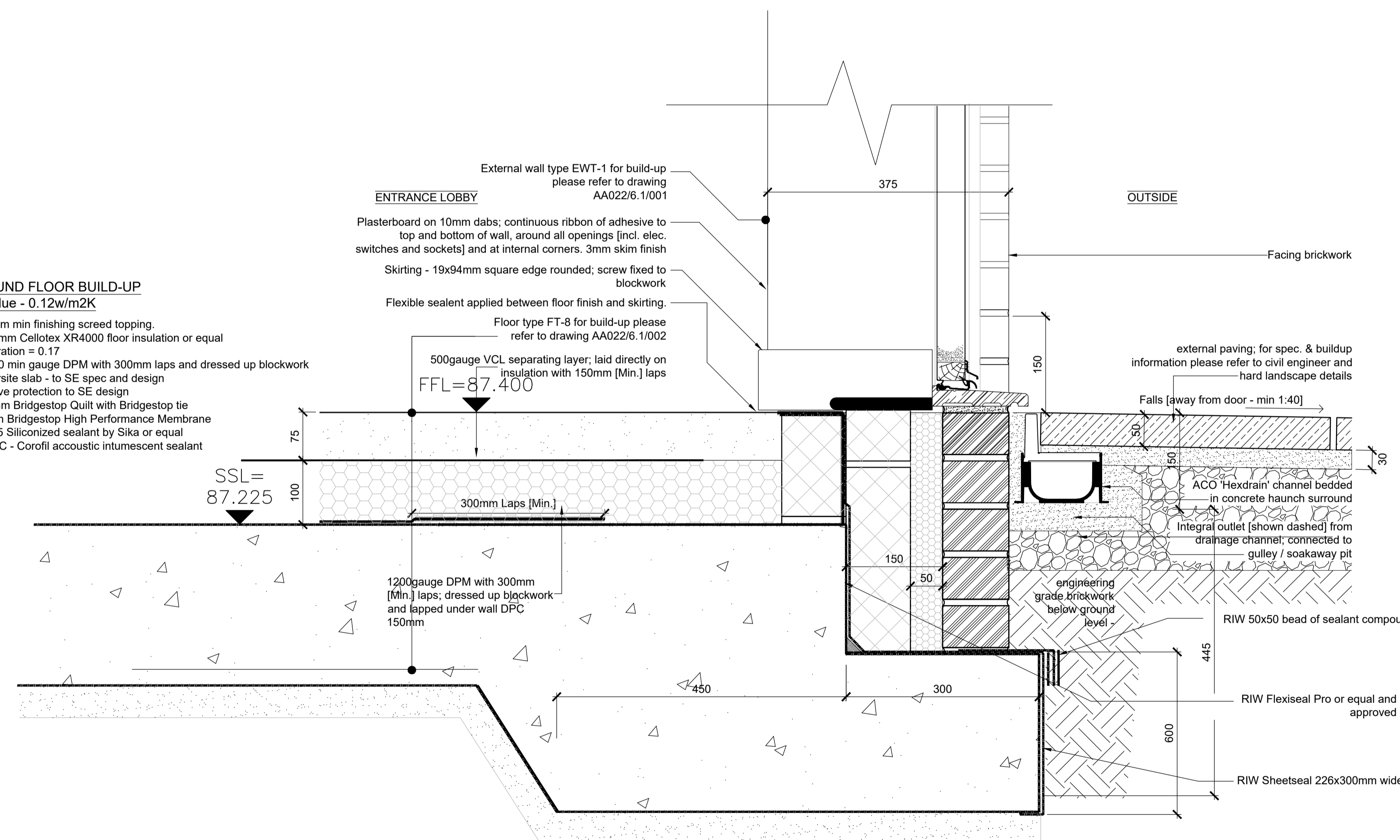
Brick/block type	Use/minimum standard of brick or block
	Walls up to DPC
Clay bricks	FL, FN, ML, MN ⁽¹⁾
Calcium silicate bricks	Class 3 ⁽²⁾
Concrete bricks	Min strength 20N/mm ² ⁽³⁾
Block work	Min strength 7N/mm ² and density greater than 1500kg/m ³ ⁽⁴⁾

Notes: ⁽¹⁾ If the site is wet or saturated at ground level use FL or FN bricks only.
⁽²⁾ Denotes a minimum standard - higher classifications may be used.
⁽³⁾ For Class 1 and Class 2 sulphates, check with manufacturers to confirm suitability of brick; for Class 3 sulphates, use engineering quality concrete bricks.
⁽⁴⁾ Autoclaved aerated blocks with independent appropriate third party certification are acceptable.

JUNCTIONS WITH STRUCTURESEAL

- RIW Sheetseal 226 to be overlapped by 150mm onto the applied RIW Structureseal.
- Seal together using 50 x 5mm bead of RIW Sealing Compound, in centre of lap.
- Apply remaining RIW Sheetseal 226, as required.

- GROUND FLOOR BUILD-UP
U- Value - 0.12w/m²K**
- 1 - 75mm min finishing screed topping.
 - 2 - 100mm Cellotex XR4000 floor insulation or equal
 - 3 - PA ration = 0.17
 - 4 - 1200 min gauge DPM with 300mm laps and dressed up blockwork
 - 5 - oversite slab - to SE spec and design
 - 6 - heave protection to SE design
 - 8 - 10mm Bridgestop Quilt with Bridgestop tie
 - 9 - 3mm Bridgestop High Performance Membrane
 - 10 - 195 Siliconized sealant by Sika or equal
 - 11 - PFC - Corofill acoustic intumescent sealant



REV:	DESCRIPTION:	BY:	DATE:
			
STATUS: Contractor/Tender set			
			
CLIENT: Taylor French Taylor French Barns Shipston Winslow - MK18 3JL			
ARCHITECT: Mark Bell Architects Ltd The Braid, Little Street Sulgrave, Oxfordshire OX17 2SG Tel 07788251765 W-markbellarchitects.com			
SITE: ELMSBROOK NEIGHBOURHOOD CENTRE, NW BICESTER			
TITLE: SUPERSTRUCTURE DETAILS - sheet 9			
SCALE AT A1:	DATE:	DRAWN:	CHECKED:
1:5/1:10	08/04/20	MDB	MB
PROJECT NO:	DRAWING NO:	REVISION:	
AA048	AA048/6.1/009	C1	