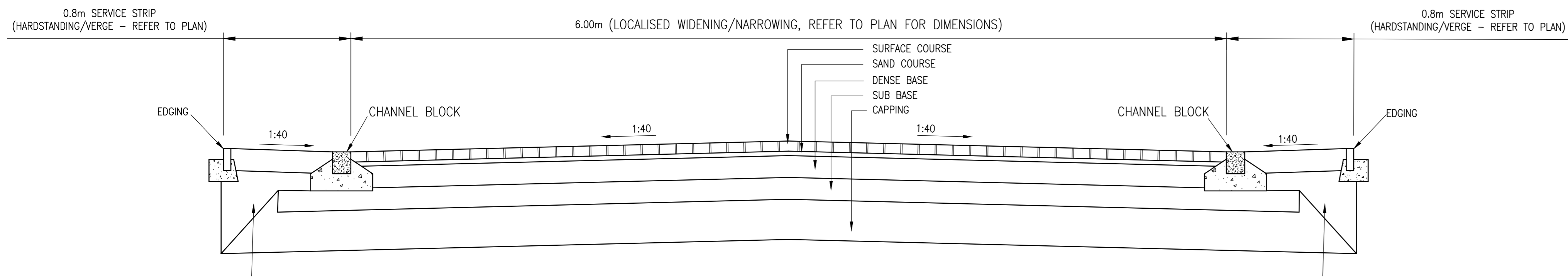
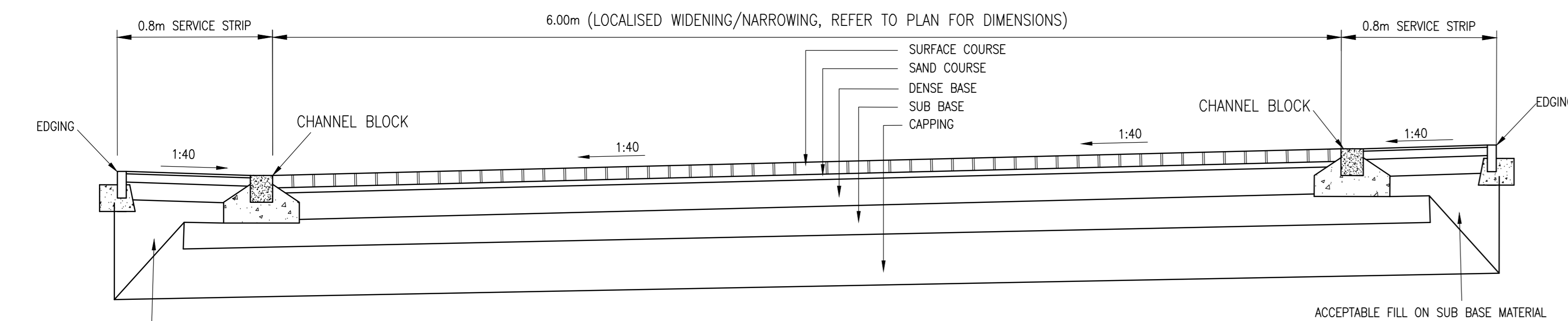


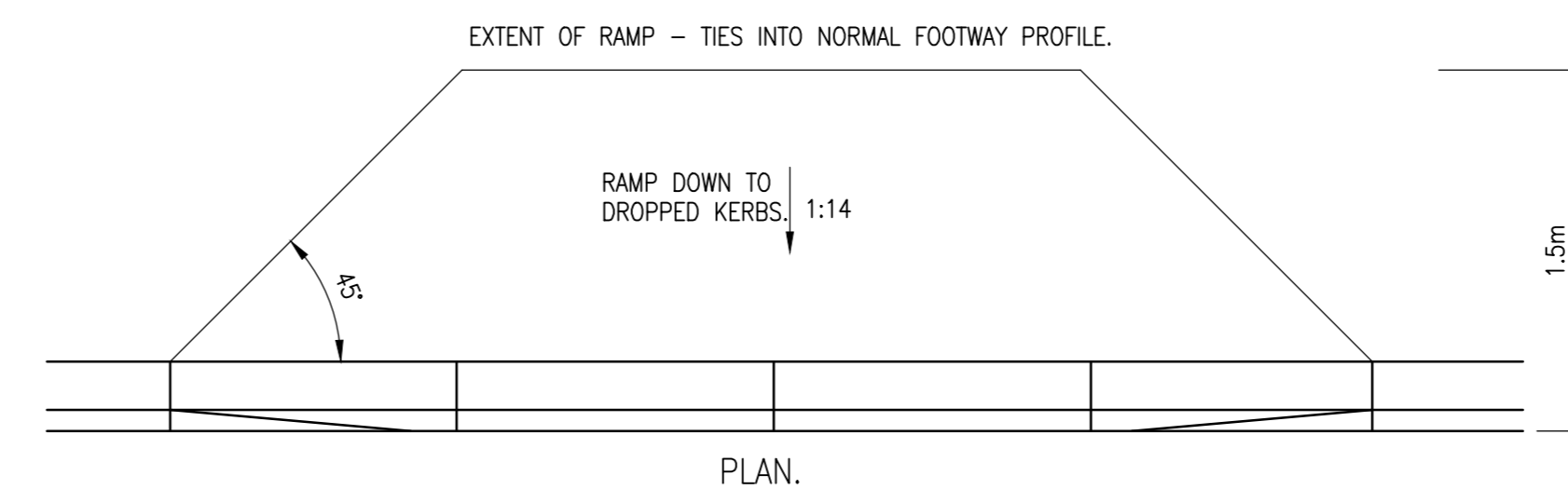
TYPICAL BITUMINOUS CARRIAGEWAY SECTION (ROADS DE1 & DE2)
SCALE 1:20



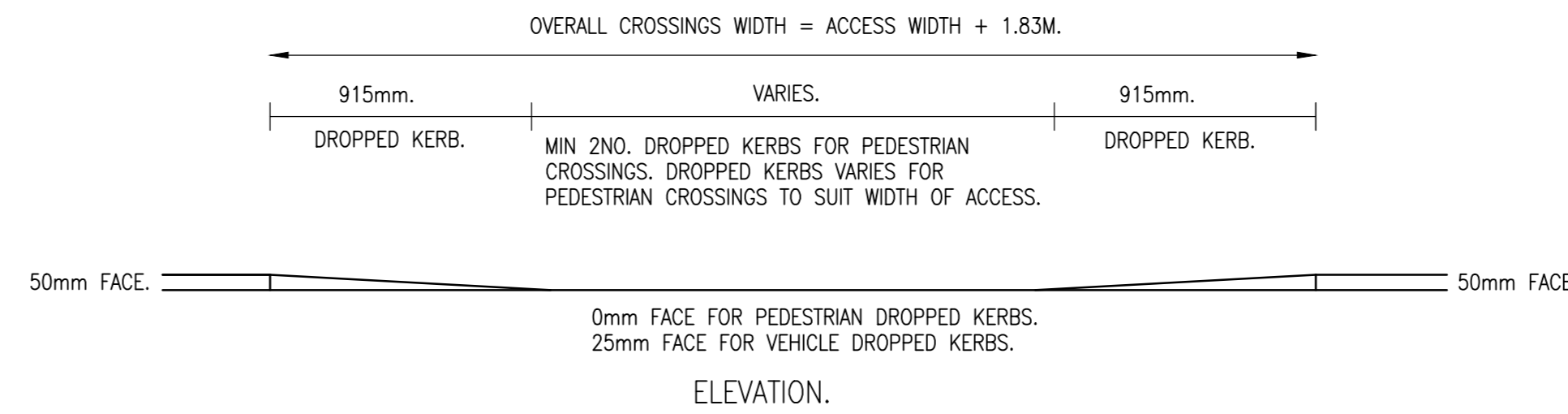
TYPICAL BLOCK PAVED CARRIAGEWAY SECTION (FEATURE SQUARES) (ROADS DE1 & DE2)
SCALE 1:20



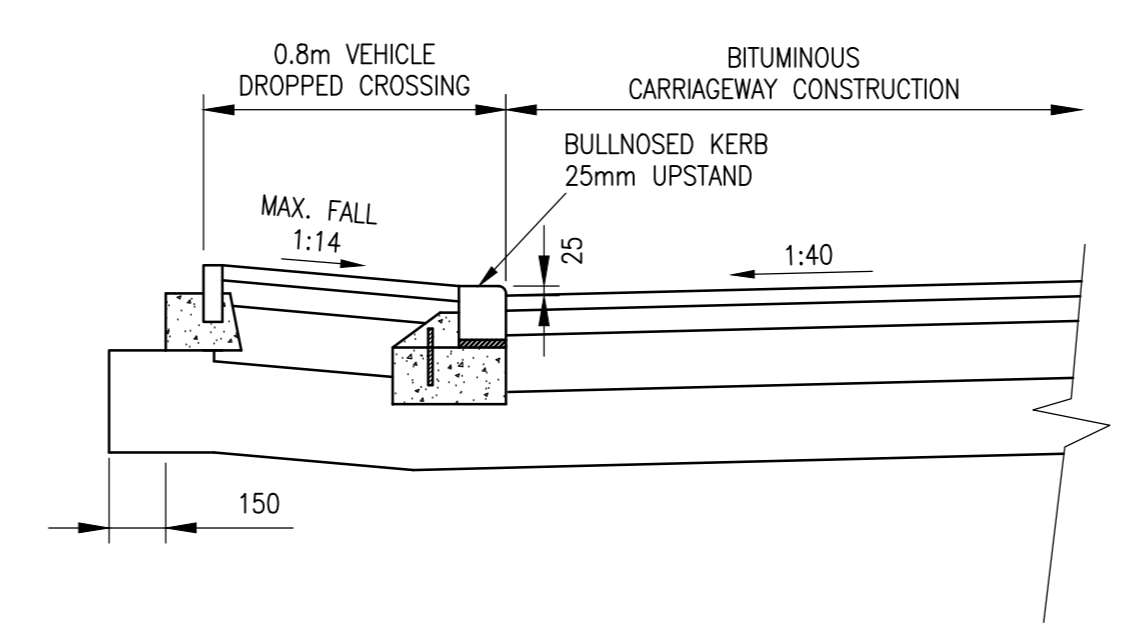
TYPICAL BLOCK PAVED CARRIAGEWAY SECTION (ROADS DE3 & DE4)
SCALE 1:20



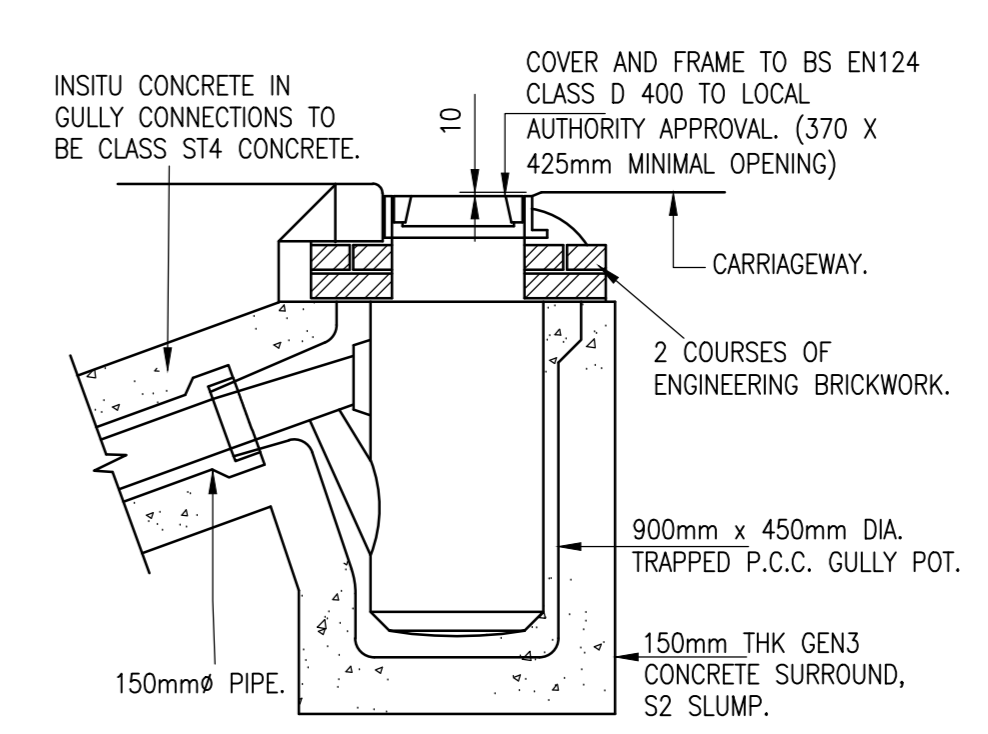
PLAN.



PEDESTRIAN / VEHICLE DROPPED CROSSING DETAILS
NTS



BITUMINOUS VEHICLE DROPPED CROSSING CONSTRUCTION
SCALE 1:20



TYPICAL GULLY DETAIL
SCALE 1:20

CARRIAGEWAY SPECIFICATION

	BITUMINOUS ROAD	BLOCK PAVED ROAD
SURFACE COURSE	40mm THICKNESS FRA 33/14 F SURF DES 40/60 WTR 1 + PCC 14/20 MIN PSV 55 EN 13106-4	80mm THICK PAVER (LAD AT 45° HERRINGBONE PATTERN) JOINING IN ACCORDANCE WITH BS 7533-3 F ₁
BINDER COURSE	80mm AC 20 DENSE 40/60 PEN TO CL 908 OF THE SPECIFICATION FOR HIGHWAY WORKS	30mm SAND TO BS EN 12620 Q ₄₅ 0/4 F ₁₃
BASE COURSE	150mm AC 32 DENSE 40/60 PEN TO CL 903	130mm AC 32 DENSE 100 PEN
SUB-BASE / CAPPING	SUB-BASE - TYPE 1 MATERIAL TO CLAUSE 803 (THICKNESS SUBJECT TO INSITU CBR RESULTS - SEE FIGURE 1) CAPPING - 672 MATERIAL (THICKNESS SUBJECT TO INSITU CBR RESULTS - SEE FIGURE 1)	

FOOTWAY / VEHICLE CROSSING SPECIFICATION

	BITUMINOUS FOOTWAY	BITUMINOUS VEHICLE CROSSING	GRASS VERGE	BLOCK PAVED FOOTWAY / SERVICE STRIP / VEHICLE CROSSING
SURFACE COURSE	20mm AC 6 DENSE 40/60 PEN	3 NOM. SIZE FINE GRADED SURFACE COURSE OR 6 NOM. SIZE MEDIUM GRADED SURFACE COURSE BOTH THE ABOVE LAD AND COMPACTED TO CL 901 (20mm THICK)	150mm (MIN) CLASS SA OR 50 TOPSOIL TO SHM TABLE 6/1 AND LOW MAINTENANCE GRASS SEED	80mm THICK BLOCK PAVING, BLOCKS TO BE MARSHALLS "KEYBLOCK" OR (SIMILAR APPROVED), LAD IN 45° HERRINGBONE COLOUR OF BLOCKS TO BE AGREED WITH HIGHWAY AUTHORITY AND ENGINEER.
BINDER COURSE	50mm AC 20 DENSE 40/60 PEN	20 NOM. SIZE OPEN TEXTURED BINDER COURSE MACADAM OR 20 NOM. SIZE DENSE BITUMEN MACADAM BOTH LAD AND COMPACTED TO CL 901 (50mm THICK)	N/A	SECONDARY - 50mm GRI TO OCC SPEC
DENSE BASE	N/A (UNLESS IMMEDIATELY ADJACENT TO CARRIAGEWAY THEN 150mm LEAN MIX CONCRETE)	150mm LEAN MIX CONCRETE	N/A	150mm LEAN MIX CONCRETE
SUB-BASE	225mm THICK TYPE 1 SUB-BASE TO DIP SPECIFICATION CL 803 FOR ACCESS ROADS 3, 4 & 5. 180mm THICK TYPE 1 SUB-BASE TO DIP SPECIFICATION CL 803 ELSEWHERE, (UNLESS IMMEDIATELY ADJACENT TO CARRIAGEWAY THEN 75mm TYPE 1 OR 150mm TYPE 1 WHERE CBRs ARE LESS THAN 5%)	150mm TYPE 1 SUB-BASE TO DIP SPECIFICATION CL 803	N/A	CBR >5% 150mm TYPE 1 CBR 3.5-5% SPRING/PRIMARY 225mm TYPE 1 - SECONDARY 250mm TYPE 1 CBR 2-3.5% SPRING/PRIMARY 300mm TYPE 1 - SECONDARY 350mm TYPE 1 CBR <2% REFER BACK TO ENGINEER (UNLESS IMMEDIATELY ADJACENT TO CARRIAGEWAY THEN 75mm TYPE 1 OR 150mm TYPE 1 WHERE CBRs ARE LESS THAN 5% OR AT VEHICLE CROSSINGS)

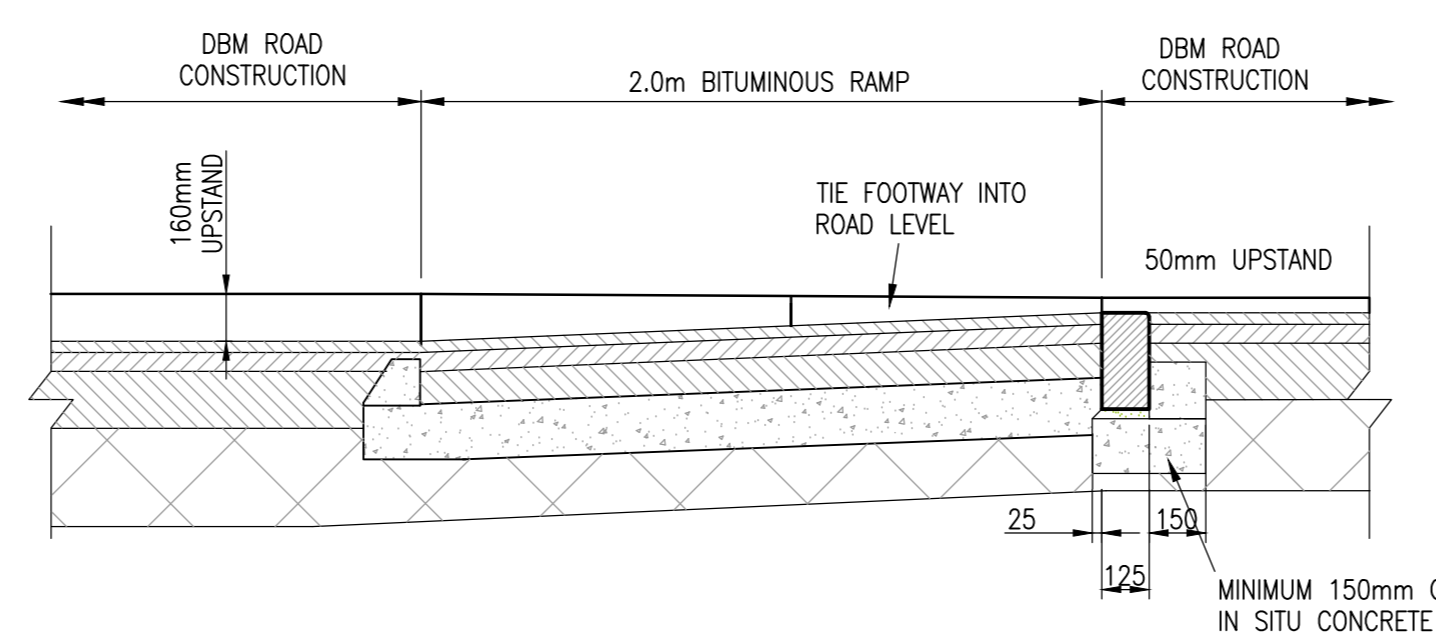
FIGURE 1 - SUB-BASE & CAPPING THICKNESSES

C.B.R. VALUE	OPTION A	OPTION B
<2%	CAPPING TO TYPE 1 TO CL 613.	CAPPING TO TYPE 1 TO CL 613.
2%	600mm	600mm
3%	450mm	450mm
4%	300mm	300mm
5%-15%	150mm	225mm*
>15%	150mm*	150mm*

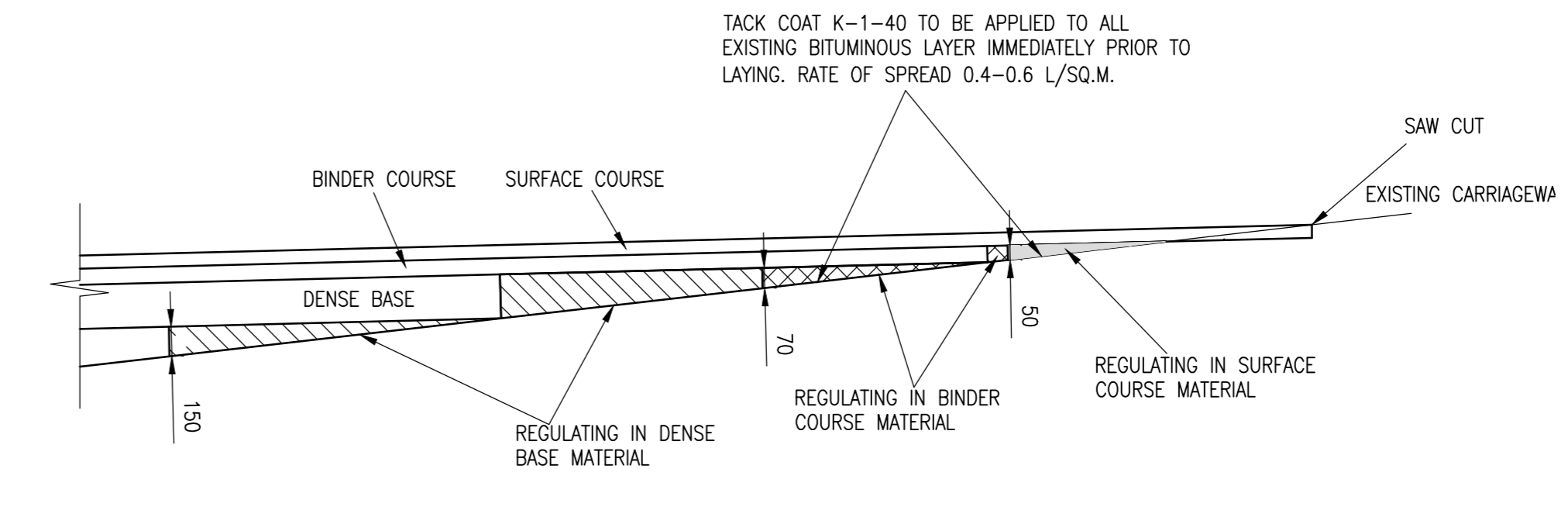
SIEVE SIZE	PERCENTAGE PASSING
40	100
31.5	98-100
20	90-99
10	25-70
4	0-15
2.8	0-15
0.063	0-5

SIEVE SIZE	PERCENTAGE PASSING
14	100
10	98-100
6.3	80-99
2	0-20
1	0-5
0.063	0-2

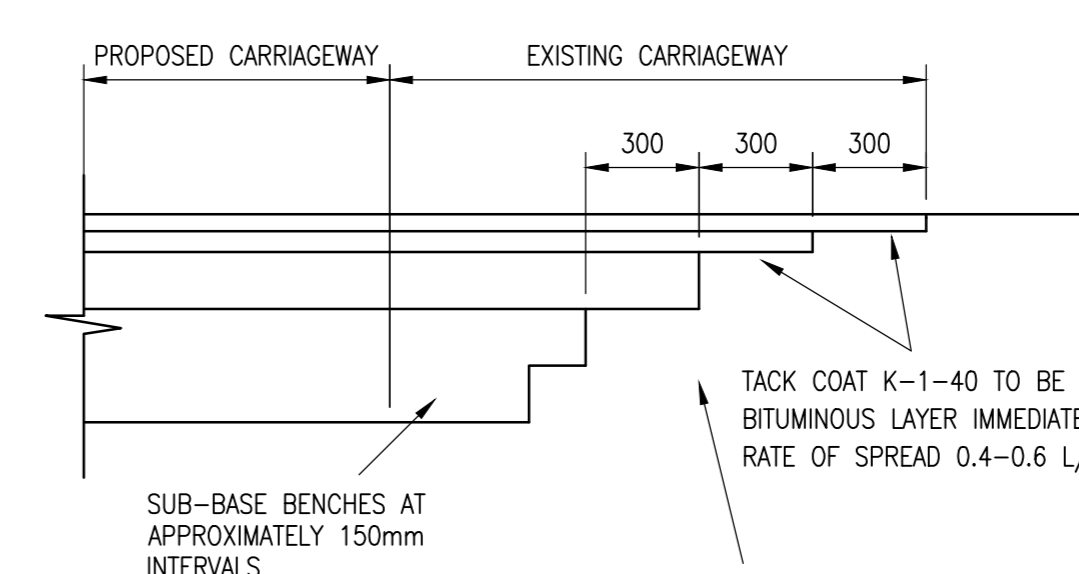
NOTE: * SUB-BASE TO BE DEEPENED TO PROVIDE A MINIMUM OF 450mm OVERALL CARRIAGEWAY CONSTRUCTION DEPTH. MATERIALS WITHIN 450mm OF THE FINISHED ROAD SURFACE MUST NOT BE FROST SUSCEPTIBLE.



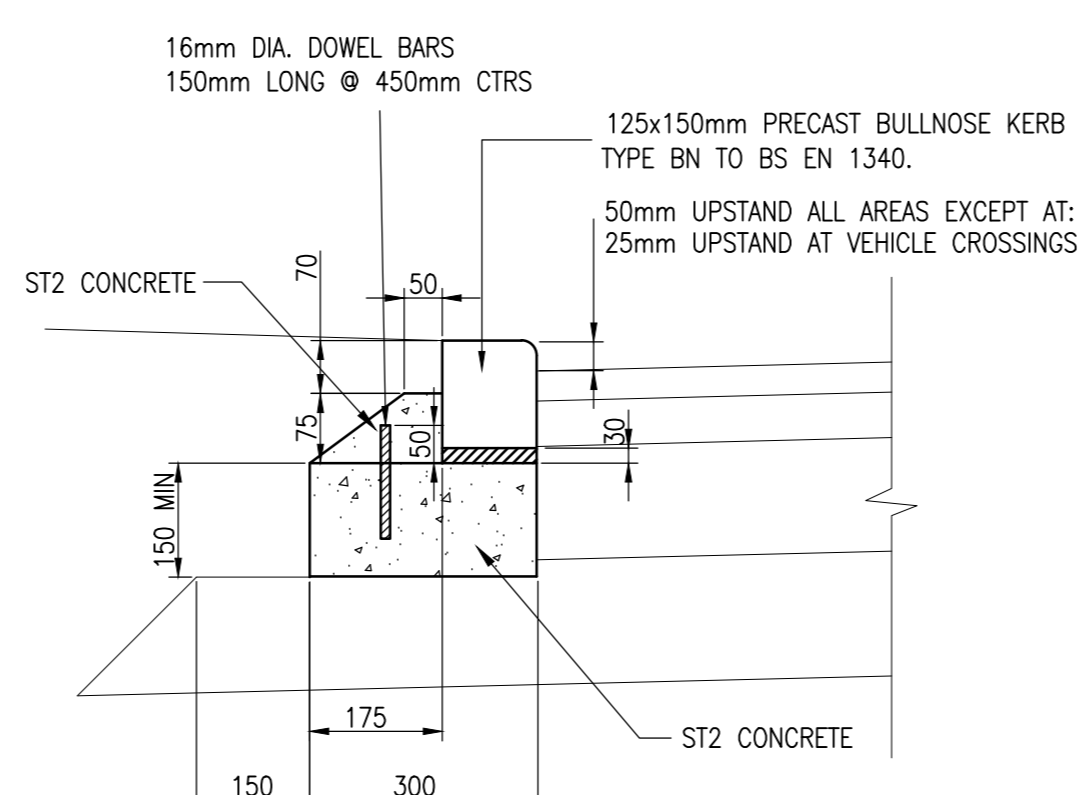
TYPICAL SECTION THROUGH BITUMINOUS RAMP
SCALE 1:20



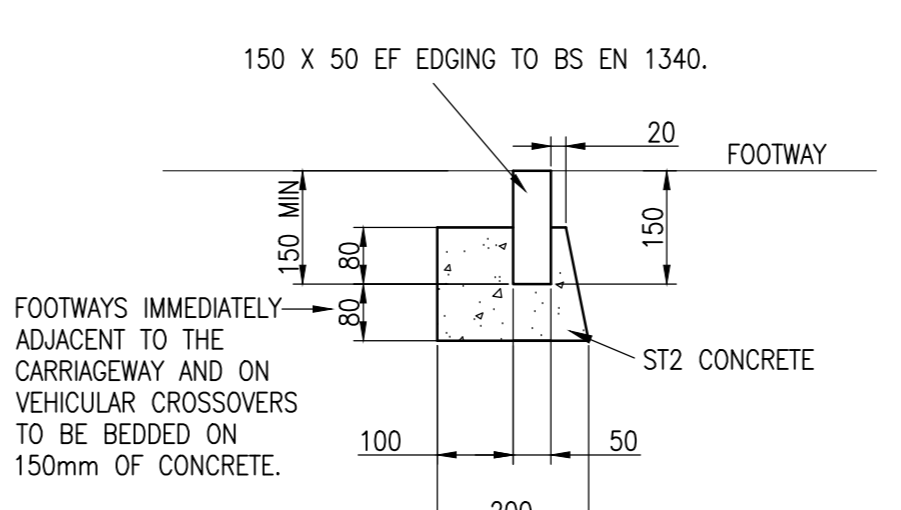
CARRIAGEWAY REGULATING DETAIL
SCALE 1:20



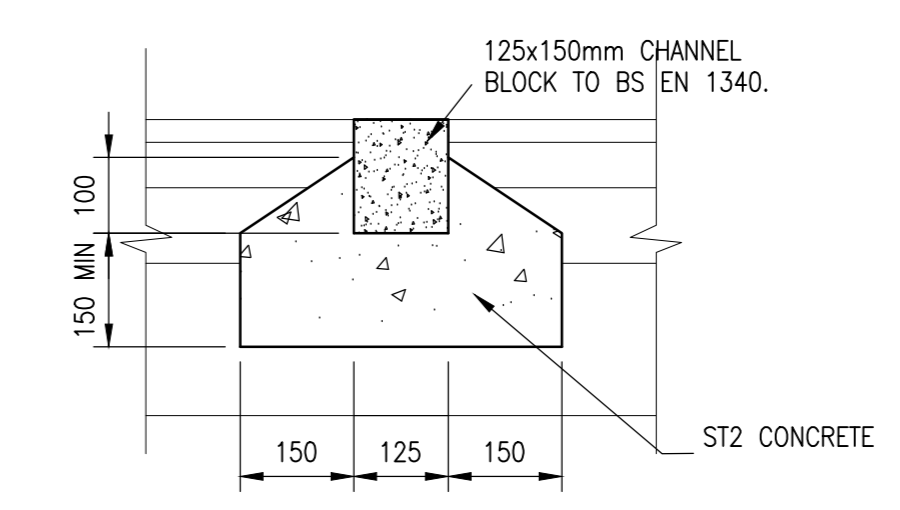
CARRIAGEWAY TIE-IN DETAIL
SCALE 1:20



BULLNOSE DROPPED KERB
SCALE 1:10



FOOTWAY/VERGE EDGING DETAIL
SCALE 1:10



CHANNEL BLOCKS
SCALE 1:10

- GENERAL NOTES.**
- DO NOT SCALE THIS DRAWING.
 - THIS DRAWING IS TO BE READ IN CONJUNCTION WITH ALL RELEVANT ARCHITECT'S, ENGINEER'S AND SPECIALIST DRAWINGS AND SPECIFICATIONS.
 - ALL DIMENSIONS ARE IN MILLIMETRES UNLESS NOTED OTHERWISE. ALL LEVELS ARE IN METRES UNLESS NOTED OTHERWISE.
 - ANY DISCREPANCIES NOTED ON SITE ARE TO BE REPORTED TO THE ENGINEER IMMEDIATELY.
 - THE CONTRACTOR IS RESPONSIBLE FOR ENSURING THAT ALL WORKS ARE TO THE SATISFACTION OF THE ENGINEER, AND SHALL BE DEEMED TO HAVE INCLUDED IN HIS RATES FOR ANY NECESSARY TESTING.
 - BITUMINOUS SPRAY TO BE APPLIED TO ALL EXISTING SURFACES WHERE DIRECTLY OVERLAD BY BITUMINOUS MATERIAL. RATE OF SPREAD TO BE 0.4-0.6 LITRES PER SQUARE METRE.
 - ALL WORKS SHALL BE CARRIED OUT IN ACCORDANCE WITH THE OXFORDSHIRE COUNTY COUNCIL DESIGN GUIDE.
 - CLAUSES REFER TO THE SPECIFICATION FOR HIGHWAY WORKS, UNLESS OTHERWISE STATED.
 - BLOCK PAVING TO BE LAID IN 90 DEGREE HERRINGBONE PATTERN.
 - OXFORDSHIRE COUNTY COUNCIL HAVE OBSERVED PROBLEMS WITH THE PERFORMANCE OF TEMPORARY BITUMINOUS RUNNING COURSES THAT ARE SUBJECTED TO HEAVY CONSTRUCTION RELATED LOADING. THE CONDITION/PERFORMANCE OF THE BITUMINOUS RUNNING COURSE WILL BE MONITORED DURING THE CONSTRUCTION PERIOD. IF DAMAGE, SUBSIDIENCE OR GENERAL DEGRADATION OCCURS, REPAIRS OR TOTAL REMOVAL MAY BE REQUESTED BY THE COUNCIL'S INSPECTOR.

A	DETAILS UPDATED FOLLOWING CHANGES TO ROAD DESIGN	JP	KA	01/04/18
REV	AMENDMENTS	DMH	CHK	DATE
PROJECT: LONGFORD PARK BODICOTE BANBURY				
DRAWING TITLE: PARCEL D & E HIGHWAY CONSTRUCTION DETAILS				
CLIENT: BOVIS HOMES				
DRAWING NUMBER: 20488_02_080_302				
REVISION: A	SHEET SIZE: A1	SCALE: AS SHOWN		
DRAWN BY: DMH	CHECKED BY: KA	DATE: 26.08.16		
STATUS: FOR INFORMATION / APPROVAL				
MEC		Wellington House, Lakeside Road, Boreham, Essex, SSO 1 7JG T: 01300 848 700 F: 01300 848 114 www.mec.co.uk		
ORDNANCE SURVEY © CROWN COPYRIGHT 2014. ALL RIGHTS RESERVED. LICENSE NUMBER 100029324.				