

26 April 2017

Our ref: 123280/JDT

Mr S Wright
Pye Homes Limited
Langford Locks
Kidlington
Oxfordshire
OX5 1HZ

Dear Mr Wright

SHIPTON ROAD, WOODSTOCK

Introduction

AA Environmental Limited (AAe) has been commissioned by Pye Homes Limited to produce an Ecological Enhancement Plan (EMP) for the temporary haul road for the site at Shipton Road, Woodstock. This report will provide the information to assist with discharging Condition 6 attached to planning (Cherwell District Council ref: 15/00394/F), which states:

Full details of the remediation and reinstatement works which shall include replanting of the gaps where hedgerow/trees are to be removed shall be submitted within 18 months of the date of this permission to be approved in writing by the Local Planning Authority prior to those remediation works commencing. The approved scheme shall be implemented within 6 months of the cessation of the use of the haul road.

Environmental Information

The majority of the area for the haul road was dominated by an arable field and consequently was of overall low ecological value. However, two sections of hedgerow were removed in order to accommodate the haul road. The hedgerow habitat was considered to be of intermediate to high ecological value, due to its species diversity and forming part of a connective green corridor.

Prescriptions

The sections of lost hedgerows will be replaced within 6 months after the haul road closes, or at the first available planting season. The following species will be used for the replanting: hawthorn (*Crataegus monogyna*), hazel (*Corylus avellana*), dogwood (*Cornus sanguinea*), wild privet (*Ligustrum vulgare*), spindle (*Euonymus europaeus*), crab apple (*Malus sylvestris*) and buckthorn (*Rhamnus cathartica*). Two oak (*Quercus robur*) sapling trees will also be planted which will be allowed to grow into mature standards. The indicative planting schedule is shown on the attached plan (Figure 1).

Responsibilities

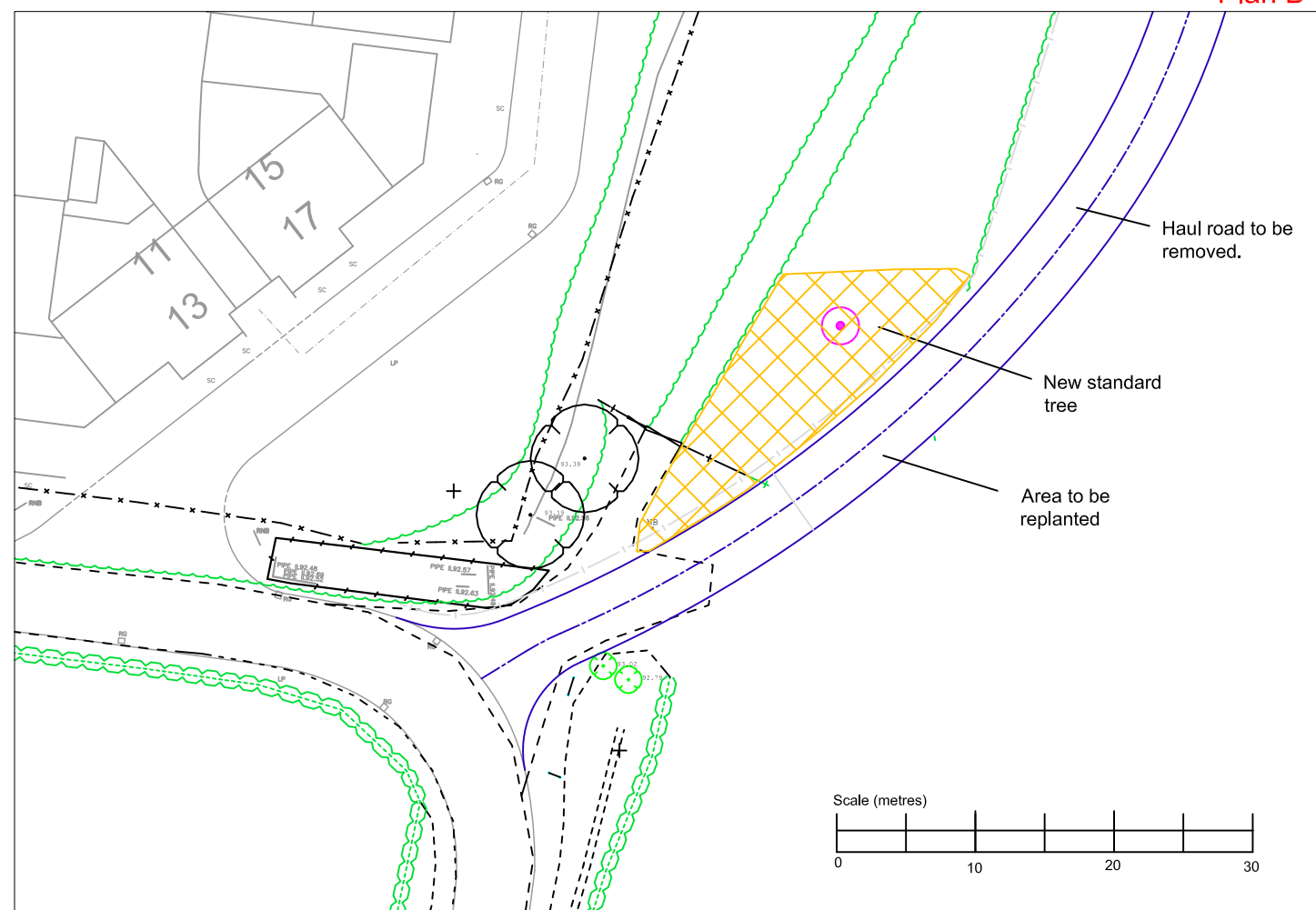
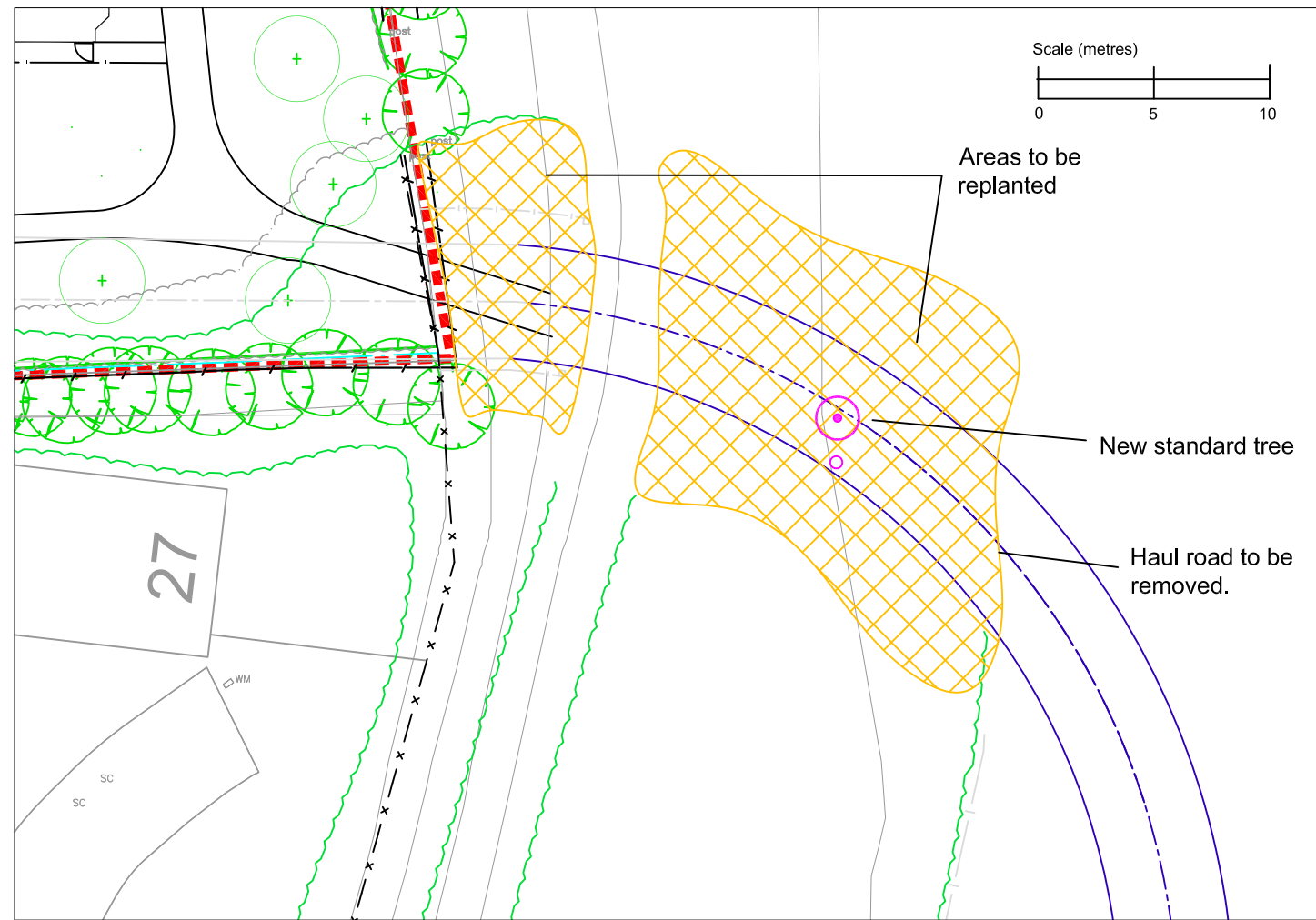
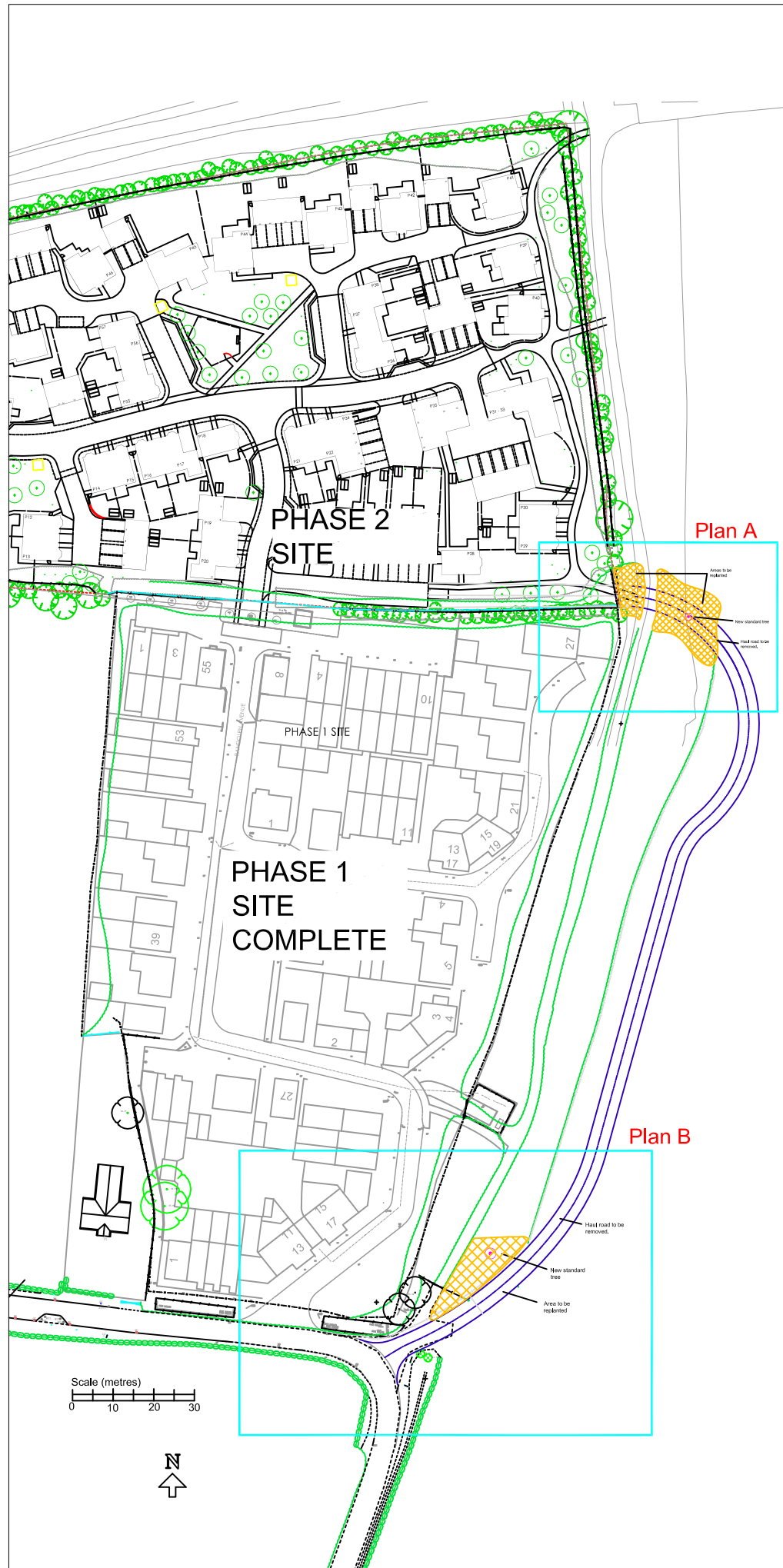
The management of the new planting will fall back to the responsibility of the original landowners/tenants although any failed planting within 5 years will be replaced by Pye Homes.

I trust this is of interest to you and provides the Council with enough information to discharge the condition, but let me know if further clarification is required.



Yours sincerely
Julian Thornber
BSc. (Hons) MCIEEM

Encl.: Figure 1: *Haul Road Planting Plan (AAe) – Rev A*



Plan A

Plan B

KEY

- Site Boundary (Indicative)
- Existing Vegetation
- Haul Road to be Removed
- Area to be Replanted
- Proposed Standard Tree

Planting Schedule

REPLACEMENT HEDGEROW

% Density	Species	Height	
25	<i>Crataegus monogyna</i>	60-80cm	3/m ²
25	<i>Corylus avellana</i>	60-80cm	3/m ²
15	<i>Cornus sanguinea</i>	60-80cm	3/m ²
15	<i>Rhamnus cathartica</i>	60-80cm	3/m ²
10	<i>Euonymus europaeus</i>	60-80cm	3/m ²
5	<i>Malus sylvestris</i>	60-80cm	3/m ²
5	<i>Ligustrum vulgare</i>	60-80cm	3/m ²

PROPOSED STANDARD TREES

No.	Species	Height	Girth
2	<i>Quercus robur</i>	3.5-4.0m	12-14cm

PLANTING NOTES

All plants to be supplied in accordance with the HTA 'National Plant Specification' and from a HTA certified nursery. All species to be planted in accordance with BS 3936. Delivery and handling of all plant material to be in accordance with CPSE 'Handling and Establishment of Landscape Plants 1996'. All plants to be planted in a random fashion avoiding formal regimented lines at densities indicated in the schedule, unless otherwise specified. All plants shall be watered in to field capacity immediately after planting and mulched with 50mm depth of medium grade crushed mulch. Replacement of failed plants will be completed for a 5 year period.

A	Client edits	JDT	25.04.17
Rev.	Details	Drawn Chkd.	Date

Project
123280
Shipton Road
Woodstock

Title
Haul Road Planting Plan

AA Environmental Ltd
Units 4-8
Cholswell Court
Shipton Abingdon
Oxon OX13 6HX
T: (01235) 536042
F: (01235) 523849
info@aee-llp.com
www.aee-llp.com

Scale	Date	25.04.17	Drg. No.	Rev.
As shown	Drawn	JDT	Chkd.	ARB
			Figure 1	