

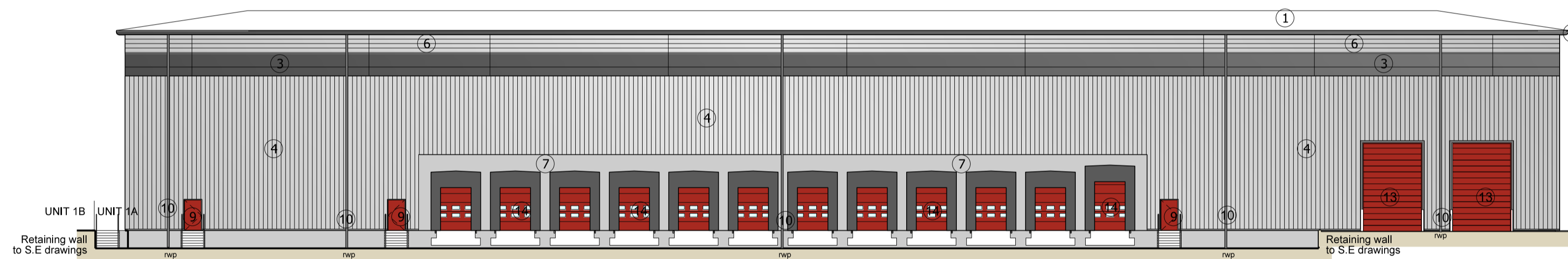
Subject to Statutory Approvals.

Subject to design development

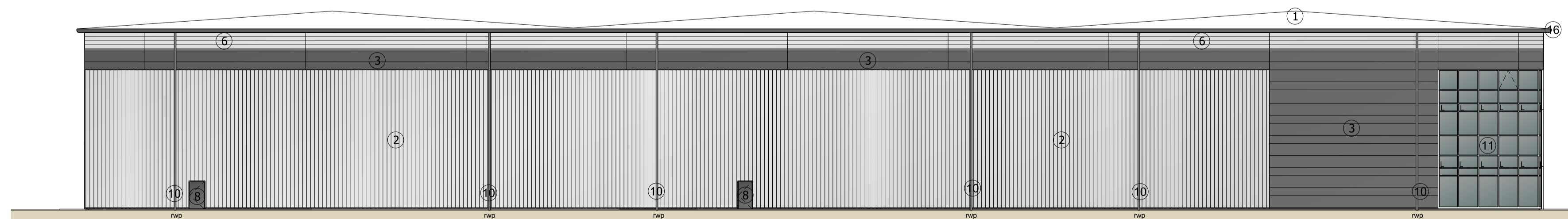
01 SOUTH-WEST ELEVATION
UNIT 1A



02 NORTH-WEST ELEVATION
UNIT 1A



03 SOUTH-EAST ELEVATION
UNIT 1A



04 NORTH-EAST ELEVATION
UNIT 1A

KEY

- ① Euroclad Elite 3 Built up roof system, Colour: Gooswing Grey
- ② Vertical half-round built-up cladding system - Corus Colorcoat Prisma - Sirius
- ③ Micro-lined Trimoterm facade profile system Colorcoat Prisma - Zeus
- ④ Vertical trapezoidal built-up cladding system - Corus Colorcoat Prisma - Sirius
- ⑤ Vertical half-round built-up cladding system - Corus Colorcoat Prisma - Zeus
- ⑥ Horizontal trapezoidal built-up cladding system - Corus Colorcoat Prisma - Sirius
- ⑦ Prowall precast concrete sandwich wall panel
- ⑧ Steel fire escape door, colour RAL 7016
- ⑨ Steel fire escape door, colour RAL 3000
- ⑩ Rainwater pipe, colour RAL 7016
- ⑪ PPC Aluminium double glazed curtain walling, colour RAL 7016
- ⑫ PPC Aluminium double glazed windows, colour RAL 7016
- ⑬ Loading door, colour RAL 3000
- ⑭ Dock level loading doors, colour RAL 3000 incorporating standard dock shelter
- ⑮ Proposed signage zone
- ⑯ Eaves and verge flashings, colour RAL 7016
- ⑰ Glass canopy
- ⑱ Louvres - colour to match cladding (to M&E consultant specification)
- L Look-a-like panels - obscured glass

Rev	Description	Chkd	Date
-----	-------------	------	------

Peer House
8 -14 Verulam Street
London WC1X 8LZ

tel +44(0)20 7400 2120

enquiries@cornisharchitects.com
www.cornisharchitects.com

cornisharchitects

Project
**LINK 9 - SKIMMINGDISH LANE
BICESTER
PLOT 1**

Orig Title
UNIT 1A ELEVATIONS

Status
PLANNING



Scale
1:250 @ A1

Date
29/03/2018

Orig No
17007 / TP / 1009

Rev
-