

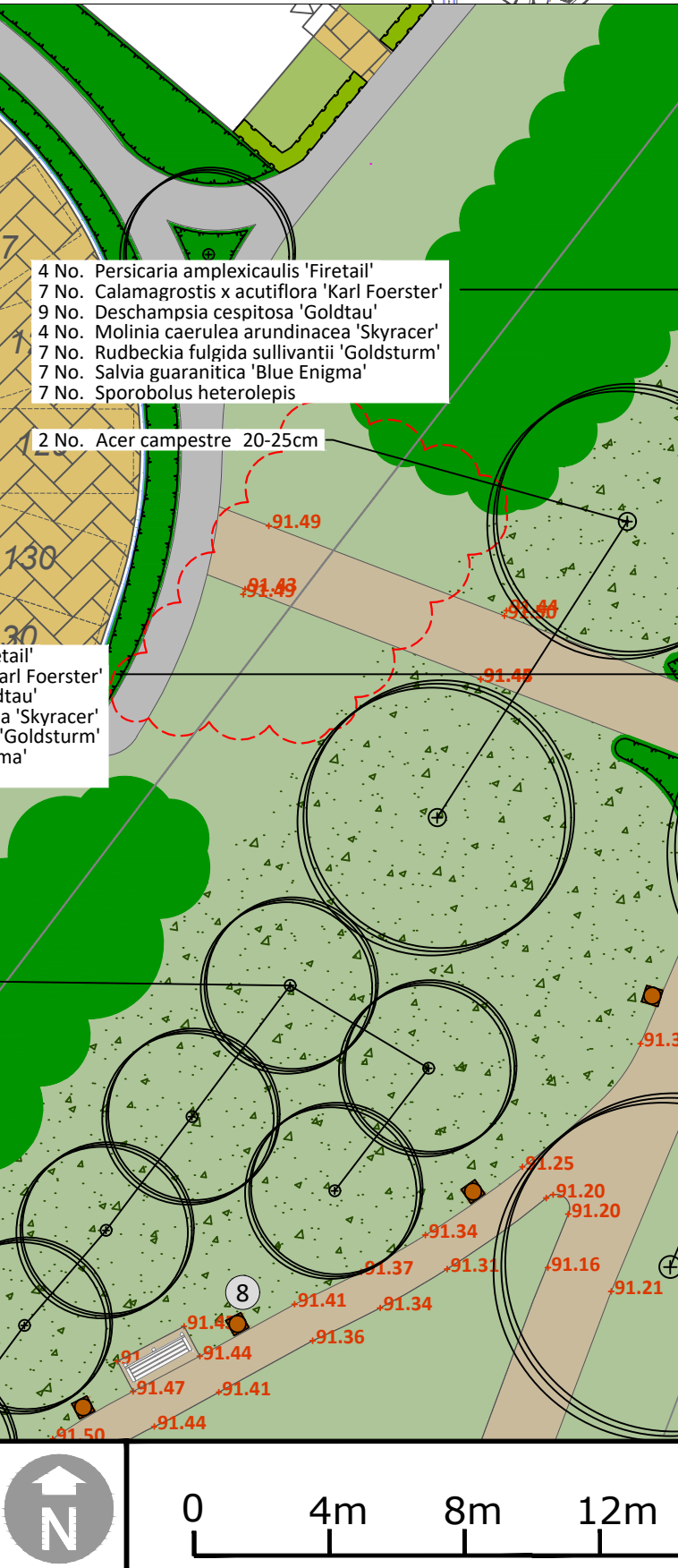
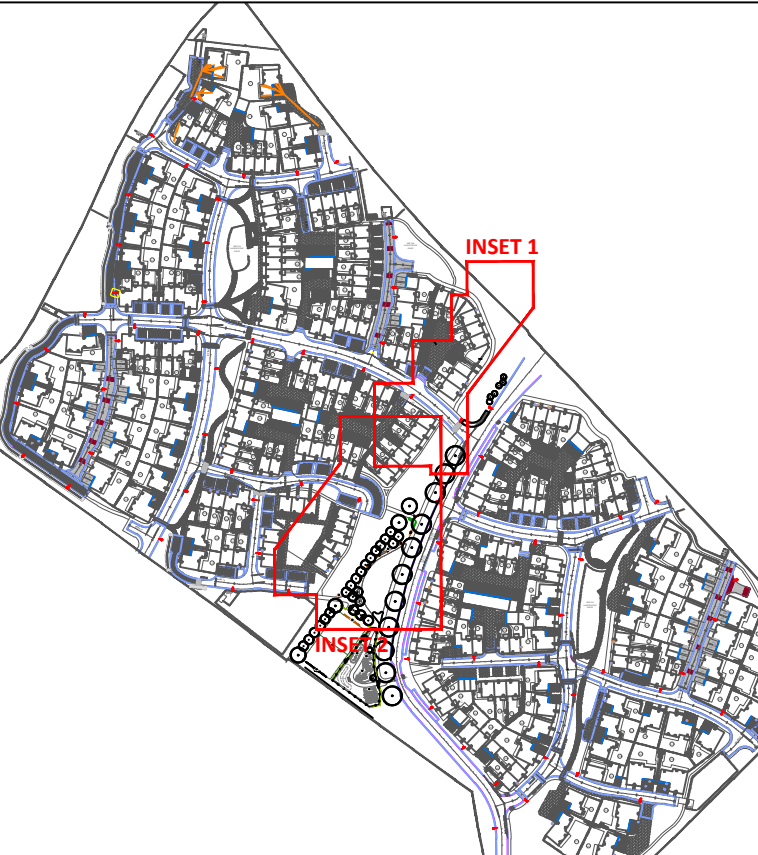
Species	Height	Girth	Specification	Quantity
Acer campestre	500-550cm	20-25cm	Semi-Mature: 3x: RB: Clear Stem min. 200cm	4 No.
Amelanchier x grandiflora 'Robin Hill'	min. 450cm	25-30cm	Semi-Mature: 4x: RB: Clear Stem min. 200cm	6 No.
Betula 'Edinburgh'	500-550cm	20-25cm	Semi-Mature: 3x: RB: Clear Stem min. 200cm	21 No.
Malus 'Professor Sprenger'	min. 450cm	20-25cm	Semi-Mature: 3x: RB: Clear Stem min. 200cm	3 No.
Malus domestica 'Cox's Orange Pippin'	450-500cm	18-20cm	Extra Heavy Standard: 3x: RB: Clear Stem min. 200cm	1 No.
Malus domestica 'Discovery'	450-500cm	18-20cm	Extra Heavy Standard: 3x: RB: Clear Stem min. 200cm	1 No.
Malus domestica 'James Grieve'	450-500cm	18-20cm	Extra Heavy Standard: 3x: RB: Clear Stem min. 200cm	1 No.
Tilia cordata	500-550cm	20-25cm	Semi-Mature: 3x: RB: Clear Stem min. 200cm	11 No.

Species	Height	Pot Size	Specification	Density	Quantity
Carpinus betulus	100-125cm		1+2: Feathered: B	0.3Ctr Double Staggered at 0.3m offset	603 No.

Species	Diameter	Height	Pot Size	Specification	Density	Quantity
Ajuga reptans 'Catlin's Giant'			3L	Full Pot: C	6/m <sup>2</sup>	19 No.
Bergenia 'Silberlicht'			3L	Full Pot: C	6/m <sup>2</sup>	96 No.
Calamagrostis x acutiflora 'Karl Foerster'			3L	Full Pot: C	6/m <sup>2</sup>	52 No.
Ceanothus thyrsiflorus repens	30-40cm		3L	Bushy: 5 brks: C	6/m <sup>2</sup>	9 No.
Deschampsia cespitosa 'Goldtau'			3L	Full Pot: C	6/m <sup>2</sup>	184 No.
Molinia caerulea arundinacea 'Skracer'			5L	Full Pot: C	6/m <sup>2</sup>	33 No.
Nepeta 'Six Hills Giant'			3L	Full Pot: C	6/m <sup>2</sup>	56 No.
Persicaria amplexicaulis 'Firetail'			3L	Full Pot: C	6/m <sup>2</sup>	33 No.
Rosmarinus 'Prostratus'	30-40cm		3L	Bushy: 5 brks: C	6/m <sup>2</sup>	47 No.
Rudbeckia fulgida sullivanti 'Goldsturm'			3L	Full Pot: C	6/m <sup>2</sup>	52 No.
Salvia guaranica 'Blue Enigma'			2L	Full Pot: C	6/m <sup>2</sup>	52 No.
Sporobolus heterolepis			3L	Full Pot: C	6/m <sup>2</sup>	52 No.
Stipa gigantea			3L	Full Pot: C	6/m <sup>2</sup>	56 No.
Veronica prostrata			3L	Full Pot: C	6/m <sup>2</sup>	171 No.

**PLANTING NOTES**

- Base of all planting to be covered with 75mm of well composted bark mulch.
- Species to be planted at densities shown in groups of 6-9 individuals.
- Species to be planted in ascending size from front to rear of borders.
- Terram RootGuard, or equal & approved root barriers to be installed where services or hard surfacing fall within 5m of a proposed tree.



Symbol	Description
[Red dashed line]	APPLICATION BOUNDARY
[Green area]	EXISTING VEGETATION
[Red dashed line]	EXISTING VEGETATION TO BE REMOVED
[Green circle]	PROPOSED TREE See planting schedule.
[Green area]	PROPOSED PLANTING AREA See planting schedule.
[Green line]	PROPOSED HEDGE See planting schedule.
[Green area]	PROPOSED AMENITY GRASS DLF Trifolium 'Pro Master 27 Ecosward Plus', sown at 25g / m <sup>2</sup>
[Green area]	PROPOSED LONG GRASS DLF Trifolium 'Pro Master 27 Ecosward Plus', sown at 25g/m <sup>2</sup> . Over sow with: WFG20 Eco Species Rich Lawn sown @ 5g/m <sup>2</sup> .
[Green area]	SPORTS GRASS DLF Trifolium 'PM 70 Recreation', sown at 40g/m <sup>2</sup> .
[Square symbol]	PROPOSED SEAT & BINS Woodscape Totting Seat; Woodscape Square Lockable Litter Bin, Fixed Top; LBS 112; BROXAP K-Nine Post Mount Dog Waste Bin; BK45 2580-PM
[Square symbol]	PROPOSED PICNIC TABLE Woodscape Cleveland Picnic Bench
[Patterned area]	COLOURED BITMAC Tarmac Utlouclour Buff with metal edging.
[Patterned area]	FOOTPATH GRAVEL CEDEC Gold Footpath Gravel with metal edging.
[Patterned area]	BONDED SAFETY MULCH Jungle Mulch supplied by PlaySmart. Rustic Colour. FFL to meet equipment requirements.
[Line symbol]	PROPOSED PLAY AREA FENCING Playtime steel fencing 1m high by Jacksons in black. With matching self closing 1100mm wide gates and 3460mm wide maintenance gates.
[Red number]	EXISTING/PROPOSED LEVELS

**Notes**

Issue: Drawn by David Jarvis Associates Limited (CROWN COPYRIGHT. ALL RIGHTS RESERVED 2015 LICENCE NUMBER 0100031). This drawing is for Planning purposes only - Do not use this drawing for Construction. The information contained in the drawing should be used as a guide to the final forms and finishes of the landscape scheme. Any revisions to be approved by the Client and Local Authority

**Scaling:** Do not scale this drawing. Use given dimensions only.

**Setting out:** refer to Engineers for information regarding setting out. In the event of discrepancy refer to Engineers in the first instance.

**Services:** Where possible these are identified on the drawings but, for the avoidance of doubt all service/utility locations should be considered indicative until identified on site. To ensure those services / utilities shown are current refer to the original survey provider or utilities designer or Client for confirmation and further information regarding easements. In the event of new services being installed refer to the appointed Engineer.

**Lighting:** Refer to lighting engineers drawings.

**Planting:** Plant species are selected and located in line with consideration of the site conditions, NHC guidelines and discussions with the Local Authority and design team. All plants and planting procedure to conform to the David Jarvis Associates Limited Landscape Specification that will accompany the Construction Issue drawings. No species or plant location is to be varied without prior consent of the Landscape Architect.

**Design Levels:** Refer to Engineers where design levels are not shown.

**CDM:** Drawings to be read in conjunction with Designers risk assessment. Potential risks above that of those associated with the general construction typical to the drawing are identified below;

Rev.	Date	Description	Drawn	Checked
P5	31/10/2018	Updated to CDC comments dated 24/07/18 rev 191018	GR	BS
P4	16/04/2018	Updated following CDC comments.	GR	BS
P3	18/12/2017	Minor amendment to annotation.	GR	BS
P2	06/12/2017	Updated to Crest comments.	GR	BS
P1	04/12/2017	First issue.	GR	BS

Status **PLANNING**

**DAVID JARVIS ASSOCIATES**  
 DAVID JARVIS ASSOCIATES LIMITED  
 1 Tenbyon Street Swindon Wiltshire SN1 5DT  
 t: 01793 612173  
 e: mail@davidjarvis.biz  
 w: www.davidjarvis.biz

Client **ELMSBROOK (CREST A2D) LLP**

Project **ELMSBROOK, BICESTER PHASES 3 & 4**

Drawing Title **CENTRAL OPEN SPACES**

Scale	Sheet Size	Date
<b>1:200</b>	<b>A1</b>	<b>04/12/2017</b>
Drawing No.	Revision	
<b>14790/5014</b>	<b>P5</b>	