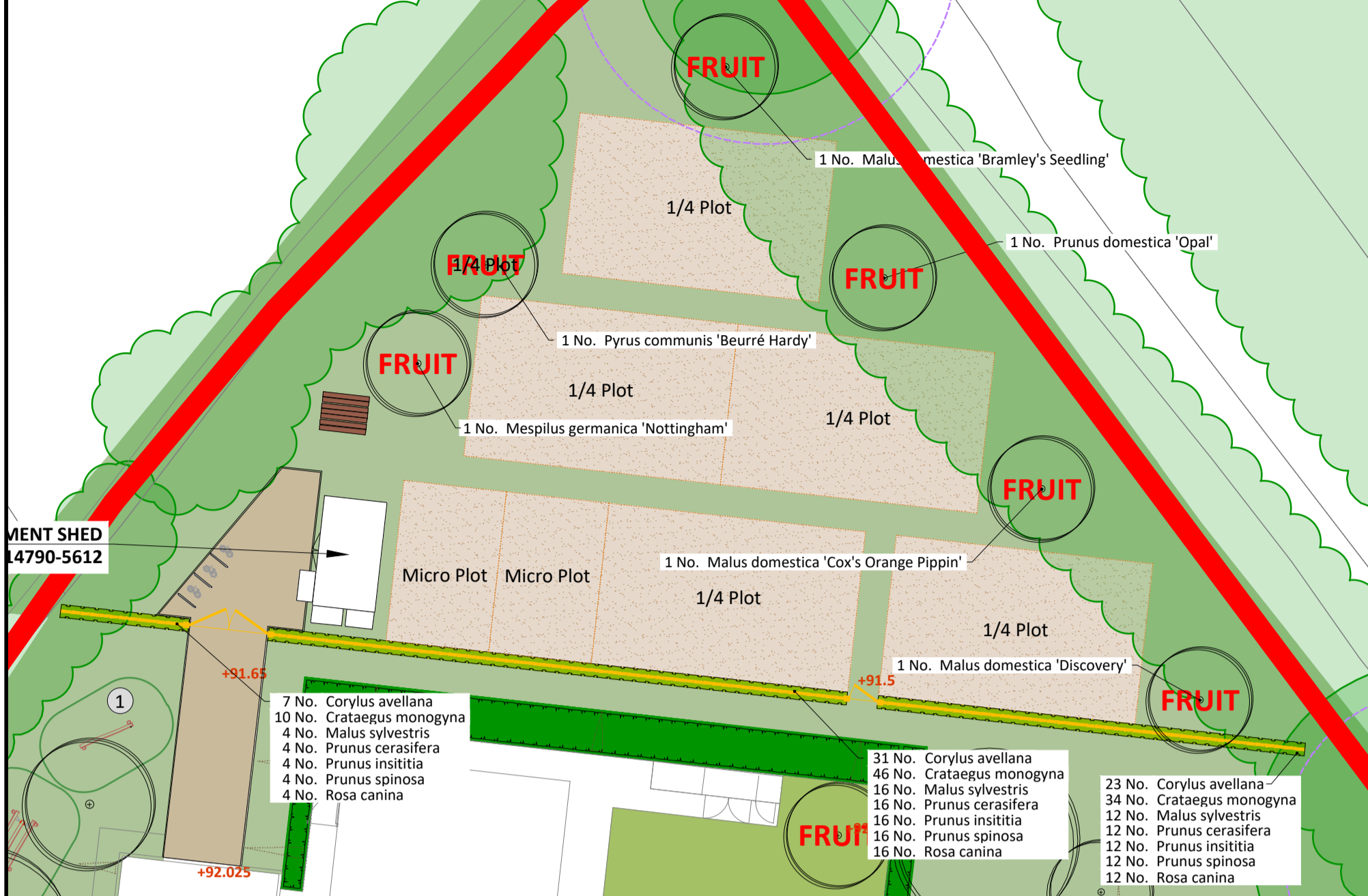
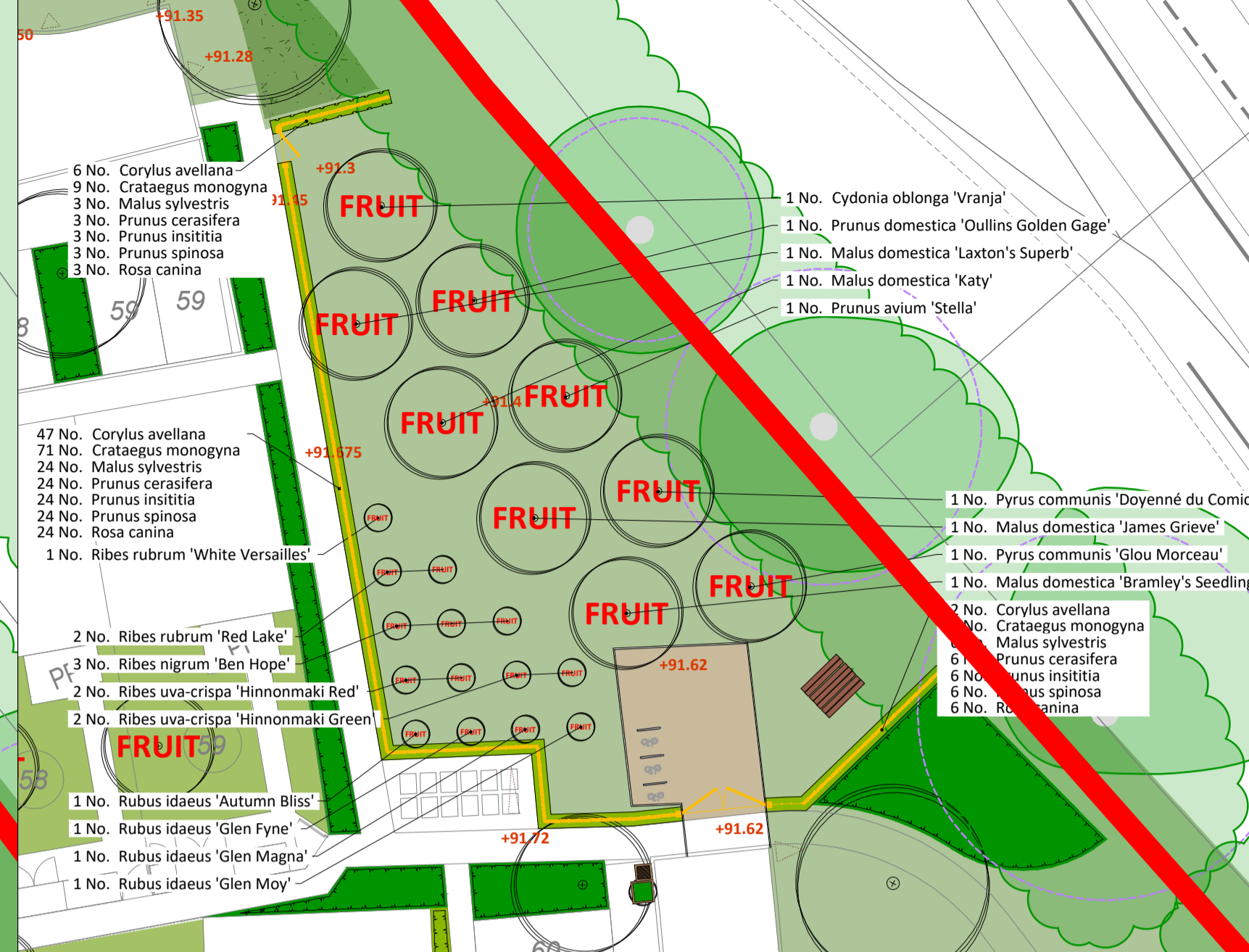


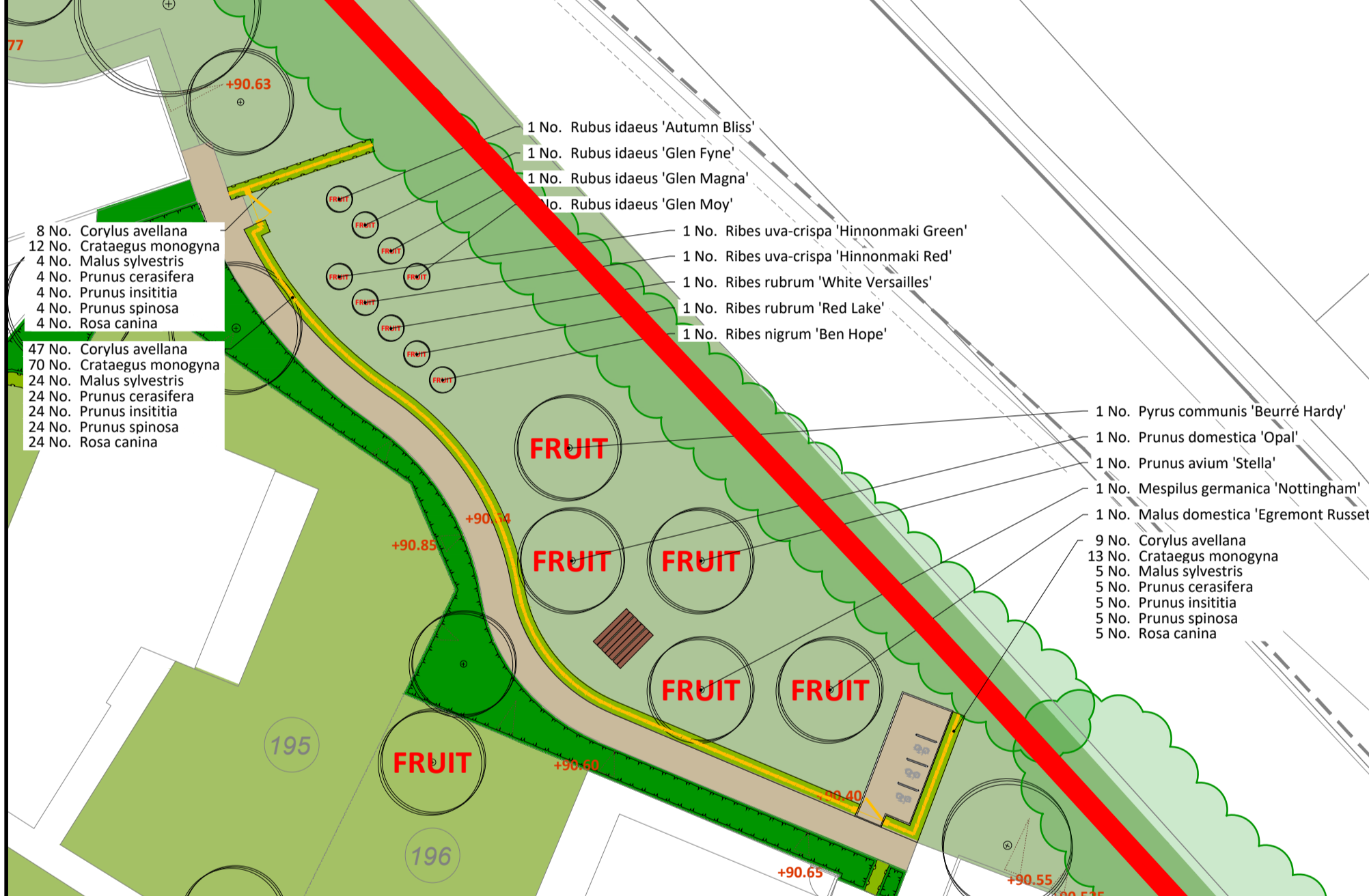
### COMMUNITY GARDEN 1



### COMMUNITY GARDEN 2



### COMMUNITY GARDEN 3



### COMMUNITY GARDEN 4



#### PLANTING SCHEDULE SPECIMENS

Species	Height	Girth	Pot Size	Specification	Quantity
Cydonia oblonga 'Vranja'	175-200cm		10-15L	Half Standard: Pyrus communis Rootstock: 3 brks: C: Clear Stem 100-125cm	3 No.
Malus domestica 'Bramley's Seeding'	175-200cm			Half Standard: MM106 Rootstock: 3 brks: B: Clear Stem 100-125cm	3 No.
Malus domestica 'Cox's Orange Pippin'	175-200cm			Half Standard: MM106 Rootstock: 3 brks: B: Clear Stem 100-125cm	3 No.
Malus domestica 'Discovery'	175-200cm			Half Standard: MM106 Rootstock: 3 brks: B: Clear Stem 100-125cm	2 No.
Malus domestica 'Egremont Russet'	175-200cm			Half Standard: MM106 Rootstock: 3 brks: B: Clear Stem 100-125cm	3 No.
Malus domestica 'James Grieve'	175-200cm			Half Standard: MM106 Rootstock: 3 brks: B: Clear Stem 100-125cm	3 No.
Malus domestica 'Katy'	175-200cm			Half Standard: MM106 Rootstock: 3 brks: B: Clear Stem 100-125cm	3 No.
Malus domestica 'Laxton's Superb'	175-200cm			Half Standard: MM106 Rootstock: 3 brks: B: Clear Stem 100-125cm	3 No.
Mespilus germanica 'Nottingham'	175-200cm			Half Standard: Pyrus communis Rootstock: 3 brks: B: Clear Stem 100-125cm	3 No.
Prunus avium 'Stella'	175-200cm			Half Standard: Prunus F.12.1 Rootstock: 3 brks: B: Clear Stem 100-125cm	3 No.
Prunus domestica 'Opal'	175-200cm			Half Standard: Myrobalan B Rootstock: 3 brks: B: Clear Stem 100-125cm	3 No.
Prunus domestica 'Oullins Golden Gage'	175-200cm			Half Standard: Pyrus communis Rootstock: 3 brks: B: Clear Stem 100-125cm	3 No.
Pyrus communis 'Beurré Hardy'	175-200cm			Half Standard: Pyrus communis Rootstock: 3 brks: B: Clear Stem 100-125cm	2 No.
Pyrus communis 'Doyenné du Comice'	175-200cm			Half Standard: Pyrus communis Rootstock: 3 brks: B: Clear Stem 100-125cm	2 No.
Pyrus communis 'Glou Morceau'	175-200cm			Half Standard: Pyrus communis Rootstock: 3 brks: B: Clear Stem 100-125cm	2 No.
Ribes nigrum 'Ben Hope'	60-80cm	3L		Bush: 3/5 Shoots: C	5 No.
Ribes rubrum 'Red Lake'	60-80cm	3L		Bush: 3/4 Shoots: C	4 No.
Ribes rubrum 'White Versailles'	60-80cm	3L		Bush: 3/4 Shoots: C	3 No.
Ribes uva-crispa 'Hinnonmaki Green'	40-60cm	3L		Bush: 5/8 Shoots: C	4 No.
Ribes uva-crispa 'Hinnonmaki Red'	40-60cm	3L		Bush: 5/8 Shoots: C	4 No.
Rubus idaeus 'Autumn Bliss'	40-60cm	2L		Strong Cane: C	2 No.
Rubus idaeus 'Glen Fyne'	40-60cm	2L		Strong Cane: C	3 No.
Rubus idaeus 'Glen Magna'	40-60cm	2L		Strong Cane: C	2 No.
Rubus idaeus 'Glen Moy'	40-60cm	2L		Strong Cane: C	2 No.

#### HEDGES

Species	Height	Specification	Density	Quantity
Corylus avellana	60-80cm	1+2: Transplant - seed raised: Branched: 3 brks: B	0.3Ctr Double Staggered at 0.1m offset	565 No.
Crataegus monogyna	60-80cm	1+1: Transplant - seed raised: B	0.3Ctr Double Staggered at 0.1m offset	841 No.
Malus sylvestris	60-80cm	1+1: Transplant - seed raised: B	0.3Ctr Double Staggered at 0.1m offset	287 No.
Prunus cerasifera	60-80cm	1+1: Transplant - seed raised: Branched: 3 brks: B	0.3Ctr Double Staggered at 0.1m offset	287 No.
Prunus insititia	60-80cm	1+1: Transplant - seed raised: Branched: 3 brks: B	0.3Ctr Double Staggered at 0.1m offset	287 No.
Prunus spinosa	60-80cm	1+1: Transplant - seed raised: Branched: 2 brks: B	0.3Ctr Double Staggered at 0.1m offset	287 No.
Rosa canina	60-80cm	1+1: Transplant - seed raised: Branched: 3 brks: B	0.3Ctr Double Staggered at 0.1m offset	287 No.

#### PLANTING AREAS

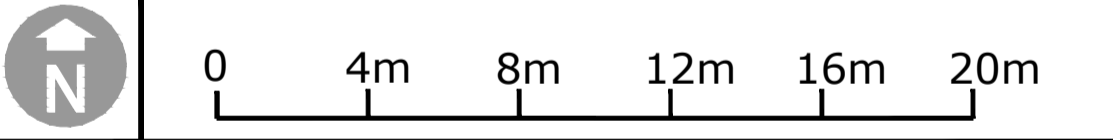
Species	Diameter	Height	Pot Size	Specification	Density	Quantity
Allium schoenoprasum			3L	Full Pot: C	5/m²	4 No.
Fragaria vesca			3L	Full Pot: C	5/m²	18 No.
Fragaria x ananassa 'Cambridge Favourite'			3L	Full pot: 2 Strong Buds: C	6/m²	8 No.
Lavandula angustifolia 'Hidcote'	20-30cm		3L	Bushy: 5 brks: C	3/m²	4 No.
Lavandula x intermedia 'Alba'	20-30cm		3L	Bushy: 5 brks: C	3/m²	4 No.
Melissa officinalis 'Aurea'			3L	Full Pot: C	5/m²	6 No.
Mentha spicata			3L	Full Pot: C	3/m²	2 No.
Mentha x piperita			3L	Full Pot: C	3/m²	2 No.
Origanum vulgare 'Aureum'			3L	Full Pot: C	4/m²	5 No.
Rhœum x hybridum 'Timperley Early'			3L	Full pot: 2 Strong Buds: C	No.	3 No.
Ribes nigrum 'Ben Hope'	60-80cm	3L		Bush: 3/5 Shoots: C	No.	1 No.
Ribes uva-crispa 'Hinnonmaki Red'	40-60cm	3L		Bush: 5/8 Shoots: C	No.	1 No.
Rosmarinus officinalis 'Prostratus'	20-30cm		3L	Bushy: 4 brks: C	3/m²	4 No.
Salvia officinalis			3L	Full Pot: C	5/m²	6 No.
Thymus vulgaris			3L	Full Pot: C	4/m²	5 No.
Thymus x citriodorus 'Bertram Anderson'			3L	Full Pot: C	4/m²	5 No.

#### PLANTING NOTES

- Base of all planting to be covered with 75mm of well composted bark mulch.
- Species to be planted at densities shown in groups of 6-9 individuals.
- Species to be planted in ascending size from front to rear of borders.
- Terram Rootguard, or equal & approved root barriers to be installed where services or hard surfacing fall within 5m of a proposed tree.

#### KEY

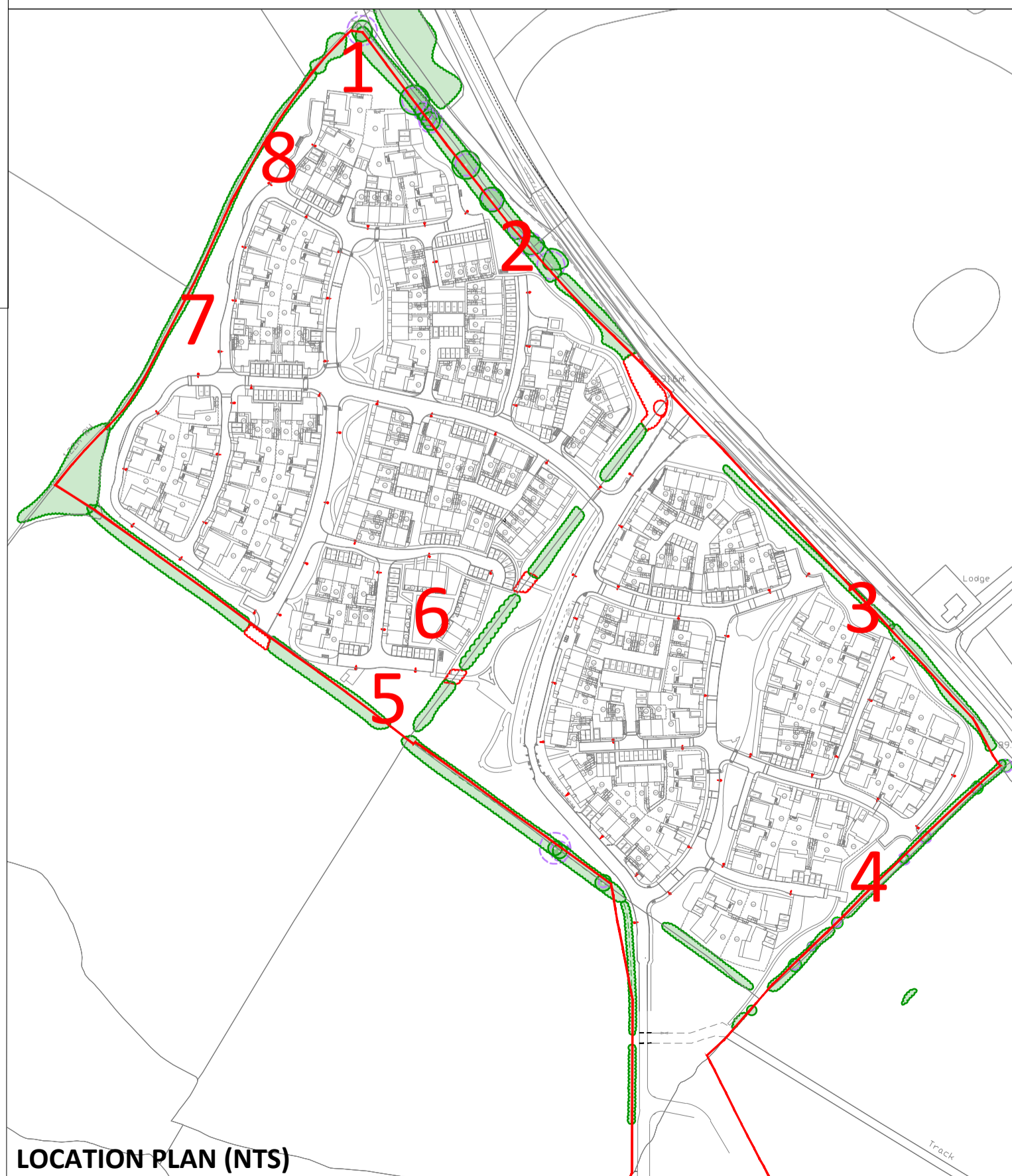
- APPLICATION BOUNDARY
- EXISTING VEGETATION
- EXISTING VEGETATION TO BE REMOVED
- PROPOSED FRUIT TREE/BUSH  
See planting schedule on drg. 14790/5017
- PROPOSED HEDGE  
See planting schedule on drg. 14790/5017
- PROPOSED PLANTING AREA  
See planting schedule on drg. 14790/5017
- PROPOSED AMENITY GRASS  
DLF Trifolium 'Pro-Master' 27 Ecoward Plus' sown @ 25g/m².
- FOOTPATH GRAVEL  
CEDEC Gold Footpath Gravel with metal edging.
- PROPOSED PICNIC TABLE  
Woodscape Cleveland Picnic Bench
- CYCLE STANDS  
Marishals Natural Elements in 'Corten Fossil'
- POST & WIRE FENCE  
See drg. 14790/5608 for details
- RAISED PLANTER  
1200 x 1200mm x VARIOUS HEIGHTS. TIMBER SOFTWOOD SLEEPER PLANTERS. SLEEPERS LAID ON EDGE AND FIRED AT RIGHT ANGLES USING TIMBERLOCK RAILWAY SLEEPER SCREWS. INTERNAL METAL BRACES USED TO TIE MULTIPLE LAYERS TOGETHER. PLANTER LINED WITH HEAVY DUTY PLASTIC MEMBRANE. FILLED WITH BS COMPLIANT TOPSOIL.



Notes  
Issue: Drawn by David Jarvis Associates Limited (CROWN COPYRIGHT. ALL RIGHTS RESERVED 2015 LICENCE NUMBER 0100031). This drawing is for Planning purposes only - Do not use this drawing for Construction. The information contained in the drawing should be used as a guide to the final forms and finishes of the landscape scheme. Any revisions to be approved by the Client and Local Authority

Scaling: Do not scale this drawing. Use given dimensions only.  
Setting out: refer to Engineers for information regarding setting out. In the event of discrepancy refer to Engineers in the first instance.  
Survey: Original survey provided by the Client.  
Services: Where possible these are identified on the drawings but, for the avoidance of doubt all service/utility locations should be considered indicative until identified on site. To ensure those services / utilities shown are current refer to the original survey provider or utilities designer or Client for confirmation and further information regarding easements. In the event of new services being installed refer to the appointed Engineer. It is recommended that hazard warning tape 'danger electric cable'/ 'danger services' to be installed over all service routes (to remain on site) to current BS guidelines (BS7671).  
Lighting: Refer to lighting engineers drawings.  
Planting: Plant species are selected and located in line with consideration of the site conditions, NHBC guidelines and discussions with the Local Authority and design team. All plants and planting procedure to conform to the David Jarvis Associates Limited Landscape Specification that will accompany the Construction issue drawings. No species or plant location is to be varied without prior consent of the Landscape Architect.  
Foundations: Developers / Contractors to ensure that all foundations (buildings and external walling) are designed and constructed so as to take into account, at the time of maturity, any existing or proposed trees, hedgerows or other vegetation on the application site or existing vegetation on land adjoining the site at the time of construction and any trees felled or hedgerows removed on or adjacent to the site during the previous 15 years. For this purpose the developer / contractors will submit all relevant details to the authority dealing with the Building Regulations Certificate.  
Design Levels: Refer to Engineers where design levels are not shown.  
CDM: Drawings to be read in conjunction with Designers risk assessment. Potential risks above that of those associated with the general construction typical to the drawing are identified below;

Allotment Sheds  
Storage shed to be formed by 'Empire shed' by Wayfair or similar approved. To incorporating vertical and horizontal slat timber cladding, fully lockable doors to match cladding, Colour- Natural, Pent roof, timber Post and roof fixed. Size as shown.  
Two 'Ecosure' Water butt by Tankshop or similar approved. Incorporating 1050 Litres of water each and Weatherproof (Resistant against corrosion). Size as shown.  
see drgs. 14790 5017 & 14790 5018 for further information



LOCATION PLAN (NTS)

Rev.	Date	Description	Drawn	Checked
P3	16/04/2018	Updated following CDC comments.	GR	BS
P2	12/02/2018	Allotment shed added to community garden 7	GR	BS
P1	04/12/2017	First issue.	GR	BS

Status  
**PLANNING**

**DAVID JARVIS ASSOCIATES**  
DAVID JARVIS ASSOCIATES LIMITED  
1 Tenison Street Swindon Wiltshire SN1 5DT  
t: 01793 612173  
e: mail@davidjarvis.biz  
w: www.davidjarvis.biz

Client  
**ELMSBROOK (CREST A2D) LLP**

Project  
**ELMSBROOK, BICESTER PHASES 3 & 4**

Drawing Title  
**COMMUNITY GARDENS SHEET 1 OF 2**

Scale	Sheet Size	Date
<b>1:200</b>	<b>A1</b>	<b>04/12/2017</b>
Drawing No.	Revision	
<b>14790/5017</b>	<b>P3</b>	