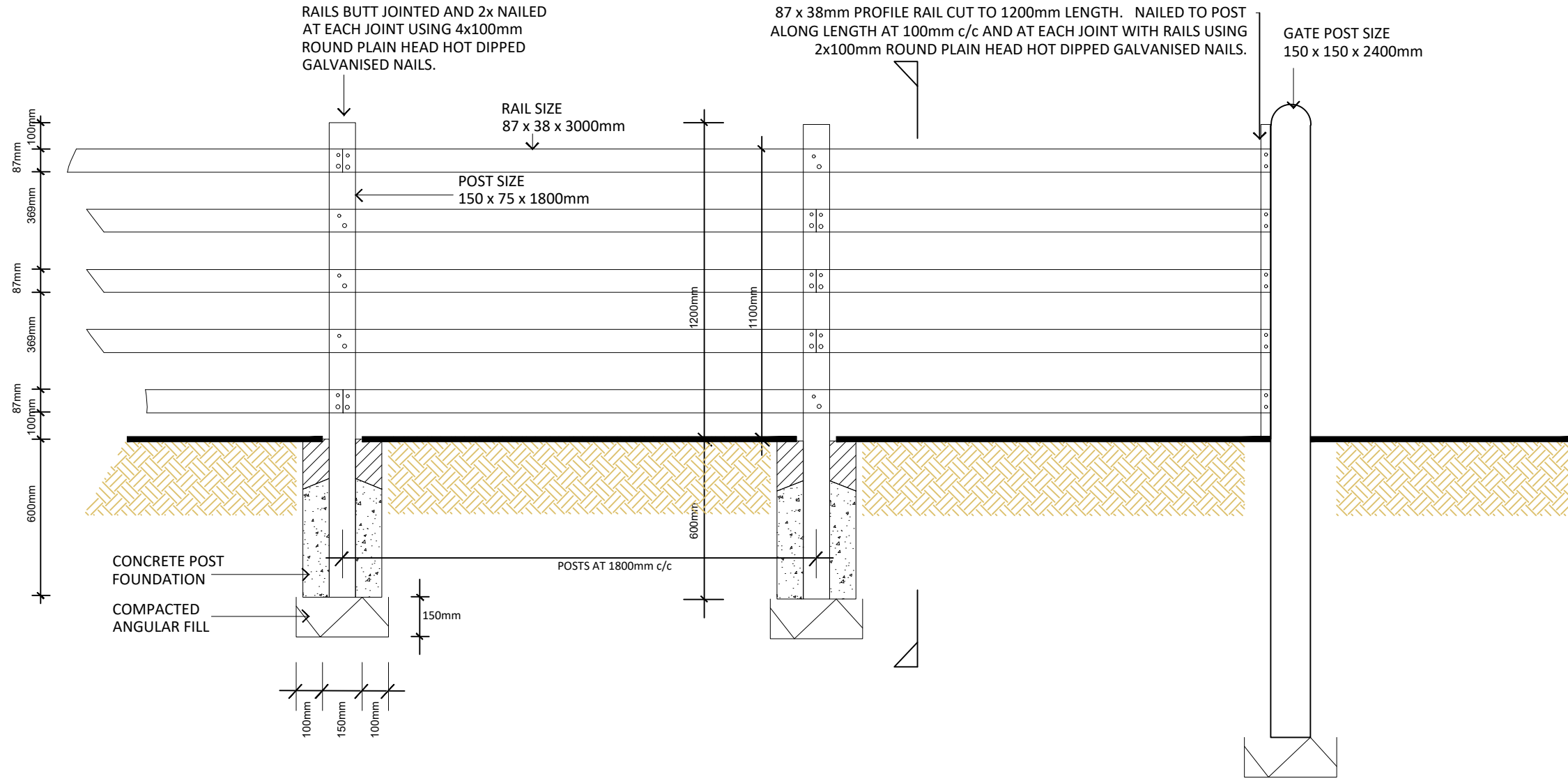
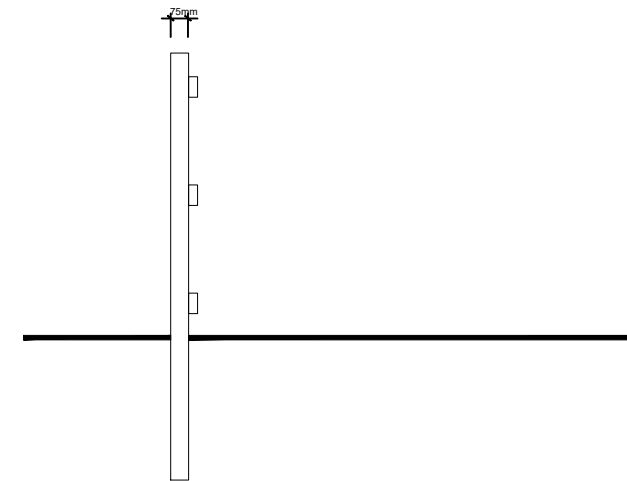


FRONT ELEVATION



SECTION



POST AND 3 RAIL FENCING NOTES

- STANDARD:** BS 1722 (2006) All relevant Parts. Fence Type SPR 11/3.
- TIMBER (GENERALLY):** All to be slow grown, pressure treated softwood. All cuts to be treated with wood preservative. Timber shall be preserved in accordance with the recommendations for fencing timber (rails use class 3; posts use class 4) given in BS 8417.
- SUPPLIER:** Contractors choice.
- TIMBER POST:**
- UNIT TYPE:** Pressure treated timber square sawn post
- UNIT DIMENSIONS:** 150x75x1800mm for intermediate posts  
150x150x2400mm for gate posts.
- POST PROFILE:** Flat Top for intermediate posts  
Round Top for gate posts
- POST CENTRES:** 1800mm ctrs.
- POST HOLE DIMENSIONS:** min. 350x350x600mm deep hole backfilled with concrete foundation & rammed earth on 150mm deep compacted angular fill
- CONCRETE SPEC:** At least one part cement to 10 parts 20 mm all-in ballast to BS EN 12620:2002 mixed with the minimum requisite quantity of clean water, or grade C8/10 or S72 concrete to BS 8500 parts 1 and 2. The concrete shall be placed in position before commencement of the initial set. Source: BS 1722-7 (2006) Clause 7.2.
- TIMBER RAIL:**
- UNIT TYPE:** Pressure treated timber square sawn rail.
- UNIT DIMENSIONS:** 38 x 87 x 1950mm long.
- FIXTURES & FITTINGS:**
- RAILS GENERALLY:** Rails shall be butt-jointed within the middle third of the 150mm face of a main post.
- FIXINGS GENERALLY:** The joints shall be staggered so that alternate joints occur on one post. The rails shall be nailed on to each post with two 4 mm x 100 mm nails, driven in on the skew.
- WELDED MESH:** To BS EN 10223. Green PVC coated galvanised welded mesh roll. 50/50 aperture size 2.5/3.1mm wire. Bottom of mesh securely buried 300mm below surface.
- SUPPLIER:** Jacksons Fencing Heavy Welded Mesh Green PVC or similar approved.

Drawing Revision

Rev.	Date	Description	Drawn	Checked
P1	15/11/2017	First draft issued to client.	LT	PG

Status

**PLANNING**

**DAVID JARVIS ASSOCIATES**

DAVID JARVIS ASSOCIATES LIMITED  
1 Tennyson Street Swindon Wiltshire SN1 5DT  
t: 01793 612173  
e: mail@davidjarvis.biz  
w: www.davidjarvis.biz

Client

**ELMSBROOK (CREST A2D) LLP**

Project

**ELMSBROOK, BICESTER  
PHASES 3 & 4**

Drawing Title

**TIMBER 5 RAIL FENCE DETAILS**

Scale <b>1:20</b>	Sheet Size <b>A3</b>	Date <b>04/12/2017</b>
----------------------	-------------------------	---------------------------

Drawing No. <b>14790/5609</b>	Revision <b>P1</b>
----------------------------------	-----------------------

