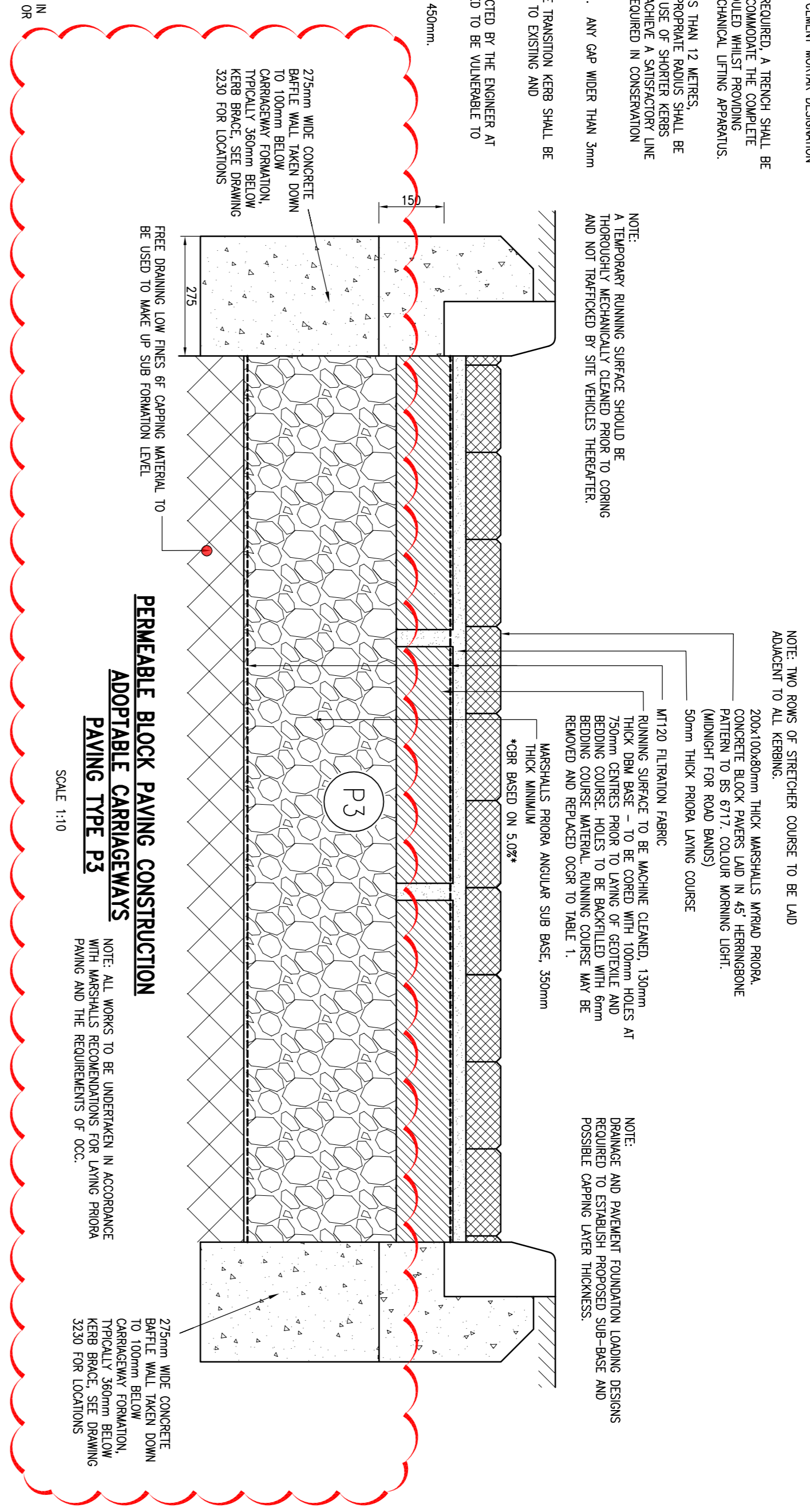


KEY NOTES:

1. KERBS SHALL BE PRECAST CONCRETE KERBS COMPLYING WITH BS EN 1240 AND CLAUSE 1101 OF PREPARATION FOR HIGHWAY WORKS.
2. LAY C10 CONCRETE KERB BASE TO CLAUSE 2802 SHALL BE Laid ON THE SUB-BASE AND SHALL BE A MINIMUM THICKNESS OF 150mm. SUB-BASE SHALL BE EXCAVATED WHERE NECESSARY TO ACHIEVE 150mm THICKNESS. RECOMPACT DISTURBED SUB-BASE PRIOR TO CONSTRUCTION OF KERB BASE. THE KERB BASE SHALL BE CONSTRUCTED TO A MINIMUM OF 100mm ABOVE FINISHED SURFACE. CONCRETE BASE IS Laid IN ADVANCE OF KERBS, 200 x 250mm WALKER MID STEEL POWEL BARS WILL BE REQUIRED IN BAYING AT 450mm CENTRES. KERBS WILL THEN BE Laid ON 100mm TO 100mm THICKNESS GARDEN WORKER DESIGNATION (0) B20 TO CLAUSE 2104.
3. WHERE EXCAVATION INTO EXISTING CARREGWAY IS REQUIRED, A TRENCH SHALL BE EXCAVATED OF SUFFICIENT DEPTH AND WIDTH TO ACCOMMODATE THE COMPLETE KERB AND SUB-BASE. THE TRENCH SHALL BE REPAIRED TO ORIGINAL FINISH AND SUFFICIENT SPACE FOR THE NECESSARY USE OF MECHANICAL LIFTING APPARATUS.
4. WHERE IT IS REQUIRED TO LAY KERBS TO PAUL LESS THAN 12 METRES, THE KERBS SHALL BE USED AND CONSIDERATION SHALL BE GIVEN TO THE USE OF SHORTER KERBS WITHOUT LARGE JOINTS. GRANITE KERBS MAY BE REQUIRED IN CONSERVATION AREAS.
5. THE MINIMUM GAP BETWEEN KERBS SHALL BE 3mm. ANY GAP WIDER THAN 3mm SHALL BE FILL WITH SAND.
6. THE APPROPRIATE 9mm LONG PRECAST CONCRETE TRANSITION KERB SHALL BE INSTALLED AT EACH CHANGE IN KERB TYPE. THE KERBS TO BE EXTENDING AND TERMINATIONS.
7. INSTALLATION OF POWEL BARS MAY ALSO BE INSTRUCTED BY THE ENGINEER AT LOCATIONS WHERE STANDARD KERBS ARE CONSIDERED TO BE VULNERABLE TO DAMAGE CAUSED BY VEHICLE IMPACT.
8. THE MINIMUM LENGTH OF ANY CUT KERB SHALL BE 450mm.

CONCRETE BATTLE WALLS REQUIRED ON ALL PERMEABLE ROADS, APART FROM SIDES WHERE NO HOUSES ARE PRESENT.



NOTE: CONCRETE BATTLE WALLS ARE NOT REQUIRED IN PERMEABLE ROADS WHERE THERE ARE NO SERVICES OR HOUSES ADJACENT TO THE CARREGWAY.

NOTE: CONCRETE BATTLE WALLS ARE NOT REQUIRED IN PERMEABLE ROADS, APART FROM SIDES WHERE NO HOUSES ARE PRESENT.

NOTE: CONCRETE BATTLE WALLS ARE NOT REQUIRED IN PERMEABLE ROADS, APART FROM SIDES WHERE NO HOUSES ARE PRESENT.

NOTE: CONCRETE BATTLE WALLS ARE NOT REQUIRED IN PERMEABLE ROADS, APART FROM SIDES WHERE NO HOUSES ARE PRESENT.

NOTE: CONCRETE BATTLE WALLS ARE NOT REQUIRED IN PERMEABLE ROADS, APART FROM SIDES WHERE NO HOUSES ARE PRESENT.

NOTE: CONCRETE BATTLE WALLS ARE NOT REQUIRED IN PERMEABLE ROADS, APART FROM SIDES WHERE NO HOUSES ARE PRESENT.

NOTE: CONCRETE BATTLE WALLS ARE NOT REQUIRED IN PERMEABLE ROADS, APART FROM SIDES WHERE NO HOUSES ARE PRESENT.

NOTE: CONCRETE BATTLE WALLS ARE NOT REQUIRED IN PERMEABLE ROADS, APART FROM SIDES WHERE NO HOUSES ARE PRESENT.

NOTE: CONCRETE BATTLE WALLS ARE NOT REQUIRED IN PERMEABLE ROADS, APART FROM SIDES WHERE NO HOUSES ARE PRESENT.

NOTE: CONCRETE BATTLE WALLS ARE NOT REQUIRED IN PERMEABLE ROADS, APART FROM SIDES WHERE NO HOUSES ARE PRESENT.

NOTE: CONCRETE BATTLE WALLS ARE NOT REQUIRED IN PERMEABLE ROADS, APART FROM SIDES WHERE NO HOUSES ARE PRESENT.

NOTE: CONCRETE BATTLE WALLS ARE NOT REQUIRED IN PERMEABLE ROADS, APART FROM SIDES WHERE NO HOUSES ARE PRESENT.

NOTE: CONCRETE BATTLE WALLS ARE NOT REQUIRED IN PERMEABLE ROADS, APART FROM SIDES WHERE NO HOUSES ARE PRESENT.

NOTE: CONCRETE BATTLE WALLS ARE NOT REQUIRED IN PERMEABLE ROADS, APART FROM SIDES WHERE NO HOUSES ARE PRESENT.

NOTE: CONCRETE BATTLE WALLS ARE NOT REQUIRED IN PERMEABLE ROADS, APART FROM SIDES WHERE NO HOUSES ARE PRESENT.

NOTE: CONCRETE BATTLE WALLS ARE NOT REQUIRED IN PERMEABLE ROADS, APART FROM SIDES WHERE NO HOUSES ARE PRESENT.

NOTE: CONCRETE BATTLE WALLS ARE NOT REQUIRED IN PERMEABLE ROADS, APART FROM SIDES WHERE NO HOUSES ARE PRESENT.

NOTE: CONCRETE BATTLE WALLS ARE NOT REQUIRED IN PERMEABLE ROADS, APART FROM SIDES WHERE NO HOUSES ARE PRESENT.

NOTE: CONCRETE BATTLE WALLS ARE NOT REQUIRED IN PERMEABLE ROADS, APART FROM SIDES WHERE NO HOUSES ARE PRESENT.

TABLE 1

COOR GRANULE	PERCENTAGE BY MASS PASSING	PERCENTAGE BY MASS PASSING
SIEVE SIZE	100	100
100	100	14
63.5	90-100	10
37.5	60-80	6
20	15-30	2
10	0-5	1
		0.063

TABLE 2

COOR GRANULE	PERCENTAGE BY MASS PASSING	PERCENTAGE BY MASS PASSING
SIEVE SIZE	100	100
100	100	14
63.5	90-100	10
37.5	60-80	6
20	15-30	2
10	0-5	1
		0.063

NOTES

1. THIS DRAWING IS COPYRIGHT.
2. THE CONTRACTOR AND HIS SUBCONTRACTOR ARE TO VERIFY ALL DIMENSIONS ON SITE PRIOR TO MAKING SHOP DRAWINGS OR COMMENCING MANUFACTURE.
3. DO NOT SCALE THIS DRAWING. THE CONTRACTOR IS TO BRING TO THE NOTICE OF THE ENGINEER ANY DISCREPANCIES CONTAINED IN THIS DRAWING PRIOR TO WORK COMMENCEMENT.
4. THIS DRAWING IS TO BE READ IN CONJUNCTION WITH ALL RELEVANT ARCHITECTS, ENGINEERS AND SPECIALIST SUB-CONTRACTORS DRAWINGS AND THE SPECIFICATION.
5. ALL SETTING OUT TO BE IN ACCORDANCE WITH THE ARCHITECTS DRAWINGS, ANY DISCREPANCIES BETWEEN THE ENGINEERS AND THE ARCHITECTS DRAWINGS TO BE REFERRED TO THE ARCHITECT BEFORE PROCEEDING. DIMENSIONS MUST NOT BE SCALED.
6. THIS DRAWING HAS BEEN PRODUCED BASED UPON LAYOUTS COMPILED AND SUPPLIED BY THE ARCHITECT IN ELECTRONIC FORMAT. NO RESPONSIBILITY IS TAKEN FOR ANY INACCURACIES AND/OR OMISSIONS IN THE INFORMATION AS SUPPLIED.
7. ALL WORKS TO BE INCLUDED IN THE SECTION 38 AGREEMENT SHALL BE IN ACCORDANCE WITH THE OXFORDSHIRE COUNTY COUNCIL DESIGN GUIDE AND THE SPECIFICATION FOR HIGHWAY WORKS PUBLISHED BY THE DEPARTMENT FOR TRANSPORT.

HEALTH & SAFETY:

ALL WORKS TO BE CARRIED OUT BY A CONTRACTOR COMPETENT TO UNDERTAKE THE CONSTRUCTION OF WORKS AS INDICATED ON THIS DRAWING. THIS DRAWING IS TO BE READ IN CONJUNCTION WITH THE JOB SPECIFIC RISK ASSESSMENT. THE HAZARDS NOTED ARE IN ADDITION TO THE NORMAL HAZARDS AND RISKS FACED BY A COMPETENT CONTRACTOR WHEN DEALING WITH THE TYPE OF WORKS DETAILED ON THIS DRAWING.

SUB BASE THICKNESS SUITABLE FOR ADVISE TO BE SOUTH.

NOTE: CONCRETE BATTLE WALLS ARE NOT REQUIRED IN PERMEABLE ROADS, APART FROM SIDES WHERE NO HOUSES ARE PRESENT.

NOTE: CONCRETE BATTLE WALLS ARE NOT REQUIRED IN PERMEABLE ROADS, APART FROM SIDES WHERE NO HOUSES ARE PRESENT.

NOTE: CONCRETE BATTLE WALLS ARE NOT REQUIRED IN PERMEABLE ROADS, APART FROM SIDES WHERE NO HOUSES ARE PRESENT.

NOTE: CONCRETE BATTLE WALLS ARE NOT REQUIRED IN PERMEABLE ROADS, APART FROM SIDES WHERE NO HOUSES ARE PRESENT.

NOTE: CONCRETE BATTLE WALLS ARE NOT REQUIRED IN PERMEABLE ROADS, APART FROM SIDES WHERE NO HOUSES ARE PRESENT.

NOTE: CONCRETE BATTLE WALLS ARE NOT REQUIRED IN PERMEABLE ROADS, APART FROM SIDES WHERE NO HOUSES ARE PRESENT.

NOTE: CONCRETE BATTLE WALLS ARE NOT REQUIRED IN PERMEABLE ROADS, APART FROM SIDES WHERE NO HOUSES ARE PRESENT.

NOTE: CONCRETE BATTLE WALLS ARE NOT REQUIRED IN PERMEABLE ROADS, APART FROM SIDES WHERE NO HOUSES ARE PRESENT.

NOTE: CONCRETE BATTLE WALLS ARE NOT REQUIRED IN PERMEABLE ROADS, APART FROM SIDES WHERE NO HOUSES ARE PRESENT.

NOTE: CONCRETE BATTLE WALLS ARE NOT REQUIRED IN PERMEABLE ROADS, APART FROM SIDES WHERE NO HOUSES ARE PRESENT.

NOTE: CONCRETE BATTLE WALLS ARE NOT REQUIRED IN PERMEABLE ROADS, APART FROM SIDES WHERE NO HOUSES ARE PRESENT.

NOTE: CONCRETE BATTLE WALLS ARE NOT REQUIRED IN PERMEABLE ROADS, APART FROM SIDES WHERE NO HOUSES ARE PRESENT.

NOTE: CONCRETE BATTLE WALLS ARE NOT REQUIRED IN PERMEABLE ROADS, APART FROM SIDES WHERE NO HOUSES ARE PRESENT.

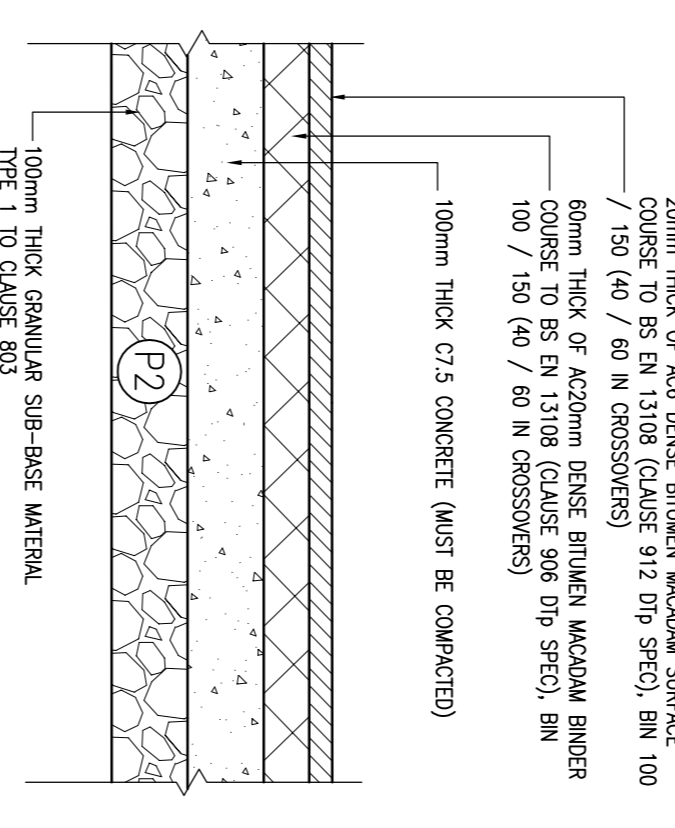
NOTE: CONCRETE BATTLE WALLS ARE NOT REQUIRED IN PERMEABLE ROADS, APART FROM SIDES WHERE NO HOUSES ARE PRESENT.

NOTE: CONCRETE BATTLE WALLS ARE NOT REQUIRED IN PERMEABLE ROADS, APART FROM SIDES WHERE NO HOUSES ARE PRESENT.

NOTE: CONCRETE BATTLE WALLS ARE NOT REQUIRED IN PERMEABLE ROADS, APART FROM SIDES WHERE NO HOUSES ARE PRESENT.

NOTE: CONCRETE BATTLE WALLS ARE NOT REQUIRED IN PERMEABLE ROADS, APART FROM SIDES WHERE NO HOUSES ARE PRESENT.

NOTE: CONCRETE BATTLE WALLS ARE NOT REQUIRED IN PERMEABLE ROADS, APART FROM SIDES WHERE NO HOUSES ARE PRESENT.



FOOTWAY CONSTRUCTION - PAVING TYPE 2

FOOTWAY CONSTRUCTION - PAVING TYPE 2

FOOTWAY CONSTRUCTION - PAVING TYPE 2

FOOTWAY CONSTRUCTION - PAVING TYPE 2

FOOTWAY CONSTRUCTION - PAVING TYPE 2

FOOTWAY CONSTRUCTION - PAVING TYPE 2

FOOTWAY CONSTRUCTION - PAVING TYPE 2

FOOTWAY CONSTRUCTION - PAVING TYPE 2

FOOTWAY CONSTRUCTION - PAVING TYPE 2

FOOTWAY CONSTRUCTION - PAVING TYPE 2

FOOTWAY CONSTRUCTION - PAVING TYPE 2

FOOTWAY CONSTRUCTION - PAVING TYPE 2

FOOTWAY CONSTRUCTION - PAVING TYPE 2

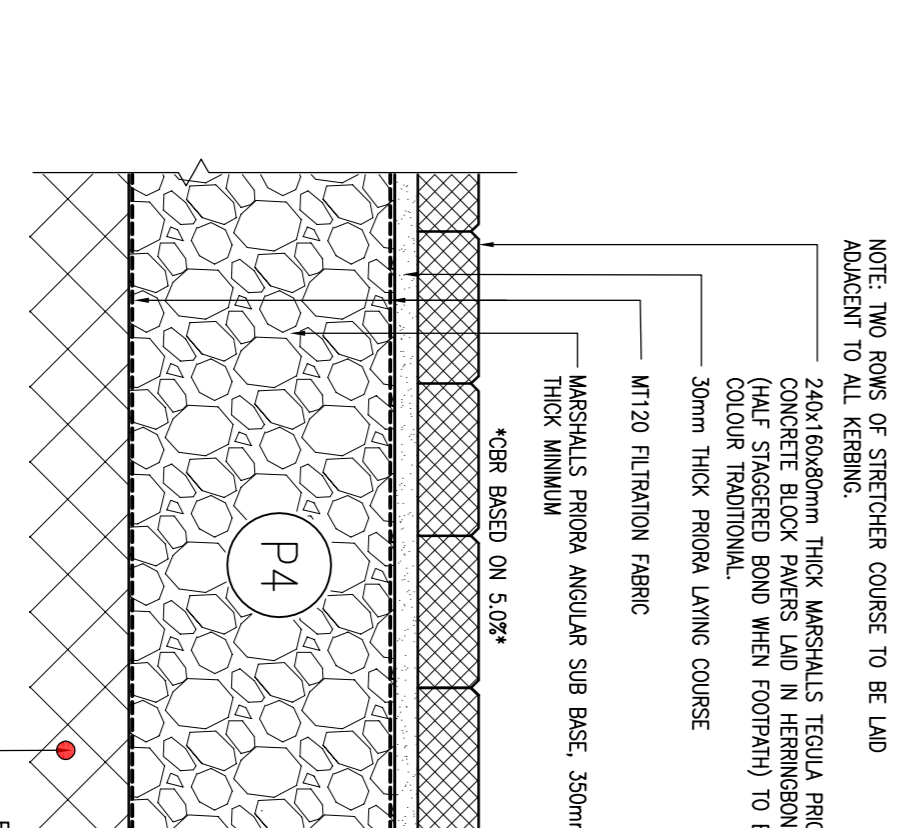
FOOTWAY CONSTRUCTION - PAVING TYPE 2

FOOTWAY CONSTRUCTION - PAVING TYPE 2

FOOTWAY CONSTRUCTION - PAVING TYPE 2

FOOTWAY CONSTRUCTION - PAVING TYPE 2

FOOTWAY CONSTRUCTION - PAVING TYPE 2



PERMEABLE BLOCK PAVING CONSTRUCTION PARKING BAYS / DRIVEWAYS PAVING TYPE P4

PERMEABLE BLOCK PAVING CONSTRUCTION PARKING BAYS / DRIVEWAYS PAVING TYPE P4

PERMEABLE BLOCK PAVING CONSTRUCTION PARKING BAYS / DRIVEWAYS PAVING TYPE P4

PERMEABLE BLOCK PAVING CONSTRUCTION PARKING BAYS / DRIVEWAYS PAVING TYPE P4

PERMEABLE BLOCK PAVING CONSTRUCTION PARKING BAYS / DRIVEWAYS PAVING TYPE P4

PERMEABLE BLOCK PAVING CONSTRUCTION PARKING BAYS / DRIVEWAYS PAVING TYPE P4

PERMEABLE BLOCK PAVING CONSTRUCTION PARKING BAYS / DRIVEWAYS PAVING TYPE P4

PERMEABLE BLOCK PAVING CONSTRUCTION PARKING BAYS / DRIVEWAYS PAVING TYPE P4

PERMEABLE BLOCK PAVING CONSTRUCTION PARKING BAYS / DRIVEWAYS PAVING TYPE P4

PERMEABLE BLOCK PAVING CONSTRUCTION PARKING BAYS / DRIVEWAYS PAVING TYPE P4

PERMEABLE BLOCK PAVING CONSTRUCTION PARKING BAYS / DRIVEWAYS PAVING TYPE P4

PERMEABLE BLOCK PAVING CONSTRUCTION PARKING BAYS / DRIVEWAYS PAVING TYPE P4

PERMEABLE BLOCK PAVING CONSTRUCTION PARKING BAYS / DRIVEWAYS PAVING TYPE P4

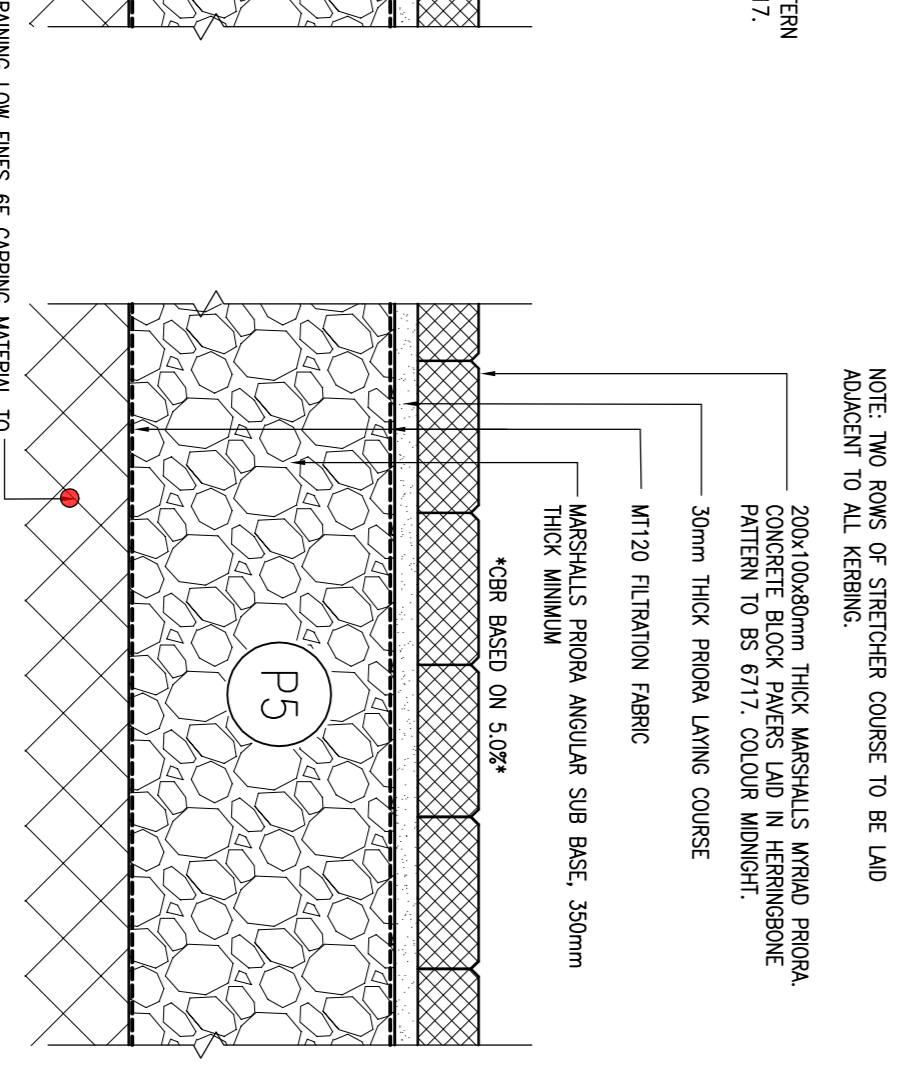
PERMEABLE BLOCK PAVING CONSTRUCTION PARKING BAYS / DRIVEWAYS PAVING TYPE P4

PERMEABLE BLOCK PAVING CONSTRUCTION PARKING BAYS / DRIVEWAYS PAVING TYPE P4

PERMEABLE BLOCK PAVING CONSTRUCTION PARKING BAYS / DRIVEWAYS PAVING TYPE P4

PERMEABLE BLOCK PAVING CONSTRUCTION PARKING BAYS / DRIVEWAYS PAVING TYPE P4

PERMEABLE BLOCK PAVING CONSTRUCTION PARKING BAYS / DRIVEWAYS PAVING TYPE P4



PERMEABLE BLOCK PAVING CONSTRUCTION ROAD BANDS PAVING TYPE P5

PERMEABLE BLOCK PAVING CONSTRUCTION ROAD BANDS PAVING TYPE P5

PERMEABLE BLOCK PAVING CONSTRUCTION ROAD BANDS PAVING TYPE P5

PERMEABLE BLOCK PAVING CONSTRUCTION ROAD BANDS PAVING TYPE P5

PERMEABLE BLOCK PAVING CONSTRUCTION ROAD BANDS PAVING TYPE P5

PERMEABLE BLOCK PAVING CONSTRUCTION ROAD BANDS PAVING TYPE P5

PERMEABLE BLOCK PAVING CONSTRUCTION ROAD BANDS PAVING TYPE P5

PERMEABLE BLOCK PAVING CONSTRUCTION ROAD BANDS PAVING TYPE P5

PERMEABLE BLOCK PAVING CONSTRUCTION ROAD BANDS PAVING TYPE P5

PERMEABLE BLOCK PAVING CONSTRUCTION ROAD BANDS PAVING TYPE P5

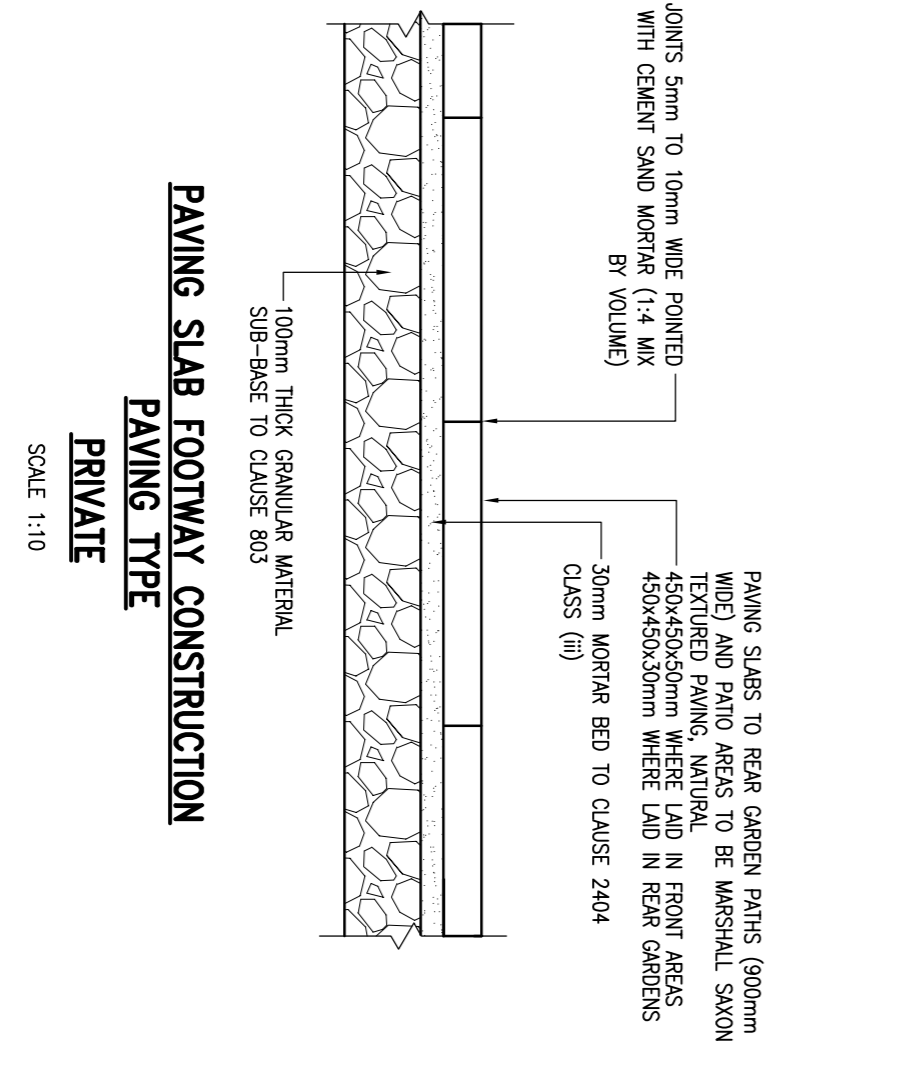
PERMEABLE BLOCK PAVING CONSTRUCTION ROAD BANDS PAVING TYPE P5

PERMEABLE BLOCK PAVING CONSTRUCTION ROAD BANDS PAVING TYPE P5

PERMEABLE BLOCK PAVING CONSTRUCTION ROAD BANDS PAVING TYPE P5

PERMEABLE BLOCK PAVING CONSTRUCTION ROAD BANDS PAVING TYPE P5

PERMEABLE BLOCK PAVING CONSTRUCTION ROAD BANDS PAVING TYPE P5



PAVING SLAB FOOTWAY CONSTRUCTION PRIVATE PAVING TYPE P3A

PAVING SLAB FOOTWAY CONSTRUCTION PRIVATE PAVING TYPE P3A

PAVING SLAB FOOTWAY CONSTRUCTION PRIVATE PAVING TYPE P3A

PAVING SLAB FOOTWAY CONSTRUCTION PRIVATE PAVING TYPE P3A

PAVING SLAB FOOTWAY CONSTRUCTION PRIVATE PAVING TYPE P3A

PAVING SLAB FOOTWAY CONSTRUCTION PRIVATE PAVING TYPE P3A

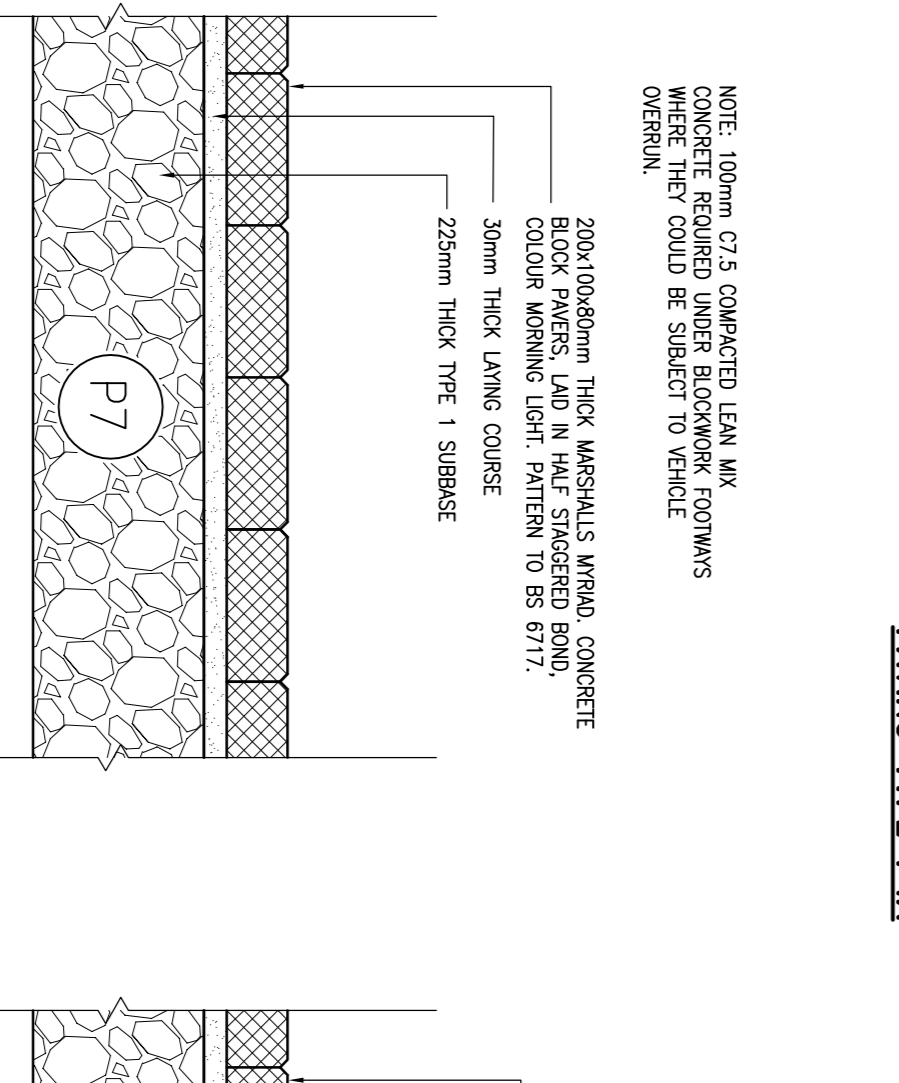
PAVING SLAB FOOTWAY CONSTRUCTION PRIVATE PAVING TYPE P3A

PAVING SLAB FOOTWAY CONSTRUCTION PRIVATE PAVING TYPE P3A

PAVING SLAB FOOTWAY CONSTRUCTION PRIVATE PAVING TYPE P3A

PAVING SLAB FOOTWAY CONSTRUCTION PRIVATE PAVING TYPE P3A

PAVING SLAB FOOTWAY CONSTRUCTION PRIVATE PAVING TYPE P3A



PERMEABLE BLOCK PAVING CONSTRUCTION PARKING COURTS / PRIVATE DRIVES PAVING TYPE P3B

PERMEABLE BLOCK PAVING CONSTRUCTION PARKING COURTS / PRIVATE DRIVES PAVING TYPE P3B

PERMEABLE BLOCK PAVING CONSTRUCTION PARKING COURTS / PRIVATE DRIVES PAVING TYPE P3B

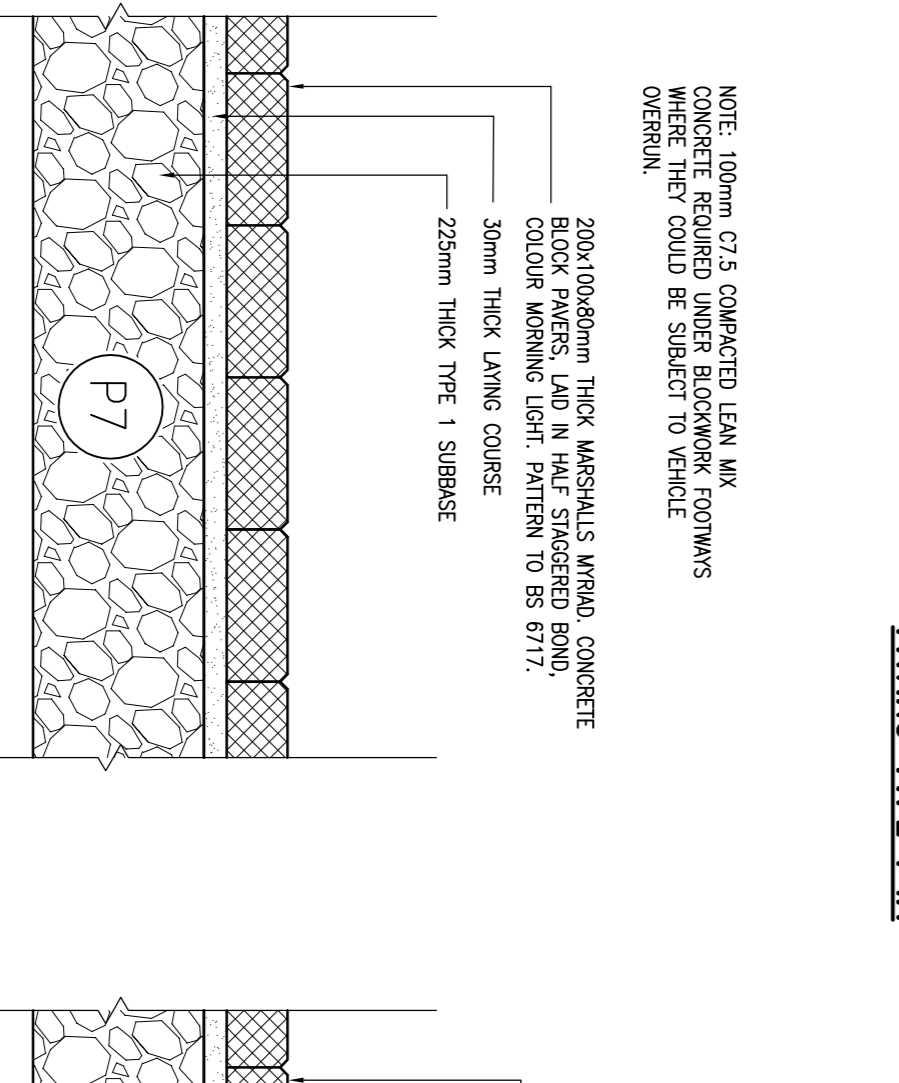
PERMEABLE BLOCK PAVING CONSTRUCTION PARKING COURTS / PRIVATE DRIVES PAVING TYPE P3B

PERMEABLE BLOCK PAVING CONSTRUCTION PARKING COURTS / PRIVATE DRIVES PAVING TYPE P3B

PERMEABLE BLOCK PAVING CONSTRUCTION PARKING COURTS / PRIVATE DRIVES PAVING TYPE P3B

PERMEABLE BLOCK PAVING CONSTRUCTION PARKING COURTS / PRIVATE DRIVES PAVING TYPE P3B

PERMEABLE BLOCK PAVING CONSTRUCTION PARKING COURTS / PRIVATE DRIVES PAVING TYPE P3B



PERMEABLE BLOCK PAVING CONSTRUCTION PARKING COURTS / PRIVATE DRIVES PAVING TYPE P3B

PERMEABLE BLOCK PAVING CONSTRUCTION PARKING COURTS / PRIVATE DRIVES PAVING TYPE P3B

PERMEABLE BLOCK PAVING CONSTRUCTION PARKING COURTS / PRIVATE DRIVES PAVING TYPE P3B

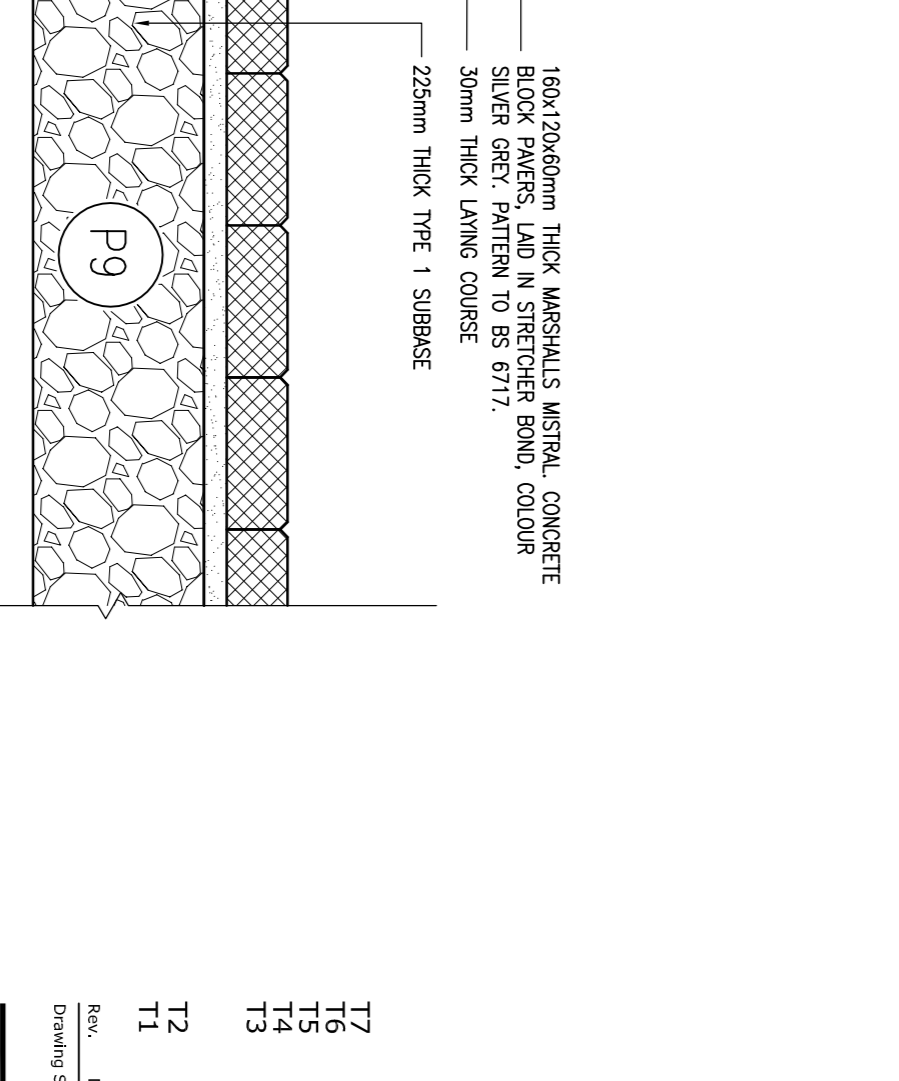
PERMEABLE BLOCK PAVING CONSTRUCTION PARKING COURTS / PRIVATE DRIVES PAVING TYPE P3B

PERMEABLE BLOCK PAVING CONSTRUCTION PARKING COURTS / PRIVATE DRIVES PAVING TYPE P3B

PERMEABLE BLOCK PAVING CONSTRUCTION PARKING COURTS / PRIVATE DRIVES PAVING TYPE P3B

PERMEABLE BLOCK PAVING CONSTRUCTION PARKING COURTS / PRIVATE DRIVES PAVING TYPE P3B

PERMEABLE BLOCK PAVING CONSTRUCTION PARKING COURTS / PRIVATE DRIVES PAVING TYPE P3B

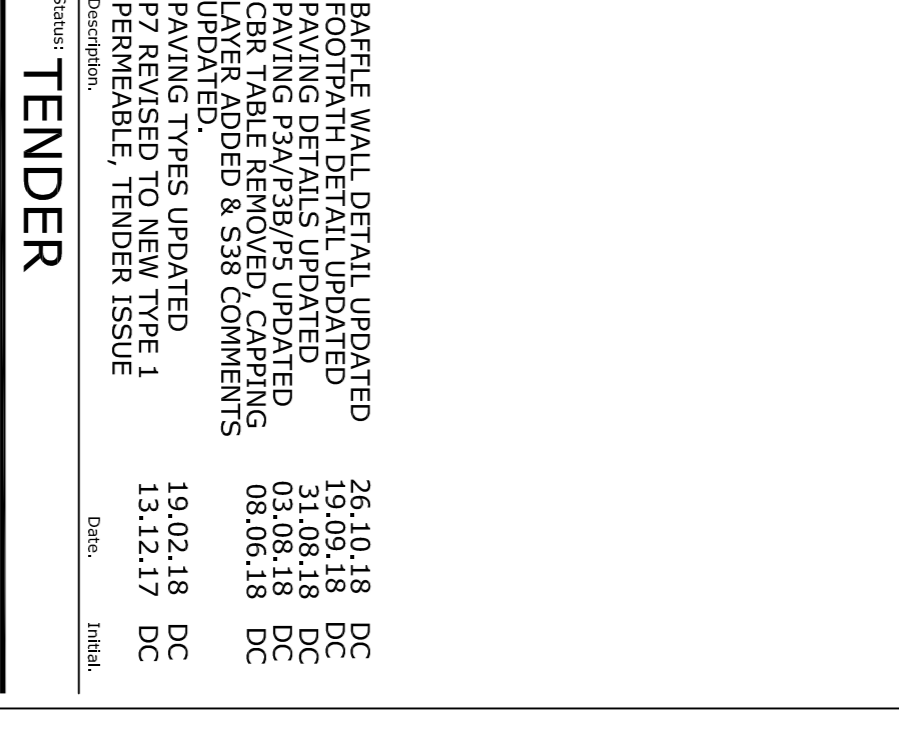


BLOCK PAVING CONSTRUCTION FOOTWAYS PAVING TYPE P7

BLOCK PAVING CONSTRUCTION FOOTWAYS PAVING TYPE P7

BLOCK PAVING CONSTRUCTION FOOTWAYS PAVING TYPE P7

BLOCK PAVING CONSTRUCTION FOOTWAYS PAVING TYPE P7



BLOCK PAVING CONSTRUCTION FOOTWAYS PAVING TYPE P9

BLOCK PAVING CONSTRUCTION FOOTWAYS PAVING TYPE P9

BLOCK PAVING CONSTRUCTION FOOTWAYS PAVING TYPE P9

BLOCK PAVING CONSTRUCTION FOOTWAYS PAVING TYPE P9

BLOCK PAVING CONSTRUCTION FOOTWAYS PAVING TYPE P9

BLOCK PAVING CONSTRUCTION FOOTWAYS PAVING TYPE P9

BLOCK PAVING CONSTRUCTION FOOTWAYS PAVING TYPE P9

BLOCK PAVING CONSTRUCTION FOOTWAYS PAVING TYPE P9

BLOCK PAVING CONSTRUCTION FOOTWAYS PAVING TYPE P9

BLOCK PAVING CONSTRUCTION FOOTWAYS PAVING TYPE P9

BLOCK PAVING CONSTRUCTION FOOTWAYS PAVING TYPE P9

BLOCK PAVING CONSTRUCTION FOOTWAYS PAVING TYPE P9

BLOCK PAVING CONSTRUCTION FOOTWAYS PAVING TYPE P9

BLOCK PAVING CONSTRUCTION FOOTWAYS PAVING TYPE P9

BLOCK PAVING CONSTRUCTION FOOTWAYS PAVING TYPE P9

BLOCK PAVING CONSTRUCTION FOOTWAYS PAVING TYPE P9

BLOCK PAVING CONSTRUCTION FOOTWAYS PAVING TYPE P9

BLOCK PAVING CONSTRUCTION FOOTWAYS PAVING TYPE P9

BLOCK PAVING CONSTRUCTION FOOTWAYS PAVING TYPE P9

BLOCK PAVING CONSTRUCTION FOOTWAYS PAVING TYPE P9

BLOCK PAVING CONSTRUCTION FOOTWAYS PAVING TYPE P9

BLOCK PAVING CONSTRUCTION FOOTWAYS PAVING TYPE P9

BLOCK PAVING CONSTRUCTION FOOTWAYS PAVING TYPE P9