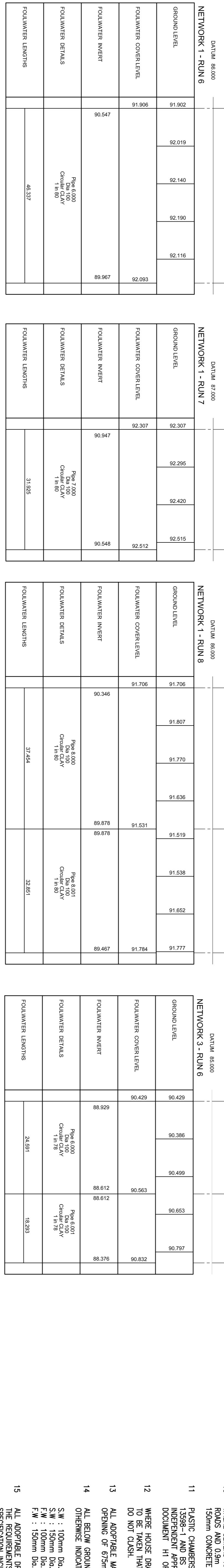
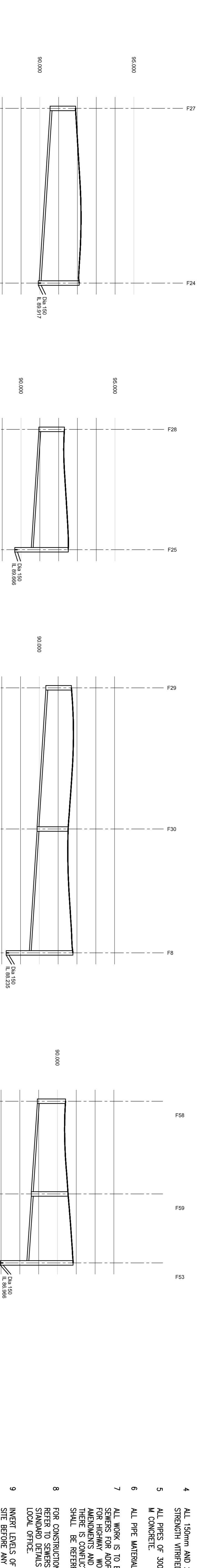
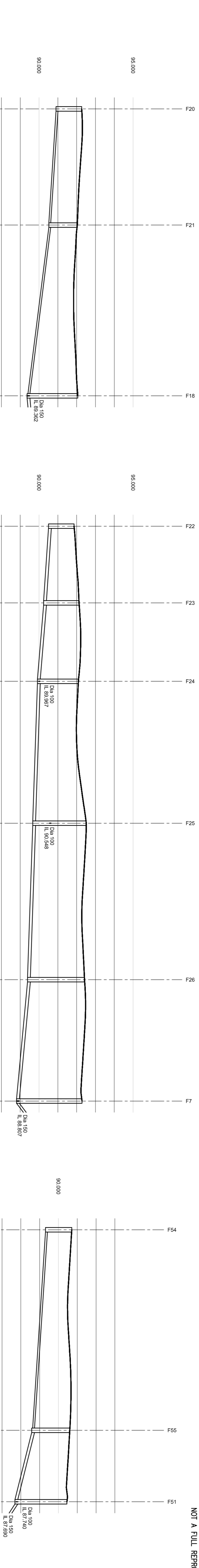


**NOTES**

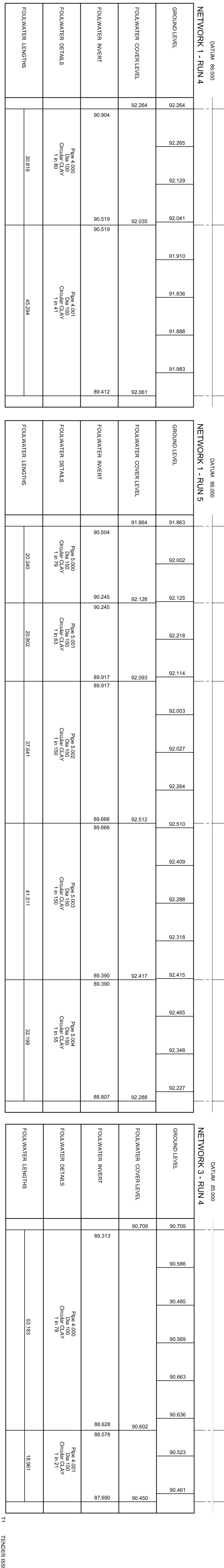
- 1 THIS DRAWING IS COPYRIGHT.
- 2 THE CONTRACTOR AND HIS SUBCONTRACTOR ARE TO VERIFY ALL DIMENSIONS ON SITE PRIOR TO MAKING SHOP DRAWINGS OR COMMENCING MANUFACTURE.
- 3 DO NOT SCALE THIS DRAWING. THE CONTRACTOR IS TO BRING TO THE NOTICE OF THE ENGINEER ANY DISCREPANCIES COMPARED IN THIS DRAWING FROM TO WORK COMMENCEMENT.
- 4 ALL 150mm AND 225mm DIAMETER PIPES TO BE EXTRA STRENGTH VITRIFIED CLAY PIPES (SEE NOTE 15).
- 5 ALL PIPES OF 300mm DIAMETER OR GREATER TO BE CLASS M CONCRETE.
- 6 ALL PIPE MATERIALS TO BE CONSISTENT BETWEEN MANHOLES.
- 7 ALL WORK IS TO BE CARRIED OUT IN ACCORDANCE WITH SEWERS FOR ADOPTION 7TH EDITION, THE SPECIFICATION FOR HIGHWAY WORKS 1998 AND ALL SUBSEQUENT AMENDMENTS AND LOCAL AUTHORITY'S DESIGN GUIDE WHERE THERE IS A CONTRADICTION BETWEEN THE TWO DOCUMENTS THE ENGINEER SHALL BE REFERRED TO THE ENGINEER.
- 8 FOR CONSTRUCTION DETAILS OF MANHOLES AND SEWERS REFER TO SEWERS FOR ADOPTION AND UNDERTAKERS STANDARD DETAILS WHICH CAN BE OBTAINED FROM THE LOCAL OFFICE.
- 9 INVERT LEVELS OF EXISTING SEWERS TO BE CONFIRMED ON SITE BEFORE ANY SEWER WORK UNDERTAKEN. ANY DISCREPANCIES FOUND SHOULD BE NOTIFIED TO ENGINEERS.
- 10 WHERE SEWERS HAVE LESS THAN 1.2m OF COVER UNDER PAVES AND 0.2m UNDER WHERE PIPES ARE TO HAVE A 150mm CONCRETE BED AND SURROUND.
- 11 PLASTIC CHAMBERS AND RINGS SHALL COMPLY WITH BS EN 13398-1 AND BS EN 13398-2 OR HAVE EQUIVALENT INDEPENDENT APPROVAL, TO TABLE 11 OF APPROVED DOCUMENT H1 OF THE BUILDING REGULATIONS 2010.
- 12 WHERE HOUSE DRAINAGE IS TAKEN THROUGH BLOCK CARE IS TO BE TAKEN THAT FOUNDATION LEVELS AND DRAINAGE RUNS DO NOT CLASH.
- 13 ALL ADAPTABLE MANHOLES TO HAVE A MINIMUM CLEAR OPENINGS OF 675mmx375mm AND GRADE 0400 DNO.
- 14 ALL BELOW GROUND DRAINAGE TO BE 100mm UNLESS OTHERWISE INDICATED WITH A MIN. GRADIENT AS FOLLOWS:-  
 S/W : 100mm Dia. 1:100  
 S/W : 150mm Dia. 1:150  
 F/W : 100mm Dia. 1:80  
 F/W : 150mm Dia. 1:150
- 15 ALL ADAPTABLE DRAINAGE MATERIALS SHOULD COMPLY WITH THE REQUIREMENTS OF PART E CIVIL ENGINEERING SPECIFICATION INCLUDED WITH SEWERS FOR ADOPTION 7TH EDITION WHICH IS DERIVED FROM CSNI 7TH EDITION BUT IS NOT A FULL REPRODUCTION.



GROUND LEVEL	FOULWATER COVER LEVEL	FOULWATER INVERT	FOULWATER DETAILS	FOULWATER LENGTHS
91.902	92.019	90.547	Pipe 6.000 Circular Clay 1 in 80	46.337
92.019	92.140			
92.140	92.190			
92.190	92.116	89.967		
92.083				



GROUND LEVEL	FOULWATER COVER LEVEL	FOULWATER INVERT	FOULWATER DETAILS	FOULWATER LENGTHS
91.706	92.307	90.548	Pipe 7.000 Circular Clay 1 in 80	31.292
92.307	92.295			
92.295	92.420			
92.420	92.515			
92.515	92.612			
92.612	92.512	90.548		
92.512				
92.125	92.218			
92.218	92.114	89.917		
92.114	92.003	89.917		
92.003	92.027			
92.027	92.264			
92.264	92.512	89.666		
92.512	92.510	89.666		
92.510	92.409			
92.409	92.288			
92.288	92.316			
92.316	92.415	89.390		
92.415	92.465	89.390		
92.465	92.348			
92.348	92.227			
92.227	92.288	88.807		
92.288				



GROUND LEVEL	FOULWATER COVER LEVEL	FOULWATER INVERT	FOULWATER DETAILS	FOULWATER LENGTHS
91.863	92.002	90.504	Pipe 5.000 Circular Clay 1 in 80	37.841
92.002	92.125			
92.125	92.218			
92.218	92.114	89.917		
92.114	92.003	89.917		
92.003	92.027			
92.027	92.264			
92.264	92.512	89.666		
92.512	92.510	89.666		
92.510	92.409			
92.409	92.288			
92.288	92.316			
92.316	92.415	89.390		
92.415	92.465	89.390		
92.465	92.348			
92.348	92.227			
92.227	92.288	88.807		
92.288				



GROUND LEVEL	FOULWATER COVER LEVEL	FOULWATER INVERT	FOULWATER DETAILS	FOULWATER LENGTHS
90.709	90.709	89.313	Pipe 4.000 Circular Clay 1 in 75	53.183
90.709	90.686			
90.686	90.485			
90.485	90.569			
90.569	90.663			
90.663	90.636			
90.636	90.602	88.628		
90.602	88.678	88.678		
88.678	90.450	87.690		
90.450	90.623			
90.623	90.461			
90.461	90.523			
90.523	90.461			