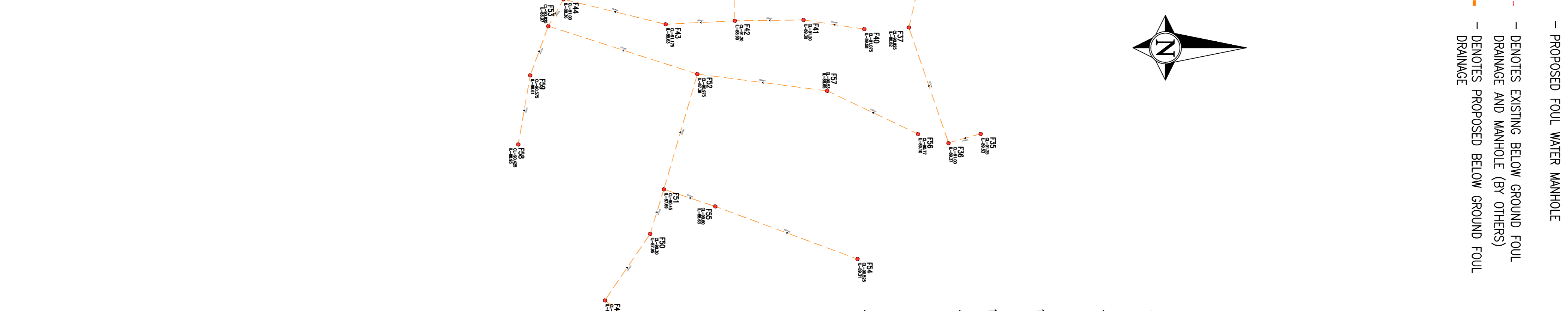


Manhole Number	Coordinates	Depth To Datum	Comments	Code	Event	Event Invert	Manhole Size	Type
F1	E. 43791472 N. 22545619	1280		0	1000	91260	1200	E
F2	E. 43791497 N. 22545704	1207		0	1000	90291	1200	B
F3	E. 43792142 N. 22545829	1280		0	1001	90134	1200	B
F4	E. 43792148 N. 22545819	2275		0	1002	89248	1200	B
F5	E. 43792409 N. 22545833	2813		0	1004	89243	1200	B
F6	E. 43791222 N. 22545743	3010		0	1002	89218	1200	A
F7	E. 43790114 N. 22545702	3231		0	1006	88207	1200	A
F8	E. 43790110 N. 22545708	3299		0	1007	88205	1200	A
F9	E. 43790204 N. 22545600	3230		0	1008	88203	1200	A
F10	E. 43792304 N. 22545708	3299		0	1009	87280	1200	A
F11	E. 43790228 N. 22545707	1280		0	2000	90240	1200	E
F12	E. 43792111 N. 22545778	1481		0	2001	90254	1200	E
F13	E. 43791428 N. 22545813	1109		0	2002	90191	1200	B
F14	E. 43792111 N. 22545778	1280		0	3000	90240	1200	E
F15	E. 43790228 N. 22545708	1280		0	3001	90213	1200	E
F16	E. 43790228 N. 22545708	1280		0	3002	90110	1200	E
F17	E. 43791108 N. 22545723	1245		0	3003	89242	1200	B
F18	E. 43790228 N. 22545708	2489		0	3004	89242	1200	B
F19	E. 43790228 N. 22545708	2800		0	3005	89112	1200	B
F20	E. 43790228 N. 22545708	9224		0	3006	89112	1200	B

Manhole Number	Coordinates	Depth To Datum	Comments	Code	Event	Event Invert	Manhole Size	Type
F21	E. 43791204 N. 22545813	1418		1	4000	90319	1200	E
F22	E. 43790228 N. 22545708	1219		0	4001	90319	1200	E
F23	E. 43792142 N. 22545829	1238		0	4000	90345	1200	B
F24	E. 43792302 N. 22545739	2208		0	4001	90345	1200	B
F25	E. 43791204 N. 22545813	2488		0	4002	89247	1200	B
F26	E. 43790114 N. 22545702	2878		0	4004	88230	1200	B
F27	E. 43790110 N. 22545708	3297		0	4000	90147	1200	E
F28	E. 43792111 N. 22545778	1280		0	7000	90147	1200	E
F29	E. 43790228 N. 22545708	1280		0	8000	90146	1200	E
F30	E. 43792304 N. 22545708	1280		0	8000	89278	1200	B
F35	E. 43790228 N. 22545708	1405		0	8001	88278	1200	E
F36	E. 43792111 N. 22545778	1280		0	1000	88232	1200	E
F37	E. 43792111 N. 22545778	1280		0	1001	88275	1200	B
F38	E. 43792111 N. 22545778	1280		0	1002	88232	1200	B
F40	E. 43792111 N. 22545778	1480		0	1000	89232	1200	E
F41	E. 43792111 N. 22545778	1480		0	1001	89232	1200	E
F42	E. 43792111 N. 22545778	2110		0	1002	88244	1200	B
F43	E. 43792111 N. 22545778	2389		0	1003	88244	1200	B
F44	E. 43792111 N. 22545778	3389		0	1004	88244	1200	B
F45	E. 43792111 N. 22545778	3382		0	1004	88244	1200	B

Manhole Number	Coordinates	Depth To Datum	Comments	Code	Event	Event Invert	Manhole Size	Type
F46	E. 43792111 N. 22545778	1480		0	2000	90142	1200	E
F47	E. 43791204 N. 22545813	1280		0	3000	88279	1200	E
F48	E. 43790228 N. 22545708	1280		0	3001	88218	1200	B
F49	E. 43790228 N. 22545708	1280		0	3002	88218	1200	B
F50	E. 43790228 N. 22545708	2344		0	3002	88218	1200	B
F51	E. 43790228 N. 22545708	2410		0	3003	87291	1200	B
F52	E. 43790228 N. 22545708	3449		0	3003	87291	1200	B
F53	E. 43790228 N. 22545708	3716		0	3005	86296	1200	A
F54	E. 43792111 N. 22545778	1117		0	4000	88218	1200	E

Manhole Number	Coordinates	Depth To Datum	Comments	Code	Event	Event Invert	Manhole Size	Type
F55	E. 43790228 N. 22545708	1480		0	4001	88278	1200	B
F56	E. 43790228 N. 22545708	1480		0	4001	88278	1200	B
F57	E. 43791404 N. 22541475	1584		0	5000	88248	1200	B
F58	E. 43790228 N. 22545708	1480		0	6000	88212	1200	B
F59	E. 43790228 N. 22545708	1881		0	6001	88212	1200	B



LEGEND

- F1 - PROPOSED FOUL WATER MANHOLE
- DENOTES EXISTING BELOW GROUND FOUL DRAINAGE AND MANHOLE (BY OTHERS)
- DENOTES PROPOSED BELOW GROUND FOUL DRAINAGE

NOTES

- 1 THIS DRAWING IS COPYRIGHT.
- 2 THE CONTRACTOR AND HIS SUBCONTRACTOR ARE TO VERIFY ALL DIMENSIONS ON SITE PRIOR TO MAKING SHOP DRAWINGS OR COMMENCING MANUFACTURE.
- 3 DO NOT SCALE THIS DRAWING. THE CONTRACTOR IS TO BRING TO THE CONTRACTOR'S ATTENTION ANY DISCREPANCIES CONTAINED IN THIS DRAWING PRIOR TO WORK COMMENCEMENT.
- 4 ALL 150mm AND 225mm DIAMETER PIPES TO BE EXTRA STRENGTH VITRIFIED CLAY PIPES (SEE NOTE 15).
- 5 ALL PIPES OF 300mm DIAMETER OR GREATER TO BE CLASS M CONCRETE.
- 6 ALL PIPE MATERIALS TO BE CONSISTENT BETWEEN MANHOLES.
- 7 ALL WORK IS TO BE CARRIED OUT IN ACCORDANCE WITH SEWERS FOR ADOPTION 7TH EDITION, THE SPECIFICATION FOR HIGHWAY WORKS 1995 AND ALL SUBSEQUENT AMENDMENTS AND LOCAL AUTHORITIES DESIGN GUIDE WHERE APPLICABLE. THE CONTRACTOR SHALL BE RESPONSIBLE FOR OBTAINING THESE DOCUMENTS. THE DRAWING SHALL BE REFERRED TO THE ENGINEER.
- 8 FOR CONSTRUCTION DETAILS OF MANHOLES AND SEWERS REFER TO SEWERS FOR ADOPTION AND UNDERLAKERS STANDARD DETAILS WHICH CAN BE OBTAINED FROM THE LOCAL OFFICE.
- 9 INVERT LEVELS OF EXISTING SEWERS TO BE CONFIRMED ON SITE BEFORE ANY SEWER WORK UNDERTAKEN. ANY DISCREPANCIES FOUND SHOULD BE NOTIFIED TO ENGINEERS.
- 10 WHERE SEWERS HAVE LESS THAN 1.2m OF COVER UNDER ROADS AND 0.9m COVER ELSEWHERE PIPES ARE TO HAVE A 150mm CONCRETE BED AND SURROUND.
- 11 PLASTIC CHAMBERS AND RINGS SHALL COMPLY WITH BS EN 13598-1 AND BS EN 13598-2 OR HAVE EQUIVALENT INDEPENDENT APPROVAL. TO TABLE 11 OF APPROVED DOCUMENT H1 OF THE BUILDING REGULATIONS 2010.
- 12 WHERE HOUSE DRAINAGE IS TAKEN THROUGH BLOCK CARE IS TO BE TAKEN THAT FOUNDATION LEVELS AND DRAINAGE RUNS DO NOT CLASH.
- 13 ALL ADAPTABLE MANHOLES TO HAVE A MINIMUM CLEAR OPENING OF 675mmx75mm AND GRADE D400 UNO.
- 14 ALL BELOW GROUND DRAINAGE TO BE 100mm⁴ UNLESS OTHERWISE INDICATED WITH A MIN. GRADIENT AS FOLLOWS--
S.W. : 100mm Dia. 1:100
S.W. : 150mm Dia. 1:150
F.W. : 100mm Dia. 1:80
F.W. : 150mm Dia. 1:150
- 15 ALL ADAPTABLE DRAINAGE MATERIALS SHOULD COMPLY WITH THE REQUIREMENTS OF PART E CIVIL ENGINEERING SPECIFICATION INCLUDED WITH SEWERS FOR ADOPTION 7TH EDITION WHICH IS DRAWN FROM CSEW 7TH EDITION BUT IS NOT A FULL REPRODUCTION.

HEALTH & SAFETY:

ALL WORKS TO BE CARRIED OUT BY A CONTRACTOR COMPETENT TO UNDERTAKE THE CONSTRUCTION OF WORKS AS INDICATED ON THIS DRAWING. THIS DRAWING IS TO BE READ IN CONJUNCTION WITH THE JOB SPECIFIC RISK ASSESSMENT. THE HAZARDS NOTED ARE IN ADDITION TO THE NORMAL HAZARDS AND RISKS FACED BY A COMPETENT CONTRACTOR WHEN DEALING WITH THE TYPE OF WORKS DETAILED ON THIS DRAWING.

T2 MANHOLES UPDATED 18.12.17 DC
T1 TENDER ISSUE 14.12.17 DC

TENDER
Drawn: D. Thompson Date: 18.12.17
Checked: J. Smith

Scale: **MANHOLE SCHEDULES**

Project: NTS
Drawing: DC
Revision: T2

Drawn: NTS
Checked: DC
Revision: T2

147901A-3257

REUBY & STAGG LTD.
CONSULTING CIVIL & STRUCTURAL ENGINEERS
Surrey
KT16 9SN

Crest
TECHNICAL SERVICES
Tel: 01932 580 333
Fax: 01932 356 992
www.crest-engineers.com

ELMSBROOK, BICESTER
Phase 3 & 4

Project: NTS
Drawing: DC
Revision: T2