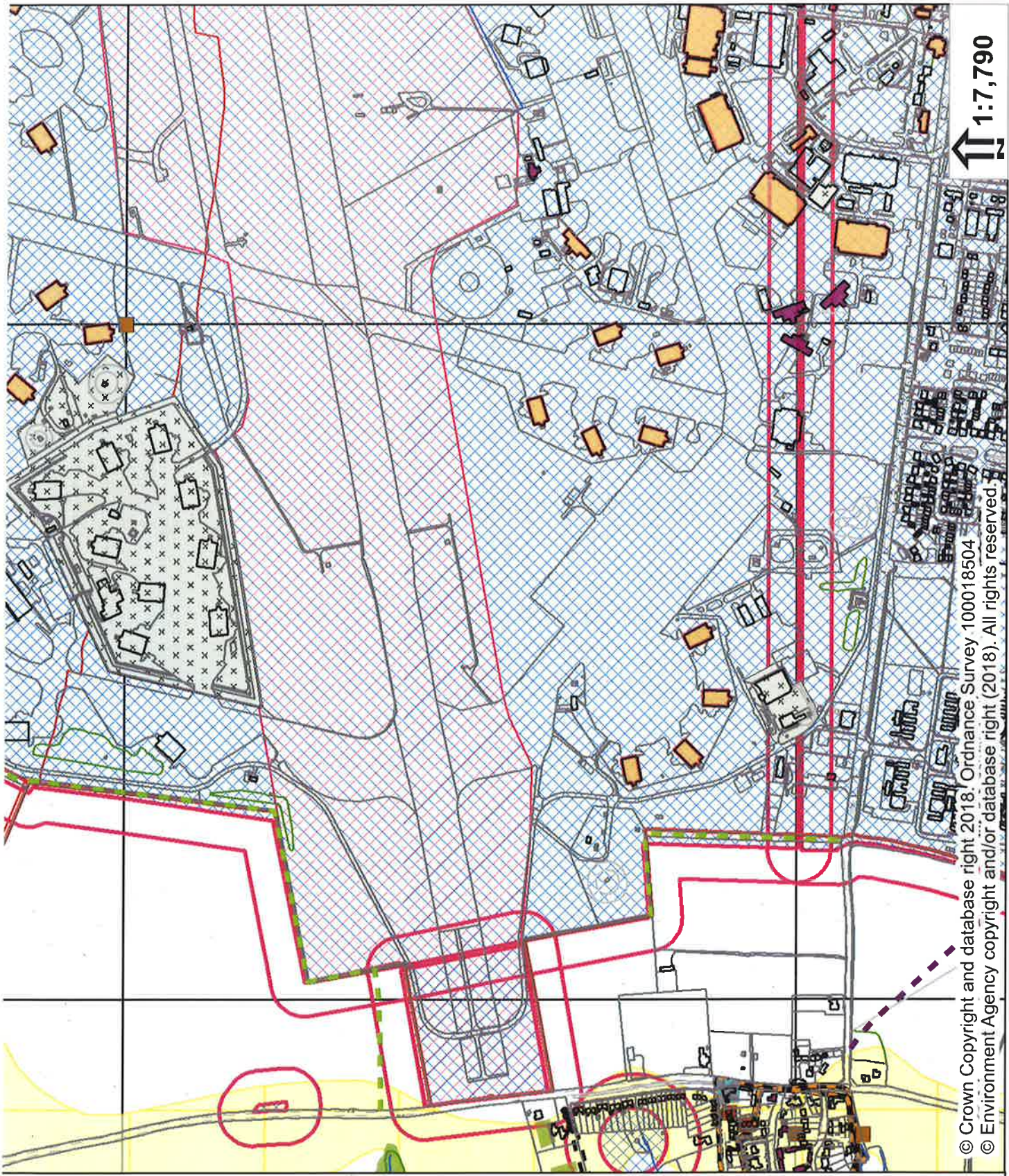


1:7,790

© Crown Copyright and database right 2018. Ordnance Survey 100018504  
 © Environment Agency copyright and/or database right (2018). All rights reserved.

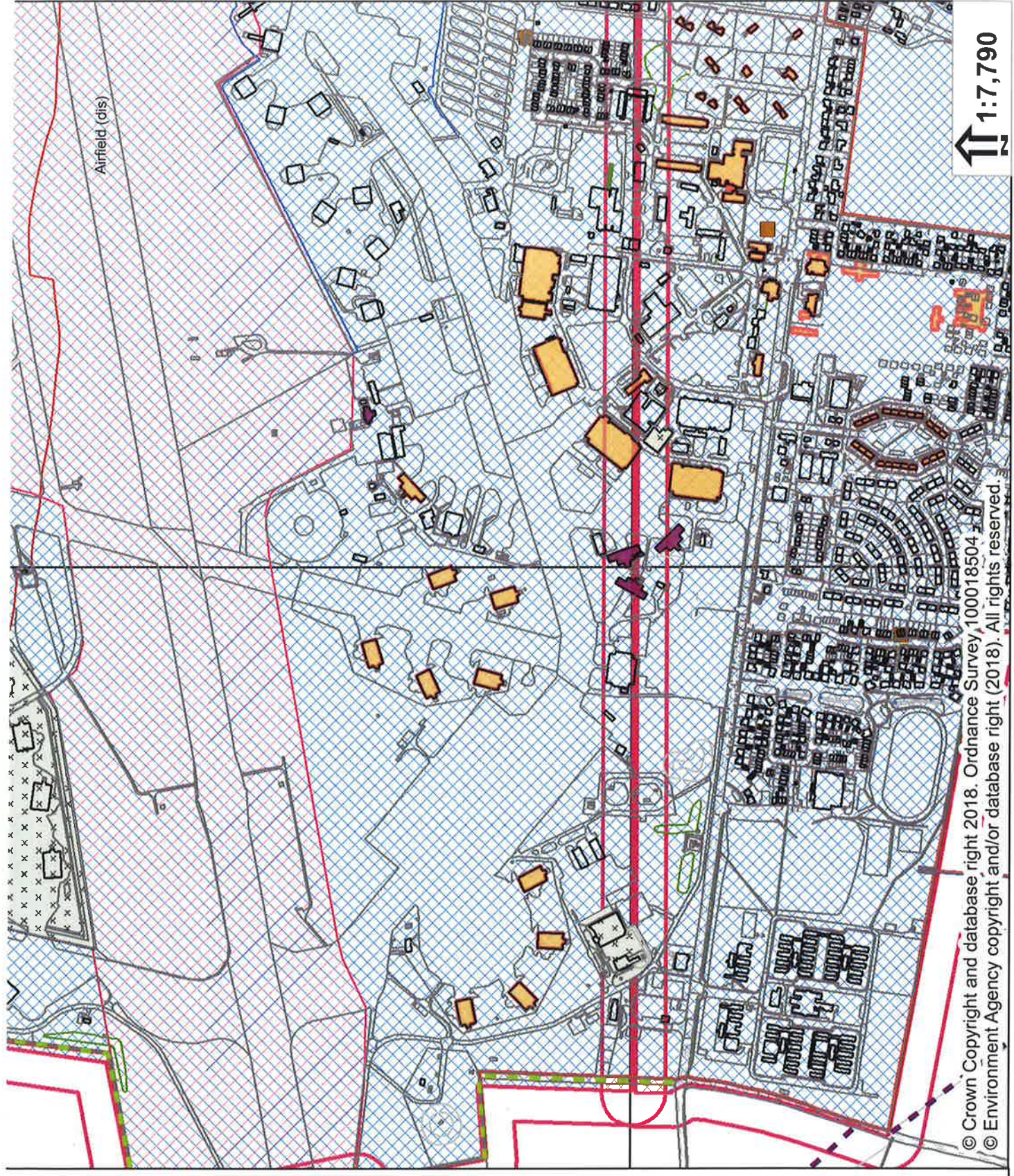
- Public Broadway
- Residential Byway
- Byway Open to all Traffic
- SWIFT\_RECORDS
- PROTECTED\_AND\_NOTABLE\_SPECIES
- PROTECTED\_SPECIES\_BUFFER
- ROAD\_VERGE\_NATURE\_RESERVES
- EIL\_TEXT
- ASSETS OF COMMUNITY VALUE
- Area TPOs
- Circle TPOs
- TPO Trees
- Woodland TPOs
- LISTED BUILDINGS**
- GRADE
- I\*
- II\*
- DL
- CURTLAGE LISTING
- LOCALLY\_LISTED\_BUILDINGS
- ARTICLE\_4
- ARCHAEOLOGICAL\_CONSTRAINT\_PRIORITY\_AREAS
- SCHEDULED\_ANCIENT\_MONUMENT
- EIL\_REGIONS
- PONDS\_MAPPING (INCLUDING GREAT CREATED NEWITS)
- NERO ACT S41 Habitats (Previously UKGAP PRIORITY HABITATS)
- REGISTERED\_COMMON\_LAND
- SPECIAL\_SITES\_OF\_SCIENTIFIC\_INTEREST
- SPECIAL\_AREAS\_OF\_CONSERVATION
- ANCIENT\_WOODLAND
- CONSERVATION\_AREAS
- DISTRICT\_WILDLIFE\_SITES
- LOCAL\_WILDLIFE\_SITES
- PROPOSED\_NEW\_LWS\_AND\_EXTENSIONS\_LWS
- LOCAL\_NATURE\_RESERVE
- PARKS\_AND\_GARDENS
- AREAS\_OF\_OUTSTANDING\_NATURAL\_BEAUTY
- RAILWAY\_TUNNEL
- HIGH\_PRESSURE\_GAS\_PIPELINES
- LGS\_POINTS
- LGS\_POLYGONS
- POTENTIALLY\_CONTAMINATED\_LAND**
- Buffer Distance
- X 0
- X 50
- EA\_LANDFILL\_SITES**
- Buffer Distance
- 0
- 250
- HISTORIC\_LANDFILL\_SITES\_10K
- BANK\_TOP\_WIDTH\_PLANNING
- CRT\_HOUSEHOLD\_AND\_MINOR\_SCALE\_DEVELOPMENTS
- CRT\_EIA\_AND\_MAJOR\_SCALE\_DEVELOPMENTS
- Flood Zone 3
- Flood Zone 2
- NAT\_FSR
- NAT\_DEFENCES
- NAT\_AREAS\_BENEFIT
- NAT\_CENTRELINES
- HS2\_SAFEGUARDING\_ZONES**
- Type
- Safeguarding Limits
- Sub-Surface
- Surfaces
- NATURALLY\_ELEVATED\_ARSENIC
- GREEN BELT
- CONSERVATION\_TARGET\_AREAS
- MINERAL\_CONSULTATION\_REGION
- Neighbourhood Development Plans**
- Details
- Neighbourhood Plan Area
- Important Amenity Green Spaces
- Local Green Spaces
- NATIONAL\_GRID\_REFERENCE
- WARDS
- PARISHES



1:7,790

© Crown Copyright and database right 2018. Ordnance Survey 100018504  
 © Environment Agency copyright and/or database right (2018). All rights reserved.

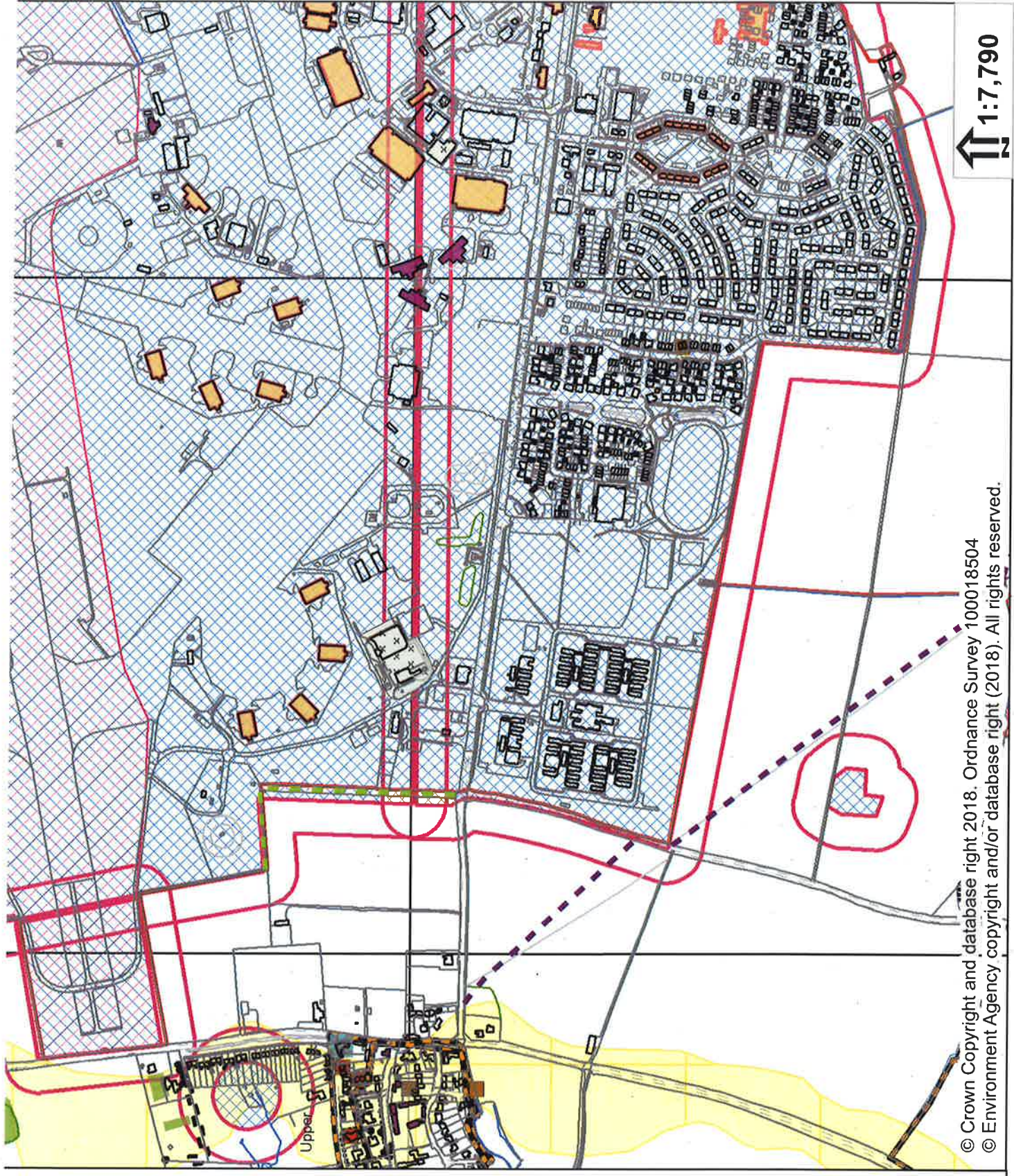
- Public Footway
- Restricted Byway
- Byway Open to all Traffic
- SWIFT\_RECORDS
- PROTECTED\_AND\_NOTABLE\_SPECIES
- PROTECTED\_SPECIES\_BUFFER
- ROAD\_VERGE\_NATURE\_RESERVES
- EIL\_TEXT
- ASSETS OF COMMUNITY VALUE
- Area TPOs
- Great TPOs
- TPO Lines
- Woodland TPOs
- LISTED BUILDINGS
- GRADE I
- GRADE II
- GRADE II\*
- GRADE DL
- CURTIAGE LISTING
- LOCALLY LISTED BUILDINGS
- ARTICLE 4
- ARCHAEOLOGICAL\_CONSTRAINT\_PRIORITY\_AREAS
- SCHEDULED ANCIENT MONUMENT
- EIL\_REGIONS
- PONDS MAPPING (INCLUDING GREAT CRESTED NEWTS)
- NERC ACT S41 Habitats (Previously UKBAP PRIORITY HABITATS)
- REGISTERED COMMON LAND
- SPECIAL\_SITES\_OF\_SCIENTIFIC\_INTEREST
- SPECIAL\_AREAS\_OF\_CONSERVATION
- ANCIENT WOODLAND
- CONSERVATION AREAS
- DISTRICT WILDLIFE\_SITES
- LOCAL WILDLIFE\_SITES
- PROPOSED\_NEW\_LWS\_AND\_EXTENSIONS\_LWS
- PARKS AND GARDENS
- LOCAL NATURE RESERVE
- AREAS\_OF\_OUTSTANDING\_NATURAL\_BEAUTY
- RAILWAY TUNNEL
- HIGH PRESSURE GAS PIPELINES
- LOS\_POINTS
- LOS POLYGONS
- POTENTIALLY\_CONTAMINATED\_LAND
- Buffer Distance 0
- Buffer Distance 50
- Buffer Distance 100
- EA LANDFILL\_SITES
- Buffer Distance 0
- Buffer Distance 250
- HISTORIC LANDFILL\_SITES\_10K
- BANK TOP WIDTH PLANNING
- CPT HOUSEHOLD AND MINOR SCALE DEVELOPMENTS
- CPT EA AND MAJOR SCALE DEVELOPMENTS
- Flood Zone 1
- Flood Zone 2
- NAT ZSA
- NAT DEFENCES
- NAT AREAS BENEFIT
- NAT CENTRELINES
- HS2 SAFEGUARDING\_ZONES
- Type Safeguarding Limits
- Surface Safeguarding
- Side-Surface Safeguarding
- NATURALLY ELEVATED ARSENIC
- GREEN BELT
- CONSERVATION\_TARGET\_AREAS
- MINERAL CONSULTATION REGION
- Neighbourhood Development Plans
- Neighbourhood Plan Area
- Important Arsenic Green Spaces
- Local Green Spaces
- NATIONAL\_GRID\_REFERENCE
- HAIUS
- PWSBIES



↑ 1:7,790

© Crown Copyright and database right 2018. Ordnance Survey, 100018504  
 © Environment Agency copyright and/or database right (2018). All rights reserved.

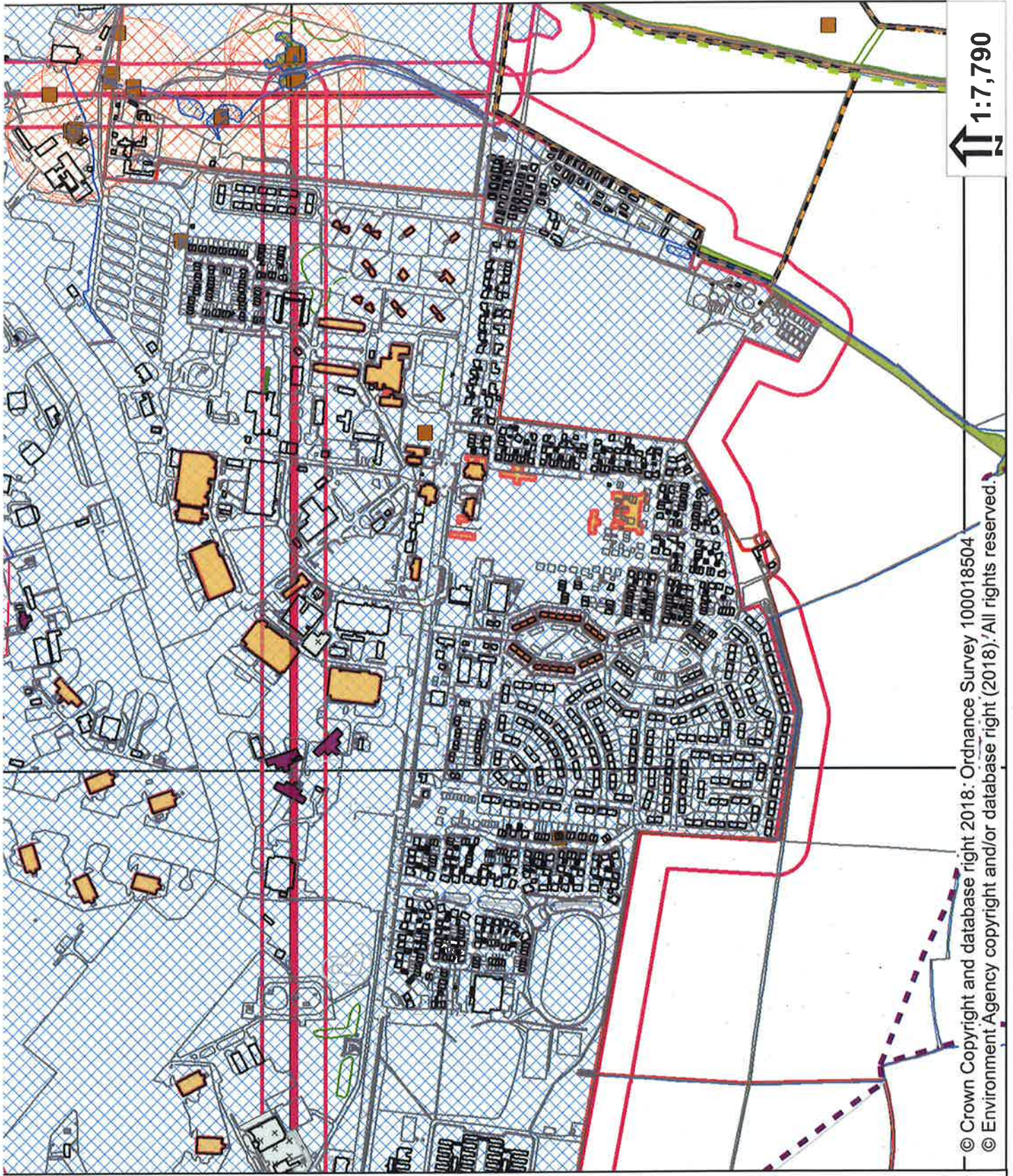
- Public Footway
- Restricted Byway
- Byway Open to all Traffic
- SWIFT\_RECORDS
- PROTECTED\_AND\_NOTABLE\_SPECIES
- PROTECTED\_SPECIES\_BUFFER
- ROAD\_VERGE\_NATURE\_RESERVES
- EIL\_TEXT
- ASSETS OF COMMUNITY VALUE
- Area TPOs
- Group TPOs
- TPO Trees
- Woodland TPOs
- LISTED BUILDINGS**
- GRADE
- I
- II
- DL
- QUARTILE LISTING
- LOCALLY\_LISTED\_BUILDINGS
- ARTICLE 4
- ARCHAEOLOGICAL\_CONSTRAINT\_PRIORITY\_AREAS
- SCHEDULED\_ANCIENT\_MONUMENT
- EIL\_REGIONS
- POUNDS\_MAPPING\_INCLUDING\_GREAT\_CRESTED\_NEWTS)
- REGIC ACT 541 Habitats (Previously UKBAP Priority Habitats)
- REGISTERED\_COMMON\_LAND
- SPECIAL\_SITES\_OF\_SCIENTIFIC\_INTEREST
- SPECIAL\_AREAS\_OF\_CONSERVATION
- ANCIENT\_WOODLAND
- CONSERVATION\_AREAS
- DISTRICT\_WILDLIFE\_SITES
- LOCAL\_WILDLIFE\_SITES
- PROPOSED\_NEW\_LWS\_AND\_EXTENSIONS\_LWS
- LOCAL\_NATURE\_RESERVE
- PARKLAND\_GARDENS
- AREAS\_OF\_OUTSTANDING\_NATURAL\_BEAUTY
- RAILWAY\_TUNNEL
- HIGH\_PRESSURE\_GAS\_PIPELINES
- LSS\_POINTS
- UGS\_POLYGONS
- POTENTIALLY CONTAMINATED LAND**
- Buffer Distance
- 0
- 50
- EA LANDFILL\_SITES**
- Buffer Distance
- 0
- 250
- HISTORIC\_LANDFILL\_SITES\_10K
- BANK\_TOP\_WIDTH\_PLANNING
- CRT\_HOUSEHOLD\_AND\_MINOR\_SCALE\_DEVELOPMENTS
- CRT\_EIM\_AND\_MAJOR\_SCALE\_DEVELOPMENTS
- Flood Zone 3
- Flood Zone 2
- NAT\_FRA
- NAT\_DEFENCES
- NAT\_AREAS\_BENEFIT
- NAT\_CENTRELINES
- HS2 SAFEGUARDING\_ZONES**
- Type
- Segregating Limits
- Sub-Surface
- Surface
- NATURALLY ELEVATED\_ARSENIC
- GREEN BELT
- CONSERVATION\_TARGET\_AREAS
- MINERAL\_CONSULTATION\_REGION
- Neighbourhood Development Plans**
- Details
- Neighbourhood Plan Area
- Important Amenity Green Spaces
- Local Green Spaces
- NATIONAL\_GRID\_REFERENCE
- WARDS
- PARISHES



↑ 1:7,790

- Public Footway
- Restricted Byway
- Byway Open to all Traffic
- SWIFT\_RECORDS
- PROTECTED\_AND\_NOTABLE\_SPECIES
- PROTECTED\_SPECIES\_BUFFER
- ROAD\_VERGE\_NATURE\_RESERVES
- EL\_TEXT
- ASSETS OF COMMUNITY VALUE
- Area TPOs
- Group TPOs
- TPO Trees
- Woodland TPOs
- LISTED BUILDINGS
- GRADE
- I\*
- I
- II
- DL
- CURTILAGE LISTING
- LOCALLY\_LISTED\_BUILDINGS
- ARTICLE\_4
- ARCHAEOLOGICAL\_CONSTRAINT\_PRIORITY\_AREAS
- SCHEDULED\_ANCIENT\_MONUMENT
- EIL\_REGIONS
- PONDS\_MAPPING\_INCLUDING\_GREAT\_CRESTED\_NEWTS
- REGULATED\_WATER\_CHANNELS\_PRIORITY\_HABITATS
- REGISTERED\_COMMON\_LAND
- SPECIAL\_SITES\_OF\_SCIENTIFIC\_INTEREST
- ANCIENT\_WOODLAND
- CONSERVATION\_AREAS
- DISTRICT\_WILDLIFE\_SITES
- LOCAL\_WILDLIFE\_SITES
- PROPOSED\_NEW\_LWS\_AND\_EXTENSIONS\_LWS
- LOCAL\_NATURE\_RESERVE
- PARKS\_AND\_GARDENS
- AREAS\_OF\_OUTSTANDING\_NATURAL\_BEAUTY
- RAILWAY\_TUNNELL
- HIGH\_PRESSURE\_GAS\_PIPELINES
- URS\_POINTS
- LOS\_POYONS
- POTENTIALLY\_CONTAMINATED\_LAND
- Buffer Distance
- EA\_LANDFILL\_SITES
- Buffer Distance
- 0
- 200
- HISTORIC\_LANDFILL\_SITES\_10K
- BANK\_TOP\_WIDTH\_PLANNING
- DRY\_HOUSEHOLD\_AND\_MINOR\_SCALE\_DEVELOPMENTS
- DRY\_EA\_AND\_MAJOR\_SCALE\_DEVELOPMENTS
- Flood Zone 3
- Flood Zone 2
- NAT\_FSA
- NAT\_DEFENCES
- NAT\_AREAS\_BENEFIT
- NAT\_CENTRELINES
- HS2\_SAFEGUARDING\_ZONES
- Type
- Safeguarding Limits
- Sub-Surface
- Barriers
- NATURALLY\_ELEVATED\_ARSENIC
- GREEN BELT
- CONSERVATION\_TARGET\_AREAS
- MINERAL\_CONSULTATION\_REGION
- Neighbourhood Development Plans
- Details
- Neighbourhood Plan Area
- Important Amenity Green Spaces
- Local Green Spaces
- NATIONAL\_GRID\_REFERENCE
- WARDS
- PARISHES

© Crown Copyright and database right 2018. Ordnance Survey 100018504  
 © Environment Agency copyright and/or database right (2018). All rights reserved.



1:7,790

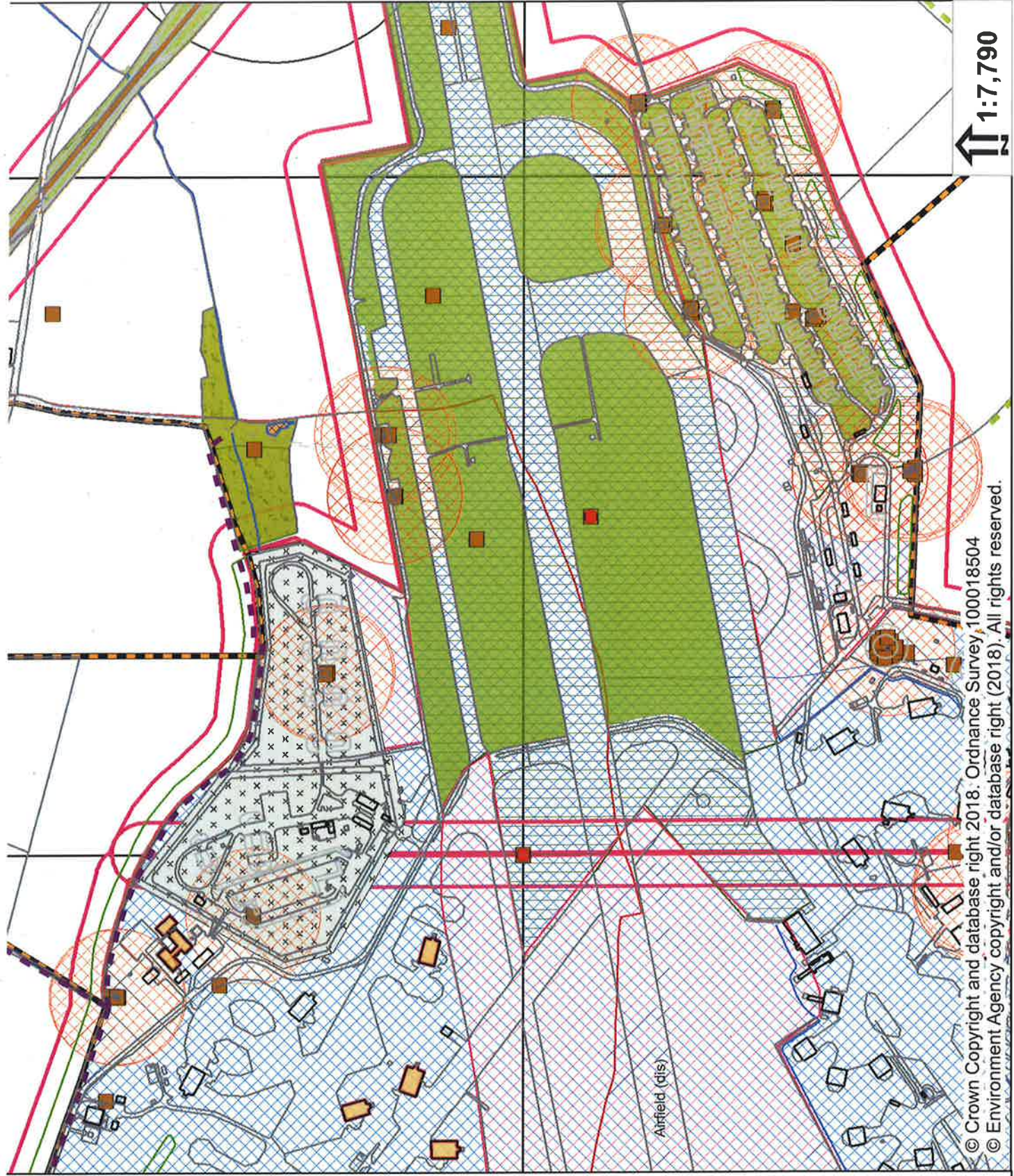
© Crown Copyright and database right 2018: Ordnance Survey 100018504  
 © Environment Agency copyright and/or database right (2018). All rights reserved.

- Public Footway
- Restricted Byway
- Byway Open to all Traffic
- SWIFT\_RECORDS
- PROTECTED AND NOTABLE SPECIES
- PROTECTED SPECIES BUFFER
- ROAD\_VERGE\_NATURE\_RESERVES
- EIL\_TEXT
- ASSETS OF COMMUNITY VALUE
- Area TPOs
- Group TPOs
- TPO Trees
- Woodland TPOs
- LISTED BUILDINGS
- GRADE
- I
- II
- III
- DL
- CURTLAGE LISTING
- LOCALLY LISTED BUILDINGS
- ARTICLE 4
- ARCHAEOLOGICAL\_CONSTRAINT\_PRIORITY\_AREAS
- SCHEDULED ANCIENT MONUMENT
- EIL\_REGIONS
- PONDS\_MAPPING (INCLUDING GREAT CRESTED NEWTS)
- REGICACT S41 Habitats (Previously UKAP Priority Habitats)
- REGISTERED COMMON LAND
- SPECIAL\_SITES\_OF\_SCIENTIFIC\_INTEREST
- SPECIAL AREAS OF CONSERVATION
- ANCIENT WOODLAND
- CONSERVATION AREAS
- DISTRICT WILDLIFE SITES
- LOCAL WILDLIFE SITES
- PROPOSED NEW LWS AND EXTENSIONS LWS
- LOCAL NATURE RESERVE
- PARKS AND GARDENS
- AREAS OF OUTSTANDING NATURAL BEAUTY
- RAILWAY TUNNEL
- HIGH PRESSURE GAS PIPELINES
- LOG\_POINTS
- LOG\_POLYGOONS
- POTENTIALLY CONTAMINATED LAND
- Buffer Distance
- X X 0
- EA LANDFILL\_SITES
- Buffer Distance
- 0
- 200
- HISTORIC LANDFILL\_SITES\_10K
- BANK\_TOP\_WIDTH\_PLANNING
- DTL\_HOUSEHOLD\_AND\_MINOR\_SCALE\_DEVELOPMENTS
- DTL\_EA\_AND\_MAJOR\_SCALE\_DEVELOPMENTS
- Flood Zone 3
- Flood Zone 2
- NAT\_DEFESA
- NAT\_DEFENCES
- NAT\_AREAS\_BENEFIT
- NAT\_CENTRALLINES
- HS2 SAFEGUARDING\_ZONES
- Type
- Sub-station
- Sub-station
- NATURALLY ELEVATED ARSENIC
- GREEN BELT
- CONSERVATION\_TARGET\_AREAS
- MINERAL\_CONSULTATION\_REGION
- Neighbourhood Development Plans
- Neighbourhood Plan Area
- Important/Anxiety Green Spaces
- Local Green Spaces
- NATIONAL\_GRID\_REFERENCE
- WARDS
- PARISHES



© Crown Copyright and database right 2018. Ordnance Survey 100018504  
 © Environment Agency copyright and/or database right (2018). All rights reserved.

- Public Brideway
- Restricted Byway
- Byway Open to all Traffic
- SWIFT\_RECORDS
- PROTECTED\_AND\_NOTABLE\_SPECIES
- PROTECTED\_SPECIES\_BUFFER
- ROAD\_VERGE\_NATURE\_RESERVES
- EIL\_TEXT
- ASSETS OF COMMUNITY VALUE
- Area TPOs
- Group TPOs
- TPO Trees
- Woodland TPOs
- LISTED BUILDINGS**
- GRADE
- I
- II
- III
- DL
- COTTAGE LISTING
- LOCALLY\_LISTED\_BUILDINGS
- ARTICLE\_4
- ARCHAEOLOGICAL\_CONSTRAINT\_PRIORITY\_AREAS
- SCHEDULED\_ANCIENT\_MONUMENT
- EIL\_REGIONS
- PONDS\_MAPPING (INCLUDING GREAT CRESTED NEWTS)
- NERC ACT S41 Habitats (Previously UKBAP PRIORITY HABITATS)
- REGISTERED\_COMMON\_LAND
- SPECIAL\_SITES\_OF\_SCIENTIFIC\_INTEREST
- SPECIAL\_AREAS\_OF\_CONSERVATION
- ANCIENT\_WOODLAND
- CONSERVATION\_AREAS
- DISTRICT\_WILDLIFE\_SITES
- LOCAL\_WILDLIFE\_SITES
- PROPOSED\_NEW\_LWS\_AND\_EXTENSIONS\_LWS
- LOCAL\_NATURE\_RESERVE
- PARKS\_AND\_GARDENS
- AREAS\_OF\_OUTSTANDING\_NATURAL\_BEAUTY
- RAILWAY\_TUNNEL
- HIGH\_PRESSURE\_GAS\_PIPELINES
- LGS\_POINTS
- LGS\_POLYGONS
- POTENTIALLY\_CONTAMINATED\_LAND**
- Buffer Distance
- 0
- 50
- EA\_LANDFILL\_SITES**
- Buffer Distance
- 0
- 250
- HISTORIC LANDFILL\_SITES\_10K
- BANK\_TOP\_WIDTH\_PLANNING
- CR1 HOUSEHOLD\_AND\_MINOR\_SCALE\_DEVELOPMENTS
- CR1\_EIA\_AND\_MAJOR\_SCALE\_DEVELOPMENTS
- Flood Zone 0
- Flood Zone 1
- Flood Zone 2
- NAT\_DEFENCES
- NAT\_PSA
- NAT\_DEFENCES
- NAT\_AREAS\_BENEFIT
- NAT\_CENTRELINES
- HS2 SAFEGUARDING\_ZONES**
- Type
- Manufacturing Links
- Sub-stations
- Stations
- NATURALLY\_ELEVATED\_ARSENIC
- GREEN BELT
- CONSERVATION\_TARGET\_AREAS
- MINERAL\_CONSULTATION\_REGION
- Neighbourhood Development Plans**
- Details
- Neighbourhood Plan Area
- Important Arterial Green Spaces
- Local Green Spaces
- NATIONAL\_GRID\_REFERENCE
- WARDS
- PARISHES



1:7,790

© Crown Copyright and database right 2018. Ordnance Survey, 100018504  
 © Environment Agency copyright and/or database right (2018). All rights reserved.

- Public Byway
- Restricted Byway
- Byway Open to all Traffic
- ROAD\_VERGE\_NATURE\_RESERVES
- SWIFT\_RECORDS
- PROTECTED\_SPECIES\_BUFFER
- PROTECTED\_SPECIES\_BUFFER
- ROAD\_VERGE\_NATURE\_RESERVES
- EIL\_TEXT
- ASSETS OF COMMUNITY VALUE
- Area TPOs
- Group TPOs
- TPO Trees
- Woodland TPOs
- LISTED BUILDINGS**
- GRADE
- I
- II
- III
- DL
- COURTLAGE LISTING
- LOCALLY LISTED BUILDINGS
- ARTICLE 4
- ARCHAEOLOGICAL\_CONSTRAINT\_PRIORITY\_AREAS
- SCHEDULED ANCIENT MONUMENT
- EIL\_REGIONS
- PONDS\_MAPPING (INCLUDING GREAT CRESTED NEWTS)
- NERC ACT S41 Habitats (Previously UKBAP Priority Habitats)
- REGISTERED COMMON LAND
- SPECIAL SITES OF SCIENTIFIC INTEREST
- SPECIAL AREAS OF CONSERVATION
- ANCIENT WOODLAND
- CONSERVATION AREAS
- DISTRICT WILDLIFE SITES
- LOCAL WILDLIFE SITES
- PROPOSED\_NEW\_LWS\_AND\_EXTENSIONS\_LWS
- LOCAL\_NATURE\_RESERVE
- PARKS\_AND\_GARDENS
- AREAS\_OF\_OUTSTANDING\_NATURAL\_BEAUTY
- RAILWAY\_TUNNEL
- HIGH-PRESSURE GAS PIPELINES
- LGS\_POINTS
- LGS\_POLYGONS
- POTENTIALLY CONTAMINATED LAND**
- Buffer Distance
- XX 0
- XX 50
- EA LANDFILL\_SITES**
- Buffer Distance
- 0
- 250
- HISTORIC LANDFILL SITES 10K
- BANK TOP WIDTH PLANNING
- ONE HOUSEHOLD AND MINOR SCALE DEVELOPMENTS
- ONE TO TWO HOUSEHOLD AND MINOR SCALE DEVELOPMENTS
- ONE TO TWO HOUSEHOLD AND MINOR SCALE DEVELOPMENTS
- Flood Zone 1
- Flood Zone 2
- NAT\_FSA
- NAT\_DEFENCES
- NAT\_AREAS\_BENEFIT
- NAT\_BOUNDARIES
- HS2 SAFEGUARDING\_ZONES**
- Type
- Safeguarding Limits
- Sub-surface
- Surface
- NATURALLY ELEVATED ARSENIC
- GREEN BELT
- CONSERVATION\_TARGET\_AREAS
- MINERAL\_CONSULTATION\_REGION
- Neighbourhood Development Plans**
- Neighbourhood Plan Area
- Important Advisory Green Spaces
- Local Green Spaces
- NATIONAL\_ORIO\_REFERENCE
- WARDS
- PARRISHES