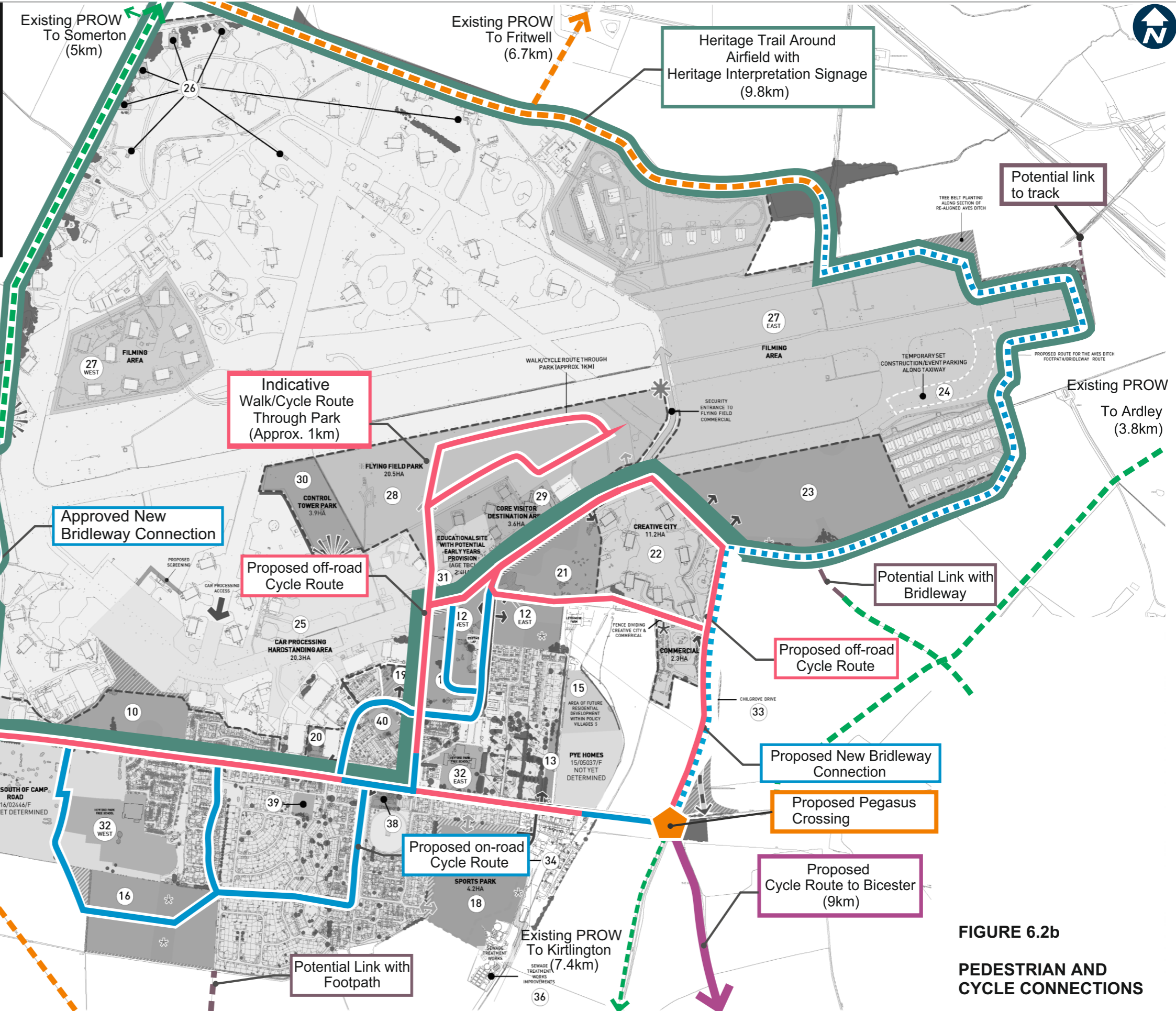


**Key:**

- Primary Pedestrian & Cycle Routes (off-road cycle provision)
- Secondary Pedestrian & Cycle Routes (on-road cycle provision)
- On-road Cycle Connections
- Heritage Trail
- - - Existing Bridleways
- - - Existing Footpaths
- - - Consented Bridleway
- - - Potential Link with Public Right of Way
- Proposed Formal Cycle Route



**FIGURE 6.2b**  
**PEDESTRIAN AND**  
**CYCLE CONNECTIONS**

25/06/2020  
 SCALE: NTS @ A3