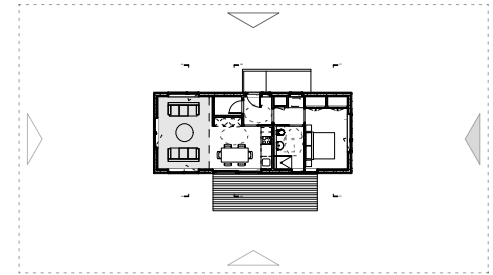


PROPOSED HOUSE FOR
Nicola Durrant

Shrubbery Cottage
Small House Lane
Sibford Ferris
Banbury
OX15 5RG

SITE AREA 1,817 SQM



FFL

MATERIALS:

Lindab galvanised metal gutters & downpipes. Lindab 'Rainline' Rainwater Systems - A roof drainage system designed to be corrosion resistant, easy to install and vandal resistant. Consult with Lindab Ltd for design sizes, specification and jointing details.

Vertical larch rainscreen cladding on vertical battens as per *TRADA* specification. Line through larch cladding boards at head of openings to avoid cutting of profile. Window heights have been calculated on the basis of 75mm boards and a 8-10mm shadow gap. Fit insect mesh at bottom of cavity. Boards to be laid out at equal distance apart whilst ensuring no cutting at openings. Start cladding at openings and work out spacings between carefully. Contact *Russwood* technical for further details.

Front elevation shutter system by specialist supplier (Runners series 20 or equal) finished in RAL 7043 to match. Fit strictly in accordance with manufacturer's instructions. Measure on site before ordering to ensure correct fit. Fasten to structure as per guidelines. Shutters constructed of cladding bound by 25 x 25mm min. aluminium angle.

Sila A/B® sawn boards of Siberian Larch 25x75mm square profile rainscreen cladding by *Russwood* (or equal): Practically centre free, one face sap free, tight live knot structure of max 25mm in diameter; resin pockets maximum of one per 2.5m; kiln dried to 16-18% moisture content which is the optimum moisture content for external timber cladding. Lengths 6.0m - 2.4m with max 5% 1.8 - 2.1m. Finished with SIOO:X wood protector and surface protector applied in two parts as per manufacturers guidelines

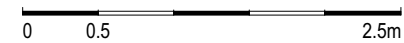
Firestops at top of cavity, between floors, behind rones and around all openings to meet *TRADA*, *NHBC* and industry standards. Firestops and movement joints shown with dashed lines.

SIP (Structurally Insulated Panels) by *Hemsec* (or equal) comprising of two layers OSB/3 board (softwood flakes/strands bonded together with MUPF (melamine urea-phenolic) resin, MDI (diisocyanate diphenylmethane) binder and waxes) bonded by pressure injection to CFC free/ODP zero polyurethane closed cell foam. Manufactured to the specification detailed in BS EN 300 : 1997 for OSB/3. Width up to 1200mm, wall heights up to 3000mm, roof panels up to 6500mm.

CUPA Heavy 3 natural spanish slate (or equal) preholed 300 x 200mm with 75mm headlap

Nordan N-tech 1.2 high performance, factory finished timber windows and exterior doors. RAL7015 factory finished. Double glazed unit with Argon cavity fill and low energy coated glass. Warm edge technology, U-values from as low as 1.2 W/m2K.

Gutter valley roof finished with Alwitra Evalon roofing membrane glued directly to ply on battens. Alwitra Evalon® V - Product of ICB (International Construction Bureau) Ltd. EVA modified PVC waterproof single ply membrane in slate grey. British Agrément Certificate No. 96/3293. Fully tested to meet and exceed all current European Design and Performance Standards.



HEB HOMES

Fa's - Sabhal Mor Ostaig - Sleat - Isle of Skye - Scotland - IV44 8RQ
Unit 4 - Building 5 - Templeton Business Centre - Glasgow - G40 1DA
tel +44 (0)141 550 7360 fax +44 (0)141 550 7361
email info@hebrideanhomes.com
web www.hebrideanhomes.com

Copyright © Hebridean Contemporary Homes Ltd [2017]. All rights reserved. Any breach of copyright will be pursued. To be read in conjunction with the specification and all relevant drawings. Contractor to check all dimensions on site. Do not scale from this drawing. Architect to be advised of any variation between the drawings and site conditions.

Note: Construction must comply with all NHBC and industry standards.

Note: Construction must comply with all NHBC and industry standards

DRAWING SET BUILDING WARRANT		CLIENT H_611_DURRANT
DRAWING TITLE EAST ELEVATION		
DRAWING NUMBER 611_BW_403_EE	DRAWN BY CM	DATE 21/11/18
CAD FILE NAME H_611_BW_DURRANT		SCALE 1:50 @ A3