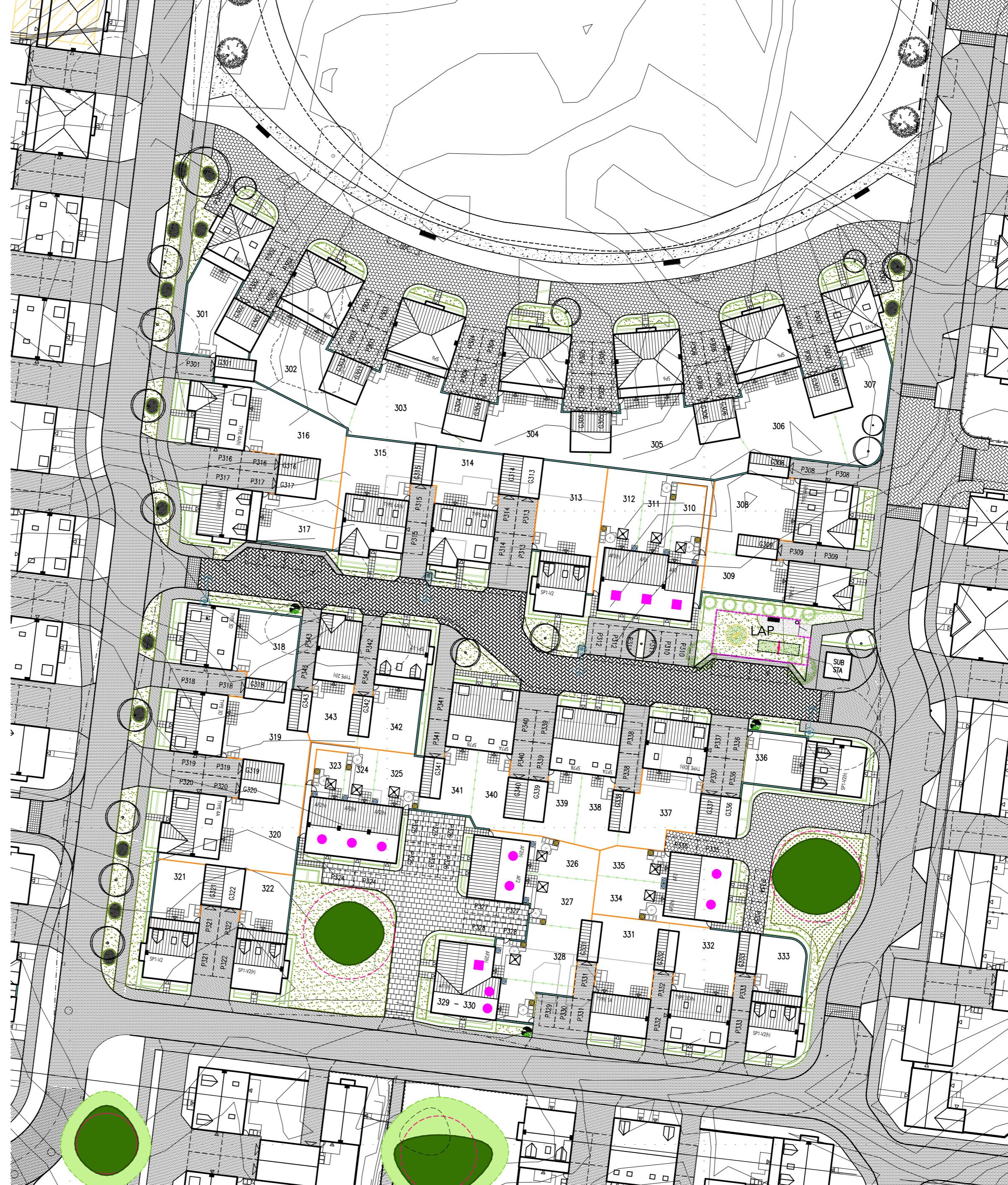


PHASE 6, HEYFORD PARK, UPPER HEYFORD, BICESTER

This drawing is the copyright of Focus On Design which is a trading name for Focus Design Partnership Limited. No liability will be accepted for amendments by others to either the printed or digital format.

LEGEND					
EXISTING VEGETATION					
	EXISTING TREE TO BE RETAINED WITH MATURE CANOPY SIZE		EXISTING RPA		EXISTING VEGETATION TO BE REMOVED
EXTERNAL BOUNDARY TREATMENTS					
	1800mm HIGH SCREEN WALL REFER TO MATERIALS LAYOUT 0521-PM-018 FOR MATERIALS		1800mm HIGH CLOSE BOARD TIMBER FENCE		300mm HIGH TRELLIS ON 1500mm HIGH SCREEN WALL REFER TO MATERIALS LAYOUT 0521-PM-018 FOR MATERIALS
	1000mm HIGH METAL BOW TOP RAILINGS		1800mm HIGH PLOT DIVISION PANEL FENCE		1800mm HIGH TIMBER MATCHBOARD ACCESS GATE
NUMBERING					
12	PLOT NUMBERS	G12	GARAGE NUMBERS	P12	PARKING NUMBERS
V	VISITOR PARKING	(h)	FLOT HANDING		
MISCELLANEOUS					
	CHIMNEY		GARAGE ACCESS		PERSONNEL ACCESS
	AFFORDABLE HOUSING - RENTED		AFFORDABLE HOUSING - INTERMEDIATE		BIN HARDSTANDING
	BIN HARDSTANDING WITH 1.5m TURNING CIRCLE		ROTARY DRYER		STREET LIGHTING COLUMN
	COMPOST BIN		WATER BUTT		BIN MUSTER AREA
GROUND SURFACING					
	MARSHALLS KEYBLOCK BLOCK PAVING COLOUR: BRINDLE		BAMP / RUMBLE STRIP TO ENGINEERS DESIGN		TARMAC
	PAVING SLABS		LOOSE STONE GRID SYSTEM		BIN SLAB
	450mm x 450mm MARSHALLS SAVON BUFF PATIO SLABS		MARSHALLS PRORA CONCRETE BLOCK PERMEABLE PAVING COLOUR: BRINDLE		HOGGIN
LANDSCAPING					
	PROPOSED NEW TREE REFER TO SEPARATE LANDSCAPING DRAWINGS FOR EXACT DETAILS		PROPOSED HEDGEROW REFER TO SEPARATE LANDSCAPING DRAWINGS FOR EXACT DETAILS		PROPOSED PLANTING BEDS REFER TO SEPARATE LANDSCAPING DRAWINGS FOR EXACT DETAILS
	PROPOSED GRASS PLANTING REFER TO SEPARATE LANDSCAPING DRAWINGS FOR EXACT DETAILS				

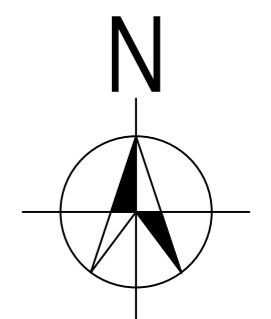


- REVISIONS:**
- A. 2015-12-09. Visibility splays added to junctions, landscaping updated. MED
 - B. 2016-01-12. Patio length updated for Type 1A, Type 1A-SA, Type 2, SP1, Type 3D, Type 4A & SP6 house types as per client request. SO
 - C. 2016-02-26. Buildouts repositioned and on-street parking spaces amended along the road North East of the site. PVA
 - D. 2016-03-17. Layout amended at client request. MED
 - E. 2016-04-15. Plots 338 & 341 changed from SP7 to SP7A and plots 339 & 341 changed from SP7(h) to SP7B, additional visitor spaces added, screen wall adjustments made, SP6 footprint amended. AJA/MED
 - F. 2016-05-10. Hard-standing around the sub-station and Type 3D footprint amended. MED
 - G. 2016-07-13. SP1 footprint reference amended at client request. MED
 - H. 2016-07-15. LAP repositioned at Local Authority request. MED
 - I. 2016-08-10. Minor amendments to fences between plots 318, 319 and 343. DW
 - J. 2016-10-07. Boundary types colour coded. AJA
 - K. 2016-12-21. Bollard in front of plot 304 removed and replaced with a landscaped strip. MED
 - L. 2017-03-17. Single garages increased in width to 3253mm and street lights and platforms added. AJA
 - M. 2017-03-24. Rumble strips on private drives leading to gravel amended to tarmac/block paving, garages in plots 302-307 moved back to give 2m between garage and house and sheds removed. AJA
 - N. 2017-03-29. Legend updated. MED
 - O. 2017-04-24. Footpath to southern edge of village green and adjacent to plots 301-307 shown as Hoggin. AJA
 - P. 2017-06-14. Rear access gates to Plots 310, 312, 313, 323, 326, and 334 repositioned to permit access to meters. Rear boundaries to Plots 301-307 to be screen wall in lieu of close board fence. DJE
 - Q. 2017-06-30. Screen wall to the rear of plots 302-306 and 310-316 repositioned and double garage G313 and G314 moved back. AJA
 - R. 2017-08-25. Garages for plots 301-309, 313-317 & 338 resized. AJA
 - S. 2017-11-03. Area to the rear of visitors parking changed from block paving to tarmac at clients request. AJA

ACCOMMODATION SCHEDULE					
OPEN MARKET					
Name	Stories	Bedrooms	sqft		
TYPE 1A	2 Storey	3 Bed house	1023ft ²	1	
TYPE 2	2 Storey	4 Bed house	1219ft ²	2	
SP7A	2.5 Storey	4 Bed house	1400ft ²	2	
SP7B	2.5 Storey	4 Bed house	1400ft ²	2	
SP1-V3	2.5 Storey	4 Bed house	1723ft ²	2	
SP1-V2	2.5 Storey	4 Bed house	1723ft ²	7	
TYPE 3D	2.5 Storey	5 Bed house	1942ft ²	4	
TYPE 4A	2.5 Storey	5 Bed house	2229ft ²	5	
SP6	3 Storey	5 Bed house	2671ft ²	5	
TOTAL				30	
AFFORDABLE HOUSING UNITS - RENTED					
Name	Stories	Bedrooms	sqft		
AF1(Ground)	2 Storey	1 Bed maisonette	542ft ²	1	
AF1(First)	2 Storey	1 Bed maisonette	626ft ²	1	
AF2	2 Storey	2 Bed house	782ft ²	5	
AF3	2 Storey	3 Bed house	910ft ²	2	
TOTAL				9	
AFFORDABLE HOUSING UNITS - INTERMEDIATE					
Name	Stories	Bedrooms	sqft		
AF2	2 Storey	2 Bed house	782ft ²	2	
AF3	2 Storey	3 Bed house	910ft ²	2	
TOTAL				4	
TOTAL AFFORDABLE UNITS				13	
GRAND TOTAL				43	

PLANNING LAYOUT

SCALE: 1:500 @ A2
 DATE: SEPTEMBER 2015
 DRAWN: PVA
 DRAWING TITLE: PLANNING LAYOUT
 DRAWING NO: 0521-PH6-102



www.focusdp.com
FOCUS ON DESIGN

THE OLD BREWERY, LODWAY, PILL, BRISTOL BS20 0DH
 t:01275 813380 f:01275 813381 e:admin@focusdp.com