

OXFORDSHIRE COUNTY COUNCIL STREET LIGHTING SPECIFICATION

Column 6m tubular steel column (BS EN 40) BD94/07 (Style 2 dty HSD/13/010) suitable for post-top mounted lantern. Rationalised wind loading factor for Oxfordshire as specified in PD6547:2009 for design of lighting columns

4 No. ←

Bracket Post top mounted at 0° up/lift

Lantern LED Roadway lighting NXT series small - Green RAL 6013

Lantern ref NXT 24S-0-7-2EM-4-RAL6013-3-CE-X-2H

Switch 24 Watt LED 450mA 4000K Colour temperature
One part photocell Nema 7 pin type (Zodion Super 6) set at 35 / 18 Lux
Pre-set to dim to 50% between 10:00pm to 6:00am

Column finish EPA Compliant Epoxy / Polysiloxane Amended Oxfordshire County Council

Specification:

i.e. Requirements for Lighting Columns, Bracket Arms & Doors (See Oxfordshire amended Appendix 19/3). Upper Additional overall coats to be applied in strip to a clean degreased, lightly abraded dry surface.

1st Coat: Internal root to 250mm above ground level & External overall

Item 121, Dacrylate 2 Pack Extended Cure Epoxy MIO, ref 90-270, Airless Spray, Minimum Dry Film Thickness 100 microns.

2nd Coat: External root to 250mm above ground level

Dacrylate Epidac 2 Glass Reinforced 2-Pack Epoxy, ref 79-489, Brush/Airless Spray, Minimum Dry Film Thickness 200 microns.

3rd Coat: External overall

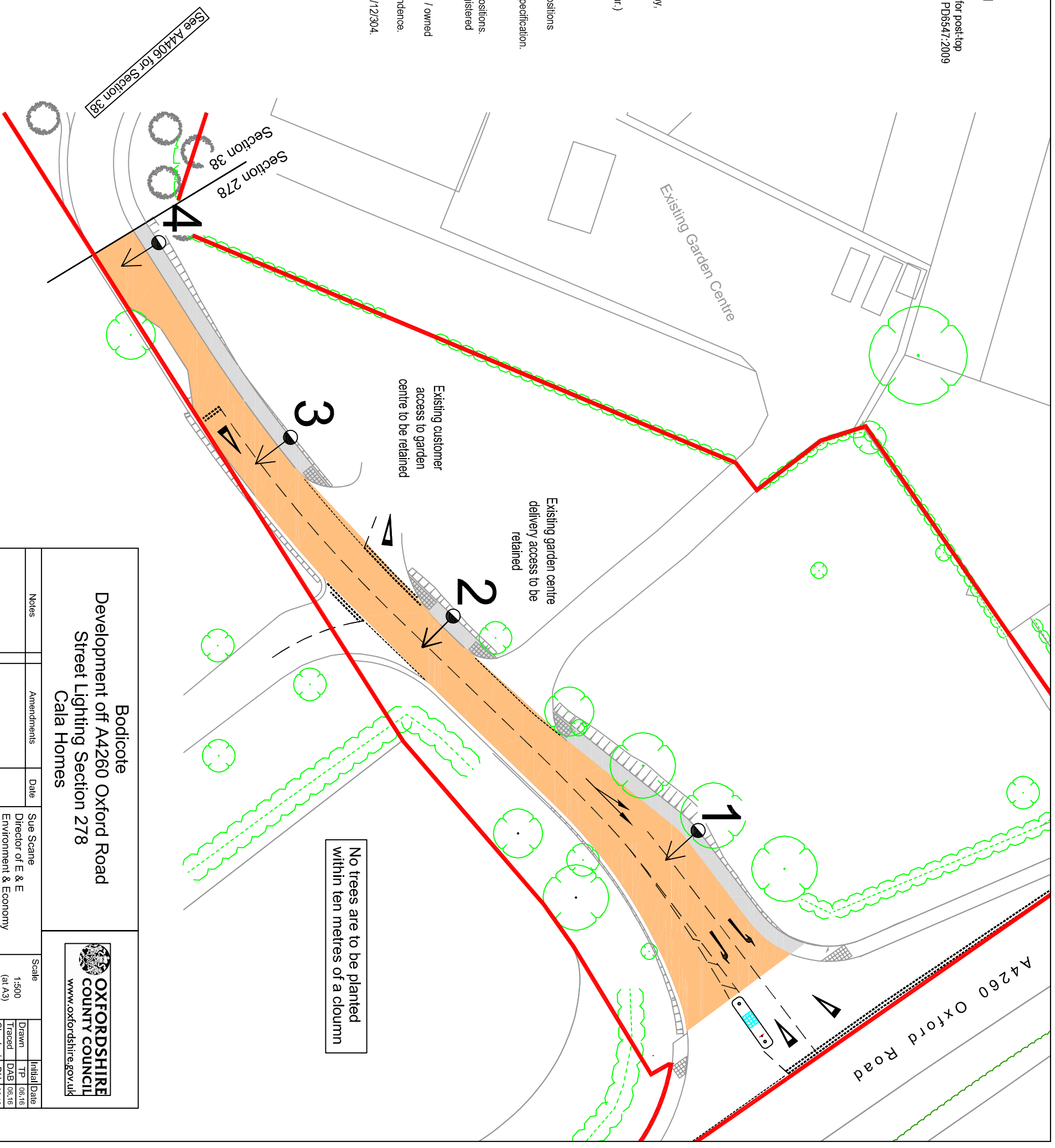
Dacrylate Dacsil 200 2-Pack Polysiloxane Finish RAL 6013 (or other specified colour) 200 - line, Conventional Spray, Minimum Dry Film Thickness

Additional notes :-

- 1) Columns to be sited at the rear of footpath and within adoptable area.
- 2) Positions are approximate. The Local Authority Engineer reserves the right to alter positions depending on site conditions.
- 3) All equipment shall comply with the Oxfordshire County Council General Technical Specification.
- 4) The Contractor shall obtain samples of the paint and technical Data Sheets from the Manufacturers prior to commencement of work.
- 5) In order to assist the developer, the design Engineer will mark out all of the column positions.
- 6) All Street Lighting works must be carried out by a Highway Electrical Association Registered Contractor.
- 7) All columns to be numbered two metres from ground level.
- 8) Electrical Supply to Street Lighting Columns and Illuminated Signs are to be serviced / owned by the local Distribution Network Operator (i.e. Regional Electricity Company).
- 9) The "A file reference number" which is on the drawing, is to be quoted in all correspondence.
- 10) No trees are to be planted within ten metres of a column.
- 11) Columns in vulnerable positions to have a column barrier protection system see HSD/12/304.

NB: Touch up on site using 2 Pack paints applied by brush will never offer the same appearance as that of a spray applied finish. For this reason every effort should be made to minimize handling / transportation damage.

Street Lighting to be adopted by
OXFORDSHIRE COUNTY COUNCIL



<p align="center">Bodicote Development off A4260 Oxford Road Street Lighting Section 278 Cala Homes</p>		<p align="center">OXFORDSHIRE COUNTY COUNCIL www.oxfordshire.gov.uk</p>										
Notes	Amendments	Date	Sue Scane Director of E & E Environment & Economy Oxfordshire County Council Speedwell House Speedwell Street Oxford OX1 1NE									
Scale		1:500 (at A3)	<table border="1"> <tr> <td>Drawn</td> <td>TP</td> <td>06.16</td> </tr> <tr> <td>Traced</td> <td>DAB</td> <td>06.16</td> </tr> <tr> <td>Checked</td> <td>DH</td> <td>06.16</td> </tr> </table>	Drawn	TP	06.16	Traced	DAB	06.16	Checked	DH	06.16
Drawn	TP	06.16										
Traced	DAB	06.16										
Checked	DH	06.16										
Drawing No.		A4405										

