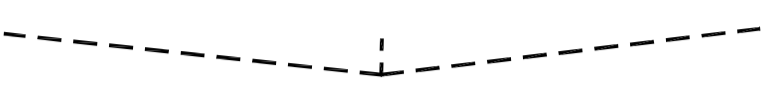
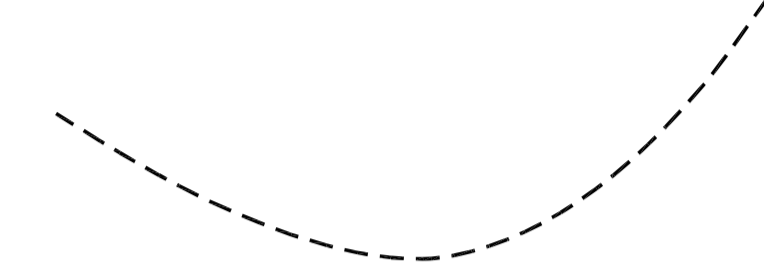


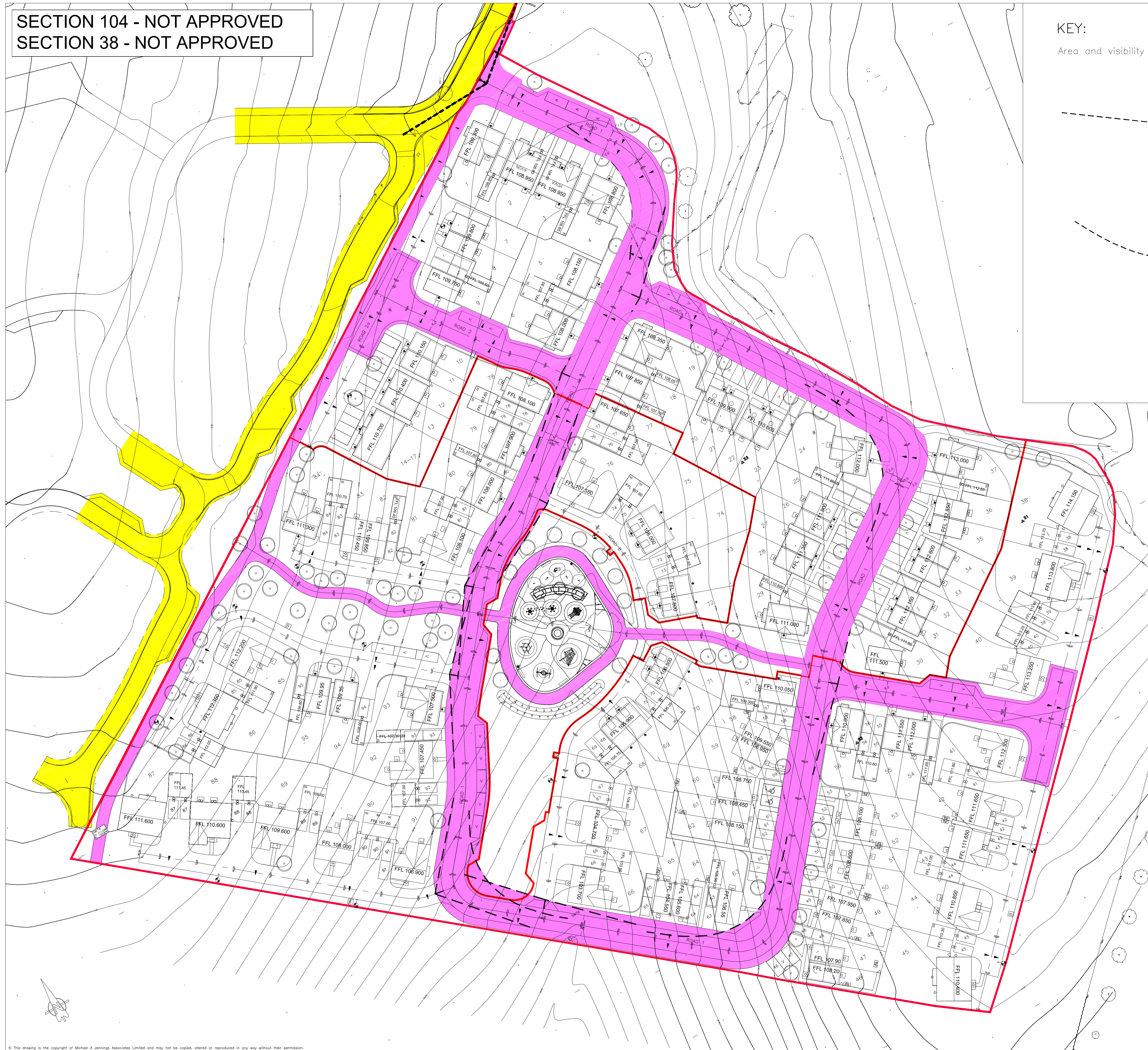


SECTION 104 - NOT APPROVED  
SECTION 38 - NOT APPROVED

KEY:


Area and visibility splays subject to approval by Oxfordshire County Council (OCC).

-  - Indicative visibility splays of 2.4 x 25.0m at junctions based on MfS for 20mph.
-  - Forward visibility based on OCC Residential Design Guide specification for 20mph
-  - Area proposed for adoption by Oxfordshire County Council (Highways).
-  - Area proposed for adoption under adjacent Cala Homes Section 38 agreement



PLANNING

REV. No.	DATE	DESCRIPTION	INITIALS
J	28.09.18	Revised in accordance with current planning layout.	TDF
H	26.09.18	Revised in accordance with current planning layout (phase 2 only).	TDF
G	20.07.18	Revised in accordance with current combined planning layout.	AJW
F	13.07.18	Revised in accordance with current combined planning layout.	AJW
E	12.06.18	Revised in accordance with current planning layout Rev. Z.	JRV
D	14.05.18	Revised in accordance with current planning layout Rev. Y.	AJW
C	24.04.18	Revised in accordance with current planning layout.	AJW
B	03.04.18	Revised in accordance with current planning layout.	AJW
A	23.01.18	In accordance with current planning layout (incl. reduced application area).	AJW

Client <b>CREST NICHOLSON</b>		<b>MJA CONSULTING</b> CIVIL AND STRUCTURAL ENGINEERS Monarch House, Barton Lane, Abingdon, Oxon, OX14 3NB Tel: 01235 555173 Fax: 01235 523226	
Project Bodicote, Banbury			
Title Proposed Highway Adoption Extents	Scale 1:500 @A1	Date Nov 2017	Drawing No. 5692:P500
Checked KTG	Drawn AJW	Rev J	