

Front Section
(Scale 1:10)

Nominal 200 x 25mm sw ridge board, subject to confirmation by roof truss manufacturer.

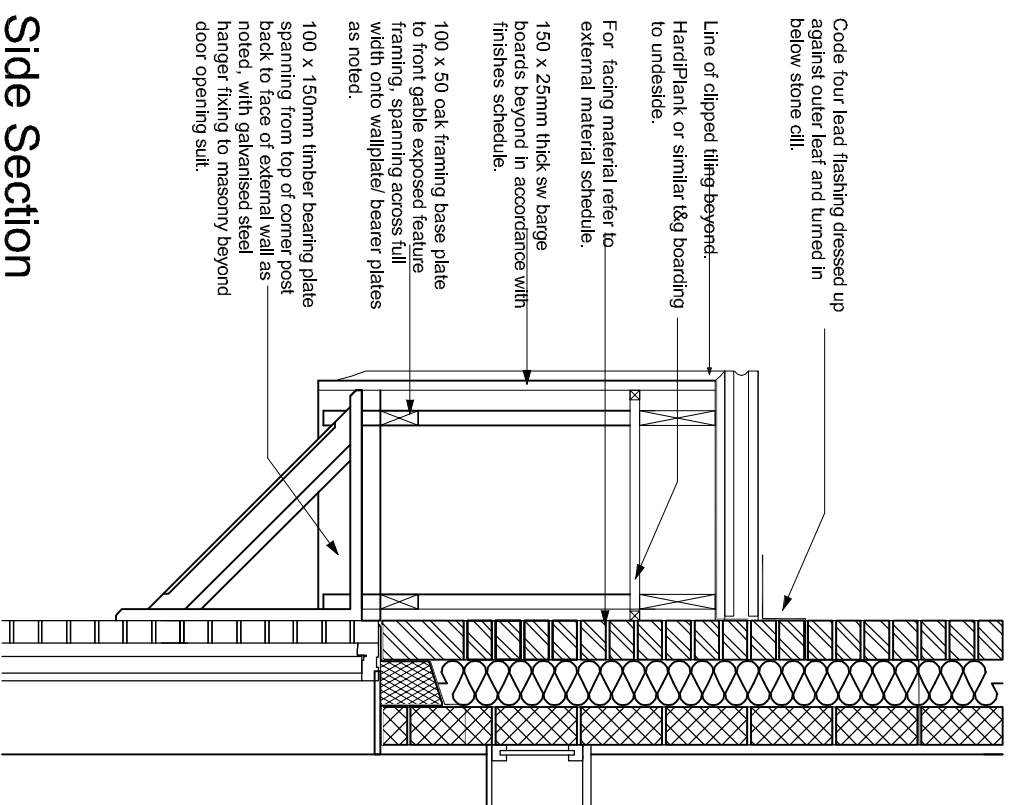
Roof tiles as specified fixed in accordance with manufacturers recommendations to treated John Brash JB red Pre-greaded s.w battens to BS 5534 for all tile types, on Proctor Roofshield membrane on trussed rafters or loose timbers at max 600mm c/c. For batten sizes refer to CN construction notes.

Nominal 100 x 38 SC3 cut truss rafter subject to confirmation by roof truss manufacturers.

Hardiplank or similar t&g boarding fixed directly to u/s of rafters.

100 x 150mm timber bearing plate spanning from top of corner post back to face of external wall, subject to confirmation by Specialist Contractor, and with galvanized steel fixings to suit throughout.

150 x 25mm treated sw fascia board.



Side Section
(Scale 1:10)

Code four lead flashing dressed up against outer leaf and turned in below stone cill.

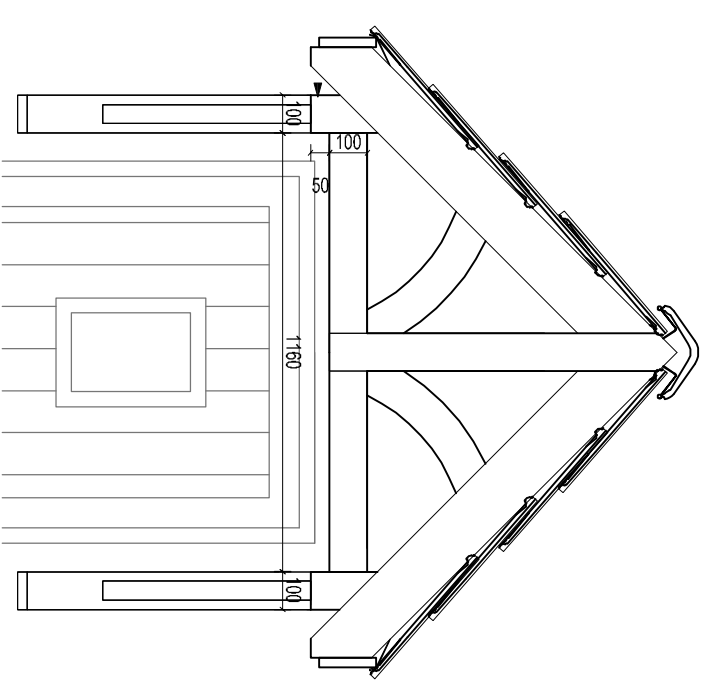
Line of clipped tiling beyond Hardiplank or similar t&g boarding to underside.

For facing material refer to external material schedule.

150 x 25mm thick sw barge boards beyond in accordance with finishes schedule.

100 x 50 oak framing base plate to front gable exposed feature framing, spanning across full width onto wallplate/ bearer plates as noted.

100 x 150mm timber bearing plate spanning from top of corner post back to face of external wall as noted, with galvanised steel hanger fixing to masonry beyond door opening sill.



Front Elevation
(Scale 1:10)

- PORCH RELEVANT TO:-**
- * RADLEY
 - * HARTLEY
 - * LANGFORD
 - * BROADWELL
 - * WALBERSWICK
 - * AH3B
 - * AH2B
 - * DOVEDALE

C1 Construction Issue

18/10/2016 JOA

Rev Description Date Initial



Crest Nicholson Ltd.
Crest House
Pyroft Road
Chertsey
Surrey
KT16 9GN
Tel: 01932 580 555
Fax: 08703 363 990
www.crestnicholson.com

Site/House Type: Crest Standard Details

Dwg Title: Front Entrance & Pitched Canopy Details -
45 degree roof pitch

Scale: 1:10@A3 Date: Jan 2018 Drawn: WGH Checked: CB

CAD Ref: - NHBC Approval Ref: -

Drawing No: CNSD/2013/107-3 Revision: **