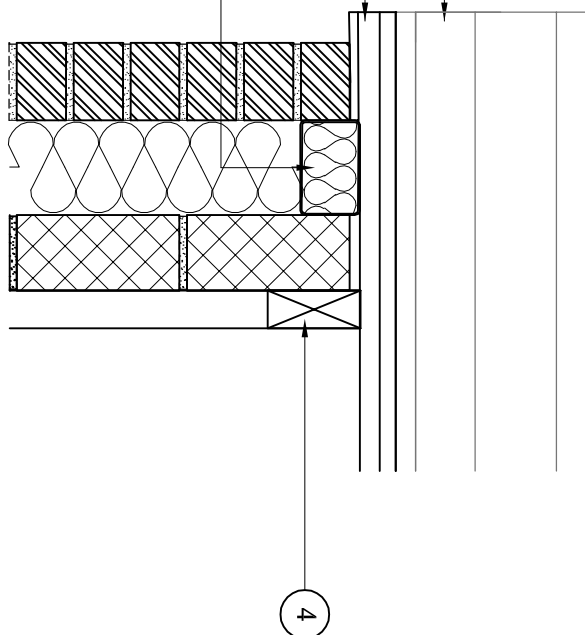
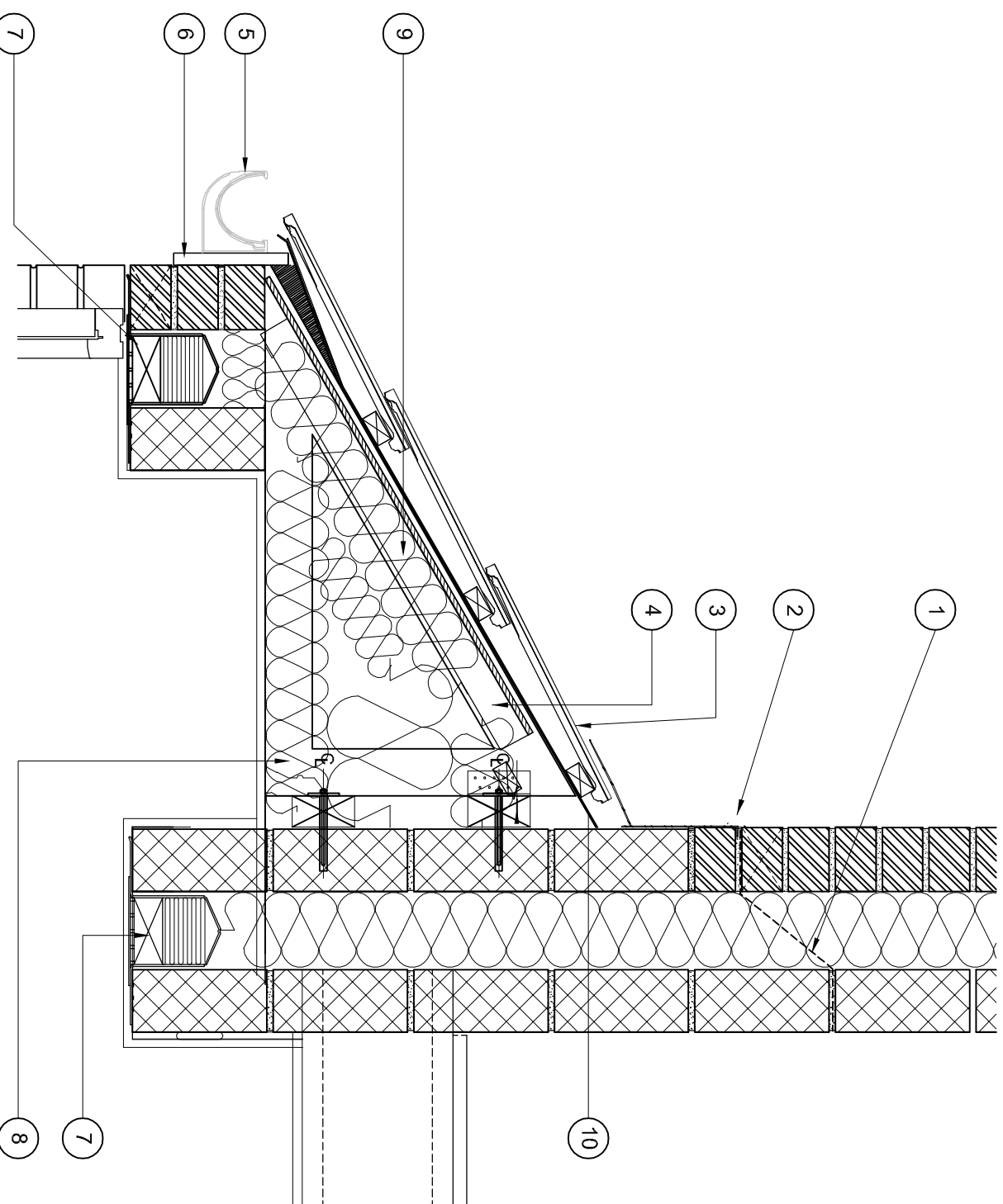


SECTION A-A 1:10



SECTION B-B 1:10

PLAN 1:20



PLAN 1:20

1. Cavity Tray to rise across cavity 100mm minimum.
2. Code 4 lead flashing combined with DPC cavity tray in external wall.
3. Roof tiles as specified fixed in accordance with manufacturers recommendations to treated John Brash JB red Pre-graded s.w battens to BS 5534 for all tile types, on Proctor Rootshield membrane. For batten sizes refer to CN construction notes. The manufacturer to advise on any requirements for counter battening for ventilation purposes
4. Trusses by specialist manufacturer on truss hangers fixed to timber bearer.
5. 15mm black half round PVC-U FMS gutter deep flow. All to be fixed in accordance with manufacturers details.
6. 175mm SW fascia board.
7. IG insulated galvanised steel L/S 110 lintel or similar approved. For full details of lintels over openings, refer to Structural Engineers details & specification.
8. Roof insulation to consist of 3 No. layers of Knauf Earthwool Loft Roll 44 (0,044W/mK) to BS EN 13162:2012 laid cross ply 400mm thick. The first 100mm layer being laid between the ceiling joists/trusses, the second layer of 200mm being laid across the ceiling joists/trusses and the third 100mm layer at right angle to the preceding layer
9. 9mm ply sheet supported by 38 x 50mm battens. Alternatively, Gildewale RV rafter ventilators between trusses at standard centres to prevent insulation pressing against rootshield. Where centres between trusses are non standard, tray to be formed with 9mm ply, or 9mm OSB sheet supported by 38 x 50mm battens.
10. 50 x 100 timber bearer bolted back to masonry to SE design & specification.
11. 100mm mortar for verge laid on one operation (no pointing) in compliance with NHBC chapter 7.2.
12. Continuous ARC CSS125 cavity barrier.

Rev.	Description	Date	Initial
**	**	**	**

Crest Nicholson Ltd.
 Crest House
 Lime Kiln Close
 Stoke Gifford
 Bristol
 BS34 8ST
 Tel: 0117 923 6600
 Fax: 0117 969 5792
 www.crestnicholson.com

Site:	BODICOTE
House Type:	AH2B WC
Page Title:	Traditional entrance Arrangement
Scale:	1:10
Page Size:	A3
Drawn:	JOA
Checked:	DL
Date:	Jan 18
Revision:	**
Drawing No:	CNSD/1084