

FOR CONTINUATION REFER LLA DWG 1908 15

PHASE I

PHASE I

LEGEND

- Existing trees / vegetation - refer to arboricultural report for detail
- Proposed tree
- Proposed hedge
- Proposed specimen shrub
- Proposed climber
- Proposed planting
- Proposed grass
- Proposed EM2 Standard General Purpose Meadow Mixture by Emorsgate
- Proposed root barrier - GreenBlue Urban ReRoot 1000 or similar approved
- Page division lines
- Site application boundary

GENERAL NOTES

This drawing is to be used for planting information only, and is subject to alteration through changes to the site layout or until approved by the area designer.

Any species substitution by the contractor must be verified with the Landscape Architect through the Job Architect.

This layout must be checked in accordance with NHBC Standards 2013 (Chapter 4.2 - Building Near Trees & Chapter 9.2 Drives, Paths and Landscaping) by the Regional Engineer prior to implementation.

Excavations: Contractors must ensure that they have full information relating to service and drainage positions before undertaking any excavations.

Root barriers to be used in association with tree planting adjacent to kerbs / services / footpaths etc. (GreenBlue Urban ReRoot products or similar application, in accordance with manufacturer's instructions).

For Planting Schedule refer to LLA drawing 1908 18

For Landscape Specification, Planting Details and Emorsgate Seed Mixes refer to LLA drawing 1908 09

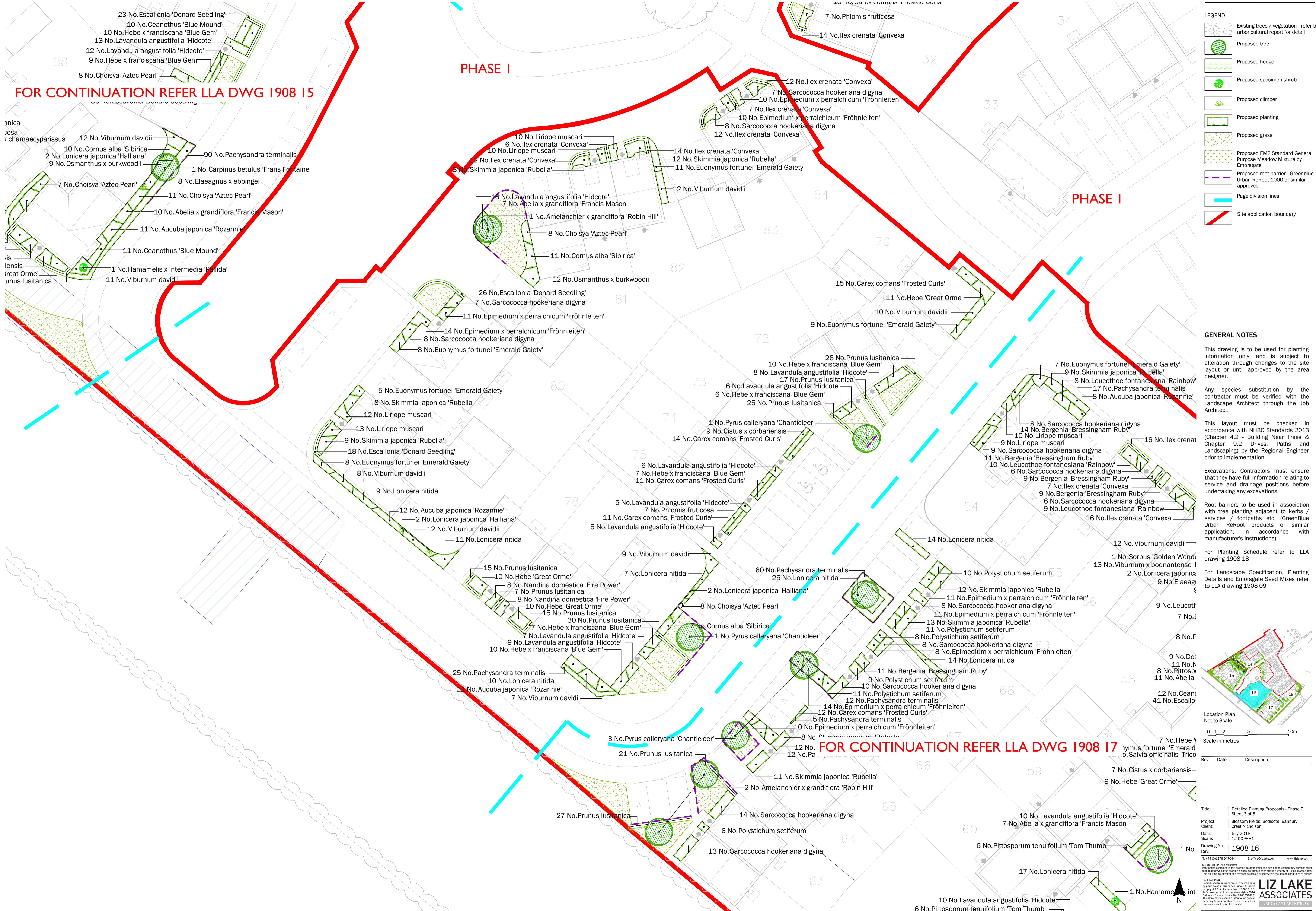


Rev	Date	Description

Title: Detailed Planting Proposals - Phase 2 Sheet 3 of 5
 Project: Blossom Fields, Bodcote, Banbury
 Client: Crest Nicholson
 Date: July 2019
 Scale: 1:200 @ A1
 Drawing No: 1908 16
 Rev:

© 2019 LIZ LAKE ASSOCIATES
 All rights reserved. This drawing is confidential and may not be used for any purpose other than that for which it was prepared without the prior written authority of LIZ LAKE ASSOCIATES. This drawing is copyright and may not be copied or reproduced without the prior written authority of LIZ LAKE ASSOCIATES.

LIZ LAKE ASSOCIATES
 LANDSCAPE ARCHITECTS



FOR CONTINUATION REFER LLA DWG 1908 17