

SUMMARY PLANTING SPECIFICATION

These implementation and maintenance guidelines are for planning purposes only to indicate the level of workmanship to be specified and do not constitute a detailed specification.

1. GENERAL

- All landscape operatives will be appropriately trained, certified and qualified to undertake the tasks required. When required, the relevant certificates will be made available for inspection. All work is to be carried out in accordance with the relevant British Standards, Codes of Practice and Legislation.
- All plants shall conform to BS 3936 and be in accordance with the National Plant Specification. Supplying nurseries shall be registered under the HTA Nursery Certification Scheme. All plants shall be packed and transported in accordance with the Code of Practice for Plant Handling as produced by CPSE.
- Planting shall not be carried out when the ground is waterlogged, frost bound or during periods of cold drying winds. All bareroot planting stock will be kept covered until actually planted in order to minimise water-loss and prevent the roots from drying out. Tree handling, storage and planting shall be in accordance with BS 8545 Chapters 9 to 10 and Annexes E to F.
- The landscape contractor shall maintain all areas of new planting for a period of 12 months following practical completion. All stock deemed to be dead, dying or diseased within the defects period shall be replaced by the contractor at his own cost.

2. TREE PLANTING

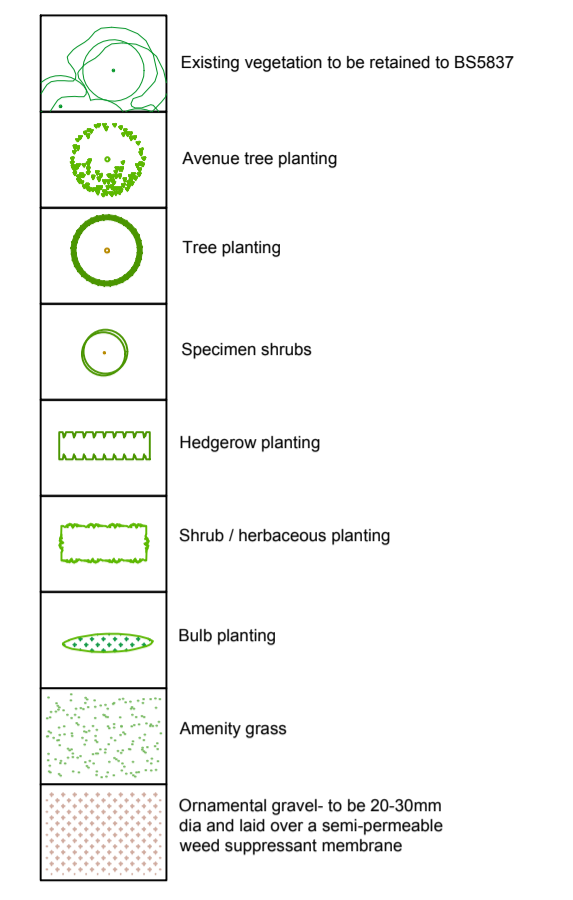
- Ground Preparation and Tree Pit Excavation**
- Where necessary treat existing weeds with a glyphosate based herbicide and allow a suitable period to elapse, as recommended by the manufacturer, for the herbicide to take effect.
 - Tree pits of at least 75mm diameter greater than the root system and no deeper than the rootball / container depth are to be excavated and the sides well scarified to prevent smearing. All extraneous matter such as plastic, wood, metal and stones greater than 50mm in any dimension shall be removed from site.
 - During excavation of the pit, the soil dug should be placed to one side separating topsoil and subsoil as far as is practical.
- Tree Planting**
- Trees shall be planted as per the planting arrangement as set out on the planting plan and plant schedule.
 - The typical rooting depth for trees is 900mm. The first 300mm shall be made up of topsoil; it shall be ensured that a suitable subsoil provides the remainder of the minimum rooting depth.
 - The root system of the tree should be wetted prior to planting. The tree should be planted at the correct depth taking into account the position of the root flare and the finished level - the rootball or root stem transition should be level with the soil surface. The base of the rootball should typically sit on subsoil, for larger rootballs the subsoil will sit around the lower portion of the rootball.
 - Tree pits should be backfilled with the excavated topsoil. If the original topsoil is not available or deemed unsuitable, a multi-purpose topsoil should be used. Any subsoil excavated should be discarded and the subsoil depth (beyond 300mm deep) backfilled with a high sand content subsoil. Backfill should be added gradually, in layers of 150mm to 230mm depth, ensuring the tree is held upright. At each stage the fill should be eliminated as air pockets under and around the root system, but with care being taken not to excessively compact the soil. The final layer should not be consolidated.
 - General-purpose slow release fertiliser (at the rate of 75g/m²) and Tree Planting and Mulching Compost at the rate of 200t/ha) are to be incorporated into the top 150mm of topsoil during final cultivation.
 - Extra heavy standard trees shall be double staked with 75mm dia. Stakes should be driven at least 300mm into undisturbed ground before planting, the tree, taking care to avoid underground services and cables etc. and should typically be one third the height of the tree stem above ground.
 - Trees shall be secured to stakes with suitable proprietary rubber tree ties and spacers.
 - Immediately after planting, but before applying the below bark mulch, all trees should be saturated to field capacity.
 - Ornamental composted bark mulch will be spread to a depth of 75mm across a 1.0m dia circle around individual trees, ensuring that the root flare and base of the stem, along with any ground cover plants, are not buried.

- Maintenance**
- In the autumn following planting the Landscape contractor will prepare a list of all trees which are dead, dying or diseased and are to be replaced during the following planting season. All stock deemed to be dead, dying or diseased within the defects period shall be replaced by the contractor at his own cost.
 - The site is to be visited quarterly throughout the year to undertake the following operations:
 - Weed clearance: All tree pits are to be kept weed free by hand weeding or herbicide treatment. The bark mulch shall be topped up at least once annually.
 - Litter clearance: All litter is to be removed from tree planting areas.
 - Watering: All trees are to be watered during the growing season following any dry periods of 7 days.
 - Checking trees: All tree ties and stakes are to be checked and adjusted if too loose, too tight or if chaffing is occurring. Any broken stakes are to be replaced.
 - Formative pruning: Any damaged shoots/branches are to be pruned back to healthy wood. Trees are to be pruned in accordance with good horticultural practice (BS 3998) to maintain healthy well-shaped specimens which are appropriately shaped for their circumstances.

- 3. SHRUB / HERBACEOUS PLANTING**
- Shrub/herbaceous plants are to be set out as shown on the drawing and pit planted into the prepared soil at the specified densities with minimal disturbance to the rootball and well firmed in.
 - Recommended rooting depths are 600mm for shrub/herbaceous plants. Multi-purpose topsoil depths shall be 300mm for shrub/herbaceous, ensuring that a suitable subsoil shall provide the remainder of the minimum rooting depth. Before receiving topsoil, subsoils should be loosened using ripping equipment; this shall be done when the subsoil is dry to encourage soil shattering. All stones and other objects larger than 50 mm shall be removed from the prepared surface.
 - Within the day of planting shrub/herbaceous plants should be saturated to field capacity, this shall be done before applying the below bark mulch.
 - Spread ornamental pine bark mulch to a depth of 75mm across all new planted areas, taking care not to bury groundcover plants.

- 4. BULB PLANTING**
- Bulbs are to be planted at a depth suitable for each species with the base in contact with the bottom of the hole. The removed soil backfilled and firmed on top and, where relevant, the removed plug of turf neatly replaced after planting.
 - Planting should avoid man-made grids and lines, and should group species together in groups of 5-7 plants.
- 5. AMENITY GRASS**
- Preparation**
- Areas to be turfed or seeded shall be sprayed out with a glyphosate herbicide and cultivated to a depth of 100mm removing all weeds, debris and stones over 25mm diameter. The surface shall be raked to smooth flowing contours with a fine filth. Amenity grass areas will receive pre-seeding fertiliser at 70 g/m². Meadow grass areas will not be fertilised.
 - The minimum overall recommended rooting depth for grass is 450mm, the first 150mm shall be made up of a multi-purpose topsoil. It shall be ensured that a suitable subsoil shall provide the remainder of the minimum rooting depth. Before receiving topsoil, subsoils should be loosened using ripping equipment; this shall be done when the subsoil is dry to encourage soil shattering. All stones and other objects larger than 50 mm shall be removed from the prepared surface.
- Turf**
- Turf shall be supplied in accordance with BS3969. It shall be close textured and green in colour and be sufficiently fibrous to withstand handling. Turves shall be regular in shape, 300mm wide and of uniform thickness (minimum 25mm). The grass shall be closely mown and shall not exceed 25mm in height. Turf shall be stacked in piles of up to 1 metre. It shall not be laid in frosty or waterlogged conditions and shall not be stacked in rolls for more than three days. Turfing operations shall be in accordance with BS 4428. Whole turves shall be laid around the perimeter of the area to be turfed. The central area shall be laid in rows with staggered joints, well butted together, working from plants positioned on turves already laid. The turf shall be watered on completion. Any unevenness shall be made good by lifting the turf and adjusting the levels. Should shrinkage occur, fine topsoil shall be brushed into the joints.
- Seeding**
- Grass seed shall be sown either in April/May or September/October during calm weather and not when the ground is frost bound or waterlogged. Seed shall be sown in two equal sowings in transverse directions at 35 g/m² for amenity grass. After sowing the contractor shall lightly rake the seed into intimate contact with the soil.
- Initial Cut**
- When newly seeded amenity grass areas reach 50mm they should be lightly rolled and cut to a height of 25mm. All awnings shall be removed. Any bare patches shall be made good at this time. Amenity grass shall be regularly maintained between 25 and 50mm during the first season after sowing. Long or rough mown grass will be maintained between 50 and 75mm during the first season after sowing.

Key



Planting Schedule

Tree Number	Species	Quantity	Height	Specification	Per Size
1 No.	Carpinus betulus 'Frans Fontaine'	1	18-19m	4000	Extra Heavy Standard Clear Stem min. 200 RB 75L
2 No.	Prunus laurocerasus 'Otto Luyken'	14	14-16m	425-600m	Extra Heavy Standard Clear Stem min. 200 RB 75L
3 No.	Prunus laurocerasus 'Otto Luyken'	14	14-16m	425-600m	Extra Heavy Standard Clear Stem min. 200 RB 75L
4 No.	Betula pendula	14	14-16m	425-600m	Extra Heavy Standard Clear Stem min. 200 RB 75L
5 No.	Betula utilis 'Jacquemontii'	14	14-16m	425-600m	Extra Heavy Standard Clear Stem min. 200 RB 75L
6 No.	Prunus laurocerasus 'Otto Luyken'	14	14-16m	425-600m	Extra Heavy Standard Clear Stem min. 200 RB 75L
7 No.	Prunus laurocerasus 'Otto Luyken'	14	14-16m	425-600m	Extra Heavy Standard Clear Stem min. 200 RB 75L
8 No.	Prunus laurocerasus 'Otto Luyken'	14	14-16m	425-600m	Extra Heavy Standard Clear Stem min. 200 RB 75L
9 No.	Prunus laurocerasus 'Otto Luyken'	14	14-16m	425-600m	Extra Heavy Standard Clear Stem min. 200 RB 75L
10 No.	Prunus laurocerasus 'Otto Luyken'	14	14-16m	425-600m	Extra Heavy Standard Clear Stem min. 200 RB 75L
11 No.	Prunus laurocerasus 'Otto Luyken'	14	14-16m	425-600m	Extra Heavy Standard Clear Stem min. 200 RB 75L
12 No.	Prunus laurocerasus 'Otto Luyken'	14	14-16m	425-600m	Extra Heavy Standard Clear Stem min. 200 RB 75L
13 No.	Prunus laurocerasus 'Otto Luyken'	14	14-16m	425-600m	Extra Heavy Standard Clear Stem min. 200 RB 75L
14 No.	Prunus laurocerasus 'Otto Luyken'	14	14-16m	425-600m	Extra Heavy Standard Clear Stem min. 200 RB 75L
15 No.	Prunus laurocerasus 'Otto Luyken'	14	14-16m	425-600m	Extra Heavy Standard Clear Stem min. 200 RB 75L
16 No.	Prunus laurocerasus 'Otto Luyken'	14	14-16m	425-600m	Extra Heavy Standard Clear Stem min. 200 RB 75L
17 No.	Prunus laurocerasus 'Otto Luyken'	14	14-16m	425-600m	Extra Heavy Standard Clear Stem min. 200 RB 75L
18 No.	Prunus laurocerasus 'Otto Luyken'	14	14-16m	425-600m	Extra Heavy Standard Clear Stem min. 200 RB 75L
19 No.	Prunus laurocerasus 'Otto Luyken'	14	14-16m	425-600m	Extra Heavy Standard Clear Stem min. 200 RB 75L
20 No.	Prunus laurocerasus 'Otto Luyken'	14	14-16m	425-600m	Extra Heavy Standard Clear Stem min. 200 RB 75L
21 No.	Prunus laurocerasus 'Otto Luyken'	14	14-16m	425-600m	Extra Heavy Standard Clear Stem min. 200 RB 75L
22 No.	Prunus laurocerasus 'Otto Luyken'	14	14-16m	425-600m	Extra Heavy Standard Clear Stem min. 200 RB 75L
23 No.	Prunus laurocerasus 'Otto Luyken'	14	14-16m	425-600m	Extra Heavy Standard Clear Stem min. 200 RB 75L
24 No.	Prunus laurocerasus 'Otto Luyken'	14	14-16m	425-600m	Extra Heavy Standard Clear Stem min. 200 RB 75L
25 No.	Prunus laurocerasus 'Otto Luyken'	14	14-16m	425-600m	Extra Heavy Standard Clear Stem min. 200 RB 75L
26 No.	Prunus laurocerasus 'Otto Luyken'	14	14-16m	425-600m	Extra Heavy Standard Clear Stem min. 200 RB 75L
27 No.	Prunus laurocerasus 'Otto Luyken'	14	14-16m	425-600m	Extra Heavy Standard Clear Stem min. 200 RB 75L
28 No.	Prunus laurocerasus 'Otto Luyken'	14	14-16m	425-600m	Extra Heavy Standard Clear Stem min. 200 RB 75L
29 No.	Prunus laurocerasus 'Otto Luyken'	14	14-16m	425-600m	Extra Heavy Standard Clear Stem min. 200 RB 75L
30 No.	Prunus laurocerasus 'Otto Luyken'	14	14-16m	425-600m	Extra Heavy Standard Clear Stem min. 200 RB 75L
31 No.	Prunus laurocerasus 'Otto Luyken'	14	14-16m	425-600m	Extra Heavy Standard Clear Stem min. 200 RB 75L
32 No.	Prunus laurocerasus 'Otto Luyken'	14	14-16m	425-600m	Extra Heavy Standard Clear Stem min. 200 RB 75L
33 No.	Prunus laurocerasus 'Otto Luyken'	14	14-16m	425-600m	Extra Heavy Standard Clear Stem min. 200 RB 75L
34 No.	Prunus laurocerasus 'Otto Luyken'	14	14-16m	425-600m	Extra Heavy Standard Clear Stem min. 200 RB 75L
35 No.	Prunus laurocerasus 'Otto Luyken'	14	14-16m	425-600m	Extra Heavy Standard Clear Stem min. 200 RB 75L
36 No.	Prunus laurocerasus 'Otto Luyken'	14	14-16m	425-600m	Extra Heavy Standard Clear Stem min. 200 RB 75L
37 No.	Prunus laurocerasus 'Otto Luyken'	14	14-16m	425-600m	Extra Heavy Standard Clear Stem min. 200 RB 75L
38 No.	Prunus laurocerasus 'Otto Luyken'	14	14-16m	425-600m	Extra Heavy Standard Clear Stem min. 200 RB 75L
39 No.	Prunus laurocerasus 'Otto Luyken'	14	14-16m	425-600m	Extra Heavy Standard Clear Stem min. 200 RB 75L
40 No.	Prunus laurocerasus 'Otto Luyken'	14	14-16m	425-600m	Extra Heavy Standard Clear Stem min. 200 RB 75L
41 No.	Prunus laurocerasus 'Otto Luyken'	14	14-16m	425-600m	Extra Heavy Standard Clear Stem min. 200 RB 75L
42 No.	Prunus laurocerasus 'Otto Luyken'	14	14-16m	425-600m	Extra Heavy Standard Clear Stem min. 200 RB 75L
43 No.	Prunus laurocerasus 'Otto Luyken'	14	14-16m	425-600m	Extra Heavy Standard Clear Stem min. 200 RB 75L
44 No.	Prunus laurocerasus 'Otto Luyken'	14	14-16m	425-600m	Extra Heavy Standard Clear Stem min. 200 RB 75L
45 No.	Prunus laurocerasus 'Otto Luyken'	14	14-16m	425-600m	Extra Heavy Standard Clear Stem min. 200 RB 75L
46 No.	Prunus laurocerasus 'Otto Luyken'	14	14-16m	425-600m	Extra Heavy Standard Clear Stem min. 200 RB 75L
47 No.	Prunus laurocerasus 'Otto Luyken'	14	14-16m	425-600m	Extra Heavy Standard Clear Stem min. 200 RB 75L
48 No.	Prunus laurocerasus 'Otto Luyken'	14	14-16m	425-600m	Extra Heavy Standard Clear Stem min. 200 RB 75L
49 No.	Prunus laurocerasus 'Otto Luyken'	14	14-16m	425-600m	Extra Heavy Standard Clear Stem min. 200 RB 75L
50 No.	Prunus laurocerasus 'Otto Luyken'	14	14-16m	425-600m	Extra Heavy Standard Clear Stem min. 200 RB 75L
51 No.	Prunus laurocerasus 'Otto Luyken'	14	14-16m	425-600m	Extra Heavy Standard Clear Stem min. 200 RB 75L
52 No.	Prunus laurocerasus 'Otto Luyken'	14	14-16m	425-600m	Extra Heavy Standard Clear Stem min. 200 RB 75L
53 No.	Prunus laurocerasus 'Otto Luyken'	14	14-16m	425-600m	Extra Heavy Standard Clear Stem min. 200 RB 75L
54 No.	Prunus laurocerasus 'Otto Luyken'	14	14-16m	425-600m	Extra Heavy Standard Clear Stem min. 200 RB 75L
55 No.	Prunus laurocerasus 'Otto Luyken'	14	14-16m	425-600m	Extra Heavy Standard Clear Stem min. 200 RB 75L
56 No.	Prunus laurocerasus 'Otto Luyken'	14	14-16m	425-600m	Extra Heavy Standard Clear Stem min. 200 RB 75L
57 No.	Prunus laurocerasus 'Otto Luyken'	14	14-16m	425-600m	Extra Heavy Standard Clear Stem min. 200 RB 75L
58 No.	Prunus laurocerasus 'Otto Luyken'	14	14-16m	425-600m	Extra Heavy Standard Clear Stem min. 200 RB 75L
59 No.	Prunus laurocerasus 'Otto Luyken'	14	14-16m	425-600m	Extra Heavy Standard Clear Stem min. 200 RB 75L
60 No.	Prunus laurocerasus 'Otto Luyken'	14	14-16m	425-600m	Extra Heavy Standard Clear Stem min. 200 RB 75L
61 No.	Prunus laurocerasus 'Otto Luyken'	14	14-16m	425-600m	Extra Heavy Standard Clear Stem min. 200 RB 75L
62 No.	Prunus laurocerasus 'Otto Luyken'	14	14-16m	425-600m	Extra Heavy Standard Clear Stem min. 200 RB 75L
63 No.	Prunus laurocerasus 'Otto Luyken'	14	14-16m	425-600m	Extra Heavy Standard Clear Stem min. 200 RB 75L
64 No.	Prunus laurocerasus 'Otto Luyken'	14	14-16m	425-600m	Extra Heavy Standard Clear Stem min. 200 RB 75L
65 No.	Prunus laurocerasus 'Otto Luyken'	14	14-16m	425-600m	Extra Heavy Standard Clear Stem min. 200 RB 75L
66 No.	Prunus laurocerasus 'Otto Luyken'	14	14-16m	425-600m	Extra Heavy Standard Clear Stem min. 200 RB 75L
67 No.	Prunus laurocerasus 'Otto Luyken'	14	14-16m	425-600m	Extra Heavy Standard Clear Stem min. 200 RB 75L
68 No.	Prunus laurocerasus 'Otto Luyken'	14	14-16m	425-600m	Extra Heavy Standard Clear Stem min. 200 RB 75L
69 No.	Prunus laurocerasus 'Otto Luyken'	14	14-16m	425-600m	Extra Heavy Standard Clear Stem min. 200 RB 75L
70 No.	Prunus laurocerasus 'Otto Luyken'	14	14-16m	425-600m	Extra Heavy Standard Clear Stem min. 200 RB 75L
71 No.	Prunus laurocerasus 'Otto Luyken'	14	14-16m	425-600m	Extra Heavy Standard Clear Stem min. 200 RB 75L
72 No.	Prunus laurocerasus 'Otto Luyken'	14	14-16m	425-600m	Extra Heavy Standard Clear Stem min. 200 RB 75L
73 No.	Prunus laurocerasus 'Otto Luyken'	14	14-16m	425-600m	Extra Heavy Standard Clear Stem min. 200 RB 75L
74 No.	Prunus laurocerasus 'Otto Luyken'	14	14-16m	425-600m	Extra Heavy Standard Clear Stem min. 200 RB 75L
75 No.	Prunus laurocerasus 'Otto Luyken'	14	14-16m	425-600m	Extra Heavy Standard Clear Stem min. 200 RB 75L
76 No.	Prunus laurocerasus 'Otto Luyken'	14	14-16m	425-600m	Extra Heavy Standard Clear Stem min. 200 RB 75L
77 No.	Prunus laurocerasus 'Otto Luyken'	14	14-16m	425-600m	Extra Heavy Standard Clear Stem min. 200 RB 75L
78 No.	Prunus laurocerasus 'Otto Luyken'	14	14-16m	425-600m	Extra Heavy Standard Clear Stem min. 200 RB 75L
79 No.	Prunus laurocerasus 'Otto Luyken'	14	14-16m	425-600m	Extra Heavy Standard Clear Stem min. 200 RB 75L
80 No.	Prunus laurocerasus 'Otto Luyken'	14	14-16m	425-600m	Extra Heavy Standard Clear Stem min. 200 RB 75L
81 No.	Prunus laurocerasus 'Otto Luyken'	14	14-16m	425-600m	Extra Heavy Standard Clear Stem min. 200 RB 75L
82 No.	Prunus laurocerasus 'Otto Luyken'	14	14-16m	425-600m	Extra Heavy Standard Clear Stem min. 200 RB 75L
83 No.	Prunus laurocerasus 'Otto Luyken'	14	14-16m	425-600m	Extra Heavy Standard Clear Stem min. 200 RB 75L
84 No.	Prunus laurocerasus 'Otto Luyken'	14	14-16m	425-600m	Extra Heavy Standard Clear Stem min. 200 RB 75L
85 No.	Prunus laurocerasus 'Otto Luyken'	14	14-16m	425-600m	Extra Heavy Standard Clear Stem min. 200 RB 75L
86 No.	Prunus laurocerasus 'Otto Luyken'	14	14-16m	425-600m	Extra Heavy Standard Clear Stem min. 200 RB 75L
87 No.	Prunus laurocerasus 'Otto Luyken'	14	14-16m	425-600m	Extra Heavy Standard Clear Stem min. 200 RB 75L
88 No.	Prunus laurocerasus 'Otto Luyken'	14	14-16m	425-600m	Extra Heavy Standard Clear Stem min. 200 RB 75L
89 No.	Prunus laurocerasus 'Otto Luyken'	14	14-16m	425-600m	Extra Heavy Standard Clear Stem min. 200 RB 75L
90 No.	Prunus laurocerasus 'Otto Luyken'	14	14-16m	425-600m	Extra Heavy Standard Clear Stem min. 200 RB 75L
91 No.	Prunus laurocerasus 'Otto Luyken'	14	14-16m	425-600m	Extra Heavy Standard Clear Stem min. 200 RB 75L
92 No.	Prunus laurocerasus 'Otto Luyken'	14	14-16m	425-600m	Extra Heavy Standard Clear Stem min. 200 RB 75L
93 No.	Prunus laurocerasus 'Otto Luyken'	14	14-16m	425-600m	Extra Heavy Standard Clear Stem min. 200 RB 75L
94 No.	Prunus laurocerasus 'Otto Luyken'	14	14-16m	425-600m	Extra Heavy Standard Clear Stem min. 200 RB 75L
95 No.	Prunus laurocerasus 'Otto Luyken'	14	14-16m	425-600m	Extra Heavy Standard Clear Stem min. 200 RB 75L
96 No.	Prunus laurocerasus 'Otto Luyken'	14	14-16m	425-600m	Extra Heavy Standard Clear Stem min. 200 RB 75L
97 No.	Prunus laurocerasus 'Otto Luyken'	14	14-16m	425-600m	Extra Heavy Standard Clear Stem min. 200 RB 75L
98 No.	Prunus laurocerasus 'Otto Luyken'	14	14-16m	425-600m	Extra Heavy Standard Clear Stem min. 200 RB 75L
99 No.	Prunus laurocerasus 'Otto Luyken'	14	14-16m	425-600m	Extra Heavy Standard Clear Stem min. 200 RB 75L
100 No.	Prunus laurocerasus 'Otto Luyken'	14	14-16m	425-600m	Extra Heavy Standard Clear Stem min. 200 RB 75L

Shrub Number	Species
--------------	---------