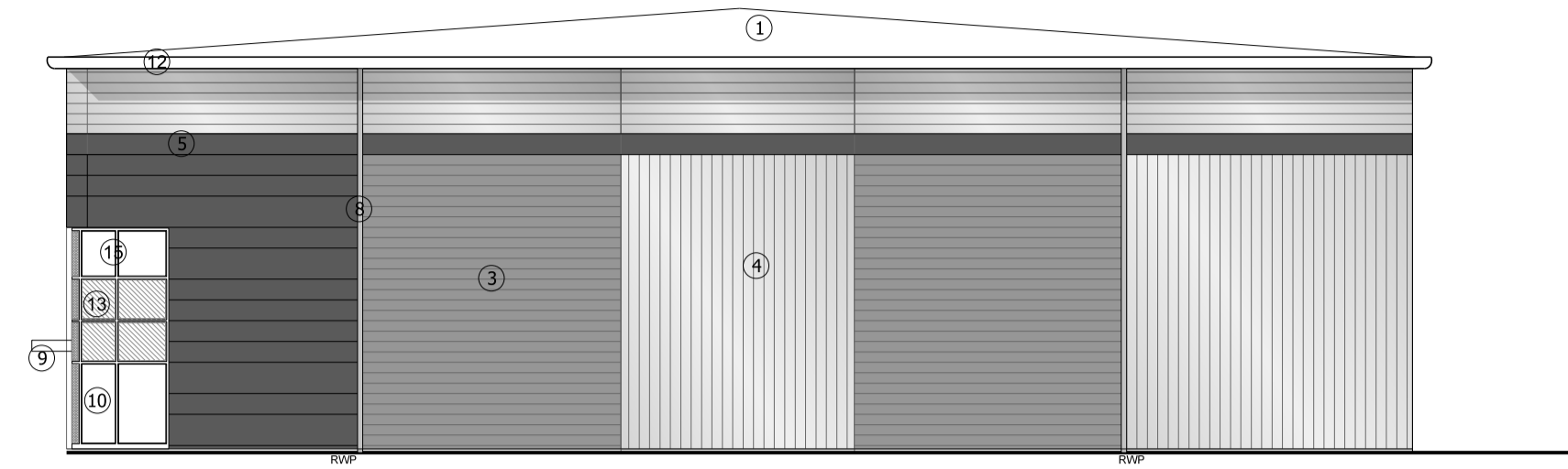


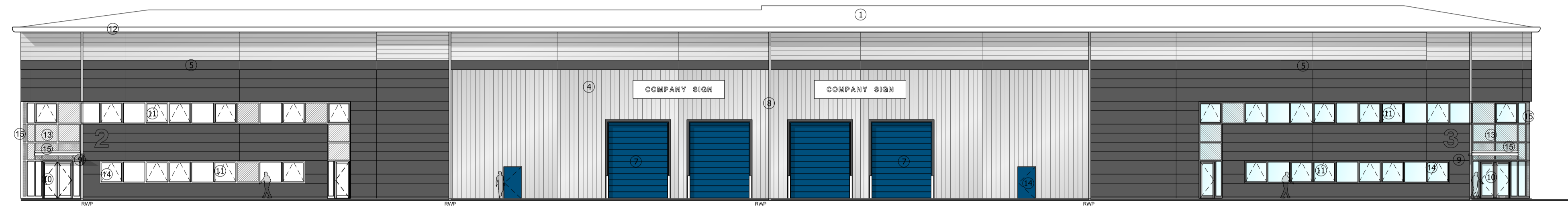
- ① Composite roofing system
- ② Horizontal built-up cladding system - Corus Colorcoat Prisma - Sirius
- ③ Horizontal built-up cladding system - Corus Colorcoat Prisma - Orion
- ④ Vertical built-up cladding system - Corus Colorcoat Prisma - Sirius
- ⑤ Microrib composite cladding - Corus Colorcoat Prisma - Zeus
- ⑥ Steel fire escape door, colour RAL 7016
- ⑦ Loading door, colour RAL 5010
- ⑧ Rainwater pipe, colour Sirius
- ⑨ Main entrance canopy 1.5m projection, painted steel frame
- ⑩ PPC Aluminium double glazed curtain walling, colour RAL 7016
- ⑪ PPC Aluminium double glazed windows, colour RAL 7016
- ⑫ Eaves and verge flashings, colour Sirius
- ⑬ Look-a-like panels - obscured glass
- ⑭ Steel fire escape door, colour RAL 5010
- ⑮ Aluminium insulated panel polyester powder coated to match framig

Subject to Statutory Approvals.

All dimensions to be checked on site prior to commencement of work.



01 South Elevation  
2011



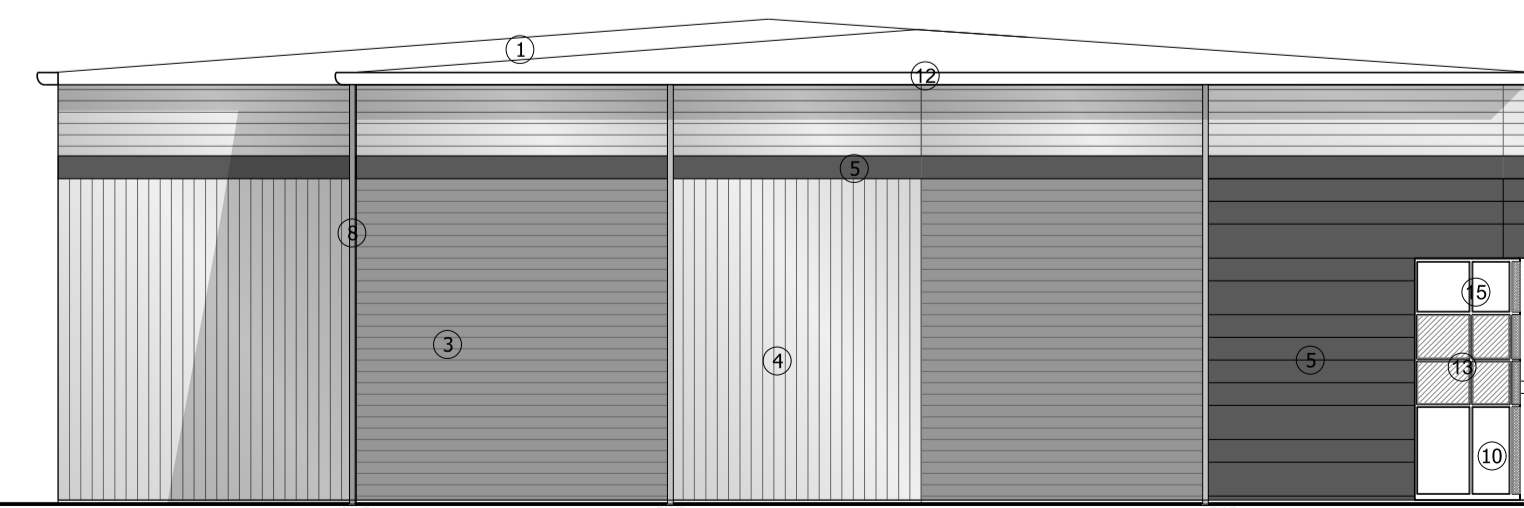
02 West Elevation  
2011

Plot Boundary



03 East Elevation  
2011

Plot Boundary



04 North Elevation  
2011

Plot Boundary

|     |  |      |          |
|-----|--|------|----------|
| A   | Windows, canopy and eaves colour updated | CG   | 01.02.18 |
| Rev | Description                              | Chkd | Date     |

Peer House  
8 -14 Verulam Street  
London WC1X 8LZ

tel +44(0)20 7400 2120

enquiries@cornisharchitects.com  
www.cornisharchitects.com

cornisharchitects

Project  
**LINK 9 - SKIMMINGDISH LANE  
BICESTER  
PLOT 2**

Org Title  
**Elevations - Unit B & C  
Zone 02**

Status  
**PLANNING**

0 10 m

Scale 1:200 @ A1 Date 09/08/2017

Org No 17007 / TP /2011 Rev A