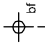
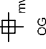
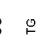


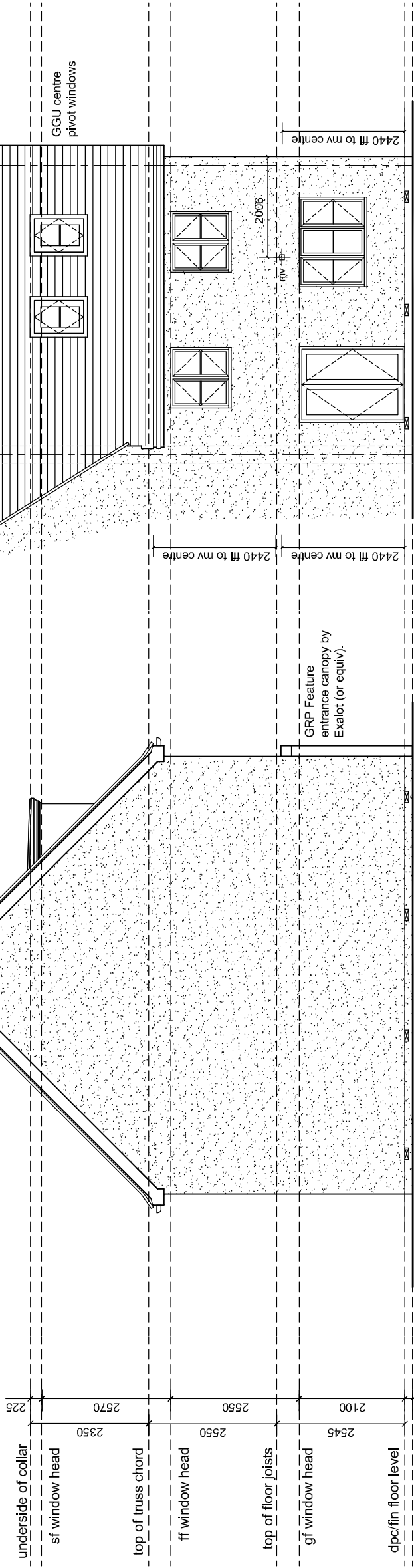


-  Boiler flue terminal (2150 AFFL)
-  Mechanical ventilation terminal
-  Obscure glazing
-  Toughened glass
-  Air brick to PCC floor

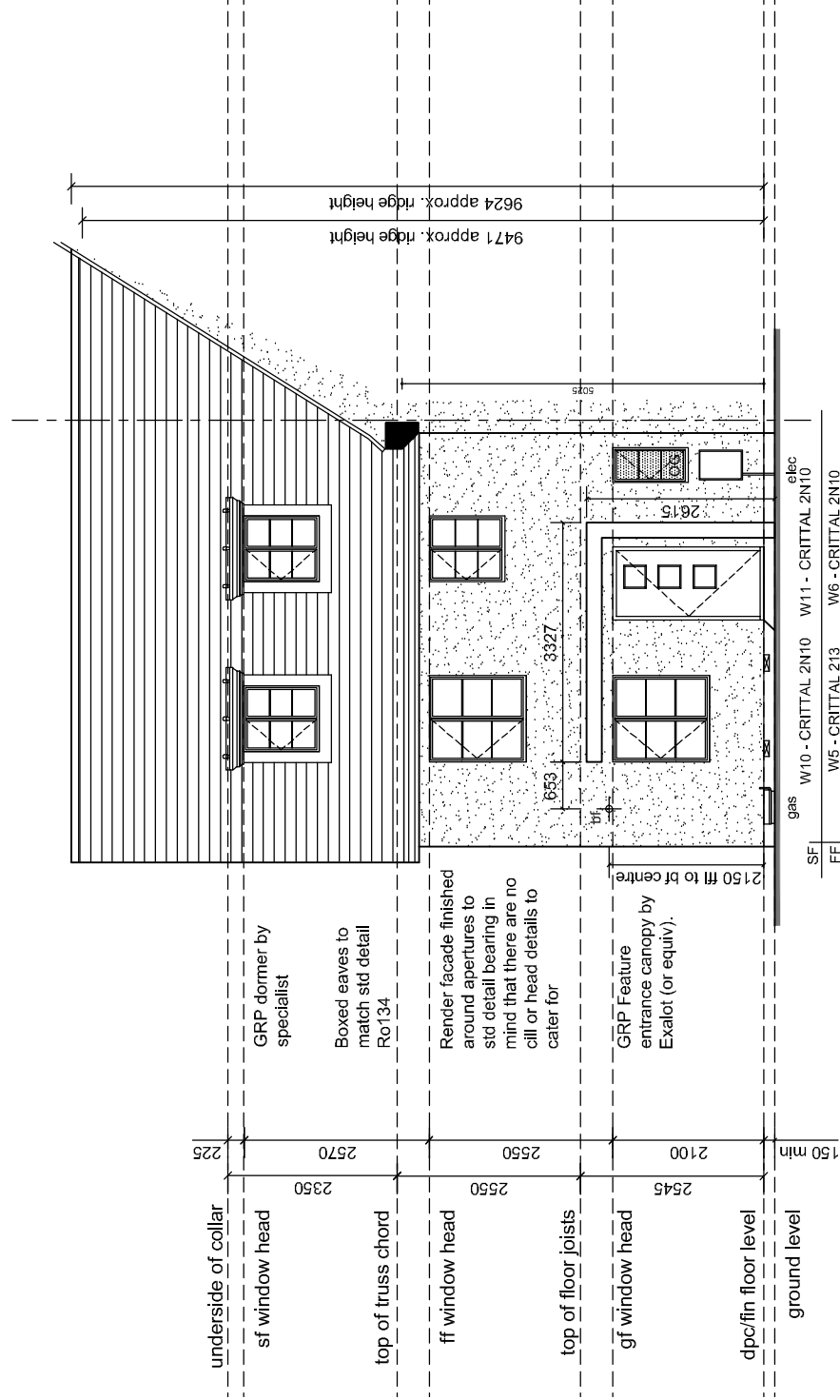
ALL MATERIALS TO BE IN ACCORDANCE WITH EXTERNAL FINISHES SCHEDULE



### SIDE ELEVATION

Plots 290-291 illustrated

SF	W13 - 660 x 1180 ROOF	W14 - 660 x 1180 ROOF
FF	W8 - H212 - EW	W9 - H212 - EW
GF	D2 - FCP 150	W3 - H313



### FRONT ELEVATION

Plots 291-290 illustrated

SF	W10 - CRITTAL 2N10	W11 - CRITTAL 2N10
FF	W5 - CRITTAL 213	W6 - CRITTAL 2N10
GF	W1 - CRITTAL 213	D1 - Non Std
		W2CRITTAL N10C

B 06.12.16 AH - Landmark planning version for plot 291 renamed as P409VT1 and extracted from previous working drawing for type P409VT. Changes include change of window style and sizes including bay window omission from kitchen and additional dormer window to Bedroom 1. Feature GRP entrance canopy. Entrance door repositioned. Chimney omitted. Facade changed to rendered finish. Eaves style changed to 200mm boxed. Rear wall alignment with adjacent plot 290 now flush.

A 24.11.16 AH - Drawing taken from portfolio Rev F. Amendments made to match planning drawings for Upper Heyford B6 - including eaves, head & cill details, dormer window removed and replaced with rooflight and entrance / bay canopy altered from hipped to flat with pier and post removed. Chimney added. Adjacent plots illustrated.

SITE/DRAWING REF:

Upper Heyford  
Phase B6

DRAWING TITLE:  
P409VT1 (Landmark)  
Elevation in Brick  
rev B



B6 PLOTS:  
AS - 291  
HANDED - None