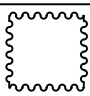

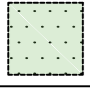
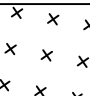




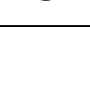
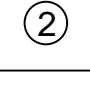
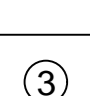


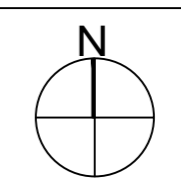
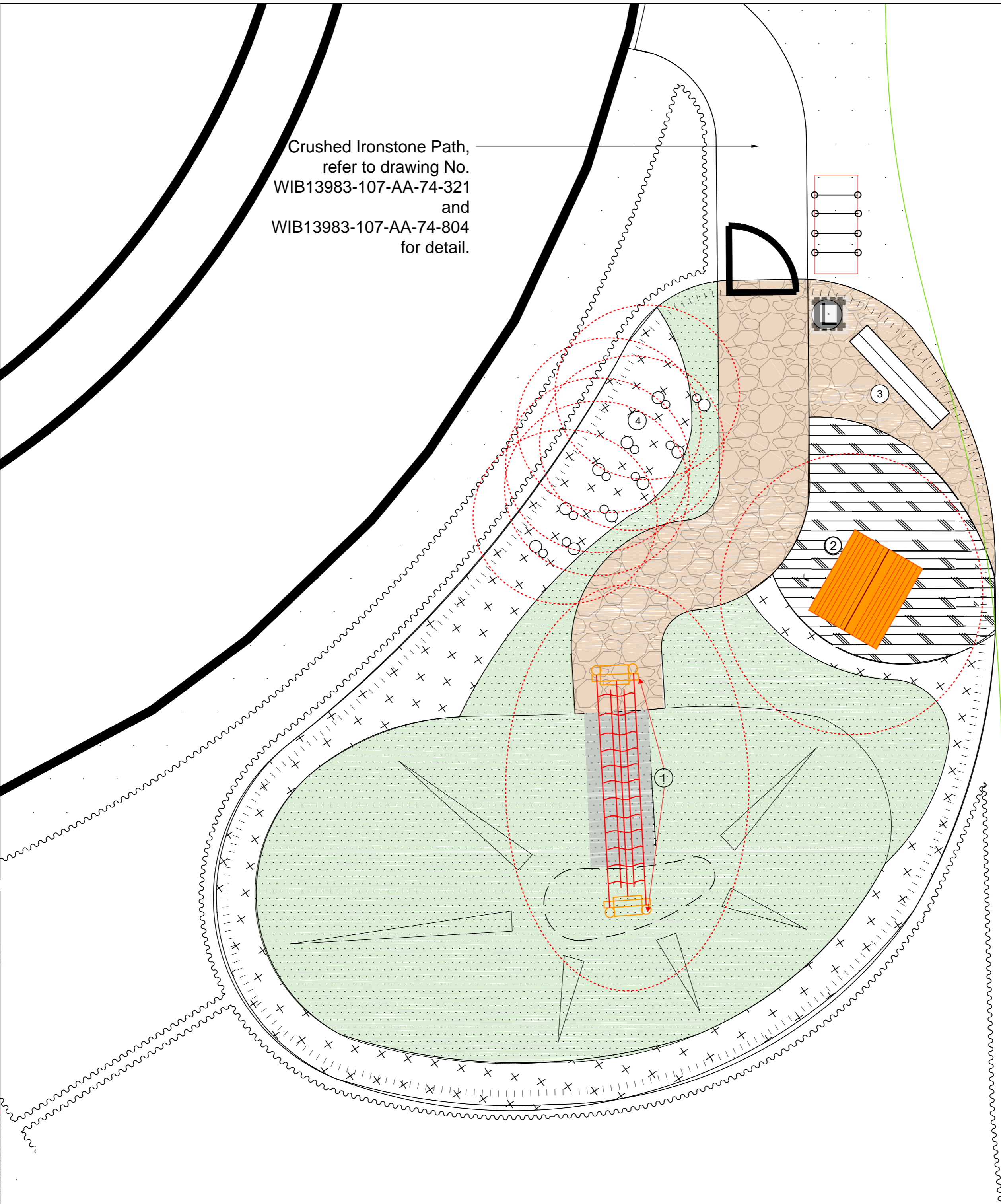
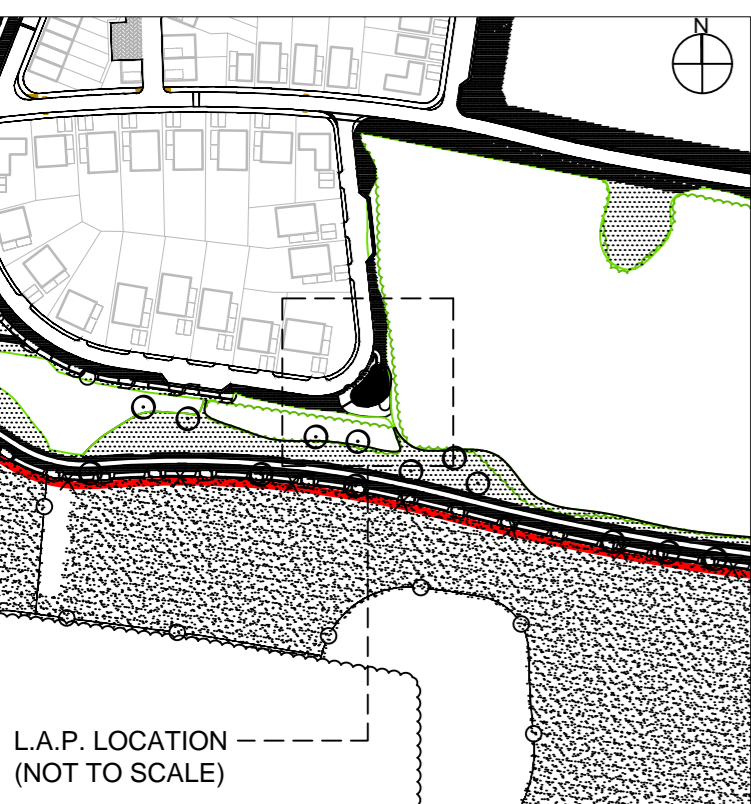
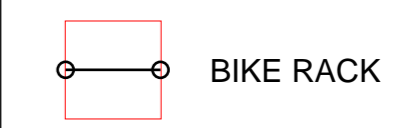


-  **PROPOSED PLANTING**
Refer to Drawing no: WIB13983-107-AA-74-221 for planting details.
-  **PROPOSED CRUSHED IRONSTONE SURFACE**
Refer to detail on Drawing No: WIB13983-107-AA-74-804
-  **PROPOSED AMENITY GRASS**
Tillers 'Low Maintenance Turf' or similar approved, supplied to BS3969. Over 150mm min. topsoil and 350mm subsoil.
-  **PROPOSED WILDFLOWER MEADOW.**
Disturbed ground: Boston Seeds 'BS5: Heavy Clay Soils Mixture' or similar approved at 5g/m².
Undisturbed ground: Boston Seeds 'BSRE 100%: Restore & Enrich Mixture' or similar approved at 3g/m².
-  **PROPOSED PLAY AREA FENCING**
M & M Timber 'Unilog Pro Landscaping timber' or equal and approved. 750mm - 1200mm high. Refer to detail on Drawing No: WIB13983-107-AA-74-806
-  **PROPOSED SELF CLOSING GATE**
Jackson's 'Anti Trap Bow Top Gate' or equal and approved. Galvanised and powder coated colour black (RAL 9005). 1000mm height x 1110mm width. Conforms to BS EN 1176 play fence standards.
-  **L3.66510 - Support Frame, installation on a slope, h=0.6m + 3.66560 Rope Bridge, length 4m**
-  **4.10105 - Very Small Play House made of larch**
-  **PROPOSED SEATING UNIT**
L9.20000 - Bench on legs with back
-  **3.12100 - Stepping logs x 6**
-  **PROPOSED GRASS MOUND**
Gradient at 1:3. (Engineered batter) Refer to specification for detail.
-  **LITTER BINS**
Timber waste bin with stainless steel insert
-  **PROPOSED BARK MULCH SURFACE**
Refer to detail on Drawing No: WIB13983-107-AA-74-805



----- Safe Fall Zone
Incorporating SAFA Grass Mats



*Please note that the curve of path (by others) need to be adjusted slightly or shortened, so it does not encroach on the fall zones of Bridge and Play House.

Rev	Date	Description	By
-----	------	-------------	----

Amendments

Project
GRAVEN HILL, BICESTER

Title
Conceptual, 606 Play Area Proposal
Conceptual General Arrangement Plan



COPYRIGHT: All rights to the design and equipment lie with Timberplay Ltd. and Richter GmbH. This drawing is the property of Timberplay Ltd. Copyright is reserved by them and the drawing issued on the condition that it is not copied, reproduced, retained or disclosed to any unauthorized person either wholly or in part without the consent of Timberplay.

Drawing Status
PLANNING

Designed by	Checked by	MR	Quotation No.	Q12386-S-01
Drawn by	Date	29-11-17	Kings C0281 - L.A.P -221 -PL	
Scales @:				
Publisher	Zone	Category	Number	Revision
			606	B