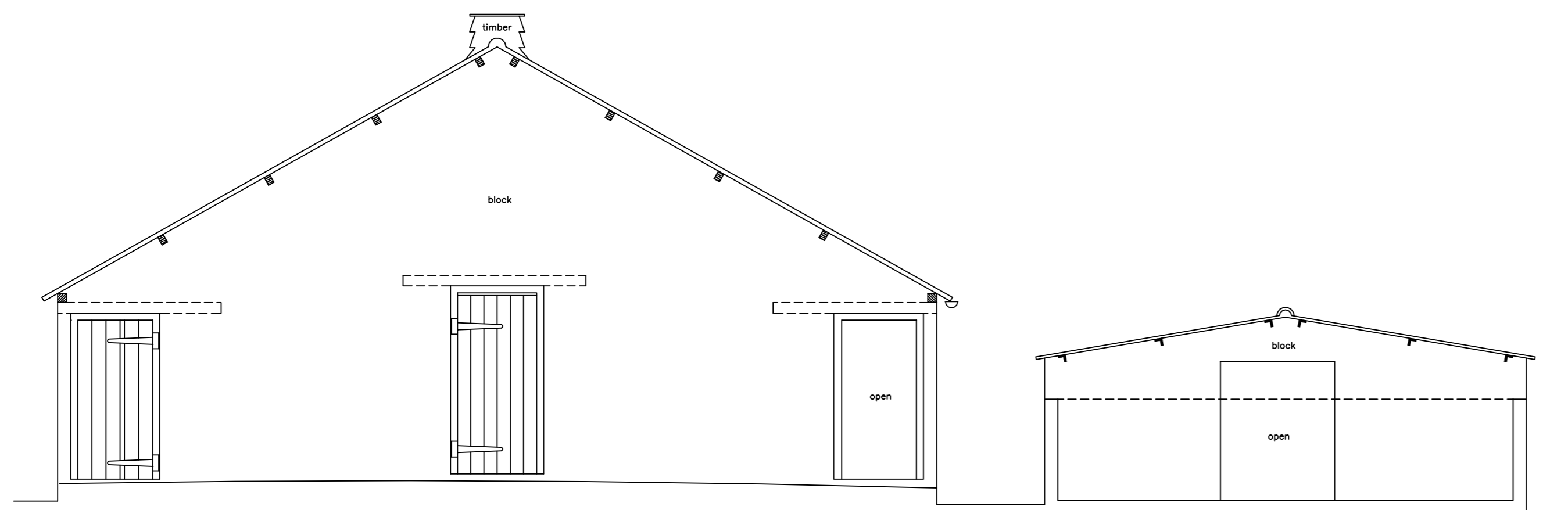


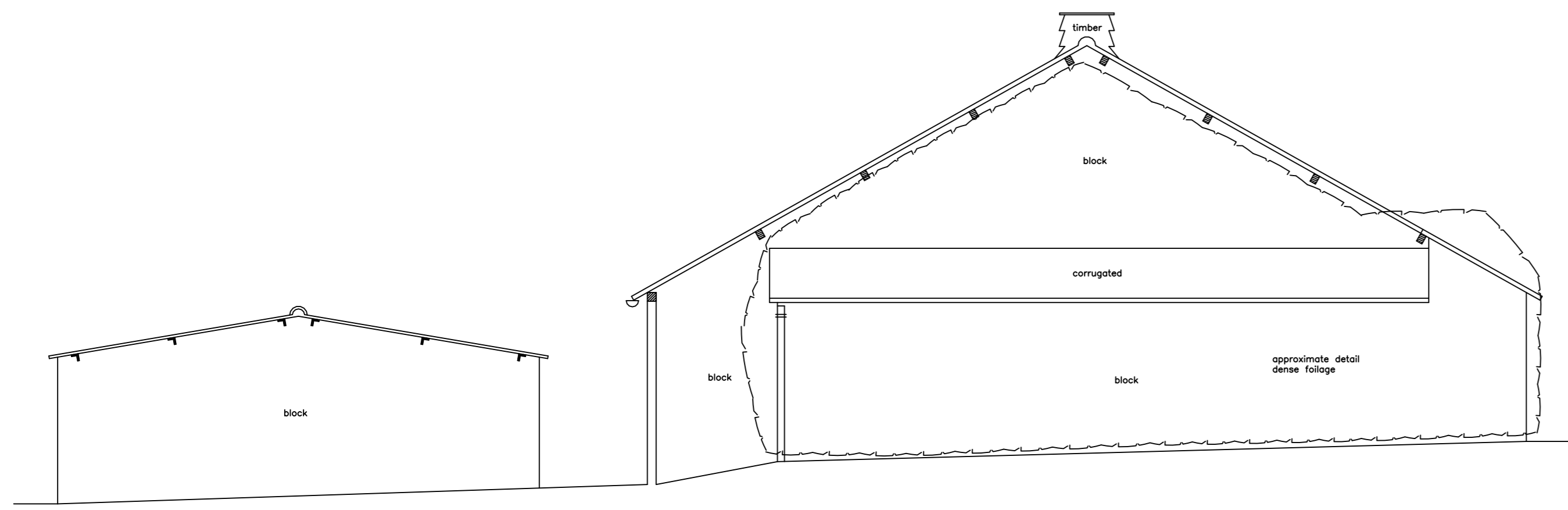
Datum 139.00m

SECTION A - A



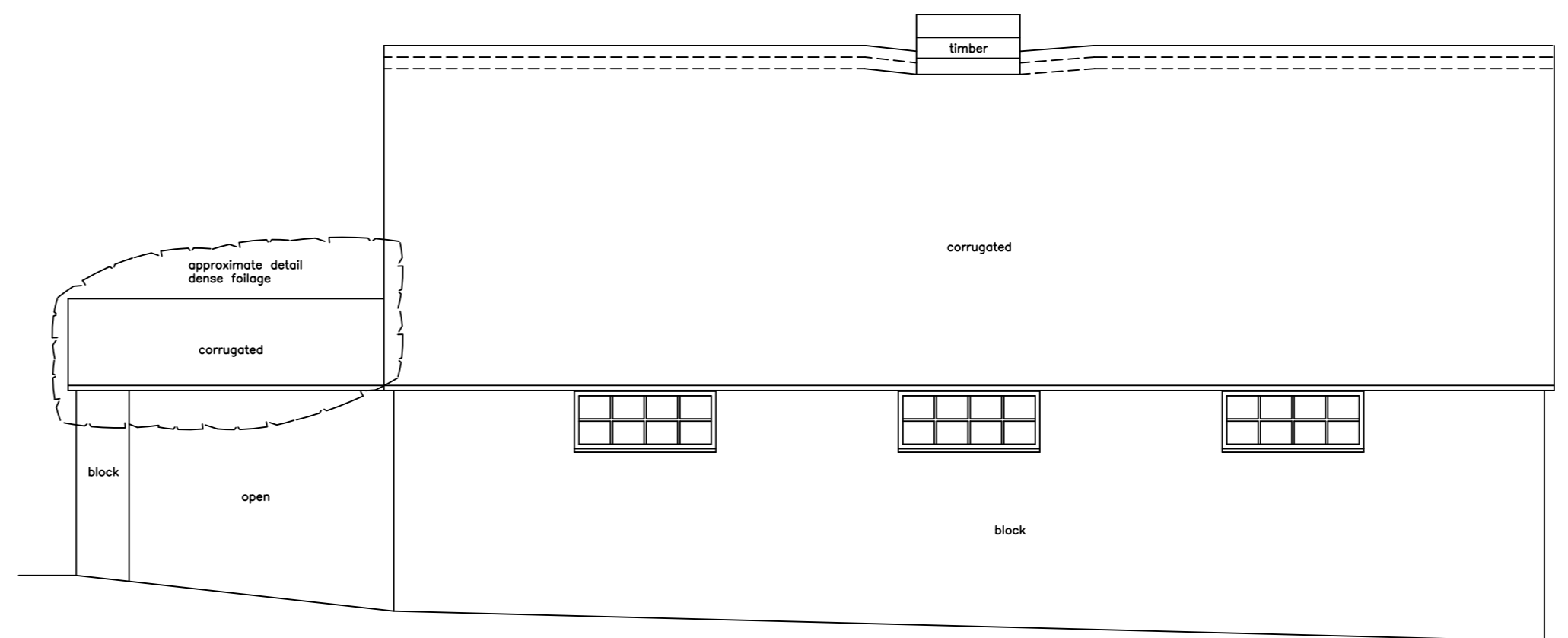
Datum 139.00m

WEST ELEVATION



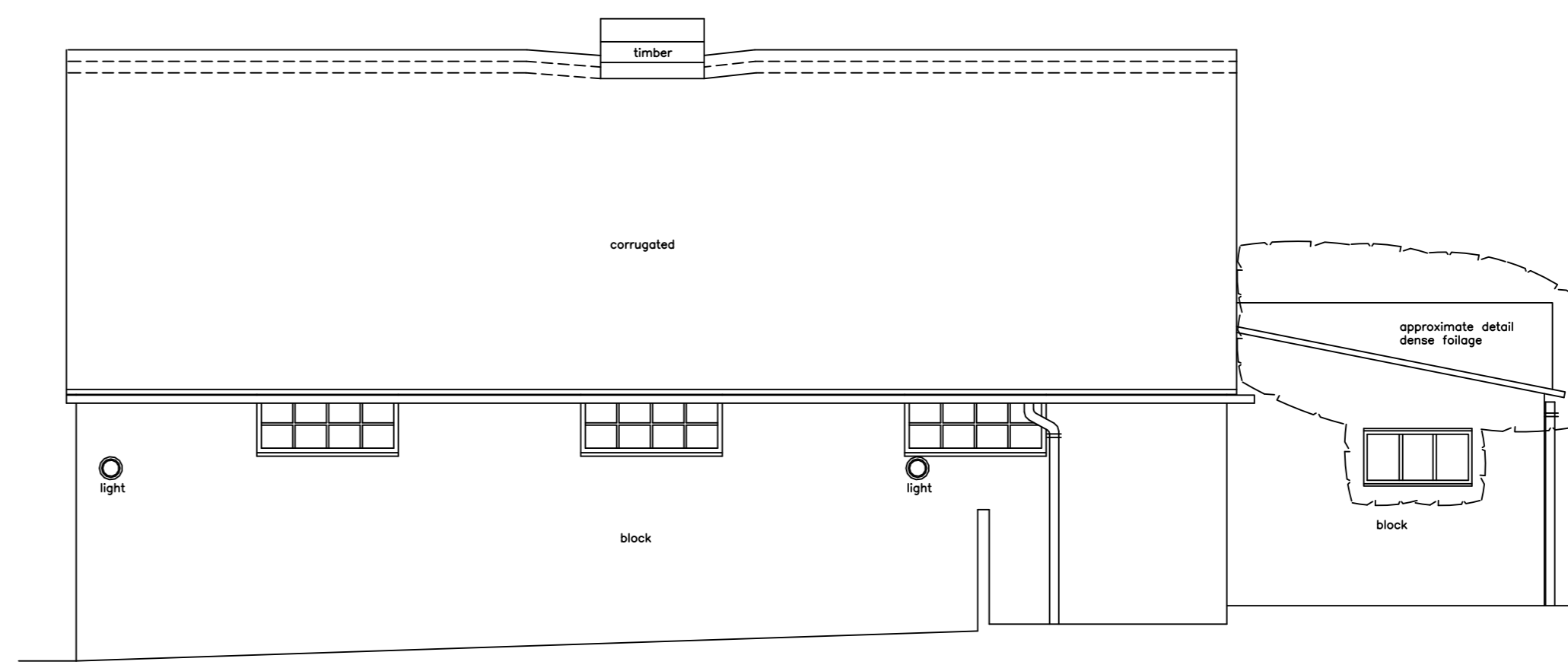
Datum 139.00m

EAST ELEVATION



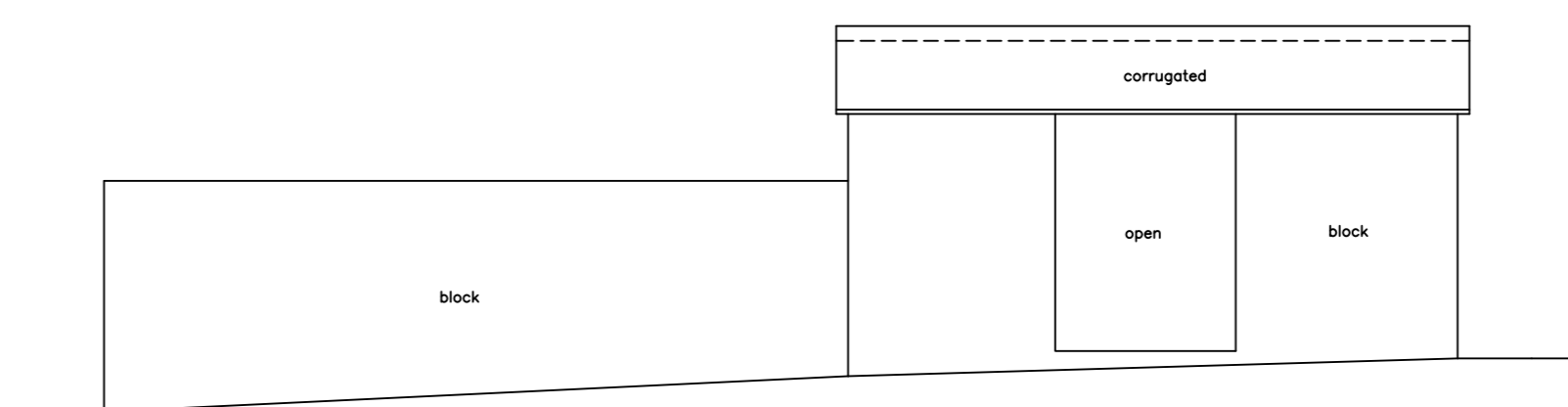
Datum 139.00m

NORTH ELEVATION



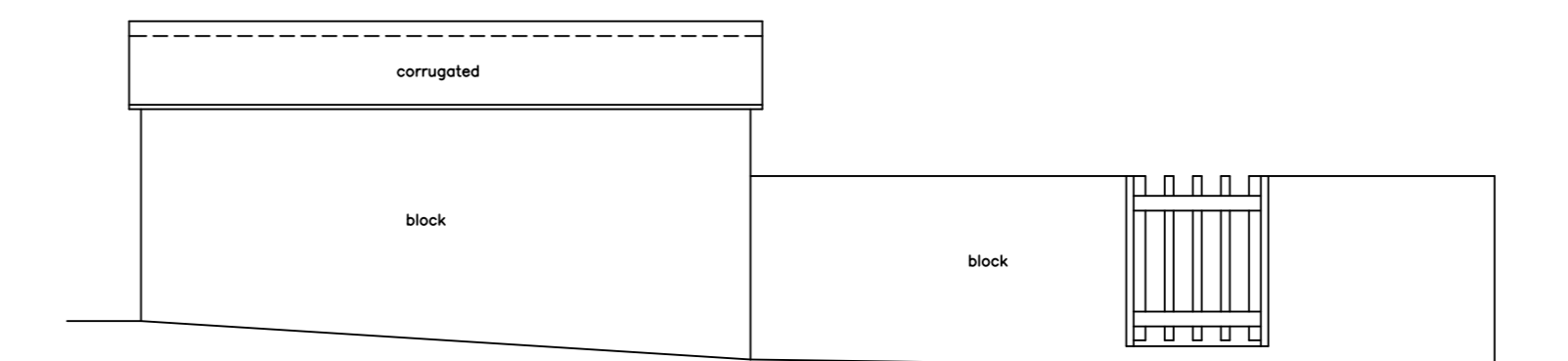
Datum 139.00m

SOUTH ELEVATION



Datum 139.00m

SOUTH ELEVATION  
(SMALLER BUILDING)



Datum 139.00m

NORTH ELEVATION  
(SMALLER BUILDING)

**NOTES**

**GENERAL NOTES :-**

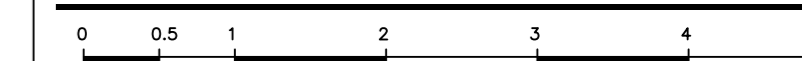
ALL LEVELS ARE IN METRES DERIVED FROM GPS TRANSFORMATION.  
THIS DRAWING HAS BEEN PRODUCED WITH A PLOT SCALE ACCURACY OF 1:50

**BUILDING SURVEY KEY :-**

- |                           |                                   |
|---------------------------|-----------------------------------|
| 1.5 - room height         | hw - hot water tank               |
| 1/b - floor boards        | ic - inspection cover             |
| # - pipe diameter         | il - invert level                 |
| a/b - air brick           | mb - manhole cover                |
| ab - alarm box            | OSBM - Ordnance Survey bench mark |
| ah - arch head            | q/dies - quarry files             |
| bd - back drop            | rd - radator                      |
| bk - brick                | rl - roof light                   |
| conc - concrete           | rwp - rain water pipe             |
| cr - cable riser          | sfc - soil filled chamber         |
| db - fuse box             | sh - floor to sill height         |
| dh - door height          | sp - arch springing point         |
| dp - depth                | sp - soil pipe                    |
| e/mtr - electricity metre | susc - suspended ceiling          |
| elec - electricity        | svp - soil vent pipe              |
| f/b - fire block          | Lrall - heated towel rail         |
| fl - floor level          | TBM - temporary bench mark        |
| fr - floor to head height | tl - threshold level              |
| fs - floor to sill height | top - top of cap                  |
| g/mtr - gas metre         | top - top of pipe                 |
| gr - gas riser            | tot - top of tank                 |
| hd - hand dryer           | u/s - underside height            |
| hr - heater               | U/L - unable to lift              |
|                           | vp - vent pipe                    |
|                           | wf - water fountain               |
|                           | wfc - water filled chamber        |
|                           | wp - waste pipe                   |

**SERVICES KEY :-**

- |                                |     |                          |
|--------------------------------|-----|--------------------------|
| strip light                    | ALJ | alarm keypad             |
| light                          | AK  | intercom                 |
| wall light                     | IN  | alarm control panel      |
| emergency light                | ACP | speaker                  |
| spot light                     | SPK | projector                |
| pull cord                      | PRG | closed circuit tv        |
| vent/extractor                 | CCV | sensor                   |
| switch                         | LJ  | network point            |
| light switch                   | NC  | coaxial aerial           |
| fused switch                   | LV  | smoke detector           |
| isolator switch                | S   | heat detector            |
| cooker switch                  | LD  | fire alarm siren         |
| fuse                           | LD  | fire breakglass          |
| blank socket                   | CA  | fire sprinkler           |
| single socket                  | B   | fire blanket             |
| double socket                  | LJ  | water fire extinguisher  |
| ceiling socket/fuse/switch     | LD  | co2 fire extinguisher    |
| thermostat                     | LD  | powder fire extinguisher |
| card access point (swipe card) | LD  | fire extinguisher        |
| emergency door release         | LD  | fire alarm control panel |
|                                | DR  |                          |



**MIDLAND SURVEY LTD**

HEAD OFFICE  
Cromwell House, Westfield Road, Southam, Warwickshire, CV47 0JH.  
Tel: 01926 810811 Fax: 01926 810812  
E-Mail: mail@midlandsurvey.co.uk  
www.midlandsurvey.co.uk

Client FRAMPTONS

Project MIRANERE, 5 THE COLONY, SIBFORD GOWER

Title SECTION / ELEVATIONS

Date NOVEMBER 2016 Revisions

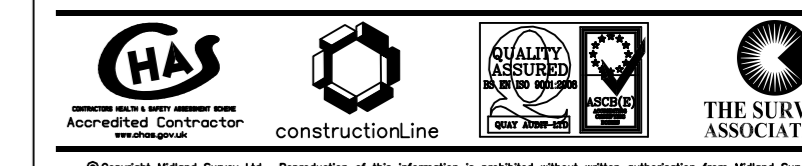
Scale 1:50BA1

Dwg No 27111 / 3

Surveyor S.J.M

Checked J.M.P

TOPOGRAPHICAL (LAND) SURVEYORS / UTILITY SURVEYORS  
BUILDING MEASUREMENT SURVEYORS / 3D LASER SCANNING



© Copyright Midland Survey Ltd. Reproduction of this information is prohibited without written authorisation from Midland Survey Ltd.