

Legend

PUBLIC_RIGHTS_OF_WAY

STATUS

- Public Footpath
- Public Bridleway
- Restricted Byway
- Byway Open to all Traffic
- SWIFT_RECORDS
- PROTECTED_AND_NOTABLE_SPECIES
- PROTECTED_SPECIES_BUFFER
- ROAD_VERGE_NATURE_RESERVES
- EIL_TEXT
- ASSETS OF COMMUNITY VALUE

- Area TPOs
- Group TPOs
- TPO Trees
- Woodland TPOs

LISTED BUILDINGS

GRADE

- I
- II*
- II
- DL
- CURTILAGE LISTING
- LOCALLY_LISTED_BUILDINGS
- ARTICLE_4
- ARCHAEOLOGICAL_CONSTRAINT_PRIORITY_AREAS
- SCHEDULED_ANCIENT_MONUMENT
- EIL_REGIONS
- PONDS_MAPPING (INCLUDING GREAT CRESTED NEWTS)
- NERC ACT S41 Habitats (Previously UKBAP PRIORITY HABITATS)
- REGISTERED_COMMON_LAND
- SPECIAL_SITES_OF_SCIENTIFIC_INTEREST
- SPECIAL_AREAS_OF_CONSERVATION
- ANCIENT_WOODLAND
- CONSERVATION_AREAS
- DISTRICT_WILDLIFE_SITES
- LOCAL_WILDLIFE_SITES
- PROPOSED_NEW_LWS_AND_EXTENSIONS_LWS
- LOCAL_NATURE_RESERVE
- PARKS_AND_GARDENS
- AREAS_OF_OUTSTANDING_NATURAL_BEAUTY
- RAILWAY_TUNNEL
- HIGH_PRESSURE_GAS_PIPELINES
- LGS_POINTS
- LGS_POLYGONS

POTENTIALLY_CONTAMINATED_LAND

Buffer Distance

- 0
- 50

EA_LANDFILL_SITES

Buffer Distance

- 0
- 250
- HISTORIC_LANDFILL_SITES_10K
- BANK_TOP_WIDTH_PLANNING
- CRT_HOUSEHOLD_AND_MINOR_SCALE_DEVELOPMENTS
- CRT_EIA_AND_MAJOR_SCALE_DEVELOPMENTS
- Flood Zone 3
- Flood Zone 2
- NAT_FSA
- NAT_DEFENCES
- NAT_AREAS_BENEFIT
- NAT_CENTRELINES

HS2 SAFEGUARDING_ZONES

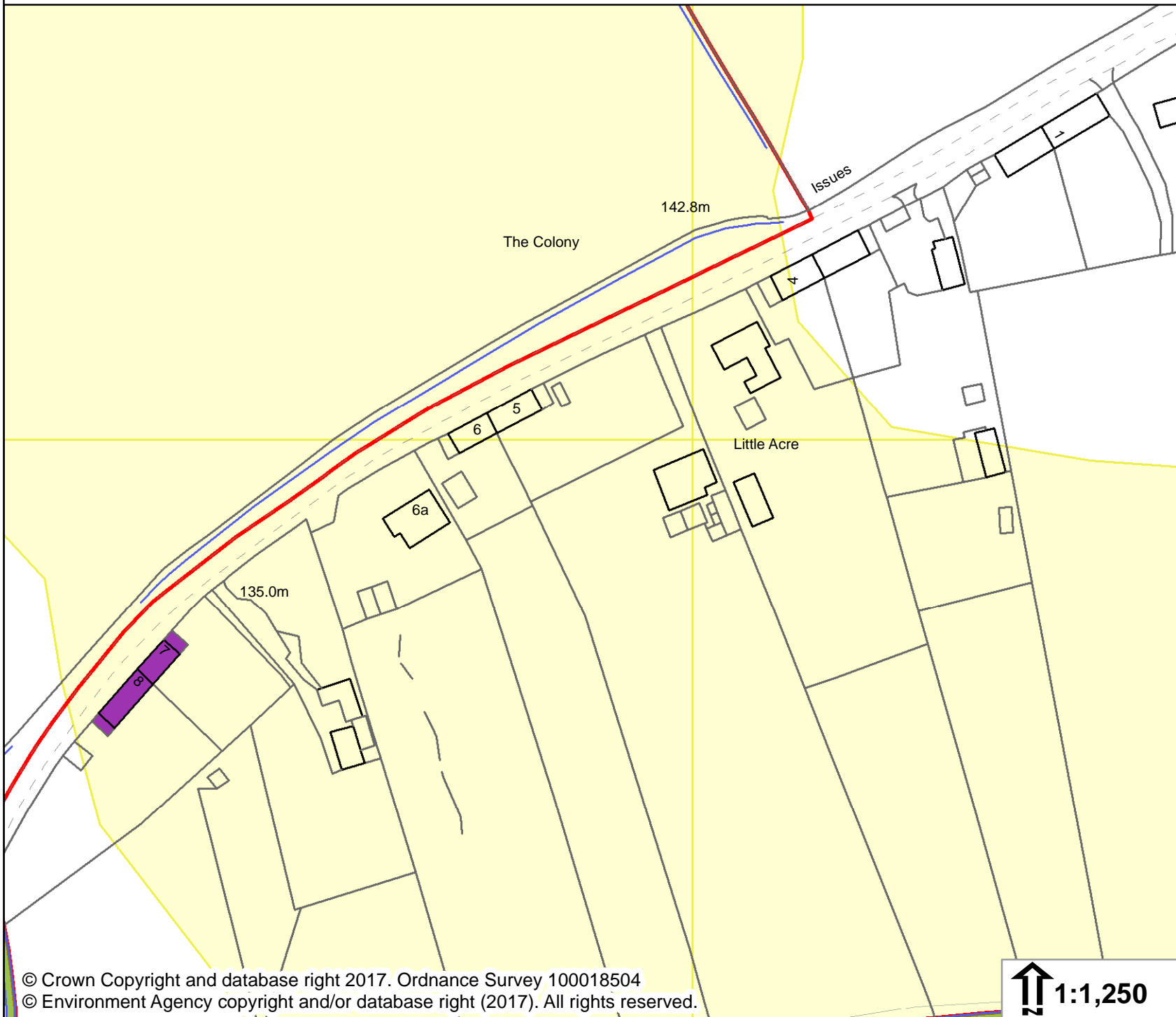
Type

- Safeguarding Limits
- Sub-Surface
- Surface
- NATURALLY_ELEVATED_ARSENIC
- GREEN BELT
- CONSERVATION_TARGET_AREAS
- MINERAL_CONSULTATION_REGION

Neighbourhood Development Plans

Details

- Neighbourhood Plan Area
- Important Amenity Green Spaces
- Local Green Spaces
- NATIONAL_GRID_REFERENCE
- WARDS
- PARISHES



© Crown Copyright and database right 2017. Ordnance Survey 100018504
© Environment Agency copyright and/or database right (2017). All rights reserved.

↑ 1:1,250