

No dimensions are to be scaled from this drawing. All stated measurements are to be verified on site. Any discrepancies to be brought to the attention of Open Spaces.

SCHEDULES OF INDIVIDUAL BEDS PLANTED WITH NATIVE SHRUB MIX AND BULBS (For trees refer to main schedule on drawing No. OS 1346-16.1A)

NATIVE SHRUB MIX BED 1 (989 m2)		
Code	Species	Total No.
NATIVE SHRUB MIX		
CS	Cornus sanguinea	495
EE	Euonymus europaeus	495
PDI	Prunus domestica subsp. italica	12
RC	Rosa canina	396
VO	Viburnum opulus	495

drawing Tree species and Nos. are shown on

NATIVE SHRUB MIX BED 2 (497.5 m2)		
Code	Species	Total No.
NATIVE SHRUB MIX		
CS	Cornus sanguinea	249
EE	Euonymus europaeus	249
PDI	Prunus domestica subsp. italica	6
RC	Rosa canina	199
VO	Viburnum opulus	249

shown on drawing Tree species and Nos. are

NATIVE SHRUB MIX BED 3 (117 m2)		
Code	Species	Total No.
NATIVE SHRUB MIX		
CS	Cornus sanguinea	59
EE	Euonymus europaeus	59
PDI	Prunus domestica subsp. italica	2
RC	Rosa canina	47
VO	Viburnum opulus	59

BULBS (IN THE GREEN) 31 m2		
Code	Species	Total No.
EH	Eranthis hyemalis	225
GN	Galanthus nivalis	225

Tree species and Nos. are shown on drawing

NATIVE SHRUB MIX BED 4 (187 m2)		
Code	Species	Total No.
NATIVE SHRUB MIX		
CS	Cornus sanguinea	94
EE	Euonymus europaeus	94
PDI	Prunus domestica subsp. italica	2
RC	Rosa canina	75
VO	Viburnum opulus	94

BULBS (IN THE GREEN) 31 m2		
Code	Species	Total No.
EH	Eranthis hyemalis	225
GN	Galanthus nivalis	225

Tree species and Nos. are shown on drawing

SCHEDULES OF INDIVIDUAL CENTRAL AVENUE BEDS PLANTED WITH NATIVE SHRUBS AND NATIVE/ORNAMENTAL TREES

NATIVE SHRUB BED A (196 m2)		
Code	Species	Total No.
TREES		
CJ	Cercidiphyllum japonicum	5
LS	Liquidambar styraciflua	5
PAP	Prunus avium 'Plena'	1
NATIVE SHRUBS		
CAS	Cornus alba 'Sibirica'	52
CSW	Calluna vulg. 'Springwood White'	204
LAH	Lavandula ang. 'Hidcote'	154
RC	Rosa canina	17
RO	Rosmarinus officinalis	104

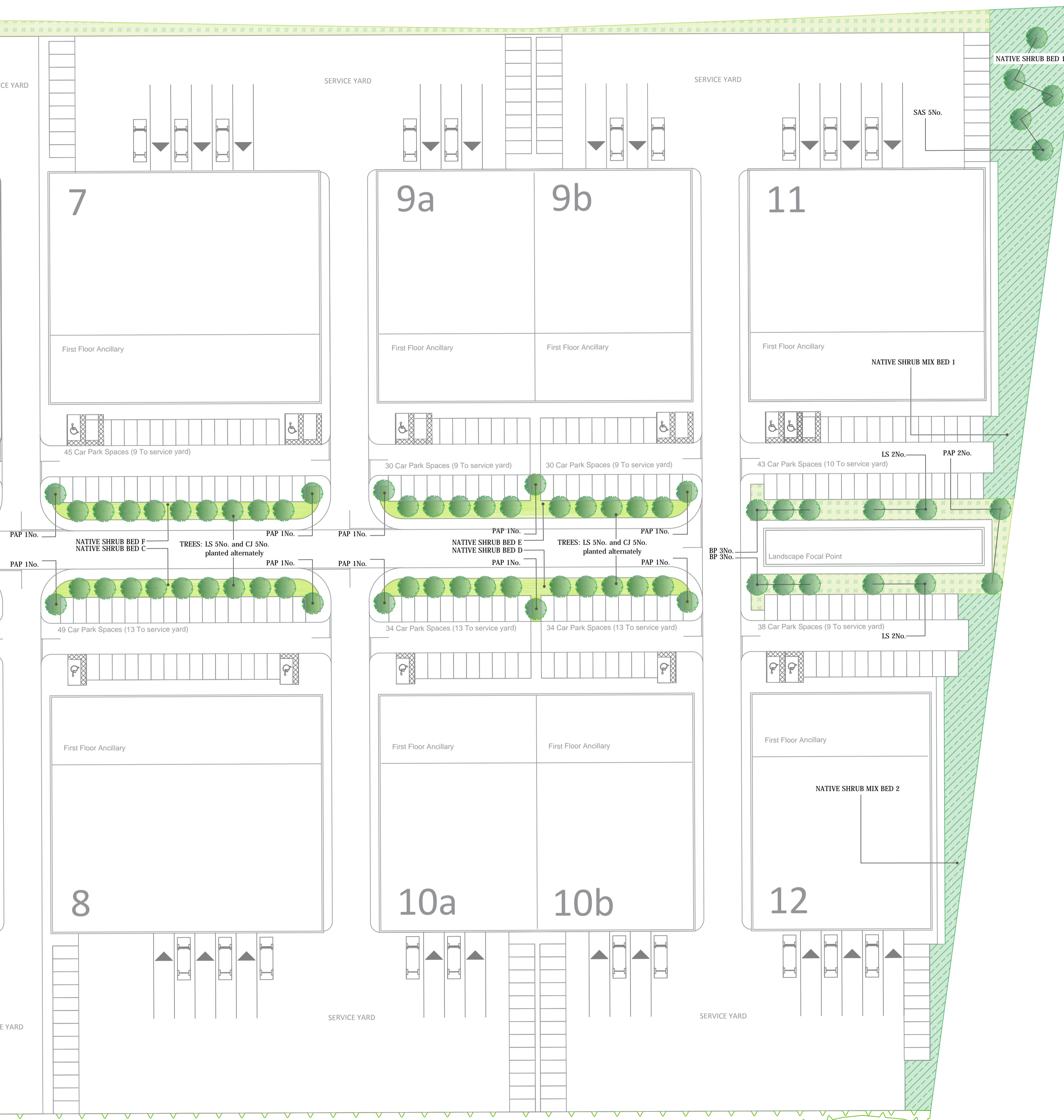
NATIVE SHRUB BED B, D, E, G (217 m2)		
Code	Species	Total No. per Bed
TREES		
CJ	Cercidiphyllum japonicum	5
LS	Liquidambar styraciflua	5
PAP	Prunus avium 'Plena'	3
NATIVE SHRUBS		
CAS	Cornus alba 'Sibirica'	52
CSW	Calluna vulg. 'Springwood White'	231
LAH	Lavandula ang. 'Hidcote'	174
RC	Rosa canina	48
RO	Rosmarinus officinalis	104

NATIVE SHRUB BED C & F (180.6 m2)		
Code	Species	Total No. per Bed
TREES		
CJ	Cercidiphyllum japonicum	5
LS	Liquidambar styraciflua	5
PAP	Prunus avium 'Plena'	2
NATIVE SHRUBS		
CAS	Cornus alba 'Sibirica'	43
CSW	Calluna vulg. 'Springwood White'	199
LAH	Lavandula ang. 'Hidcote'	147
RC	Rosa canina	31
RO	Rosmarinus officinalis	85

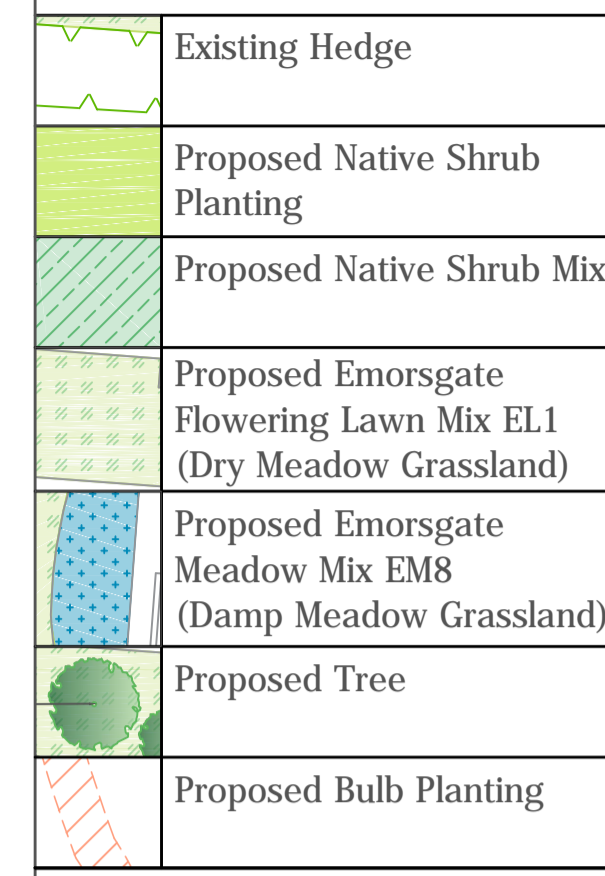
NATIVE SHRUB BED H (173.7 m2)		
Code	Species	Total No.
TREES		
CJ	Cercidiphyllum japonicum	5
LS	Liquidambar styraciflua	5
PAP	Prunus avium 'Plena'	1
NATIVE SHRUBS		
CAS	Cornus alba 'Sibirica'	43
CSW	Calluna vulg. 'Springwood White'	199
LAH	Lavandula ang. 'Hidcote'	150
RC	Rosa canina	17
RO	Rosmarinus officinalis	86

Note: Shrubs to be planted in random single species groups of 3-11 No. at 2 per m2.

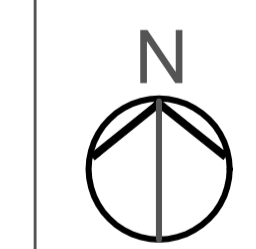
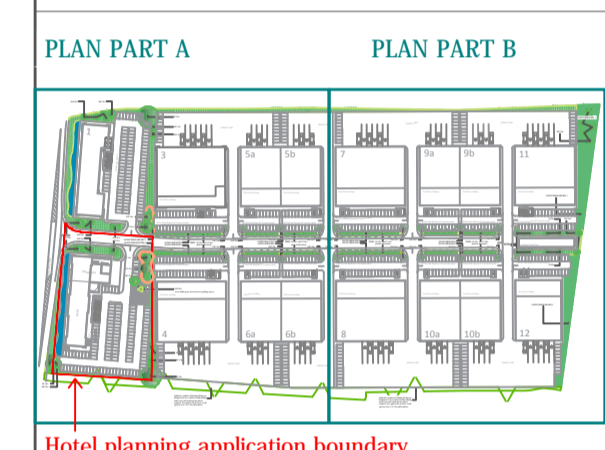
OVERALL PLANTING SCHEDULE: For total plant numbers, plant sizes and planting densities refer to the 1st part of this drawing, No. OS 1346-16.1A.



Indicative position of Existing Hedgerow. Hedgerow to be re-inforced with existing native tree and scrub species where required. Tree girth to be 8-10cm, scrub species to be 1.2-1.5m tall feathery.



Note: This drawing is to be read in conjunction with the Soft Landscape Specification document.



Rev.	Date	Description
A	07.12.17	revised landscape surrounding unit 2-hotel
B	07.12.17	minor revisions to hotel landscape

Client -

Project - Oxford Technology Park Land East of Evenlode Crescent and South of Langford Lane, Kidlington

Drawing Title - Soft Landscape Plan Part B

Date:	02/02/2017	Drawn: CR
Scale:	1:500 on A1	Checked: KM
Dwg No:	OS 1346-16.1B	Rev: B

Open Spaces
The Lodge
Roundbush Farm
Burnham Road
Mundon, Maldon
Essex
CM9 6NP
Tel: 01277 356511
gff@open-spaces.co.uk
www.open-spaces.co.uk
Landscape and Arboricultural Consultants Limited

