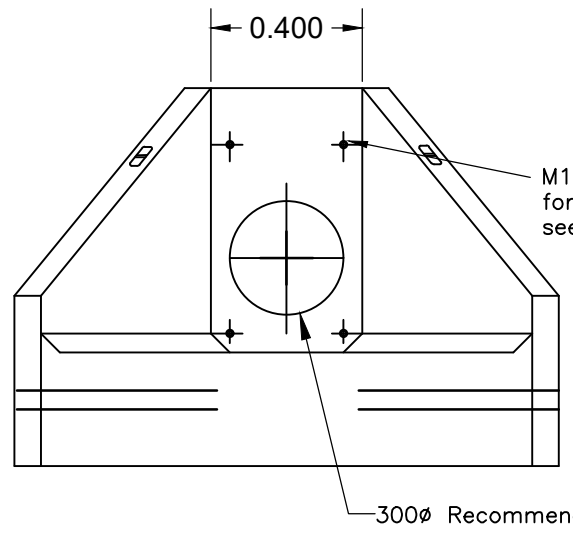


INSTALLATION:
Units should be bedded on minimum 100mm of semi-dry concrete. Sit the headwall level or with a slight fall 1:50 from pipe to spill mouth.

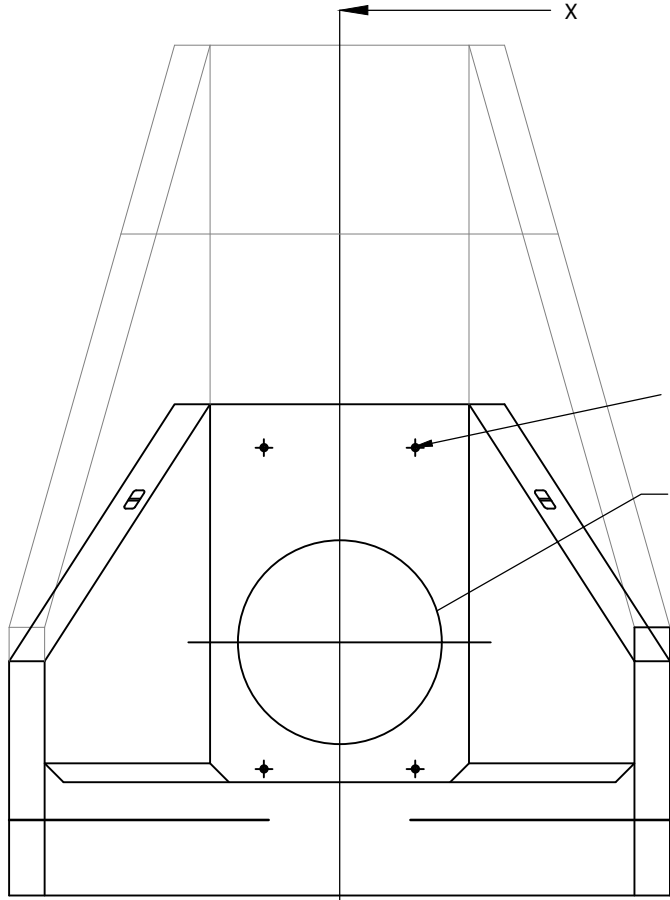
For full detailed installation instructions contact J.K.H. Drainage Units Ltd. on Tel: 01638 713795



Opening in back wall cast to suit the outside diameter pipe at invert height to opening as required.

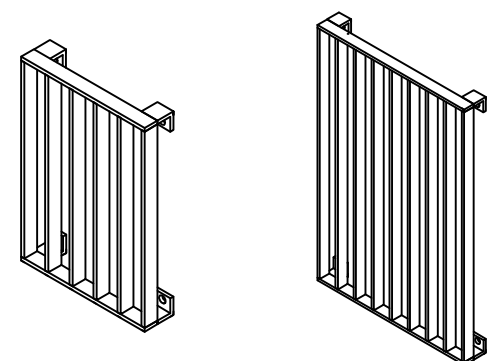
JKH SPILLWAY HEADWALL 600 SERIES DRAINAGE OUTFALL

Scale 1:20

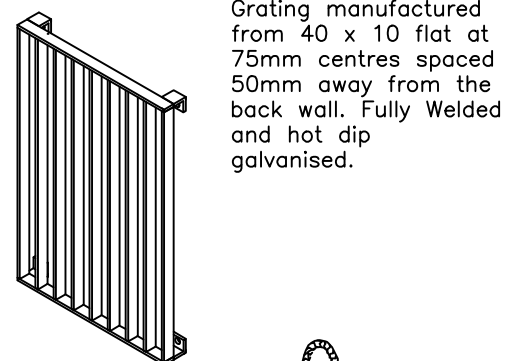


JKH SPILLWAY HEADWALL 300 SERIES DRAINAGE OUTFALL

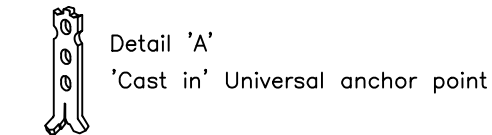
Scale 1:20



Detail 'B'

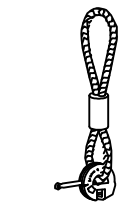


Detail 'C'



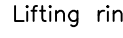
Detail 'A'

Grating manufactured from 40 x 10 flat at 75mm centres spaced 50mm away from the back wall. Fully Welded and hot dip galvanised.



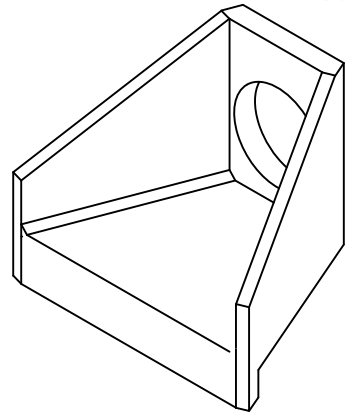
Detail 'A'

'Cast in' Universal anchor point



Detail 'A'

Lifting ring clutch



Detail 'A'

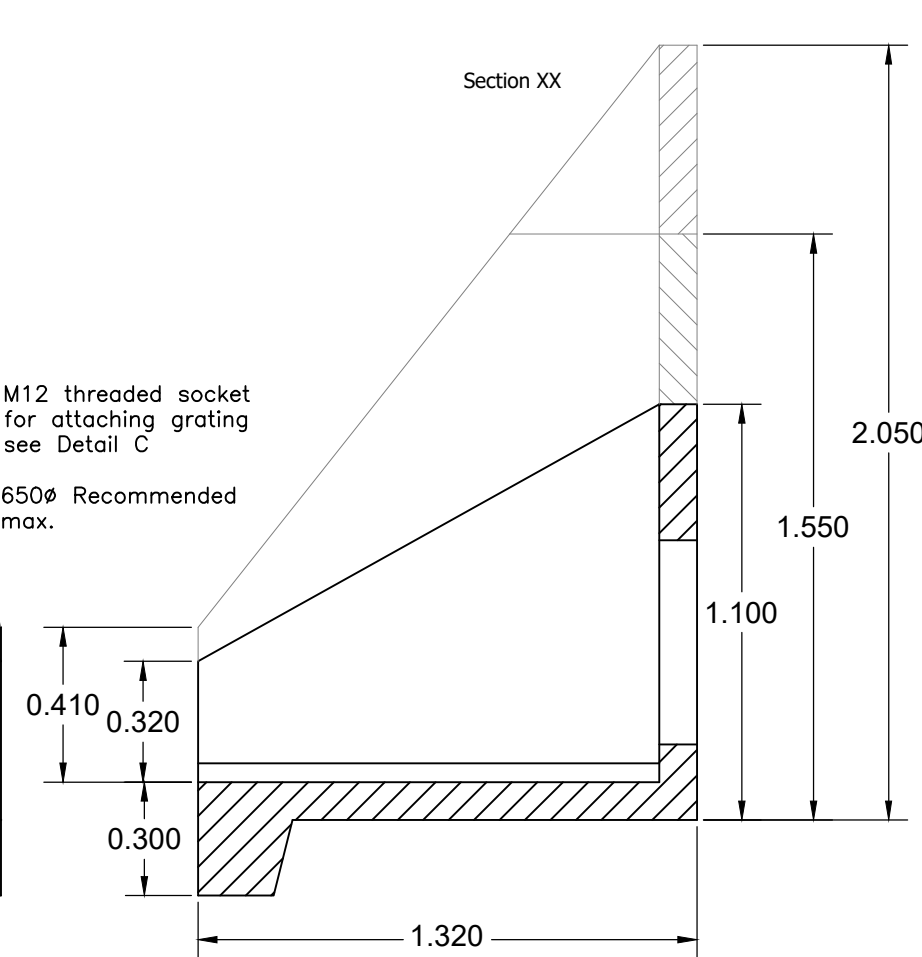
Details based on JKH Drg: No. SWH600

M12 threaded socket for attaching grating see Detail C
650# Recommended max.

M12 threaded socket for attaching grating see Detail C
650# Recommended max.

Details based on JKH Drg: No. SWH600

Section XX



CONSTRUCTION

Please note while these drawings may be used for tender purposes, drawings are subject to Thames Water approval as part of ongoing consultations and design check. Amendments may therefore be requested

B	Additional headwall detail provided for up to 600# SWS.	23.09.16	LJ
A	Drawing status changed to 'For Construction'	20.08.16	CB
-	First Issue	15.07.15	JB

Rev.	Description	Date	By
------	-------------	------	----

Client



Project

Cotefield Farm,
Bodicote

Title

Adoptable Headwall

BANNERS GATE
CIVIL, STRUCTURAL & ARCHITECTURAL DESIGN SERVICES
10-11 Birmingham Street, Halesowen, West Midlands B63 3HN
Tel: 0121 687 1500 Fax: 0121 687 1501
E-mail: mail@bannersgate.com

Scale	NTS	Drawn	MM
Date	July 2015	Checked	JB
File	15031-dwgs/civils	Drawing	15031-316 B