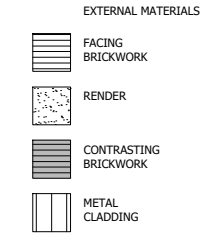


Revision	Date	Description	By
P1	05.12.17	PRELIMINARY ISSUE	JM
P2	23.04.18	House types updated to suit revised SP8 & SP9	MJR
P3	30.04.18	Movement joints incorporated	JM
P4	14.06.18	Gas Meter locations and type updated. Detail references, Valley and lead flashing notes updated.	MJR
P5	31.07.18	GRP canopy updated	MJR
P6	03.09.18	GRP canopy hatch updated	MJR
P7	12.10.18	SP9 balustrade and RWP's updated to suit house type	MJR



FRONT ELEVATION
PLOTS 405-408

RWP AND DRAINAGE
LOCATIONS TBC



GENERAL NOTES


- THIS DRAWING IS TO BE READ IN CONJUNCTION WITH ALL GENERAL ARRANGEMENT AND PROJECT DETAILS DRAWINGS.
- UNLESS NOTED OTHERWISE, ALL VERTICAL DIMENSIONS ARE MEASURED FROM DPC/FFL
2100 INDICATES THE VERTICAL DISTANCE ABOVE DPC/FFL
- EAVES DIMENSION SHOWN MEASURED FROM BRICK/BLOCK FACE TO EXTERNAL FACE OF FASCIA
- WINDOW LEGEND, REFERENCES AND ABBREVIATIONS USED;
 - W WINDOW/EXTERNAL DOOR
 - SG DENOTES SAFETY GLASS
 - # DENOTES EMERGENCY ESCAPE WINDOW TO COMPLY WITH AD PART B1
 - EMJ EXTERNAL MOVEMENT JOINT
 - FFL FINISHED FLOOR LEVEL
 - FCL FINISHED CEILING LEVEL
 - RWP RAIN WATER PIPE
 - (OB) DENOTES OBSCURE GLASS
- MINIMUM DISTANCE BETWEEN EXTRACTS AND OPENINGS TO BE 300MM. SIZES OF EXTRACTS AND FLUES TO BE AS MANUFACTURER'S RECOMMENDATIONS. COLOURS TO MATCH SURROUNDING MATERIAL AS APPROPRIATE.
- FOR WALL, ROOF, WINDOW AND RAINWATER GOODS FINISHES REFER TO MATERIALS SCHEDULE.
- GROUND LEVEL IS SHOWN APPROXIMATE ONLY. FOR PRECISE LEVELS REFER TO THE CIVIL ENGINEER'S DRAWINGS.
- FOR ALL MOVEMENT JOINT LOCATIONS REFER TO STRUCTURAL ENGINEER'S DRAWINGS - COLOUR OF MOVEMENT JOINT SEALANT TO MATCH FACING BRICK.
- ELEVATIONS SHOWN ARE FOR A TYPICAL DETACHED UNIT "AS DRAWN". REFER TO THE RELEVANT BLOCK PLAN DRAWINGS FOR TERRACE GARAGES.




REAR ELEVATION
PLOTS 405-408

RWP AND DRAINAGE
LOCATIONS TBC

Client:



Client:



Site Address:
UPPER HEYFORD, PHASE 8
BICESTER

Drawing Title:
PLOTS 405-408
ELEVATIONS SHEET 1

Scale:
1:50 @ A1

Date drawn:
DEC 2017

Drawn by:
JM

Project Number:
620

Drawing Number:
BLK-08-33

Revision:
P7

Status:
PRELIMINARY ISSUE