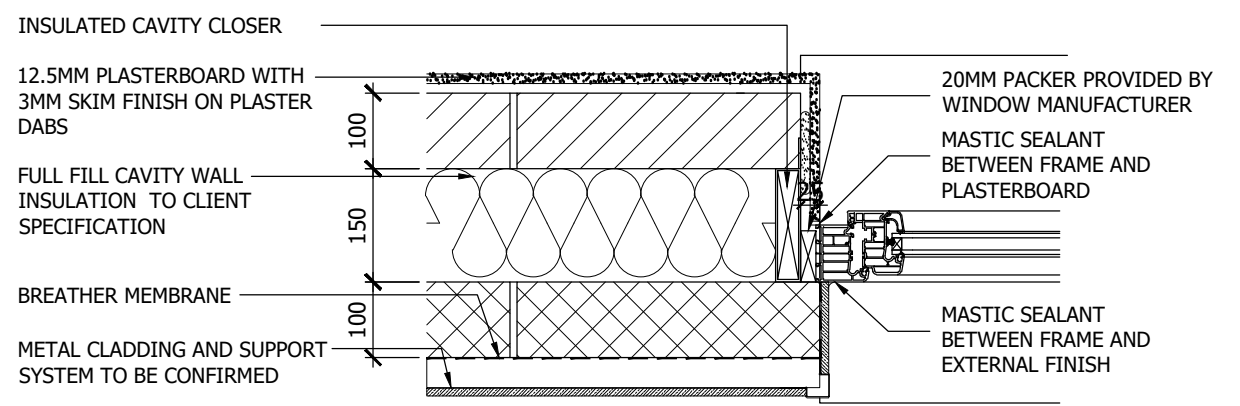


### TYPICAL WINDOW CILL IN METAL CLADDING



### TYPICAL WINDOW JAMB IN METAL CLADDING

T1 Revision: 31.01.18 Date: Tender Issue Description:

Client:



Site Address:  
UPPER HEYFORD

Drawing Title:  
External Wall Details - Typical Window Cill & Jamb Details in Metal Cladding

Project Number: 652  
Drawing Number: 03-03.04  
Revision: T1

Scale: 1:10@A3  
Date drawn: January 2018  
Drawn by: MJR

Status: TENDER