

TECHNICAL NOTE

29th May 2018

Our Ref: **OX5019-1M**

**New Road and Access Junction, Tyne Hill Barn, Sibford Road, Sibford Gower,
Oxfordshire**

Site Access Investigation Note, 1st Revision

Mark Ralph - Matrix

Introduction

Matrix has been instructed to provide a detailed drawing to demonstrate the location of a proposed safe and appropriate new junction on the Sibford Road to access land at Tyne Hill Barn. Due to the de-restricted 60mph speed limit of Sibford Road a key issue in relation to the access is provision of appropriate visibility splays to satisfy local authority under TD42/95 Volume 6 Section 2. The access drawing and associated visibility splays are shown on Drawing OX5019-001/A attached to this technical note.

1. The location for the new road at Tyne Hill Barn site was located for the optimum visibility in terms of safety creating a junction on Sibford Road.
2. The legal speed limit of the road is 60mph.
3. A speed survey was completed on 5th December 2017. This determined the 85th %ile speed for both the northbound and southbound vehicles approaching the proposed access road location. Details of the speed survey are attached to this technical note.
 - The northbound 85th %ile speed was calculated to be 37.5mph.
 - The southbound 85th %ile speed was calculated to be 38.5mph.

The 85th %ile speeds calculated from the speed survey have been adjusted by 2.5mph to reflect wet weather speeds.

4. Based on the above speeds the visibility splays to satisfy TD42/95 Volume 6 section 2 (Chapter 7, clause 7.3) were set at:
 - 90 metres to the south; and
 - 120 metres to the north.

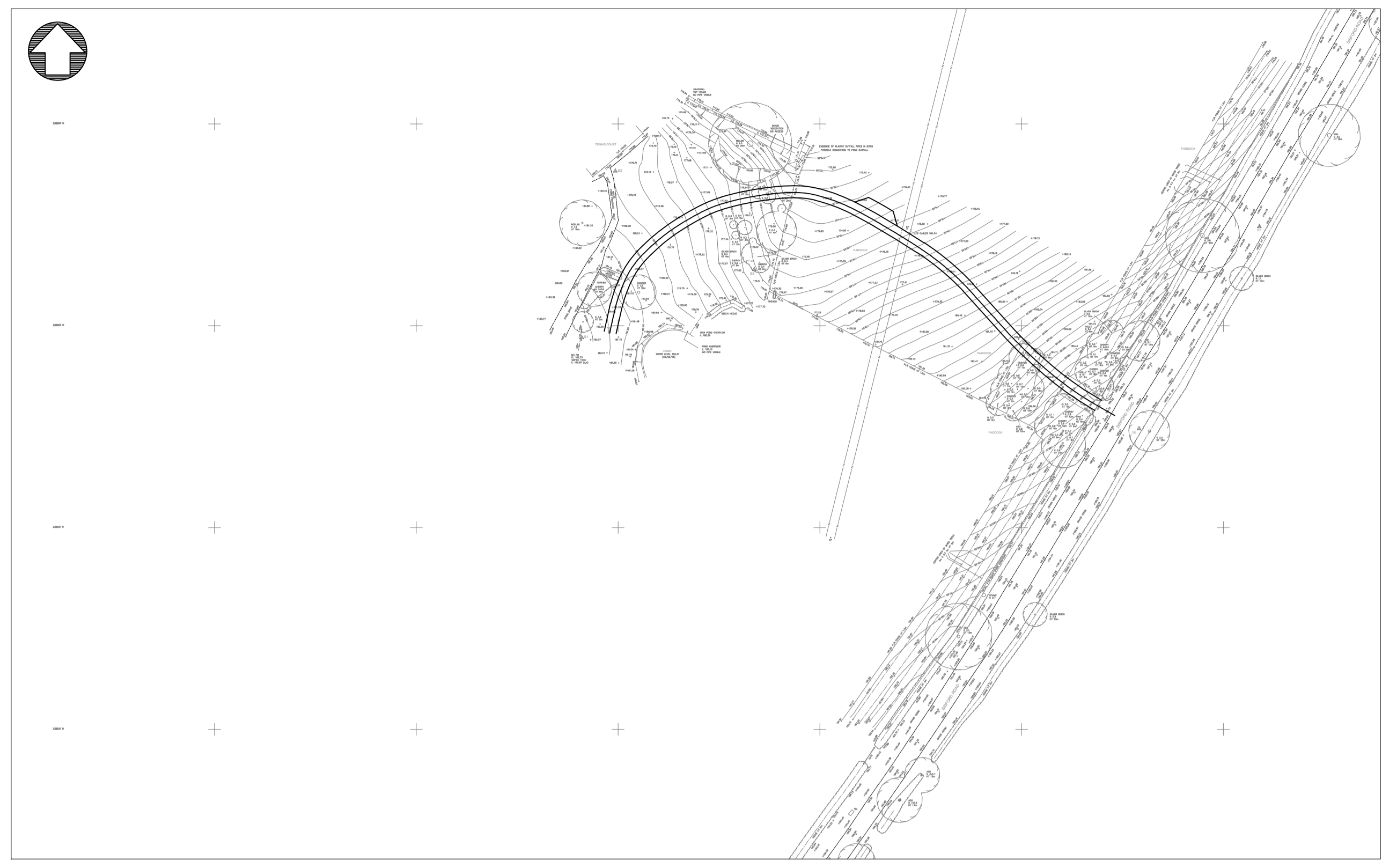
- 5 A standard set-back from edge of carriageway of 2.4 metres was used to simulate driver positioning of vehicle at the give way line which is in accordance with TD42/95.
- 6 A topographical survey drawing was obtained and the access road location and visibility splays were drafted.

Conclusion

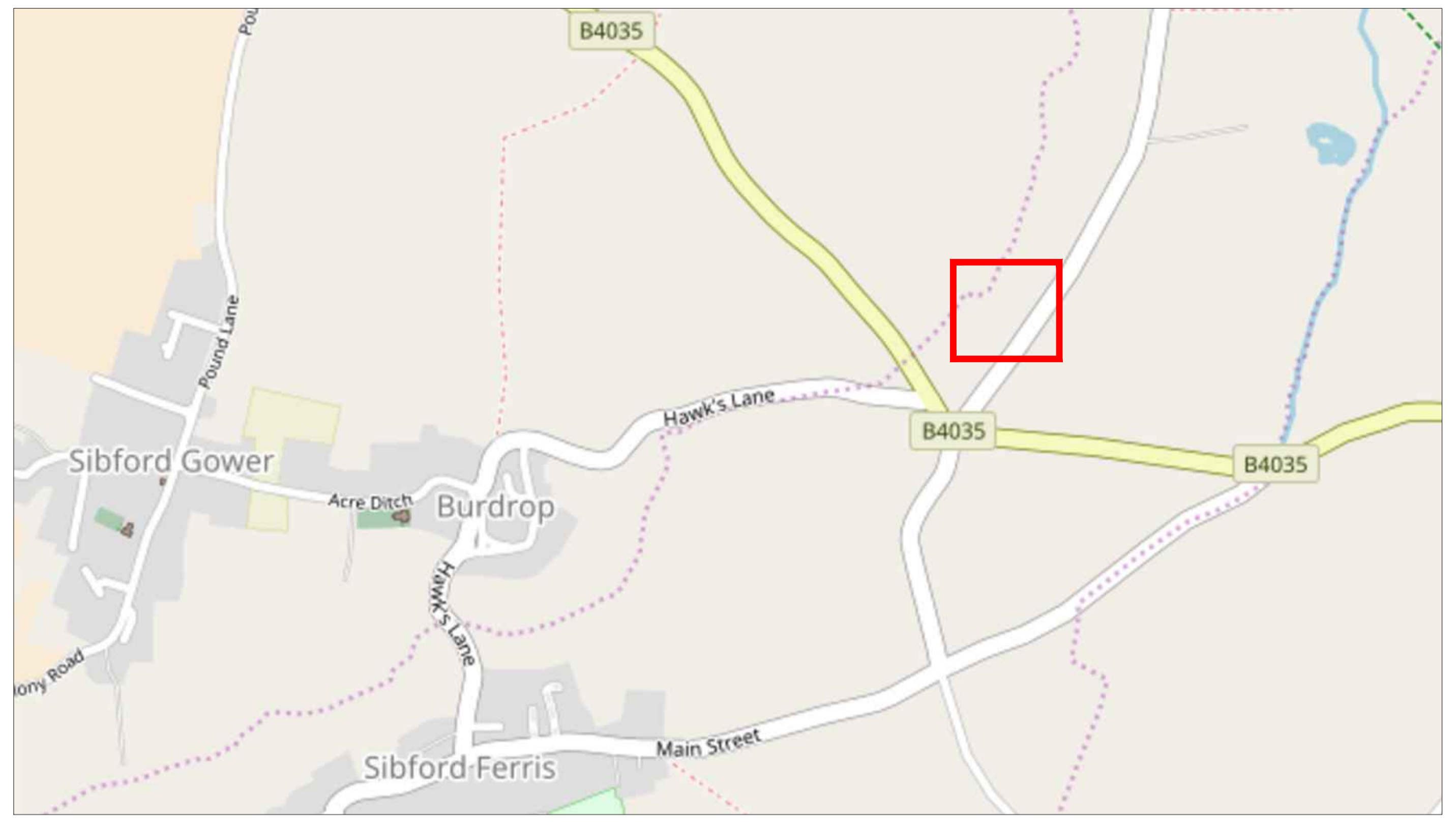
The results show that visibility is acceptable to TD42/95 if the canopies of two large trees (one north, one south of location) are trimmed to allow through visibility.

It is also recommended that the hedgerow and trees adjacent to the proposed new access junction are trimmed to allow clear visibility on approach to Sibford Road.

The location of the new access junction will satisfy the safety requirements under TD42/95 for visibility of oncoming vehicles travelling at speeds up to the observed 85 %ile.

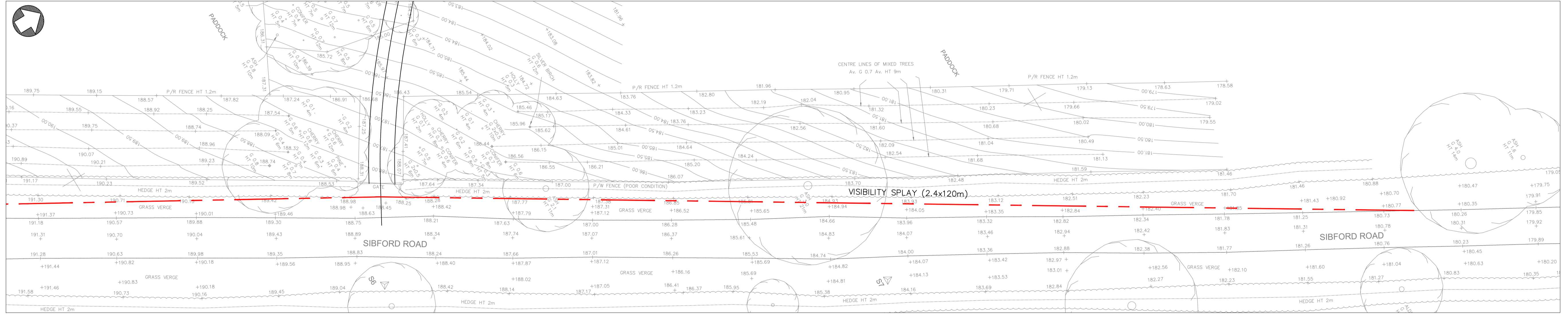


PLAN
1:1000

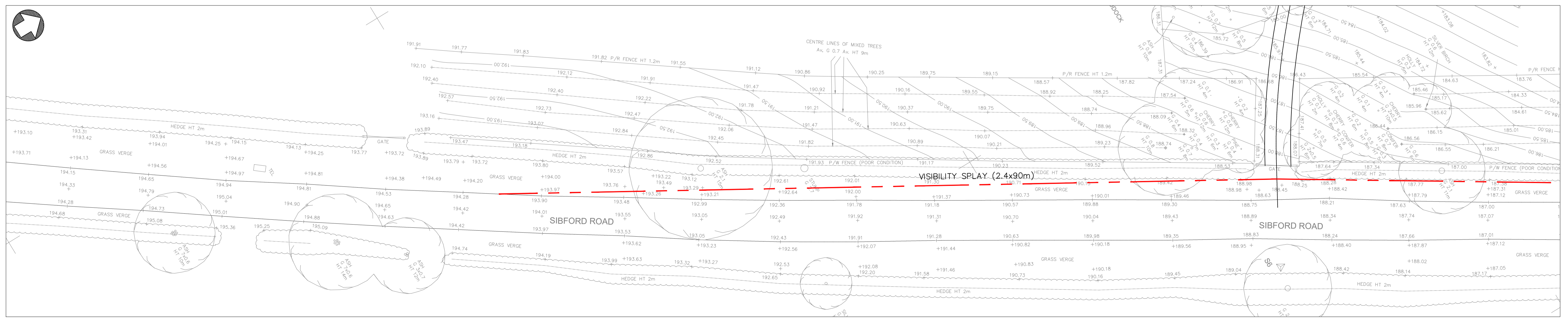


SITE LOCATION

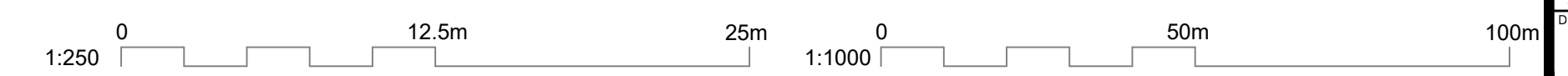
Key
 — Indicative access location
 - - - - Visibility splay



VISIBILITY SPLAY NORTH (2.4x120m)
1:250



VISIBILITY SPLAY SOUTH (2.4x90m)
1:250



REV. C	AMENDED VISIBILITY SPLAYS	AS	MR	MR
REV. B	AMENDED TO ARCHITECTS LAYOUT	BS	MR	MR
REV. A	TOPO SURVEY ADDED	BS	CK	DB
REV.		DR	CH	PA
DRAWN BY	CHECKED BY	PASSED BY	DATE	
AS	MRR	MRR	15/01/17	
SCALES @ AT SIZE		ISSUE STATUS		
AS SHOWN		DRAFT		

NEW ROAD,
TYNE HILL BARN,
SIBFORD ROAD,
SIBFORD GOWER

VISIBILITY SPLAY
ANALYSIS

NEIL & JULIE DANIELLS

Matrix
 DRAWING NUMBER: OX5019-1M-001
 REV. C