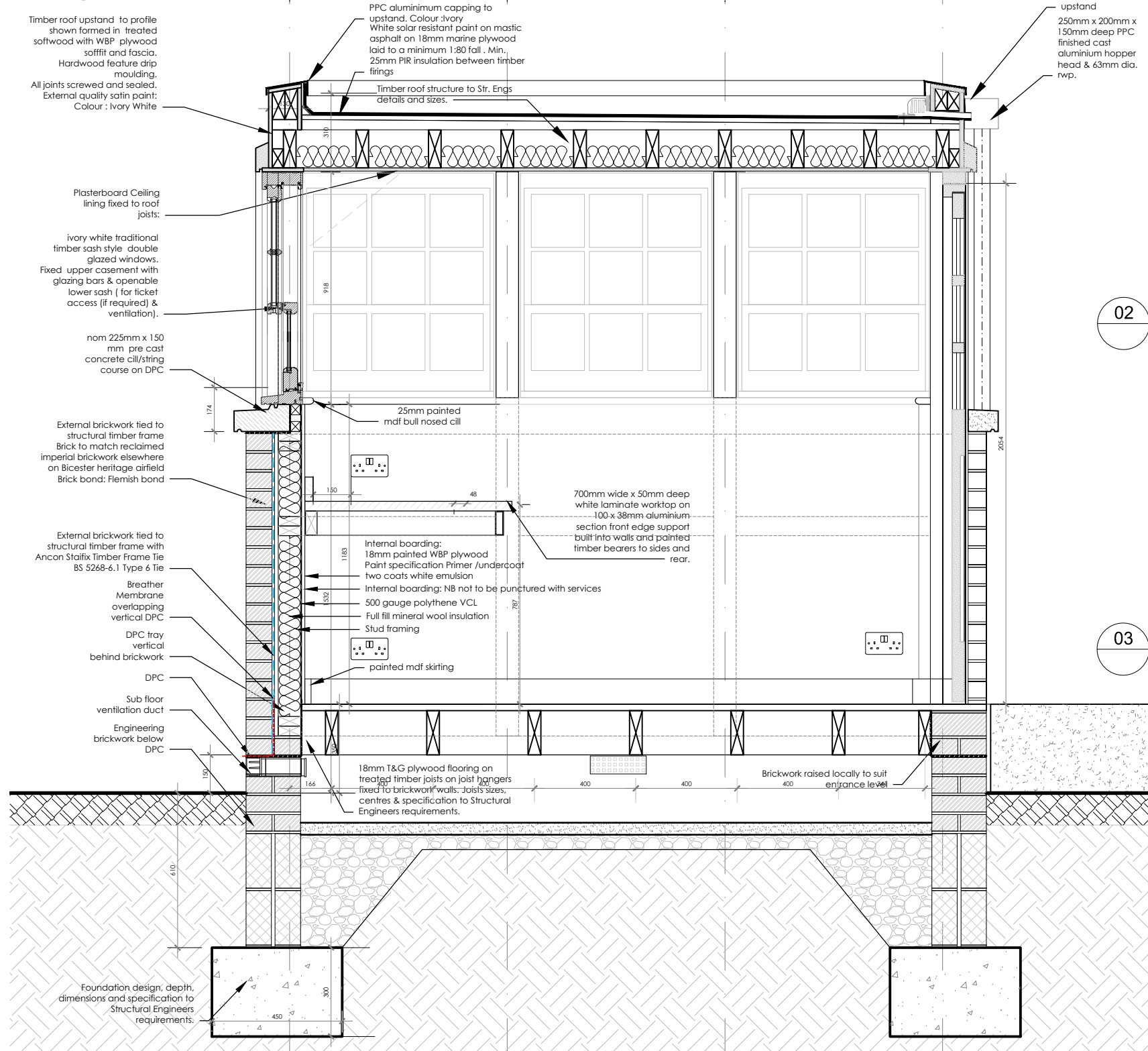
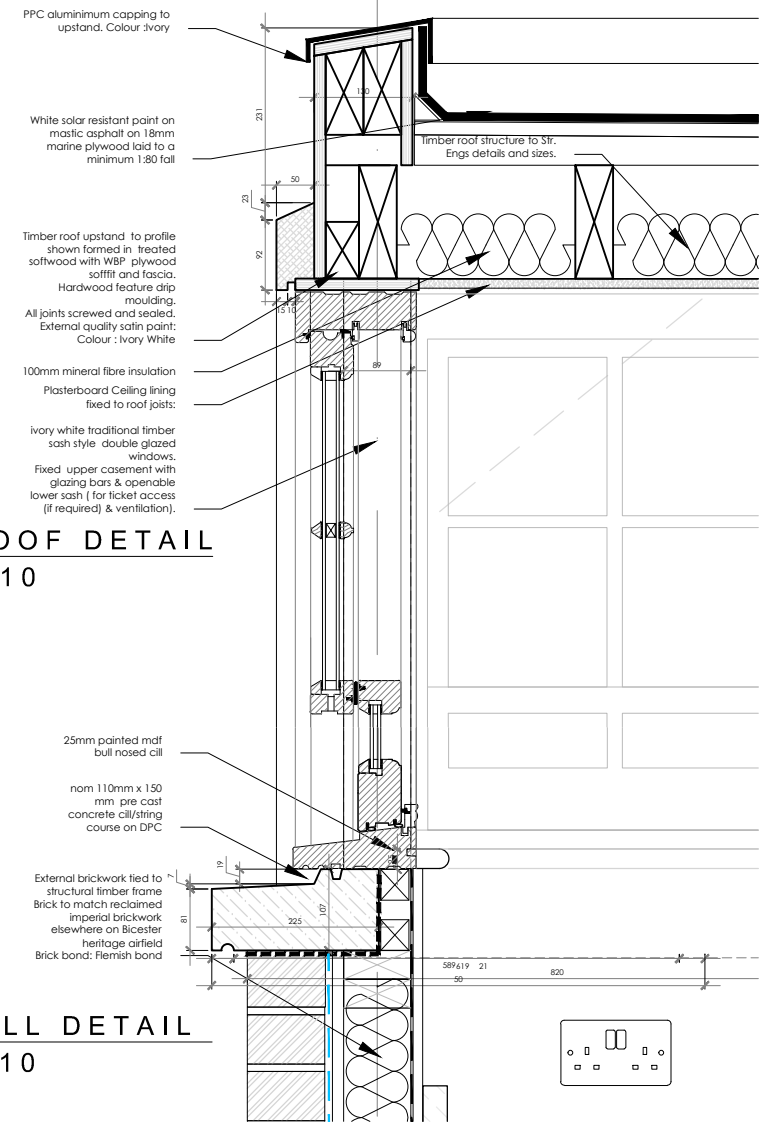


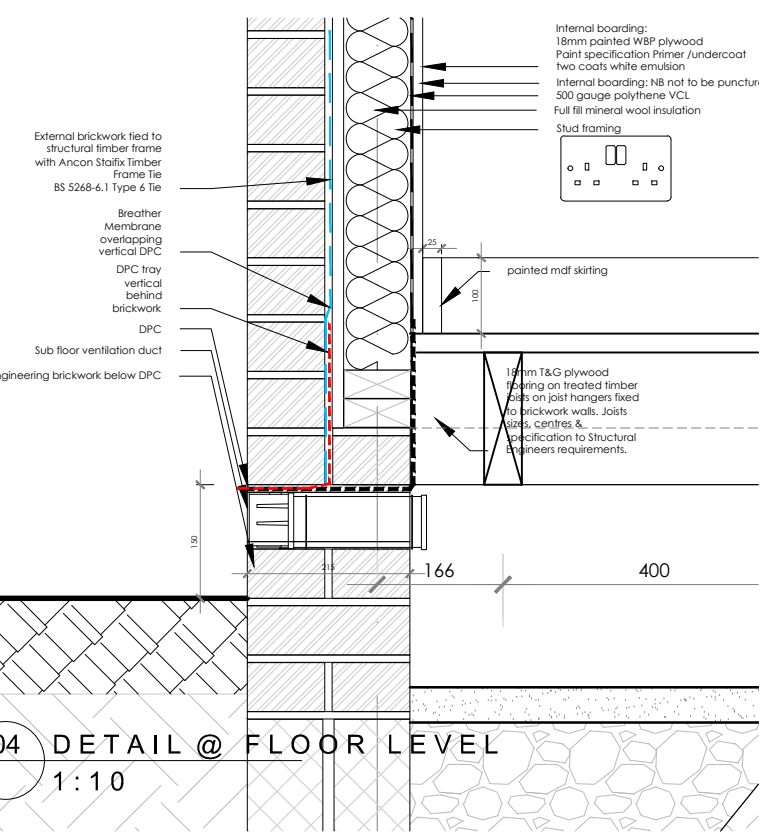
**01 GATE HOUSE KIOSK SECTION**  
1:20



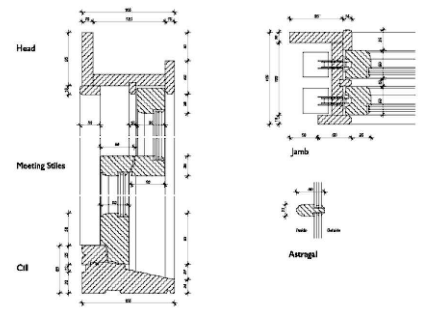
**02 ROOF DETAIL**  
1:10



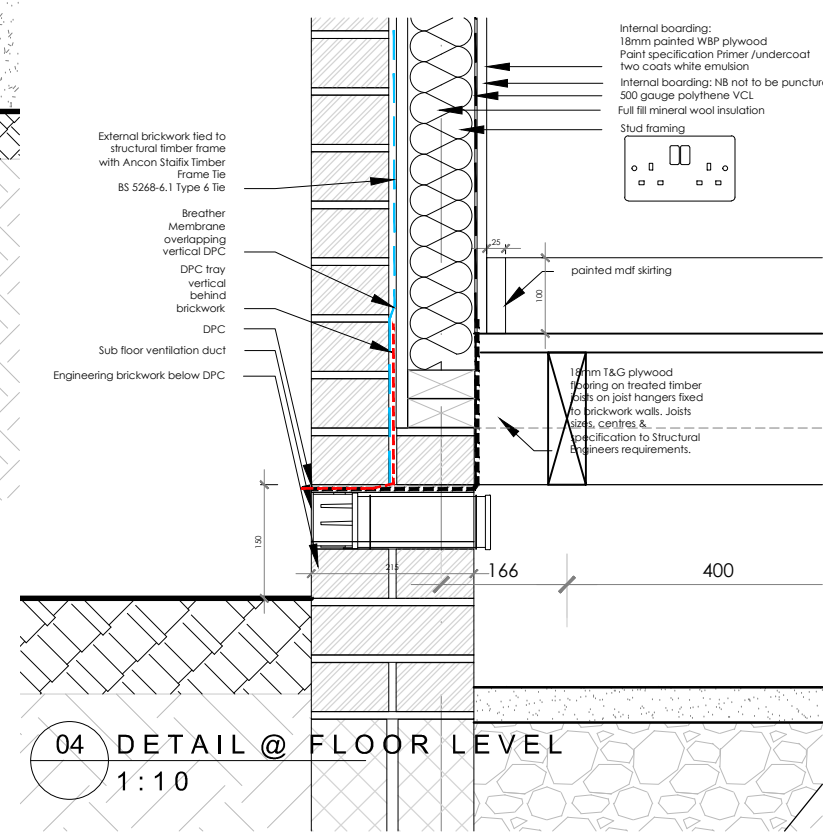
**03 SILL DETAIL**  
1:10



**05 DETAIL of TYPICAL SLIMLITE LTD. SASH CASEMENT WINDOW**  
NTS



**04 DETAIL @ FLOOR LEVEL**  
1:10



rev	date	initials	revision	checked
A	17/07/2017	SC	REVISION	AJ
B	02/10/2017	AJ	PLANNING REVISIONS	AJ
R2	16/05/18	MB	ISSUE FOR REVIEW	
R3	23/05/18	MB	ISSUE FOR REVIEW KIOSK EXT WALL AMENDED TO SINGLE LEAF BRICKWORK CLADDING TO TIMBER FRAME STRUCTURE ROOF CHANGED TO TIMBER STRUCTURE	
C1	06/08/18	MB	CONSTRUCTION ISSUE PLANS UPDATED TO REFLECT STR. ENGS. DETAILS	
C2	29/08/18	MB	CONSTRUCTION ISSUE SECTION UPDATED TO REFLECT PROPOSED CHANGE TO TIMBER WINDOWS DETAILS ADDED	
C3	18/09/18	AJ	ISSUED FOR WINDOW REVISIONS	

CONSTRUCTION ISSUE

**WINDOW DIMENSIONS FOR PRICING ONLY - REFER TO SITE DIMENSIONS FOR MANUFACTURE**

- Gate House Kiosk Proposed Materials:**
- Brick Walls in Flemish Bond
  - Traditional painted timber sash style windows
  - Timber & Asphalt Roof
  - Retro Style external lantern light fittings

Client: Bicester Heritage

Project: Bicester Heritage Bicester

Title: Main Entrance Works Kiosk Sections & Details DRAFT CONSTRUCTION FOR REVIEW

Drawing No	Rev	Drawn	Date	Scale
12068 / 708	C3	MB	09/04/18	1:20/1@A3