



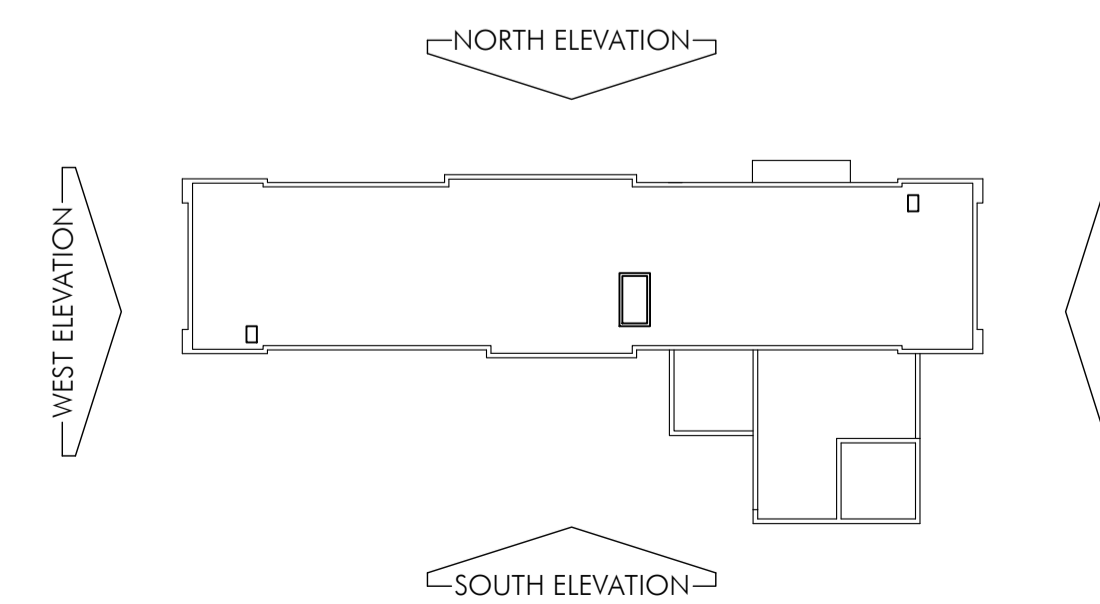
SOUTH ELEVATION SCALE 1:100 @ A1



WEST ELEVATION SCALE 1:100 @ A1

MATERIALS KEY

- A** FIBRE CEMENT RAINSCREEN CLADDING - COLOUR DARK GREY
- B** POWDER COATED INSULATED CLADDING PANELS - VARIED PALETTE OF 3 TONES OF GREY / TBA
- C** POWDER COATED ALUMINIUM TRIPLE GLAZED WINDOW SYSTEM - FRAME COLOUR DARK GREY - WITH OPAQUE GLAZED SPANDREL PANELS AS INDICATED
- D** LOUVRED PANELS WITHIN GLAZING SYSTEM TO ACCOMMODATE AIR INTAKE AND EXTRACT - POWDER COATED TO MATCH FRAME COLOUR
- E** PROJECTING POWDER COATED ALUMINIUM EAVES BEAM - COLOUR GREY / TBA
- F** ALUMINIUM FIXED BLADE BRISE SOLEIL WINDOW SHADING - COLOUR GREY / TBA
- G** SOLID EXTERNAL ALUMINIUM DOORS - COLOUR GREY / TBA
- H** ALUMINIUM DOUBLE GLAZED ENTRANCE DOORS - COLOUR GREY / TBA
- J** SOLID STEEL GATES TO SERVICE YARD - POWDER COATED GREY - COLOUR TBA
- K** POWDER COATED STEEL ESCAPE STAIR WITH OPEN WIRE GUARDING - COLOUR GREY / TBA
- L** ALUMINIUM FIXED LOUVRE PANELS - COLOUR GREY / TBA
- M** LOUVRED ALUMINIUM SCREENING TO CONDENSOR UNITS



KEY PLAN

TH	REV A - SECOND FLOOR PLANT, RESTAURANT GLAZING AND LOUVRES UPDATED, COMPOUND ADDED	18.10.17	VER
TH	DRAWN	JULY 17	DATE
DRAWN	REVISION		



ARCHITECTS & DESIGNERS

7 Buxton Road West, Disley, Stockport, Cheshire, SK12 2AE. Telephone: 01663 763000
 Website: www.allisonpike.com Facsimile: 01663 766772
 Email: studio@allisonpike.com

© Allison Pike Partnership Limited.

PROJECT
 PREMIER INN
 OXFORD TECHNOLOGY PARK

TITLE
 PLANNING DRAWING
 PROPOSED ELEVATIONS 1

SCALE
 1:100 @ A1

JOB No	DRAWING No	REV
PI662	AP18	A

PLANNING ISSUE